

# VISHAY/SPRAGUE Aluminum Electrolytic Capacitors



## SPRAGUE TYPE 39D POWERLYTIC® 85°C, ALUMINUM ELECTROLYTIC CAPACITORS

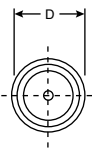
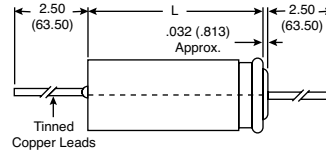
DIMENSIONS: in.

### Performance Characteristics:

- Operating temperature: -20°C to +85°C
- Capacitance tolerance: 10WVDC to 75WVDC, +75%, -10%; 100WVDC to 450WVDC, +50%, -10%
- Dissipation factor: 10WVDC and 15WVDC capacitors, 150%; 25WVDC and 30WVDC capacitors, 60%; 40WVDC and 50WVDC capacitors, 45%; 75WVDC and 100WVDC capacitors, 30%; 150WVDC to 450WVDC capacitors, 18%.

### Features:

- Designed for applications requiring greatest possible capacitance in small physical case sizes
- Supplement original Type 36D can-type capacitors, offering lower capacitance values in smaller sizes with axial leads
- Welds at all critical anode and cathode terminals eliminate riveted or pressure connections to assure freedom from open circuit even when operated in the microvolt or millivolt signal range
- Pressure-sensitive safety vent
- Service life of 10 years or more in normal circuit applications
- Capacitors have an outer plastic-film insulation



Vishay Aluminum Caps, Leaded

For quantities greater than listed, call for quote.

MOUSER STOCK NO.	Vishay Part No.	Value (µF)	Case Size D x L (in.)	Price Each		
				1	25	50
<b>10WVDC @ +85°C, Surge = 12V</b>						
75-39D108G010FJ6	39D108G010FJ6	1000	.635 x 1.641	17.69	14.55	12.30
<b>15WVDC @ +85°C, Surge = 18V</b>						
75-39D808G015JT6	39D808G015JT6	8000	1.01 x 3.641	17.78	16.13	13.94
<b>25WVDC @ +85°C, Surge = 30V</b>						
75-39D478G025JT6	39D478G025JT6	4700	1.01 x 3.641	17.78	16.13	13.94
<b>30WVDC @ +85°C, Surge = 40V</b>						
75-39D507G030FL6	39D507G030FL6	500	.635 x 2.141	16.96	14.62	12.50
75-39D308G030JS6	39D308G030JS6	3000	1.01 x 3.141	21.80	18.81	16.08
<b>40WVDC @ +85°C, Surge = 50V</b>						
75-39D158G040HP6	39D158G040HP6	1500	.885 x 2.641	20.10	16.97	14.67
<b>50WVDC @ +85°C, Surge = 65V</b>						
75-39D257G050HE6	39D257G050HE6	250	.885 x 1.141	20.07	16.18	13.82

For quantities greater than listed, call for quote.

MOUSER STOCK NO.	Vishay Part No.	Value (µF)	Case Size D x L (in.)	Price Each		
				1	25	50
<b>50WVDC @ +85°C, Surge = 65V (Cont.)</b>						
75-39D507G050GL6	39D507G050GL6	500	.760 x 2.141	19.49	15.72	13.42
75-39D118G050HP6	39D118G050HP6	1100	.885 x 2.641	21.41	17.27	14.75
75-39D238G050JT6	39D238G050JT6	2300	1.01 x 3.641	18.00	15.54	13.27
<b>75WVDC @ +85°C, Surge = 95V</b>						
75-39D157G075FJ6	39D157G075FJ6	150	.635 x 1.641	18.85	16.26	13.90
<b>150WVDC @ +85°C, Surge = 175V</b>						
75-39D127F150GL6	39D127F150GL6	120	.760 x 2.141	18.77	15.85	13.70
<b>250WVDC @ +85°C, Surge = 300V</b>						
75-39D506F250JE6	39D506F250JE6	50	1.01 x 1.141	15.87	13.69	12.16
<b>350WVDC @ +85°C, Surge = 400V</b>						
75-39D606F350HL6	39D606F350HL6	60	.885 x 1.641	21.01	17.73	15.32



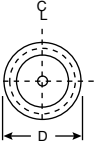
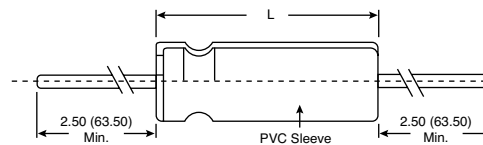
## SPRAGUE TYPE 53D 85°C, TUBULAR GENERAL PURPOSE ALUMINUM CAPACITORS

DIMENSIONS: in.

### Performance Characteristics:

- Operating temperature: -40°C to +85°C
- Capacitance tolerance: -10%, +50%; -10%, +75%

- Life validation test: 1000 hours at +85°C:
- Δ CAP ≤ 15% from initial measurement
- Δ ESR ≤ 1.3 x initial specified limit
- Δ DCL ≤ initial specified limit



For quantities greater than listed, call for quote.

MOUSER STOCK NO.	Vishay Part No.	Value (µF)	Case Size D x L (in.)	Price Each		
				1	25	50
<b>25WVDC @ +85°C, Surge = 35V</b>						
75-53D25V4300	53D432G025HJ6	4300	.885 x 1.641	11.50	11.00	10.37
75-53D25V6200	53D622G025HL6	6200	.885 x 2.141	11.73	11.00	10.60
75-53D25V11000	53D113G025JP6	11000	1.01 x 2.641	13.19	12.76	11.91
<b>35WVDC @ +85°C, Surge = 45V</b>						
75-53D35V1100	53D112G035GE6	1100	.76 x 1.141	9.93	8.94	8.42
75-53D35V2100	53D212G035GJ6	2100	.76 x 1.641	8.53	8.44	8.26
75-53D35V3200	53D322G035HJ6	3200	.885 x 1.641	9.48	8.99	8.82
75-53D35V4700	53D472G035HL6	4700	.885 x 2.141	11.62	11.15	10.50
<b>50WVDC @ +85°C, Surge = 70V</b>						
75-53D50V1300	53D132G050GJ6	1300	.76 x 1.641	8.53	8.44	8.26
75-53D50V1900	53D192G050HJ6	1900	.885 x 1.641	10.91	9.71	9.21
75-53D50V2800	53D282G050HL6	2800	.885 x 2.141	11.50	11.00	10.37

For quantities greater than listed, call for quote.

MOUSER STOCK NO.	Vishay Part No.	Value (µF)	Case Size D x L (in.)	Price Each		
				1	25	50
<b>50WVDC @ +85°C, Surge = 70V (Cont.)</b>						
75-53D50V3800	53D382G050JL6	3800	1.01 x 2.141	12.38	11.90	11.33
75-53D50V5000	53D502G050JP6	5000	1.01 x 2.641	13.09	12.15	11.82
75-53D50V6800	53D682G050JP6	6800	1.01 x 2.641	13.89	13.00	12.55
<b>63WVDC @ +85°C, Surge = 80V</b>						
75-53D63V1000	53D102G063GJ6	1000	.76 x 1.641	10.38	9.23	8.76
75-53D63V1500	53D152G063HJ7	1500	.885 x 1.641	11.34	10.09	9.58
75-53D63V2200	53D222G063HL6	2200	.885 x 2.141	11.73	11.00	10.60
<b>200WVDC @ +85°C, Surge = 250V</b>						
75-53D200V350	53D351F200JL6	350	1.01 x 2.141	12.60	11.80	11.37
<b>250WVDC @ +85°C, Surge = 300V</b>						
75-53D250V56	53D560F250GE6	56	.76 x 1.141	9.93	8.82	8.39
75-53D250V100	53D101F250GJ6	100	.76 x 1.641	10.59	9.42	8.94
75-53D250V130	53D131F250HJ6	130	.885 x 1.641	11.37	10.23	9.09
<b>400WVDC @ +85°C, Surge = 450V</b>						
75-53D400V100	53D101F400JL6	100	1.01 x 2.141	15.98	14.70	14.38
75-53D400V140	53D141F400JS6	140	1.01 x 3.141	15.48	14.90	14.16
75-53D400V150	53D151F400JS6	150	1.01 x 3.141	16.38	15.06	14.79



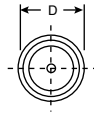
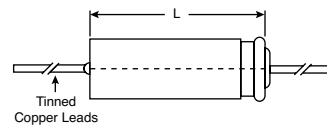
## SPRAGUE TYPE 500D 85°C, MINIATURE GENERAL PURPOSE ALUMINUM CAPACITORS

DIMENSIONS: in.

### Performance Characteristics:

- Operating temperature: -40°C to +85°C (3WVDC to 250WVDC); -20°C to +85°C (251WVDC to 400WVDC)
- Capacitance tolerance: ±20%

- Life validation test: 2000 hours at +85°C:
- Δ CAP ≤ 20% from initial measurement
- Δ ESR ≤ 1.5 x initial specified limit
- Δ DCL ≤ initial specified limit



For quantities greater than listed, call for quote.

MOUSER STOCK NO.	Vishay Part No.	Value (µF)	Case Size D x L (in.)	Price Each		
				1	25	50
<b>16WVDC @ +85°C, Surge = 20V</b>						
75-500D157M016CB2A	500D157M016CB2A	150	.315 x .689	2.99	2.41	1.93
75-500D108M016DH2	500D108M016DH2	1000	.374 x 1.496	3.99	3.22	2.55
75-500D158M016EH2	500D158M016EH2	1500	.433 x 1.496	4.66	3.78	3.03
<b>25WVDC @ +85°C, Surge = 35V</b>						
75-500D107M025CC2A	500D107M025CC2A	100	.315 x .807	3.05	2.45	1.95
75-500D227M025DC2A	500D227M025DC2A	220	.374 x .807	3.26	2.64	2.09
<b>35WVDC @ +85°C, Surge = 40V</b>						
75-500D156M035BA2	500D156M035BA2	15	.248 x .512	2.90	2.33	1.87
75-500D476M035CB2	500D476M035CB2	47	.315 x .689	2.99	2.41	1.93

For quantities greater than listed, call for quote.

MOUSER STOCK NO.	Vishay Part No.	Value (µF)	Case Size D x L (in.)	Price Each		
				1	25	50
<b>50WVDC @ +85°C, Surge = 65V</b>						
75-500D106M050BA2A	500D106M050BA2A	10	.248 x .512	2.90	2.33	1.87
75-500D107M050DC2A	500D107M050DC2A	100	.374 x .807	3.31	2.80	2.29
75-500D157M050DD2A	500D157M050DD2A	150	.374 x .945	3.59	3.04	2.48
75-500D337M050EF2A	500D337M050EF2A	330	.433 x 1.260	4.31	3.50	2.81
75-500D687M050GH2	500D687M050GH2	680	.630 x 1.496	6.44	5.19	4.15
<b>63WVDC @ +85°C, Surge = 75V</b>						
75-500D476M063CC2A	500D476M063CC2A	47	.315 x .807	3.05	2.45	1.95
<b>400WVDC @ +85°C, Surge = 450V</b>						
75-500D106M400FK2	500D106M400FK2	10	.492 x 1.752	6.81	5.48	4.37