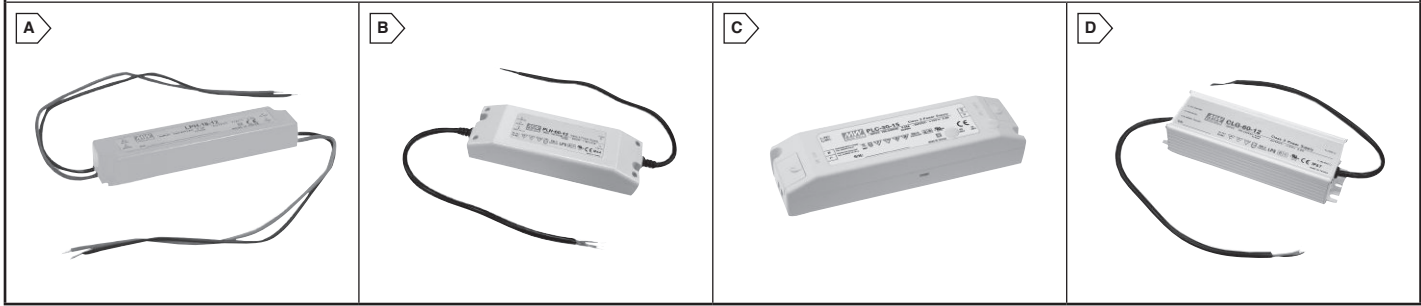


# MEAN WELL Switching Power Supplies

RoHS Compliant This product is RoHS compliant.



DIMENSIONS: mm



## MEAN WELL 15-154W SINGLE OUTPUT LED/ENCAPSULATED POWER SUPPLIES

**Features:**

- Suitable for LED lighting and moving signs
- Short circuit and over voltage protection
- Fully isolated plastic case
- Cooling by free air convection
- 100% full load burn-in test
- EN61347-2-13 approved



For quantities greater than listed, call for quote.

MOUSER STOCK NO.	Mean Well Part No.	Fig.	Output Voltage	Output Current	Power	Dim.: mm			Price Each		
						L	W	H	1	10	20
<b>LPH-18 Series</b> • Input Range: 180-264VAC											
709-LPH18-12	LPH-18-12	A	12V	1.5A	18W	140	30	20	16.23	13.93	13.58
709-LPH18-24	LPH-18-24	A	24V	0.75A	18W	140	30	20	16.23	13.93	13.58
<b>LPC-20 Series</b> • Input Range: 90-264VAC											
709-LPC20-350	LPC-20-350	A	48V	350mA	16.8W	118	35	26	27.65	24.86	22.37
709-LPC20-700	LPC-20-700	A	30V	700mA	21W	118	35	26	27.65	24.86	22.37
<b>LPV-20 Series</b> • Input Range: 90-264VAC											
709-LPV20-5	LPV-20-5	A	5V	3A	15W	118	35	26	27.65	24.86	22.37
709-LPV20-12	LPV-20-12	A	12V	1.67A	20W	118	35	26	27.65	24.86	22.37
709-LPV20-15	LPV-20-15	A	15V	1.33A	20W	118	35	26	27.65	24.86	22.37
709-LPV20-24	LPV-20-24	A	24V	0.84A	20.2W	118	35	26	27.65	24.86	22.37
<b>ELN-30 Series</b> • Input Range: 90-264VAC											
709-ELN30-5	ELN-30-5	B	5V	5A	25W	145	47	30	33.40	32.57	30.56
709-ELN30-9	ELN-30-9	B	9V	3.4A	30.6W	145	47	30	31.23	30.45	28.57
709-ELN30-12	ELN-30-12	B	12V	2.5A	30W	145	47	30	33.40	32.57	30.56
709-ELN30-15	ELN-30-15	B	15V	2A	30W	145	47	30	33.40	32.57	30.56
709-ELN30-24	ELN-30-24	B	24V	1.25A	30W	145	47	30	33.40	32.57	30.56
709-ELN30-27	ELN-30-27	B	27V	1.12A	30.24W	145	47	30	33.40	32.57	30.56
709-ELN30-48	ELN-30-48	B	48V	0.63A	30.24W	145	47	30	33.40	32.57	30.56
<b>PLC-30 Series</b> • Input Range: 90-264VAC											
709-PLC30-9	PLC-30-9	C	9V	3.3A	29.7W	160	46	30	37.10	34.25	31.73
709-PLC30-12	PLC-30-12	C	12V	2.5A	30W	160	46	30	38.88	35.90	33.25
709-PLC30-15	PLC-30-15	C	15V	2A	30W	160	46	30	37.10	34.25	31.73
709-PLC30-20	PLC-30-20	C	20V	1.5A	30W	160	46	30	38.88	35.90	33.25
709-PLC30-24	PLC-30-24	C	24V	1.25A	30W	160	46	30	38.88	35.90	33.25
709-PLC30-27	PLC-30-27	C	27V	1.12A	30.24W	160	46	30	37.10	34.25	31.73
709-PLC30-36	PLC-30-36	C	36V	0.84A	30.24W	160	46	30	37.10	34.25	31.73
709-PLC30-48	PLC-30-48	C	48V	0.63A	30.24W	160	46	30	38.88	35.90	33.25
<b>PLN-30 Series</b> • Input Range: 90-264VAC											
709-PLN30-12	PLN-30-12	B	12V	2.5A	30W	145	47	30	38.87	35.95	33.44
709-PLN30-15	PLN-30-15	B	15V	2A	30W	145	47	30	38.87	35.95	33.44
709-PLN30-24	PLN-30-24	B	24V	1.25A	30W	145	47	30	38.87	35.95	33.44
709-PLN30-27	PLN-30-27	B	27V	1.12A	30.24W	145	47	30	38.87	35.95	33.44
709-PLN30-36	PLN-30-36	B	36V	0.84A	30.21W	145	47	30	38.87	35.95	33.44
709-PLN30-48	PLN-30-48	B	48V	0.63A	30.21W	145	47	30	38.87	35.95	33.44
<b>LPC-35 Series</b> • Input Range: 90-264VAC											
709-LPC35-700	LPC-35-700	A	48V	700mA	33.6W	148	40	30	40.20	37.85	34.95
709-LPC35-1050	LPC-35-1050	A	30V	1050mA	31.5W	148	40	30	40.20	37.85	34.95
<b>LPV-35 Series</b> • Input Range: 90-264VAC											
709-LPV35-12	LPV-35-12	A	12V	3A	36W	148	40	30	30.82	29.02	26.80
709-LPV35-24	LPV-35-24	A	24V	1.5A	36W	148	40	30	30.82	29.02	26.80
709-LPV35-36	LPV-35-36	A	36V	1A	36W	148	40	30	30.82	29.02	26.80
<b>PLN-45 Series</b> • Input Range: 90-264VAC											
709-PLN45-12	PLN-45-12	B	12V	3.8A	45.6W	181	62	35	47.73	43.86	42.57
709-PLN45-15	PLN-45-15	B	15V	3A	45W	181	62	35	47.73	43.86	42.57
709-PLN45-24	PLN-45-24	B	24V	1.9A	45.6W	181	62	35	47.73	43.86	42.57
709-PLN45-36	PLN-45-36	B	36V	1.25A	45W	181	62	35	47.73	43.86	42.57
709-PLN45-48	PLN-45-48	B	48V	.95A	45.6W	181	62	35	47.73	43.86	42.57
<b>CLG-60 Series</b> • Input Range: 90-264VAC											
709-CLG60-12	CLG-60-12	D	12V	5A	60W	172	61.5	39	72.00	70.20	65.88
709-CLG60-15	CLG-60-15	D	15V	4A	60W	173	61.6	40	74.65	72.78	68.30
709-CLG60-20	CLG-60-20	D	20V	3A	60W	174	61.7	41	74.65	72.78	68.30
709-CLG60-27	CLG-60-27	D	27V	2.3A	62.1W	175	61.8	42	74.65	72.78	68.30
709-CLG60-36	CLG-60-36	D	36V	1.7A	61W	176	61.9	43	74.65	72.78	68.30
709-CLG60-48	CLG-60-48	D	48V	1.3A	62.5W	177	61.1	44	74.65	72.78	68.30
<b>ELN-60 Series</b> • Input Range: 90-264VAC											
709-ELN60-9	ELN-60-9	B	9V	5A	45W	181	61.5	35	43.34	37.20	36.27

For quantities greater than listed, call for quote.

MOUSER STOCK NO.	Mean Well Part No.	Fig.	Output Voltage	Output Current	Power	Dim.: mm			Price Each		
						L	W	H	1	10	20
<b>ELN-60 Series (Cont.)</b> • Input Range: 90-264VAC											
709-ELN60-12	ELN-60-12	B	12V	5A	60W	181	61.5	35	43.34	37.20	36.27
709-ELN60-15	ELN-60-15	B	15V	4A	60W	181	61.5	35	43.34	37.20	36.27
709-ELN60-27	ELN-60-27	B	27V	2.3A	62.1W	181	61.5	35	43.34	37.20	36.27
<b>LPC-60 Series</b> • Input Range: 90-264VAC											
709-LPC60-1050	LPC-60-1050	A	48V	1050mA	50.4W	162	42	30	49.54	44.55	40.08
<b>LPV-60 Series</b> • Input Range: 90-264VAC											
709-LPV60-5	LPV-60-5	A	5V	8A	40W	162	42	30	49.54	44.55	40.08
709-LPV60-12	LPV-60-12	A	12V	5A	60W	162	42	30	49.54	44.55	40.08
709-LPV60-24	LPV-60-24	A	24V	2.5A	60W	162	42	30	49.54	44.55	40.08
709-LPV60-48	LPV-60-48	A	48V	1.25A	60W	162	42	30	49.54	44.55	40.08
<b>PLC-60 Series</b> • Input Range: 90-264VAC											
709-PLC60-12	PLC-60-12	C	12V	5A	60W	181.5	62	35	56.53	52.42	51.11
709-PLC60-15	PLC-60-15	C	15V	4A	60W	181.5	62	35	55.00	51.00	49.73
709-PLC60-20	PLC-60-20	C	20V	3A	60W	181.5	62	35	55.00	51.00	49.73
709-PLC60-24	PLC-60-24	C	24V	2.5A	60W	181.5	62	35	56.53	52.42	51.11
709-PLC60-27	PLC-60-27	C	27V	2.3A	62.1W	181.5	62	35	55.00	51.00	49.73
709-PLC60-36	PLC-60-36	C	36V	1.7A	61W	181.5	62	35	56.53	52.42	51.11
709-PLC60-48	PLC-60-48	C	48V	1.3A	62.5W	181.5	62	35	55.00	51.00	49.73
<b>PLN-60 Series</b> • Input Range: 90-264VAC											
709-PLN60-12	PLN-60-12	B	12V	5A	60W	181	61.5	35	51.92	48.08	44.25
709-PLN60-15	PLN-60-15	B	15V	4A	60W	182	61.6	36	51.92	48.08	44.25
709-PLN60-20	PLN-60-20	B	20V	5A	60W	183	61.7	37	51.92	48.08	44.25
709-PLN60-24	PLN-60-24	B	24V	5A	60W	184	61.8	38	51.92	48.08	44.25
709-PLN60-27	PLN-60-27	B	27V	2.3A	62.1W	185	61.9	39	51.92	48.08	44.25
709-PLN60-48	PLN-60-48	B	48V	1.3A	62.5W	187	61.11	41	51.92	48.08	44.25
<b>CLG-100 Series</b> • Input Range: 90-264VAC											
709-CLG100-12	CLG-100-12	D	12V	5A	60W	222	68	39	96.25	93.84	88.07
709-CLG100-15	CLG-100-15	D	15V	5A	75W	222	68	39	100.85	98.32	92.28
709-CLG100-24	CLG-100-24	D	24V	4A	96W	222	68	39	96.25	93.84	88.07
709-CLG100-27	CLG-100-27	D	27V	3.55A	95.85W	222	68	39	100.85	98.32	92.28
709-CLG100-36	CLG-100-36	D	36V	2.65A	95.4W	222	68	39	96.25	93.84	88.07
<b>PLC-100 Series</b> • Input Range: 90-264VAC											
709-PLC100-12	PLC-100-12	C	12V	5A	60W	200.5	70.5	35	70.83	60.80	59.28
709-PLC100-15	PLC-100-15	C	15V	5A	75W	200.5	70.5	35	70.83	60.80	59.28
709-PLC100-20	PLC-100-20	C	20V	4.8A	96W	200.5	70.5	35	72.92	62.60	61.03
709-PLC100-24	PLC-100-24	C	24V	4A	96W	200.5	70.5	35	72.92	62.60	61.03
709-PLC100-27	PLC-100-27	C	27V	3.55A	95.85W	200.5	70.5	35	70.83	60.80	59.28
709-PLC100-36	PLC-100-36	C	36V	2.65A	95.4W	200.5	70.5	35	72.92	62.60	61.03
709-PLC100-48	PLC-100-48	C	48V	2A	96W	200.5	70.5	35	70.83	60.80	59.28
<b>PLN-100 Series</b> • Input Range: 90-264VAC											
709-PLN100-12	PLN-100-12	B	12V	5A	60W	200	70.5	35	77.25		