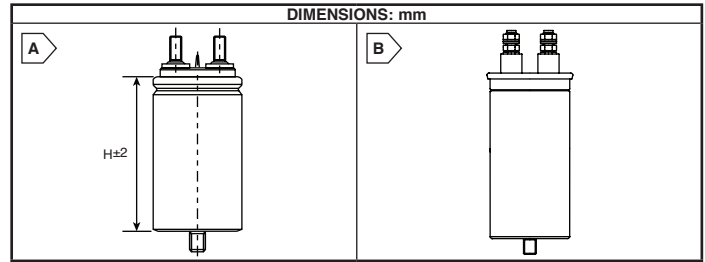


KEMET Electrolytic Capacitors and DC Link

C44A SERIES ALUMINIUM CASE CAPACITORS GENERAL PURPOSE APPLICATION SCREW TERMINALS

Features:

- Operating temperature range: -40°C to +85°C
- Tolerance: 5%



MOUSER STOCK NO.	KEMET Part No.	Fig.	Voltage	Value (µF)	ESR Typ. (mΩ)	K °C/W	IRMS	Dimensions: mm		Price Each			
								B	H	1	5	10	25
80-C44AFGP6200ZE0J	C44AFGP6200ZE0J	A	400	200	4	4.0	32	76	138	59.23	58.11	57.03	56.00
80-C44AFGR6200ZE0J	C44AFGR6200ZE0J	A	400	200	4	7.8	32	76	138	114.96	112.79	110.70	108.69
80-C44AHGP5750ZA0J	C44AHGP5750ZA0J	A	600	75	5	3.2	32	65	138	44.69	43.84	43.03	42.25

For quantities greater than listed, call for quote.

C44P SERIES ALUMINIUM CASE CAPACITORS AC FILTER APPLICATION

Features:

- Operating temperature range: -25°C to +70°C
- Tolerance: 5%



MOUSER STOCK NO.	KEMET Part No.	Fig.	Voltage	Value (µF)	IRMS (A)	Dimensions: mm		Price Each			
						D	H	1	5	10	25
80-C44PKGR6200AASJ	C44PKGR6200AASJ	B	440	200	55	75	247	140.26	137.62	135.07	132.61

For quantities greater than listed, call for quote.

ALS SERIES SCREW TERMINAL CAPACITORS

ALS Series Features:

- Compact size
- High ripple current
- Excellent surge voltage capabilities
- Optimized designs available on request

ALS40/41 Specification:

- Long life, 9000 hours at 105°C (Ur, Ir applied)

ALS Series Applications:

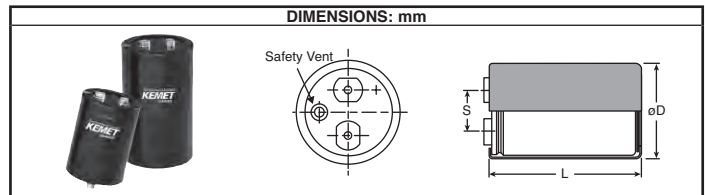
- Smoothing
- Energy storage
- Process control
- AC-motor control
- Traction
- Welding
- Measuring
- Pulse operation in telecommunication
- Demanding power supplies

ALS30/31 Specification:

- Long life, 20000 hours at 85°C (Ur, Ir applied)

For quantities greater than listed, call for quote.

MOUSER STOCK NO.	Volt	Dimensions: mm			ESR at 100Hz mΩ	Price Each		
		D	L	S		1	10	25
ALS30 Series								
80-ALS30A103KE100	100	51	82	22.2	28	25.65	24.30	23.10
80-ALS30A102KE400	400	51	82	22.2	91	23.33	22.10	21.20
80-ALS30A152KF400	400	51	105	22.2	61	37.81	34.53	33.44
80-ALS30A222KF400	400	51	105	22.2	53	37.68	35.69	33.46
80-ALS30A222MF400	400	66	105	28.5	62	38.20	36.07	34.46
80-ALS30A332LF400	400	63.5	105	28.5	54	50.11	47.32	45.80
80-ALS30A472NJ400	400	77	115	31.8	38	60.38	56.61	54.12
80-ALS30A682NP400	400	77	146	31.8	27	80.48	75.45	72.80
80-ALS30A103NT400	400	77	220	31.8	17	181.13	165.47	160.25
80-ALS30A102KE450	450	51	82	22.2	148	32.80	29.96	29.01
80-ALS30A152KF450	450	51	105	22.2	93	42.33	38.66	37.44
80-ALS30A222NF450	450	77	105	31.8	59	44.96	42.46	39.82
80-ALS30A332NF450	450	77	105	31.8	40	80.48	73.52	71.19
80-ALS30A472NJ450	450	77	115	31.8	30	71.81	67.32	65.50
80-ALS30A682NT450	450	77	220	31.8	21	95.15	90.22	87.66



For quantities greater than listed, call for quote.

MOUSER STOCK NO.	Volt	Dimensions: mm			ESR at 100Hz mΩ	Price Each		
		D	L	S		1	10	25
ALS30 Series Cont.								
80-ALS30A102KF500	500	51	105	22.2	165	33.95	32.16	30.80
80-ALS30A222NP500	500	77	146	31.8	62	60.01	56.67	52.17
80-ALS30A332NP500	500	77	146	31.8	54	114.64	104.73	101.42
80-ALS30A472NT500	500	77	220	31.8	37	92.57	87.78	85.70
80-ALS30A682NT500	500	77	220	31.8	34	219.28	200.32	194.00
ALS31 Series								
80-ALS31A332NF400	400	77	105	31.8	49	52.70	49.77	46.98
80-ALS31C682NT450	450	77	220	31.8	21	94.40	89.51	87.33
ALS40 Series								
80-ALS40A104KF025	25	51	105	22.2	9	34.16	29.90	28.50
80-ALS40A472DB063	63	36	62	12.8	27	13.57	11.88	10.23
80-ALS40A333MF063	63	66	105	28.5	8	45.92	40.19	38.58
80-ALS40A103KF100	100	51	105	22.2	21	37.28	32.63	31.32
ALS41 Series								
80-ALS41A102KF400	400	51	105	22.2	124	32.90	28.79	27.45

C44U MKP SERIES ALUMINUM CASE CAPACITORS

Features:

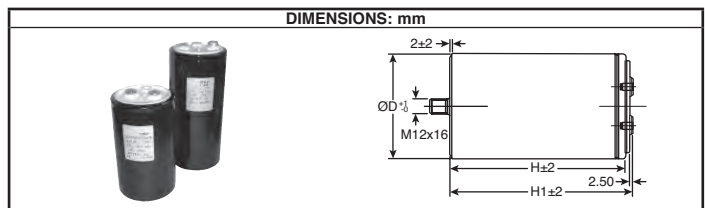
- High ripple current
- High capacitance density

Applications:

- DC links

Specifications:

- Temperature range: -40°C to +85°C
- IEC 1071, EN 61071



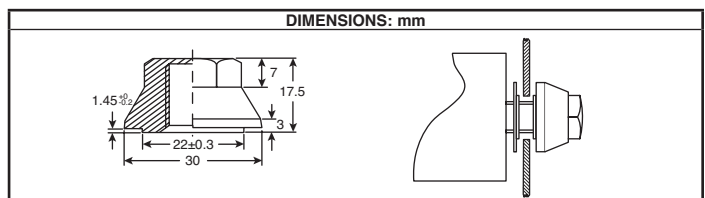
For quantities greater than listed, call for quote.

MOUSER STOCK NO.	Kemet Part No.	Volt	Value (µF)	Dimensions: mm			Thread	ESR at 100Hz mΩ	Price Each				
				D	H	H1			1	5	10	25	50
80-C44UQG6600F8SK	C44UQG6600F8SK	900	600	85	140	146	M12	2.2	161.63	158.75	157.00	155.96	153.27
80-C44UQG6330F8SK	C44UQG6330F8SK	1100	330	85	140	146	M12	3	149.16	146.50	145.00	143.92	141.44
80-C44UQG6500F8SK	C44UQG6500F8SK	1100	500	85	174	180	M12	1.3	182.00	178.75	176.44	175.61	172.58
80-C44UQG6250F8SK	C44UQG6250F8SK	1300	250	85	140	146	M12	3.5	147.12	144.50	142.50	141.96	139.51
80-C44UQG6320F8SK	C44UQG6320F8SK	1300	1300	85	174	180	M12	1.6	170.80	167.75	165.30	164.80	161.96

SCREW TERMINAL INSULATED NYLON MOUNTING NUT

Features and Specifications:

- Standards: CECC 40201, MIL-R26E
- Resistance range: 10kΩ-47kΩ
- Resistance tolerance: ±5%
- Rated voltage: 700VDC acc. to CECC 40201-003
- Temperature range: -55°C to +105°C



For quantities greater than listed, call for quote.

MOUSER STOCK NO.	Kemet Part No.	Dimensions: mm		Test Volt 50-60Hz 1 min (KVAC)	Price Each				
		Mounting Hole (min)	Max Chassis Thickness		1	10	50	100	500
80-PYB7041	PYB7041	ø20.5	5	2.5	1.20	1.01	.95	.92	.89