

# VISHAY/SFERNICE Precision Potentiometers

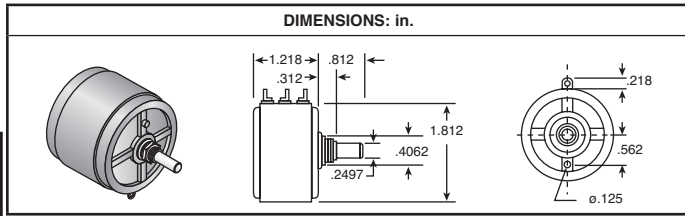
## MODEL 830 THREE TURN WIREWOUND

### Electrical Specifications:

- Tolerance:  $\pm 3\%$ ,  $200\Omega \leq R_t \leq 150K\Omega$
- Power rating: 3W @ 40°C derating to 0W @ 125°C
- Electrical travel:  $1,080^\circ \pm 4^\circ - 0^\circ$

### Physical Specifications:

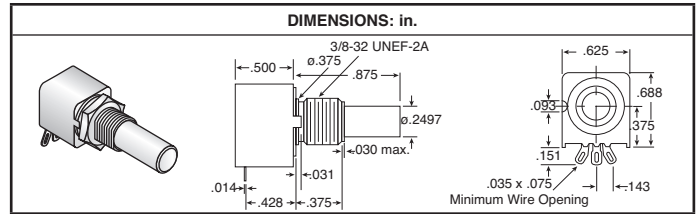
- Temperature:  $-55^\circ\text{C}$  to  $+125^\circ\text{C}$
- Rotational Life: 500,000 shaft revolutions
- Ganging: 2 sections max.
- 3 turn 3 watts



For quantities greater than listed, call for quote.

MOUSER STOCK NO.	Value Range ( $\Omega$ )	Resistance %	Temp. Coeff. PPM/ $^\circ\text{C}$	Price Each		
				1	5	10
594-830-1102	1K	0.050	110	101.80	95.02	85.50
594-830-1202	2K	0.047	20	101.80	95.02	85.50
594-830-1502	5K	0.035	20	101.80	95.02	85.50
594-830-1103	10K	0.029	20	101.80	95.02	85.50
594-830-1203	20K	0.024	20	124.31	118.92	108.42
594-830-1503	50K	0.017	20	124.31	118.92	108.42

## MODEL 657 5/8" SEALED SINGLE-TURN PRECISION CONDUCTIVE PLASTIC ON ALUMINA SUBSTRATE



### Mechanical Specifications:

- Rotation:  $250^\circ \pm 2^\circ$
- Stop strength: 10 in.-lb. max.

### Features:

- Conductive plastic on alumina substrate
- Sealed

### Electrical Specifications:

- Tolerance: standard  $\pm 20\%$
- Linearity:  $\pm 5\%$
- Rotation:  $240^\circ \pm 4^\circ$
- Power rating: 1.0W @  $85^\circ\text{C}$

Price Each			
1	5	10	20
16.28	14.90	13.45	12.25

### Environmental:

- Rotational life: 1 million cycles
- Operating temperature:  $-40^\circ\text{C}$  to  $+125^\circ\text{C}$

Value ( $\Omega$ )	MOUSER STOCK NO.
1K	594-657-0-0-102
2K	594-657-0-0-202
5K	594-657-0-0-502
10K	594-657-0-0-103
20K	594-657-0-0-203
50K	594-657-0-0-503
100K	594-657-0-0-104

## MODEL 860 TEN TURN WIREWOUND

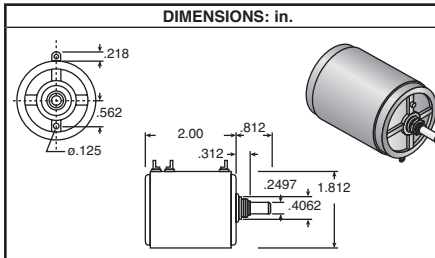
### Physical Specifications:

- Temperature:  $-55^\circ\text{C}$  to  $+125^\circ\text{C}$
- Rotational Life: 500,000 shaft revolutions
- Ganging: 2 sections max.

### Electrical Specifications:

- Tolerance:  $\pm 3\%$ ,  $200\Omega \leq R_t \leq 500K\Omega$
- Power rating: 8W @  $40^\circ\text{C}$  derating to 0W @  $125^\circ\text{C}$
- Electrical travel:  $3,600^\circ \pm 4^\circ - 0^\circ$

Price Each			
1	5	10	20
133.02	119.43	109.35	99.75



Value ( $\Omega$ )	MOUSER STOCK NO.
500	594-860-1501
1K	594-860-1102
5K	594-860-1502
10K	594-860-1103

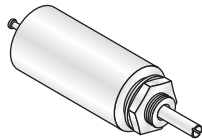
## MODEL 162 1/2" TEN TURN PRECISION WIREWOUND

### Specifications:

- Body (LxD):  $1.00" \times 0.50"$
- Shaft (LxD):  $.687" \times .0935"$
- Power rating: 2.0W @  $40^\circ\text{C}$  derating to 0W @  $125^\circ\text{C}$
- Linearity:  $\pm 0.3\%$
- Resistance tolerance:  $\pm 5\%$
- Temperature coefficient:  $\pm 20\text{ppm}/^\circ\text{C}$
- Temperature range:  $-55^\circ\text{C}$  to  $+125^\circ\text{C}$
- Electrical rotation:  $3600^\circ \pm 15^\circ - 0^\circ$

For quantities greater than listed, call for quote.

MOUSER STOCK NO.	Value Range ( $\Omega$ )	Price Each		
		1	5	10
594-16211102	1K	241.00	221.99	203.30
594-16211103	10K	241.00	221.99	203.30
594-16211104	100K	241.00	221.99	203.30



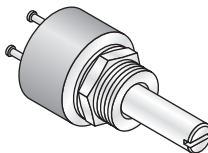
## MODEL 140 1/2" SINGLE-TURN PRECISION WIREWOUND

### Specifications:

- Body (LxD):  $.305" \times .500"$
- Shaft (LxD):  $.70" \times 0.1248"$
- Power rating: 2.0W @  $40^\circ\text{C}$  derating to 0W @  $125^\circ\text{C}$
- Linearity:  $\pm 1.0\%$
- Resistance tolerance:  $\pm 5\%$
- Temperature coefficient:  $\pm 20\text{ppm}/^\circ\text{C}$
- Temperature range:  $-55^\circ\text{C}$  to  $+125^\circ\text{C}$
- Electrical rotation:  $320^\circ \pm 5^\circ$

For quantities greater than listed, call for quote.

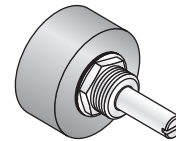
MOUSER STOCK NO.	Value Range ( $\Omega$ )	Price Each			
		1	5	10	20
594-14000102	1K	60.84	55.29	50.89	46.27
594-14000502	5K	60.84	55.29	50.89	46.27
594-14000103	10K	60.84	55.29	50.89	46.27
594-14000203	20K	70.80	64.88	58.96	53.57



## MODEL 357 7/8" SINGLE TURN CONDUCTIVE PLASTIC

### Specifications:

- Plain and slotted shaft available
- Power rating: 1.0 W @  $70^\circ\text{C}$  derated to 0 W @  $125^\circ\text{C}$
- Linearity:  $\pm 2\%$
- Tolerance:  $\pm 20^\circ$
- Rotation:  $360^\circ$  continuous
- Nut and washer included



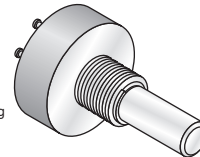
Price Each			
1	5	10	20
16.73	15.40	15.06	13.37

Value ( $\Omega$ )	MOUSER STOCK NO.
1K	594-357-00-102
2K	594-357-00-202
5K	594-357-00-502
10K	594-357-00-103

## MODEL 157 PRECISION - SINGLE TURN INDUSTRIAL POTENTIOMETER

### Specifications:

- Power rating: 1.0 W @  $40^\circ\text{C}$  derated to 0 W @  $125^\circ\text{C}$
- Resistance tolerance:  $\pm 20^\circ$
- Temperature coefficient:  $\pm 60\text{ppm}/^\circ\text{C}$
- Electrical rotation:  $340^\circ \pm 4^\circ$
- Rugged one piece metal housing
- No mechanical stops
- Nut and washer included on bushing mount



Price Each			
1	5	10	20
22.11	20.68	19.32	17.41

Value ( $\Omega$ )	MOUSER STOCK NO.
1K	594-15711102
2K	594-15711202
5K	594-15711502
10K	594-15711103
20K	594-15711203
50K	594-15711503

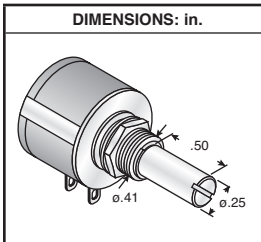
## MODEL 534/536 7/8" TEN TURN PRECISION WIREWOUND

### Specifications:

- Power rating at  $70^\circ\text{C}$  2.0W linearity to 0W @  $125^\circ\text{C}$
- Tolerance:  $\pm 5\%$
- Temperature coefficient:  $\pm 20\text{ppm}/^\circ\text{C}$
- Temperature range:  $-55^\circ\text{C}$  to  $+125^\circ\text{C}$
- Linearity: 534 Series  $\pm 25\%$   
536 Series  $\pm 20\%$

### Features:

- High power rating
- Rugged integrated construction
- Superior stop strength



### Metal Shaft

For quantities greater than listed, call for quote.

MOUSER STOCK NO.	Value Range ( $\Omega$ )	Price Each		
		1	5	10
594-53411101	100	14.80	13.91	12.43
594-5341201	200	14.78	13.89	12.41
594-53411501	500	14.80	13.91	12.43
594-53411102	1K	14.80	13.91	12.43
594-5341202	2K	14.80	13.91	12.43
594-53411502	5K	14.80	13.91	12.43
594-53411103	10K	14.80	13.91	12.43
594-5341203	20K	14.80	13.91	12.43
594-53411-503	50K	20.01	18.80	16.80
594-53411104	100K	23.03	21.16	19.34

### Plastic Shaft

594-53611101	100	11.68	11.39	11.09
594-5361201	200	11.68	11.39	11.09
594-53611501	500	11.68	11.39	11.09
594-53611102	1K	11.68	11.39	11.09
594-5361202	2K	11.68	11.39	11.09
594-53611502	5K	11.68	11.39	11.09
594-53611103	10K	11.68	11.39	11.09
594-5361203	20K	11.68	11.39	11.09
594-53611503	50K	21.65	19.87	18.02
594-53611104	100K	24.10	22.15	20.05

## PRECISION DIALS METAL SHAFT

### Features:

- Satin chrome finish
- Large, easy to read numbers
- Positive brake action
- Shaft bore is .250"

For quantities greater than listed, call for quote.

MOUSER STOCK NO.	Vishay Part No.	Fig.	No. of Turns	Minor Scale	Size (in.)		Price Each			
					W	H	1	5	10	20
594-11111	011-1-11	A	10	1/50	1.0	.826	19.40	18.79	18.18	16.97
594-18111	018-1-11	A	15	1/50	.875	.875	10.64	10.30	9.97	9.31
594-21111	021-1-11	A	15	1/100	1.81	1.0	20.26	19.62	18.99	17.72
594-15111	015-1-11	B	10	1/100	1.0	1.75	22.60	21.89	21.19	19.77

