

OHMITE FIXED VITREOUS ENAMEL POWER RESISTORS - 8 WATT TO 225 WATT

Cross Reference Chart

Ohmite	Clarostat	Huntington
B8J	VPR5F	FVTS-5
B12J	VPR10F	FVTS-10
L25J	VP25K	FVT-25
L50J	VP50K	FVT-50
L100J	VK100N	FVT-100
L225J	VK200W	FVT-200

Conversion Table							
Value	Value Code	Value	Value Code	Value	Value Code	Value	Value Code
1	1ROE	75	75RE	750	750E	7.5K	7K5E
2	2ROE	100	100E	1K	1K0E	8K	8K0E
3	3ROE	125	125E	1.5K	1K5E	10K	10K0E
4	4ROE	150	150E	2K	2K0E	15K	15K0E
5	5ROE	200	200E	2.5K	2K5E	20K	20K0E
7.5	7R5E	250	250E	3K	3K0E	25K	25K0E
10	10RE	300	300E	3.5K	3K5E	40K	40K0E
25	25RE	400	400E	4K	4K0E	50K	50K0E
35	35RE	450	450E	5K	5K0E	100K	100K0E
50	50RE	500	500E	6K	6K0E		

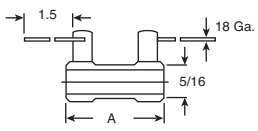
Features:

- Welded terminals
- Excellent heat dissipation
- Vitreous enamel coated

200 Series Lug and Lead Fixed Resistors

Specifications:

- Resistance tolerance: > 1Ω: ±10%
< 1Ω: ±5%
- Temperature coefficient: < 5: ±260
> 5: ±400

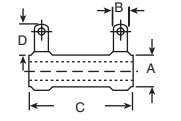


DIMENSIONS: in.

270 Series Fixed Resistors

Specifications:

- Resistance tolerance: ±5%
- Temperature coefficient: 1 to 20Ω, ±400ppm
above 20Ω, ±260ppm



For quantities greater than listed, call for quote.

8 Watts (Uses bracket 588-5)

For quantities greater than listed, call for quote.

MOUSER STOCK NO.	Range of Values (Ω)	Dim.: in. A	Price Each			
			1	25	100	250
588-B8J-Code	1, 2, 4, 5	1	3.50	3.14	2.79	2.45
588-B8J-Code	10, 75, 100, 200, 250, 500	1	3.36	3.02	2.68	2.47
588-B8J-Code	1K, 1.5K	1	3.65	2.88	2.49	2.42
588-B8J-Code	3K, 5K	1	3.19	2.88	2.55	2.22
588-B8J-Code	10K, 15K	1	3.46	3.13	2.76	2.43
588-B8J-Code	20K	1	5.61	4.71	4.18	3.93

12 Watts (Uses bracket 588-5)

For quantities greater than listed, call for quote.

MOUSER STOCK NO.	Range of Values (Ω)	Dim.: in. A	Price Each			
			1	25	100	250
588-B12J-Code	2, 3, 5	1 3/4	3.36	3.02	2.68	2.47
588-B12J-Code	10, 35, 50, 75, 100, 200, 250, 400	1 3/4	2.99	2.68	2.39	2.08
588-B12J-Code	1K, 1.5K	1 3/4	3.24	2.91	2.59	2.26
588-B12J-Code	2K, 3K, 3.5K	1 3/4	3.90	3.52	3.10	2.73
588-B12J-Code	5K	1 3/4	3.50	3.14	2.79	2.45
588-B12J-Code	10K, 15K	1 3/4	3.59	3.21	2.87	2.50
588-B12J-Code	20K, 25K	1 3/4	3.71	3.33	2.97	2.59
588-B12J-Code	50K	1 3/4	4.67	4.21	3.74	3.59

20 Watts (Uses bracket 588-7)

For quantities greater than listed, call for quote.

MOUSER STOCK NO.	Range of Values (Ω)	Dim.: in. A	Price Each			
			1	25	100	250
588-B20J-Code	1, 2, 5, 7.5, 10, 15, 25, 50	2	4.25	3.81	3.40	2.97
588-B20J-Code	100, 250, 500, 1K, 1.5K, 2K	2	3.94	3.53	3.15	2.87
588-B20J-Code	5K, 6K, 10K	2	4.44	3.98	3.54	3.11
588-B20J-Code	15K, 20K, 25K	2	4.91	4.42	3.94	3.79

MOUSER STOCK NO.	Range of Values (Ω)	Dimensions: in.				Price Each		
		A	B	C	D	1	25	100
L25J, 25 Watts Uses Bracket 588-9								
588-L25J-Code	1	9/16	1/4	2	9/16	5.49	4.67	3.84
588-L25J-Code	2, 3, 4, 5	9/16	1/4	2	9/16	5.65	4.80	3.96
588-L25J-Code	10, 25, 50, 75, 100, 150, 250, 750	9/16	1/4	2	9/16	5.37	4.55	3.75
588-L25J-Code	1K, 2K, 2.5K, 3K, 3.5K, 4K	9/16	1/4	2	9/16	5.64	4.79	3.95
588-L25J-Code	5K	9/16	1/4	2	9/16	5.71	4.84	3.99
588-L25J-Code	10K, 12K, 15K, 20K, 25K	9/16	1/4	2	9/16	6.84	5.81	4.78
588-L25J-Code	50K	9/16	1/4	2	9/16	7.35	6.26	5.15
588-L25J-Code	100K	9/16	1/4	2	9/16	7.84	6.66	5.48
L50J, 50 Watts Uses Bracket 588-9								
588-L50J-Code	1	9/16	1/4	4	9/16	8.48	7.20	5.94
588-L50J-Code	2, 4, 5	9/16	1/4	4	9/16	7.93	6.75	5.56
588-L50J-Code	10, 25, 50, 75, 100, 200, 250, 500, 1K, 1.5K, 2.5K, 3K, 4K, 5K, 7.5K	9/16	1/4	4	9/16	7.78	6.61	5.45
588-L50J-Code	10K, 20K	9/16	1/4	4	9/16	8.24	7.00	5.76
588-L50J-Code	25K, 50K	9/16	1/4	4	9/16	11.68	9.93	8.17
588-L50J-Code	100K	9/16	1/4	4	9/16	11.94	10.14	8.34
L100J, 100 Watts Uses Bracket 588-12								
588-L100J-Code	1, 2	3/4	1/4	6 1/2	9/16	11.65	9.91	9.13
588-L100J-Code	3, 4, 5	3/4	1/4	6 1/2	9/16	10.37	9.52	8.41
588-L100J-Code	10, 25, 50, 75	3/4	1/4	6 1/2	9/16	10.62	9.02	7.77
588-L100J-Code	100, 250, 500, 750	3/4	1/4	6 1/2	9/16	10.38	8.82	7.98
588-L100J-Code	1K, 2.5K, 5K	3/4	1/4	6 1/2	9/16	9.97	8.48	7.49
588-L100J-Code	10K, 15K, 20K, 25K	3/4	1/4	6 1/2	9/16	10.01	8.74	7.72
588-L100J-Code	50K	3/4	1/4	6 1/2	9/16	12.74	10.83	9.56
588-L100J-Code	100K	3/4	1/4	6 1/2	9/16	15.14	12.88	11.36
L225J, 225 Watts Uses Bracket 588-18								
588-L225J-Code	2	1 1/8	5/16	10 1/2	5/8	34.31	30.64	28.35
588-L225J-Code	4, 5	1 1/8	5/16	10 1/2	5/8	19.16	17.25	15.33
588-L225J-Code	10, 25, 50, 100	1 1/8	5/16	10 1/2	5/8	16.63	14.97	13.30
588-L225J-Code	150, 250, 500, 750	1 1/8	5/16	10 1/2	5/8	15.86	14.29	12.69
588-L225J-Code	1K, 1.5K, 2K, 2.5K, 3K, 5K	1 1/8	5/16	10 1/2	5/8	15.33	13.80	12.26
588-L225J-Code	10K, 15K, 20K, 25K	1 1/8	5/16	10 1/2	5/8	15.92	14.33	12.74
588-L225J-Code	50K	1 1/8	5/16	10 1/2	5/8	20.93	19.67	17.48
588-L225J-Code	100K	1 1/8	5/16	10 1/2	5/8	18.64	16.76	14.90

OHMITE 210 SERIES ADJUSTABLE VITREOUS ENAMEL POWER RESISTORS - 12 WATT TO 225 WATT

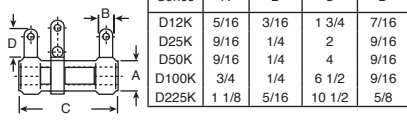
Specifications:

- Resistance tolerance: ±10%
- Temperature coefficient: ±260ppm
- Vitreous enamel coated

DIMENSIONS: in.

Cross Reference Chart

Ohmite	Clarostat	Huntington
D12K	VP10FA	AVT-12
D25K	VP25KA	AVT-25
D50K	VP50KA	AVT-50
D100K	VK100NA	AVT-100
D225K	VK200WA	AVT-200



For quantities greater than listed, call for quote.

MOUSER STOCK NO.	Range of Values (Ω)	Price Each		
		1	25	100
D12K, 12 Watts Uses Bracket 588-5				
588-D12K-Value	1.0, 2.0, 3.0, 5.0	11.97	10.96	10.42
588-D12K-Value	10, 15, 20, 25, 50, 75, 100, 150, 200	12.10	11.49	9.73
588-D12K-Value	250, 500, 750	10.22	8.69	8.30
588-D12K-Value	1K, 1.5K, 2K, 2.5K, 3.5K	12.83	11.90	11.32
588-D12K-Value	5K, 10K	12.96	11.85	11.28
D25K, 25 Watts Uses Bracket 588-9				
588-D25K-Value	1.0, 2.0	11.79	10.91	10.41
588-D25K-Value	3.0, 5.0, 10, 15, 20, 25, 50, 75, 100, 150, 200, 250, 500	13.60	10.76	9.22
588-D25K-Value	750, 1K, 1.5K, 2K, 2.5K, 3.5K	11.44	10.77	10.43
588-D25K-Value	5K, 10K	12.99	11.88	11.32
588-D25K-Value	25K	13.42	12.07	10.74

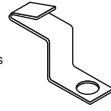
MOUSER STOCK NO.	Range of Values (Ω)	Price Each		
		1	25	100
D50K, 50 Watts Uses Bracket 588-9				
588-D50K-Value	1.0, 2.0, 3.0	15.79	13.43	12.07
588-D50K-Value	5.0	19.53	17.57	15.62
588-D50K-Value	10, 25, 50,	15.81	14.88	14.43
588-D50K-Value	100, 250, 500, 750	15.81	14.88	14.43
588-D50K-Value	1K, 2K, 2.5K,	14.85	12.61	12.03
588-D50K-Value	5K, 10K, 25K	18.20	16.40	14.55
D100K, 100 Watts Uses Bracket 588-12				
588-D100K-Value	1.0	24.38	21.54	20.09
588-D100K-Value	2.0, 3.0, 5.0, 10	23.06	20.96	19.57
588-D100K-Value	25, 50, 100, 250, 500	19.09	17.34	15.76
588-D100K-Value	1K, 1.5K, 2.5K,	19.09	17.34	15.76
588-D100K-Value	10K, 25K	18.93	17.12	16.02
D225K, 225 Watts Uses Bracket 588-18				
588-D225K-Value	1.0	51.90	47.45	41.52
588-D225K-Value	2.0, 3.0	44.10	40.24	34.71
588-D225K-Value	5.0	45.39	39.73	34.04
588-D225K-Value	10, 25, 50	36.11	35.64	34.29
588-D225K-Value	100, 250, 500, 1K, 10K	34.15	29.87	25.62

RESISTOR MOUNTING BRACKETS

For quantities greater than listed, call for quote.

MOUSER STOCK NO.	May Be Used With These Resistors	Price Each	
		1	10
588-5E	B8J, B12J, D12K	.40	.37
588-7E	B20J	.46	.37
588-9E	L25J, L50J, D25K, D50K	.89	.597

Requires 2 brackets per resistor.



For quantities greater than listed, call for quote.

MOUSER STOCK NO.	May Be Used With These Resistors	Price Each	
		1	10
588-12-E	L100J, D100K	.62	.597
588-18-E	L255J, D252K	2.03	1.35