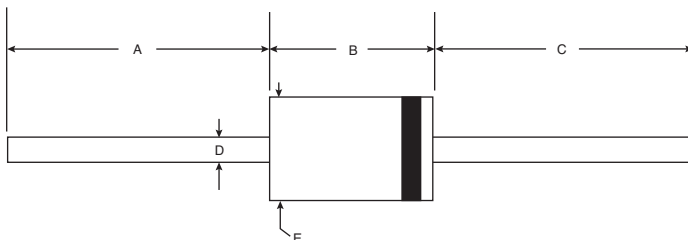


LITTELFUSE TVS Diodes

RoHS Compliant This product is RoHS compliant.



DIMENSIONS: mm					
Series	A	B	C	D	E
1.5KW	25.4 Min.	9.5/7.2	25.4 Min.	ø1.07/0.96	ø5.3/4.8
5KP	25.4 Min.	9.1/8.6	25.4 Min.	ø1.32/1.22	ø9.1/8.6
P6KE	25.4 Min.	7.6/5.8	25.4 Min.	ø3.6/2.6	ø0.86/0.71



1.5KE SERIES

• 1500 Watt

MOUSER STOCK NO.						Reverse Standoff (V _R)	Breakdown Voltage VBR (Volts) @ IT			Polarity	Price Each			
Mfr.	Mfr. Part No.	Min.	Max.	(mA)	1		10	100	250					
576—1.5KE9.1	7.37	8.19	10	1	Unidirectional	.64	.57	.452	.394					
576—1.5KE10	8.1	9	11	1	Unidirectional	.64	.57	.452	.394					
576—1.5KE11	8.92	9.9	12.1	1	Unidirectional	.64	.57	.452	.394					
576—1.5KE12	9.72	10.8	13.2	1	Unidirectional	.64	.57	.452	.394					
576—1.5KE15	12.1	13.5	16.5	1	Unidirectional	.64	.57	.452	.394					
576—1.5KE15C	12.1	13.5	16.5	1	Bidirectional	.37	.36	.342	.323					
576—1.5KE16	12.9	14.4	17.6	1	Unidirectional	.64	.57	.452	.394					
576—1.5KE18	14.5	16.2	19.8	1	Unidirectional	.64	.57	.452	.394					
576—1.5KE22	17.8	19.8	24.2	1	Unidirectional	.64	.57	.452	.394					
576—1.5KE24	19.4	21.6	26.4	1	Unidirectional	.64	.57	.452	.394					
576—1.5KE27	21.8	24.3	29.7	1	Unidirectional	.64	.57	.452	.394					
576—1.5KE30	24.3	27	33	1	Unidirectional	.64	.57	.452	.394					
576—1.5KE33	26.8	29.7	36.3	1	Unidirectional	.64	.57	.452	.394					
576—1.5KE36	29.1	32.4	39.6	1	Unidirectional	.64	.57	.452	.394					
576—1.5KE39	31.6	35.1	42.9	1	Unidirectional	.64	.57	.452	.394					
576—1.5KE43	34.8	38.7	47.3	1	Unidirectional	.64	.57	.452	.394					
576—1.5KE47	38.1	42.3	51.7	1	Unidirectional	.64	.57	.452	.394					

5KP SERIES

• 5000 Watt

MOUSER STOCK NO.						Reverse Standoff (V _R)	Breakdown Voltage VBR (Volts) @ IT			Polarity	Price Each			
Mfr.	Mfr. Part No.	Min.	Max.	(mA)	1		10	100	250					
576—5KP6.0	6	6.67	8.15	50	Unidirectional	2.92	2.49	2.06	1.84					
576—5KP7.5	7.5	8.33	10.2	5	Unidirectional	2.92	2.49	2.06	1.84					
576—5KP10	10	11.1	13.6	5	Unidirectional	2.92	2.49	2.06	1.84					
576—5KP13	13	14.4	17.6	5	Unidirectional	2.92	2.49	2.06	1.84					
576—5KP14	14	15.6	19.1	5	Unidirectional	2.92	2.49	2.06	1.84					
576—5KP15	15	16.7	20.4	5	Unidirectional	2.92	2.49	2.06	1.84					
576—5KP18	18	20	24.4	5	Unidirectional	2.92	2.49	2.06	1.84					
576—5KP22	22	24.4	29.8	5	Unidirectional	2.92	2.49	2.06	1.84					
576—5KP26A	26	28.9	35.3	5	Unidirectional	2.92	2.49	2.06	1.84					
576—5KP28	28	31.1	39	5	Unidirectional	2.92	2.49	2.06	1.84					
576—5KP33	33	36.7	44.9	5	Unidirectional	2.92	2.49	2.06	1.84					

P6KE SERIES

• 6000 Watt

MOUSER STOCK NO.						Reverse Standoff (V _R)	Breakdown Voltage VBR (Volts) @ IT			Polarity	Price Each			
Mfr.	Mfr. Part No.	Min.	Max.	(mA)	1		10	100	250					
576—P6KE7.5	6.05	6.75	8.25	10	Unidirectional	.34	.322	.271	.241					
576—P6KE8.2	6.63	7.38	9.02	10	Unidirectional	.34	.322	.271	.241					
576—P6KE9.1	7.37	8.19	10	1	Unidirectional	.34	.322	.271	.241					
576—P6KE10	8.1	9	11	1	Unidirectional	.34	.322	.271	.241					
576—P6KE11	8.92	9.9	12.1	1	Unidirectional	.34	.322	.271	.241					
576—P6KE12	9.72	10.8	13.2	1	Unidirectional	.34	.322	.271	.241					
576—P6KE16	12.9	14.4	17.6	1	Unidirectional	.34	.322	.271	.241					
576—P6KE18	14.5	16.2	19.8	1	Unidirectional	.34	.322	.271	.241					
576—P6KE24	19.4	21.6	26.4	1	Unidirectional	.34	.322	.271	.241					
576—P6KE30	24.3	27	33	1	Unidirectional	.34	.322	.271	.241					
576—P6KE30A	25.6	28.5	31.5	1	Unidirectional	.38	.34	.28	.25					
576—P6KE33	26.8	29.7	36.3	1	Unidirectional	.34	.322	.271	.241					
576—P6KE36	29.1	32.4	39.6	1	Unidirectional	.34	.322	.271	.241					
576—P6KE39	31.6	35.1	42.9	1	Unidirectional	.34	.322	.271	.241					
576—P6KE43	34.8	38.7	47.3	1	Unidirectional	.34	.322	.271	.241					
576—P6KE47	38.1	42.3	51.7	1	Unidirectional	.34	.322	.271	.241					