

ON SEMICONDUCTOR Transistors

ON Semiconductor®



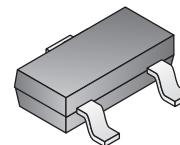
Transistors
ON Semiconductor

ON SEMICONDUCTOR LOW NOISE BIPOLAR TRANSISTORS

◆ Surface Mount Device

For quantities greater than listed, call for quote.

MOUSER STOCK NO.	ON Semi Part No.	Package	VCEO Max (V)	IC Max (A)	hFE		Price Each			
					Min	Max	1	25	100	500
NPN										
◆ 863-MMBT5089LT1G	MMBT5089LT1G	SOT-23	25	0.05	400	1200	.28	.133	.095	.072
◆ 863-MMBT5088LT1G	MMBT5088LT1G	SOT-23	30	0.05	300	900	.26	.124	.088	.067
◆ 863-BC550CG	BC550CG	TO-92	45	0.1	450	900	.30	.143	.102	.078
◆ 863-MPSA18RLRAG	MPSA18RLRAG	TO-92	45	0.2	500	1500	.42	.198	.141	.108
◆ 863-MMBT2484LT1G	MMBT2484LT1G	SOT-23	60	0.1	250	-	.32	.151	.107	.082
PNP										
◆ 863-MMBT5087LT1G	MMBT5087LT1G	SOT-23	-50	-0.05	250	800	.09	.083	.033	.032



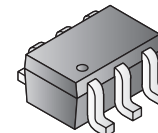
SOT-23

ON SEMICONDUCTOR LOW VCE BIPOLAR TRANSISTORS

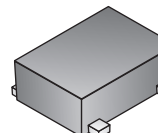
◆ Surface Mount Device

For quantities greater than listed, call for quote.

MOUSER STOCK NO.	ON Semi Part No.	Package	VCEO Min (V)	IC Max (A)	hFE		Price Each			
					Min	Max	1	25	100	500
NPN										
◆ 863-NSS20601CF8T1G	NSS20601CF8T1G	ChipFET	20	8	200	-	.60	.40	.353	.299
◆ 863-NSS40301MZ4T1G	NSS40301MZ4T1G	SOT-223	40	3	200	500	.59	.43	.318	.273
◆ 863-NSS40601CF8T1G	NSS40601CF8T1G	ChipFET	40	8	200	-	.60	.40	.353	.299
◆ 863-NSS60601MZ4T1G	NSS60601MZ4T1G	SOT-223	60	6	120	360	.68	.478	.354	.304
PNP										
◆ 863-NSS60600MZ4T1G	NSS60600MZ4T1G	SOT-223	60	6	70	360	.52	.44	.396	.294
◆ 863-NSS1C200LT1G	NSS1C200LT1G	SOT-23	100	2	50	360	.24	.23	.222	.198
◆ 863-NSS12100UW3TCG	NSS12100UW3TCG	WDFN	12	1	200	400	.54	.52	.499	.445
◆ 863-NSS12100XV6T1G	NSS12100XV6T1G	SOT 563	-12	-1	90	-	.45	.308	.26	.216
◆ 863-NSS12200LT1G	NSS12200LT1G	SOT-23	-12	-2	250	300	.49	.40	.36	.31
◆ 863-NSS20200LT1G	NSS20200LT1G	SOT-23	-20	-2	250	300	.44	.32	.285	.245
◆ 863-NSS40200LT1G	NSS40200LT1G	SOT-23	-40	-2	220	300	.49	.40	.36	.32
◆ 863-NSS40600CF8T1G	NSS40600CF8T1G	ChipFET	-40	-6	220	300	.80	.70	.50	.40
◆ 863-NSS60200LT1G	NSS60200LT1G	SOT-23	-60	-2	150	-	.44	.32	.285	.245



SC-88



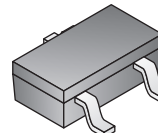
SOT-723

ON SEMICONDUCTOR MEDIUM POWER BIPOLAR TRANSISTORS

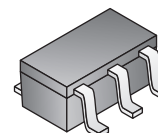
◆ Surface Mount Device

For quantities greater than listed, call for quote.

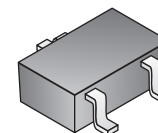
MOUSER STOCK NO.	ON Semi Part No.	Package	VCEO Max (V)	IC Max (A)	hFE		Price Each			
					Min	Max	1	25	100	500
NPN										
◆ 863-BCP68T1G	BCP68T1G	SOT-223	20	1	85	375	.41	.284	.237	.197
◆ 863-PZT2222AT1G	PZT2222AT1G	SOT-223	40	0.6	100	300	.34	.278	.20	.161
◆ 863-2N4921G	2N4921G	Case 77	40	3.0	30	150	.58	.456	.397	.337
◆ 863-2N4922G	2N4922G	Case 77	60	3	30	150	.58	.456	.397	.337
◆ 863-2N6043G	2N6043G	TO-220	60	8	1000	20000	.86	.672	.509	.434
◆ 863-2N4923G	2N4923G	Case 77	80	1	30	150	.58	.456	.397	.337
◆ 863-BCP56T1G	BCP56T1G	SOT-223	80	1	40	250	.55	.322	.187	.15
◆ 863-BCP56-16T1G	BCP56-16T1G	SOT-223	80	1	100	250	.55	.322	.187	.15
◆ 863-BD139G	BD139G	Case 77	80	1.5	40	250	.49	.385	.335	.285
◆ 863-MJE344G	MJE344G	Case 77	200	0.5	30	300	.51	.40	.348	.296
◆ 863-MJE340G	MJE340G	Case 77	300	0.5	30	240	.51	.40	.348	.296
PNP										
◆ 863-BCP69T1G	BCP69T1G	SOT-223	-20	-1	85	375	.36	.241	.185	.153
◆ 863-MJE371G	MJE371G	Case 77	-40	-4	40	-	.55	.482	.341	.286
◆ 863-2N4920G	2N4920G	Case 77	-80	-1	30	150	.58	.46	.36	.302
◆ 863-BCP53T1G	BCP53T1G	SOT-223	-80	-1.5	40	250	.40	.241	.196	.158
◆ 863-BD140G	BD140G	Case 77	-80	-1.5	40	250	.49	.386	.304	.255
◆ 863-BCP53-16T1G	BCP53-16T1G	SOT-223	-80	-1.5	100	250	.40	.241	.196	.158
◆ 863-MJE350G	MJE350G	Case 77	-300	-0.5	30	240	.49	.413	.292	.245



SC-59



SOT-353



SC-70

ON SEMICONDUCTOR SWITCHING TRANSISTORS

◆ Surface Mount Device

For quantities greater than listed, call for quote.

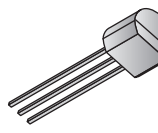
MOUSER STOCK NO.	ON Semi Part No.	Package	VCEO Min (V)	IC Max (A)	hFE Min/Max	P _D Max(W)	Price Each			
							1	25	100	500
NPN										
◆ 863-MMBT918LT1G	MMBT918LT1G	SOT-23	15	0.05	20/-	0.3	.40	.19	.134	.102
◆ 863-MMBT2369ALT1G	MMBT2369ALT1G	SOT-23	15	0.2	-/120	0.3	.27	.13	.093	.07
◆ 863-MMBT2369LT1G	MMBT2369LT1G	SOT-23	15	0.2	40/120	0.3	.27	.13	.093	.079
◆ 863-MMBT10LT1G	MMBT10LT1G	SOT-23	25	-	60/-	0.3	.40	.19	.134	.102
◆ 863-MPSH10RLRPG	MPSH10RLRPG	TO-92	25	-	60/-	0.35	.27	.169	.119	.095
◆ 863-MMBT4401LT1G	MMBT4401LT1G	SOT-23	40	0.6	100/300	0.225	.19	.083	.053	.038
◆ 863-MMBT4401M3T5G	MMBT4401M3T5G	SOT-723	40	0.6	100/300	0.265	.11	.10	.096	.085
◆ 863-MMBT4401WT1G	MMBT4401WT1G	SC-70	40	0.6	100/300	0.15	.27	.117	.076	.054
PNP										
◆ 863-MMBT4403LT1G	MMBT4403LT1G	SOT-23	-40	-0.6	100/300	0.225	.21	.192	.061	.043

ON SEMICONDUCTOR JFETS

◆ Surface Mount Device

For quantities greater than listed, call for quote.

MOUSER STOCK NO.	ON Semi Part No.	Package	VDES MAX (V)	PD Max (mW)	I _{pss} (mA)		Price Each			
					Min	Max	1	25	100	500
N-Channel										
◆ 863-MMBFJ309LT1G	MMBFJ309LT1G	SOT-23	25	225	12	30	.35	.28	.199	.164
◆ 863-J310G	J310G	TO-92	25	350	24	60	.33	.21	.159	.129
◆ 863-MMBFJ310LT1G	MMBFJ310LT1G	SOT-23	25	225	24	60	.35	.28	.199	.164
◆ 863-MMBFU310LT1G	MMBFU310LT1G	SOT-23	25	225	24	60	.35	.28	.199	.164
◆ 863-MMBF4391LT1G	MMBF4391LT1G	SOT-23	30	225	50	150	.35	.28	.199	.164
◆ 863-MMBF4392LT1G	MMBF4392LT1G	SOT-23	30	225	25	75	.35	.28	.199	.164
◆ 863-MMBF4393LT1G	MMBF4393LT1G	SOT-23	30	225	5	30	.39	.28	.199	.14
P-Channel										
◆ 863-MMBFJ175LT1G	MMBFJ175LT1G	SOT-23	-25	225	7	60	.28	.25	.174	.143
◆ 863-MMBFJ177LT1G	MMBFJ177LT1G	SOT-23	-25	225	1.5	20	.39	.28	.199	.164



TO-92