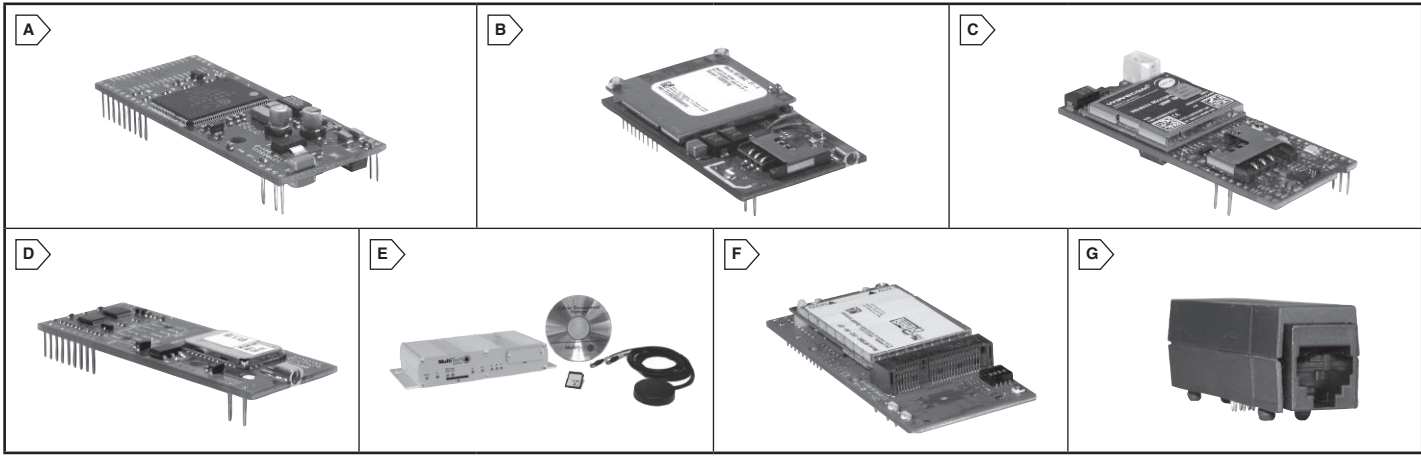


MULTI-TECH Universal Sockets and Embedded Modems



Embedded Modules
Multi-Tech Systems

Products may be RoHS compliant. Check mouser.com for RoHS status.



UNIVERSAL SOCKET MODULES

Multi-Tech's Universal Socket is a flexible, comm-port architecture that provides cellular, Ethernet, PSTN or Wi-Fi® network access with interchangeable modules.

- Interchangeable socket module
- Quick-to-market future networks
- 2 Year Warranty
- Easy migration to Universal Socket
- Global approvals

For quantities greater than listed, call for quote.

MOUSER STOCK NO.	Multi-Tech Part No.	Fig.	Description	Voltage (V)	Price Each			
					1	10	25	50
SocketModem® - Analog - Dial-Up								
899-MT2492SMI-22	MT2492SMI-22	A	V.22 Serial/Data Only - Embedded Modem	5	16.93	16.86	16.75	16.53
899-MT2492SMI-L-92	MT2492SMI-L-92	A	V.92 Serial/Data Only - Embedded Modem	3.3	24.12	24.02	23.86	23.55
899-MT9234SMI-92.R1	MT9234SMI-92.R1	A	V.92 Serial Data, V.34 Fax - Embedded Modem	5	48.11	46.76	44.74	42.05
899-MT9234SMI-L-92R1	MT9234SMI-L-92.R1	A	V.92 Serial Data, V.34 Fax - Embedded Modem	3.3	48.11	46.76	44.74	42.05
SocketModem® GPRS/EDGE/CDMA/HSDPA/iCell/Cell - Cellular								
899-MTSMC-E1	MTSMC-E1	B	Embedded Quad Band EDGE Modem Class 12	5	129.80	128.83	126.88	125.90
899-MTSMC-G-F4.R1	MTSMC-G-F4.R1	C	Quad-Band GPRS Class 10 - Embedded Modem	5	144.64	140.63	126.56	125.00
SocketWireless® Device Server								
899-MTS2BTSMI-L.R3	MTS2BTSMI-L.R3	D	Embedded Serial-to-Bluetooth Device Server	3.3	64.00	62.22	58.95	58.18
899-MTS2BTSMI.R3	MTS2BTSMI.R3	D	Embedded Serial-to-Bluetooth Device Server	5	66.06	64.22	60.84	60.05

DEVELOPMENT KITS

For quantities greater than listed, call for quote.

MOUSER STOCK NO.	Multi-Tech Part No.	Fig.	Description	Price Each
Universal Socket Development Kit (Module Not Included)				
899-MTSMI-UDK	MTSMI-UDK	-	Development Board with RS-232 DB-25 Connector, Universal Power Supply, RJ-11 Jack, RS-232 Cable and Developer Guide CD	312.50
EDGE Modem Developers Kit				
899-MTCDP-E1-DK	MTCDP-E1-DK-0.0	E	DE-9 RS-232 connector, Slot for SD memory flash card, 5 programmable LEDs for application specific use	599.00

SOCKETMODEM® ICELL INTELLIGENT CELLULAR EVDO MODEMS

For quantities greater than listed, call for quote.

MOUSER STOCK NO.	Multi-Tech Part No.	Fig.	Description	Voltage (V)	Price Each	
					1	10
899-MTSMC-EV2-IPN2SP	MTSMC-EV2-IP-N2-SP	F	EV-DO RevA 5V Serial, Sprint 800/1900MHz	5	212.55	207.05
899-MTSMC-EV2-IPN3SP	MTSMC-EV2-IP-N3-SP	F	EV-DO RevA 5V Serial, Verizon 800/1900MHz	5	212.55	207.05
899-MTSMCEV2MIIPN2SP	MTSMC-EV2-MI-IP-N2-SP	F	EV-DO RevA 5V Serial+USB Sprint 800/1900MHz	5	212.55	207.05
899-MTSMCEV2MIIPN3SP	MTSMC-EV2-MI-IP-N3-SP	F	EV-DO RevA 5V Serial+USB Verizon 800/1900MHz	5	212.55	207.05
899-MTSMC-EV2-GPN2SP	MTSMC-EV2-GP-N2-SP	F	EV-DO RevA with GPS Serial, Sprint 800/1900MHz	5	232.25	226.22
899-MTSMC-EV2-GPN3SP	MTSMC-EV2-GP-N3-SP	F	EV-DO RevA with GPS Serial, Verizon 800/1900MHz	5	232.25	226.22

RJMODEM™

The Multi-Tech Serial Data RJModem creates communication-ready devices by integrating modem functionality into the most compact, integrated device. The first-of-its kind RJ11 form factor includes the controller, data pump, DAA and RJ-11 connector providing device manufacturers with the ability to integrate dial-up connectivity into any product design.

- RJ-11 Form Factor
- Global approvals
- Easy migration to future networks

For quantities greater than listed, call for quote.

MOUSER STOCK NO.	Multi-Tech Part No.	Fig.	Description	Voltage (V)	Price Each			
					1	10	25	50
Modems								
899-MT5656RJ-92.R3	MT5656RJ-92.R3	G	Embedded V.92 Data Modem, 56K, Serial Data Only	5	42.35	42.17	41.89	41.43
899-MT5656RJ-L-34.R3	MT5656RJ-L-34.R3	G	Embedded V.34 Data Modem, 33.6K, Serial Data Only	3.3	39.69	39.52	39.26	38.75
RJModem™ Development Kit (RJModem Not Included)								
899-MTRJ-DK	MTRJ-DK	-	RJModem Developer Kit 100-240V	-	187.50	-	-	-

ACCESSORIES

For quantities greater than listed, call for quote.

MOUSER STOCK NO.	Multi-Tech Part No.	Description	Price Each			
			1	25	50	100
899-ANBT-1HRA	ANBT-1HRA	Bluetooth/Wi-Fi Hinged Antenna, Reverse Polarity, 4"	17.00	16.53	16.19	15.87
899-ANCF2-10HRA	ANCF2-10HRA	850/1900 MHz Hinged Antenna 4"	7.00	6.81	6.67	6.54
899-ANF1-1HRA	ANF1-1HRA	900/1800 MHz Hinged Antenna 4"	7.00	6.81	6.67	6.54
899-ANQB-10HRA	ANQB-10HRA	850/900/1800/1900 MHz Hinged Antenna, 7"	11.00	10.70	10.48	10.27
899-CARSA-MMCX-10	CARSA-MMCX-10	Reverse SMA-to-MMCX Coax RF Cable 6"	12.00	11.67	11.43	11.20
899-CASMA-MMCX-1	CASMA-MMCX-1	SMA-to-MMCX Coax RF Cable 6"	12.00	11.67	11.43	11.20

