

NXP SEMICONDUCTOR Diodes



This product is RoHS compliant.

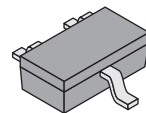
Diodes & Rectifiers

NXP Semiconductor

HIGH-SPEED SWITCHING DIODES

MOUSER STOCK NO.	NXP Part No.	Package	Configuration	V _R (Max.) (V)	I _F (Max.) (mA)	V _F		I _R (Max.) (μA)	t _{rr} (ns.)	Price Each		
						@ I _F (mV)	@ I _F (mA)			1	25	100
771-BAS16LD315	BAS16LD,315	SOD-882	Single	100	215	715	1	0.5	4	.05	.042	.04
771-NUR460133	NUR460,133	DO-201AD	Single	600	110	1.28	4000	50	65	.48	.36	.27

For quantities greater than listed, call for quote.

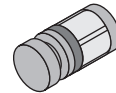


SOT23/SOT323

RF PIN DIODES

MOUSER STOCK NO.	NXP Part No.	Package	No. of Diodes	V _R (Max.) (V)	V _F (V)		I _F (Max.) (mA)	I _R @ V _R =20V (Max.) (μA)	Price Each		
					Typ.	Max.			1	25	100
771-BAP64Q125	BAP64Q,125	TSOP-5	4	100	0.95	1.1	100	1	1.30	1.18	1.02

For quantities greater than listed, call for quote.

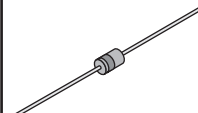


SOD80

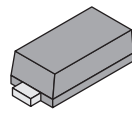
SMALL SIGNAL SCHOTTKY DIODES

MOUSER STOCK NO.	NXP Part No.	Package	Configuration	V _R (Max.) (V)	I _F (Max.) (mA)	V _F (Max.) (mV)	@ I _F (mA)	I _R (Max.) (μA)	@ V _R (V)	Price Each		
										1	25	100
771-BAT754S-T/R	BAT754S	SOT-23	Dual Series	30	200	340	10	2	25	.10	.094	.088
771-BAT754C-T/R	BAT754C	SOT-23	Dual Common Cathode	30	200	340	10	2	25	.09	.087	.082
771-BAS85-T/R	BAS85	SOD-80	Single	30	200	400	10	2	25	.07	.064	.06
771-BAT85-T/R	BAT85	SOD-68	Single	30	200	400	10	2	25	.06	.06	.057
771-BAT54-T/R	BAT54	SOT-23	Single	30	200	400	10	2	25	.03	.023	.021
771-BAT54H-T/R	BAT54H	SOD-123	Single	30	200	400	10	2	25	.05	.049	.046
771-BAT54W-T/R	BAT54W	SOT-323	Single	30	200	400	10	2	25	.04	.035	.033
771-1PS76SB10-T/R	1PS76SB10	SOD-323	Single	30	200	400	10	2	25	.06	.054	.05
771-BAT54S-T/R	BAT54S	SOT-23	Dual Series	30	200	400	10	2	25	.03	.029	.027
771-BAT54SW-T/R	BAT54SW	SOT-323	Dual Series	30	200	400	10	2	25	.04	.035	.033
771-BAT54C-T/R	BAT54C	SOT-23	Dual Common Cathode	30	200	400	10	2	25	.03	.029	.027
771-BAT54CW-T/R	BAT54CW	SOT-323	Dual Common Cathode	30	200	400	10	2	25	.04	.035	.033
771-BAT54A-T/R	BAT54A	SOT-23	Dual Common Anode	30	200	400	10	2	25	.03	.029	.027
771-BAT54AW-T/R	BAT54AW	SOT-323	Dual Common Anode	30	200	400	10	2	25	.04	.035	.033
771-BAT74-T/R	BAT74	SOT-143	Dual Isolated	30	200	400	10	2	25	.07	.069	.065
771-BAT54XY-T/R	BAT54XY	SOT-363	Dual-Dual Series	30	200	400	10	2	25	.13	.123	.116
771-BAS40H-T/R	BAS40H	SOD-123	Single	40	120	500	10	1	30	.15	.12	.107
771-BAS40-04-T/R	BAS40-04	SOT-23	Dual Series	40	120	500	10	1	30	.04	.034	.032
771-BAS40-04W-T/R	BAS40-04W	SOT-323	Dual Series	40	120	500	10	1	30	.09	.084	.079
771-BAT721S-T/R	BAT721S	SOT-23	Dual Series	40	200	300	10	15	30	.09	.084	.079
771-BAT721C-T/R	BAT721C	SOT-23	Dual Common Cathode	40	200	300	10	15	30	.09	.084	.079
771-BAT721A-T/R	BAT721A	SOT-23	Dual Common Anode	40	200	300	10	15	30	.12	.112	.106
771-PMEG4002EL-T/R	PMEG4002EL	SOD-882	Single	40	200	360	10	0.5	25	.07	.069	.065
771-BAS86-T/R	BAS86	SOD-80	Single	50	200	450	10	5	40	.05	.045	.042
771-BAS70-T/R	BAS70	SOT-23	Single	70	70	750	10	0.1	50	.03	.027	.025
771-BAS70-04-T/R	BAS70-04	SOT-23	Dual Series	70	70	750	10	0.1	50	.04	.037	.035
771-BAS70-04W-T/R	BAS70-04W	SOT-323	Dual Series	70	70	750	10	0.1	50	.05	.049	.046
771-BAS70-05-T/R	BAS70-05	SOT-23	Dual Common Cathode	70	70	750	10	0.1	50	.04	.037	.035
771-BAS70-06-T/R	BAS70-06	SOT-23	Dual Common Anode	70	70	750	10	0.1	50	.04	.037	.035
771-BAS70-07-T/R	BAS70-07	SOT-143	Dual Isolated	70	70	750	10	0.1	50	.08	.076	.072

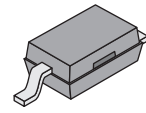
For quantities greater than listed, call for quote.



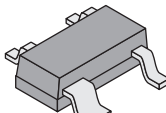
SOD68/DO-201AD



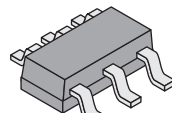
SOD123/SOD523



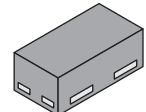
SOD323



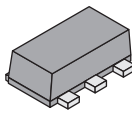
SOT143



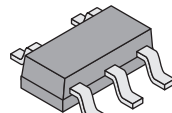
SOT363



SOD882



SOT666



TSOP-5

LOW VF SCHOTTKY DIODES

MOUSER STOCK NO.	NXP Part No.	Package	Configuration	Features	I _F Max. (A)	V _R Max. (V)	V _F Max. (mV) @ I _F Max.	I _R Max. (mA) @ V _R Max.	Price Each		
									1	25	100
771-PMEG3002AEB-T/R	PMEG3002AEB	SOD-523	Single	Low VF/Low IR	0.2	30	480	0.05	.07	.069	.065
771-PMEG3002AELD315	PMEG3002AELD,315	SOD-882	Single	Low VF/Low IR	0.2	30	480	0.01	.09	.087	.082
771-PMEG4002EL-T/R	PMEG4002EL	SOD-882	Single	Low VF/Low IR	0.2	40	600	0.01	.07	.069	.065
771-PMEG4002ELD315	PMEG4002ELD,315	SOD-882	Single	Low VF/Low IR	0.2	40	600	0.05	.09	.087	.082
771-PMEG2005AELD315	PMEG2005AELD,315	SOD-882	Single	Low VF/Low IR	0.5	20	440	0.6	.14	.11	.101
771-PMEG2005ET215	PMEG2005ET215	SOT-23	Single	Low VF/Low IR	0.5	20	390	0.2	.09	.087	.082
771-PMEG2005EJ115	PMEG2005EJ115	SOD-323	Single	Low VF/Low IR	0.5	20	390	0.2	.40	.33	.27
771-PMEG2005ELD315	PMEG2005ELD,315	SOD-882	Single	Low VF/Low IR	0.5	20	500	0.03	.14	.11	.101
771-PMEG3005ET-T/R	PMEG3005ET	SOT-23	Single	Low VF/Low IR	0.5	30	430	0.15	.42	.34	.28
771-PMEG3005ELD315	PMEG3005ELD,315	SOD-882	Single	Low VF/Low IR	0.5	30	500	0.2	.09	.087	.082
771-PMEG3005EH-T/R	PMEG3005EH	SOD-123	Single	Low VF/Low IR	0.5	30	430	0.15	.40	.33	.27
771-PMEG4005EH-T/R	PMEG4005EH	SOD-123	Single	Low VF/Low IR	0.5	40	470	0.1	.09	.087	.082
771-PMEG4005EJ-T/R	PMEG4005EJ	SOD-323	Single	Low VF/Low IR	0.5	40	470	0.1	.09	.087	.082
771-PMEG2010AEH-T/R	PMEG2010AEH	SOD-123	Single	Very Low VF	1	20	430	0.2	.11	.105	.099
771-PMEG2010EH115	PMEG2010EH115	SOD-123	Single	Low VF/Low IR	1	20	500	0.2	.11	.105	.099
771-PMEG2010EJ-T/R	PMEG2010EJ	SOD-323	Single	Low VF/Low IR	1	20	500	0.2	.36	.30	.249
771-PMEG2010EA-T/R	PMEG2010EA	SOD-323	Single	Very Low IR	1	20	550	0.05	.11	.105	.099
771-PMEG3010CEJ-T/R	PMEG3010CEJ	SOD-323	Single	Very Low IR	1	30	520	0.05	.10	.095	.09
771-PMEG3010ET-T/R	PMEG3010ET	SOT-23	Single	Low VF/Low IR	1	30	560	0.15	.38	.31	.261
771-PMEG4010EJ-T/R	PMEG4010EJ	SOD-323	Single	Low VF/Low IR	1	40	640	0.1	.10	.095	.09
771-PMEG4010CEJ-T/R	PMEG4010CEJ	SOD-323	Single	Very Low IR	1	40	570	0.05	.10	.095	.09
771-PMEG6010CEH-T/R	PMEG6010CEH	SOD-123	Single	Very Low IR	1	60	710	0.1	.11	.105	.099
771-PMEG6010CEJ-T/R	PMEG6010CEJ	SOD-323	Single	Very Low IR	1	60	710	0.1	.11	.105	.099
771-PMEG3015EH-T/R	PMEG3015EH	SOD-123	Single	Very Low VF	1.5	30	550	1	.11	.108	.101
771-PMEG1020EH-T/R	PMEG1020EH	SOD-123	Single	Very Low VF	2	10	460	3	.39	.33	.273
771-PMEG1020EJ-T/R	PMEG1020EJ	SOD-323	Single	Very Low VF	2	10	460	3	.39	.33	.273
771-PMEG1020EV115	PMEG1020EV115	SOT-666	Single	Very Low VF	2	10	460	3	.09	.086	.081
771-PMEG2020EH-T/R	PMEG2020EH	SOD-123	Single	Very Low VF	2	20	525	0.2	.12	.114	.108
771-PMEG2020AEA-T/R	PMEG2020AEA	SOD-323	Single	Very Low VF	2	20	525	0.2	.12	.114	.108
771-PMEG2020EJ-T/R	PMEG2020EJ	SOD-323	Single	Very Low VF	2	20	525	0.2	.12	.114	.108
771-PMEG3020EH-T/R	PMEG3020EH	SOD-123	Single	Very Low VF	2	30	620	1	.39	.33	.273
771-PMEG3020EJ-T/R	PMEG3020EJ	SOD-323	Single	Very Low VF	2	30	620	1	.39	.33	.273
771-PMEG1030EH-T/R	PMEG1030EH	SOD-123	Single	Very Low VF	3	10	530	3	.14	.133	.126
771-PMEG1030EJ-T/R	PMEG1030EJ	SOD-323	Single	Very Low VF	3	10	530	3	.14	.133	.126

For quantities greater than listed, call for quote.

VARICAP TUNING DIODES

MOUSER STOCK NO.	NXP Part No.	Package	C _d (pF)		C _{d1} /C _{d2}	I _R (Max.) (nA)	Diode Series Resistance (Typ.)	Diode Capacitance Matching (Max.)	Price Each		
			Min.	Max.					1	25	100
771-BB189115	BB189,115	SOD-523	1.89	2.18	6.3	10	0.65Ω	1.8%	.07	.066	.062

For quantities greater than listed, call for quote.