

POMONA Test Clips and Enclosures

Pomona TEST LEAD HOLDERS AND PATCH CORDS KITS

For quantities greater than listed, call for quote.

MOUSER STOCK NO.		Fig.	Description	Max. Cable Dia. (in.)	Price Each		
Mfr.	Mfr. Part No.				1	25	50
565—1508		A	Test lead holder, orange	0.210	13.00	12.48	11.56
565—2708		A	Test lead holder, blue	0.450	13.00	12.42	11.56
565—4408		A	Test lead holder, black	0.320	10.75	10.32	9.56
565—5523		B	Patch cord Kit: 10pcs, 1 ea. Standard color.	-	41.05	39.00	37.04

Pomona GRABBERS AND TEST CLIPS

Replace blank with 0 for Black, 2 for Red. For quantities greater than listed, call for quote.

MOUSER STOCK NO.		Fig.	Description	Max. Cable Dia. (in.)	Price Each		
Mfr.	Mfr. Part No.				1	25	50
565—3925-		C	Do-it-yourself Minigrabber test clip .09Ga	0.09	1.79	1.71	1.58
565—4555-		C	Do-it-yourself Minigrabber test clip .144Ga	0.14	2.17	2.08	1.93
565—4233-		D	Do-it-yourself Micrograbber test clip	0.10	2.16	2.07	1.92
565—5243-		E	Do-it-yourself SMD Grabber test clip	0.05	2.42	2.32	2.15
565—4723-		F	Minigrabber test clip with banana Jack	0.15	5.70	5.47	5.07

Pomona TEST CLIPS

Replace blank with 0 for Black, 2 for Red. For quantities greater than listed, call for quote.

MOUSER STOCK NO.		Fig.	Description	Max. Cable Dia. (in.)	Price Each		
Mfr.	Mfr. Part No.				1	25	50
565—5788-		G	Miniature alligator to 2mm banana jack	0.24	2.25	2.16	2.00
565—6041B		G	XL pair (red/black) alligator clip to 4mm banana jack	0.80	11.34	10.77	10.23
565—2240-		H	Alligator test clip to banana jack, with insulator	0.30	.79	.75	.70

Pomona MICRO SMD GRABBER TEST CLIPS

Replace blank with 0 for Black, 2 for Red. For quantities greater than listed, call for quote.

MOUSER STOCK NO.		Fig.	Description	Max. Cable Dia. (in.)	Price Each		
Mfr.	Mfr. Part No.				1	25	50
565—6490-		I	Micro SMD Grabber Test Clip for 0.05 to 0.02in.	-	30.50	29.28	27.13
565—4771-36-		J	Order to attach SMD Grabber Test Clip to DMM.	-	7.30	7.00	6.49

Pomona TELECOM PRODUCTS (BANTAM PLUGS)

For quantities greater than listed, call for quote.

MOUSER STOCK NO.		Fig.	Description	Length (in.)	Price Each		
Mfr.	Mfr. Part No.				1	25	50
565—4279-12		K	Bantam plug patch cable	12	31.50	30.24	28.02
565—4279-24		K	Bantam plug patch cable	24	31.50	30.24	28.02
565—4279-36		K	Bantam plug patch cable	36	31.50	30.24	28.02
565—4279-48		K	Bantam plug patch cable	48	33.50	32.16	29.80
565—4279-60		K	Bantam plug patch cable	60	33.50	32.16	29.80
565—5026-36		L	Bantam plug to 2 alligator clips patch cable	36	37.00	35.52	32.91
565—5026-60		L	Bantam plug to 2 alligator clips patch cable	60	38.50	36.96	34.24
565—4281-60		M	Bantam plug to double banana plug, balanced line	60	50.00	48.00	44.48

Pomona BOXES AND ENCLOSURES

Miniature Size Die Cast Aluminum Boxes (1.5" x 1.13" x .88")

For quantities greater than listed, call for quote.

MOUSER STOCK NO.		Fig.	Description	Price Each		
Mfr.	Mfr. Part No.			1	25	50
565—3752		N	Blue Bake Enamel Finish BNC (FML) to BNC(Male)	30.07	27.79	27.20
565—3753		N	Blue Bake Enamel Finish	8.38	7.87	7.64
565—3754		N	Unfinished	5.96	5.68	5.40
565—4742		-	Replacement Cover	4.16	3.98	3.76
565—4864		-	Cover Screws, 100/Package	18.85	17.99	17.00

'A' Size Die Cast Aluminum Boxes (2.25" x 1.13" x .88")

For quantities greater than listed, call for quote.

MOUSER STOCK NO.		Fig.	Description	Price Each		
Mfr.	Mfr. Part No.			1	25	50
565—2400		O	Unfinished	7.47	7.11	6.75
565—2397		O	Blue Bake Enamel Finish	8.99	8.47	8.21
565—2390		O	Blue Bake Enamel Finish BNC (FML) to BNC(FML)	28.00	25.87	25.32
565—2391		O	Blue Bake Enamel Finish BNC (Male) to BNC(FML)	30.46	28.71	27.79
565—4245		-	Replacement Cover	4.16	3.98	3.76
565—3728		-	Flange Mounting Cover	10.47	9.15	8.89
565—4864		-	Cover Screws, 100/Package	18.85	17.99	17.00

'B' Size Die Cast Aluminum Boxes (2.25" x 1.38" x 1.13")

For quantities greater than listed, call for quote.

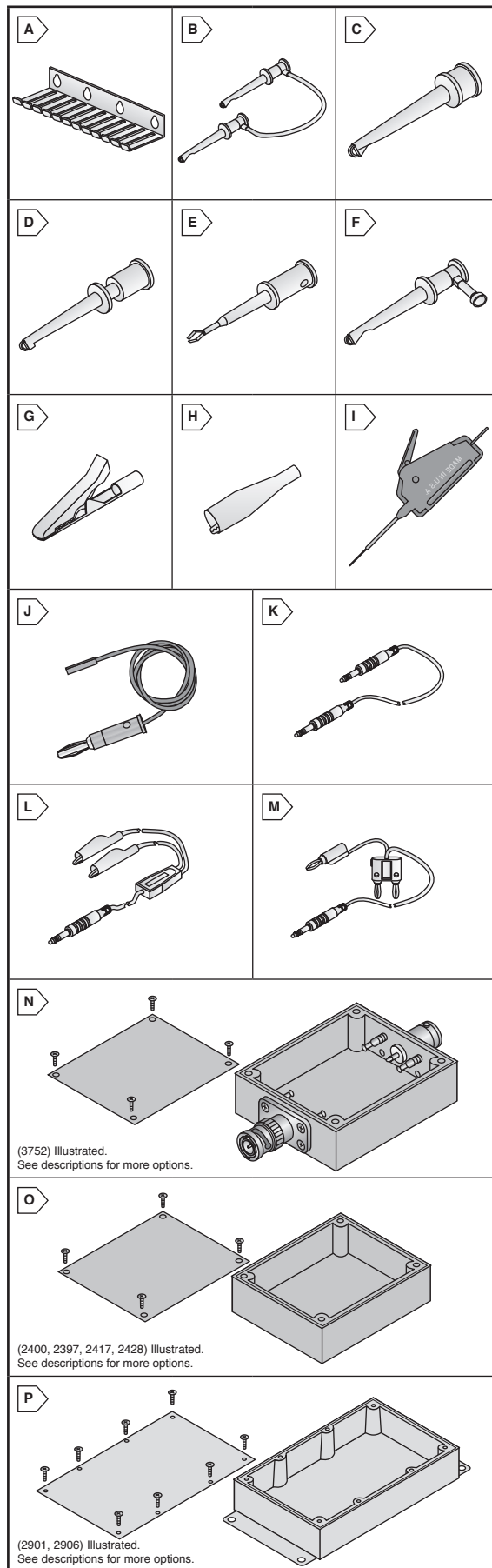
MOUSER STOCK NO.		Fig.	Description	Price Each		
Mfr.	Mfr. Part No.			1	25	50
565—2417		O	Blue Bake Enamel Finish	9.21	8.80	8.19
565—2428		O	Unfinished	8.06	7.47	7.30
565—3230		O	Blue Bake Enamel Finish BNC (FML) to BNC(FML)	28.00	26.88	24.90
565—4246		-	Replacement Cover	3.73	3.55	3.38
565—3719		-	Flange Mounting Cover	5.53	5.27	5.01
565—4864		-	Cover Screws, 100/Package	18.85	17.99	17.00

'C' Size Die Cast Aluminum Boxes With Cover (4.25" x 2.64" x 1.71")

565—2901		P	Blue Bake Enamel Finish	22.19	20.91	20.25
565—2906		P	Unfinished	17.67	16.30	15.46
565—2902		P	Blue Bake Enamel Finish BNC (FML) to BNC(FML)	44.00	42.03	39.12
565—4248		-	Replacement Cover	6.59	6.27	5.96
565—2352		-	Connector Screws with Solder Turret for all Boxes	63.17	61.22	59.27

'D' Size Die Cast Aluminum Boxes With Cover (3.00" x 2.63" x 1.65")

565—3606		O	Shielded Box, Unfinished with Cover	15.38	14.50	14.02
----------	--	---	-------------------------------------	-------	-------	-------



(3752) Illustrated. See descriptions for more options.

(2400, 2397, 2417, 2428) Illustrated. See descriptions for more options.

(2901, 2906) Illustrated. See descriptions for more options.