

Development Tools and Kits



This product is RoHS compliant.

code_red RED PROBE+

Red Probe+ is a USB High Speed debug probe specially designed for use with ARM-based Microcontrollers. Red Probe+ is the new, improved and faster direct replacement for Red Probe, with complete integration with Red Suite. Red Probe+ allows high speed download to RAM and direct programming of on-chip Flash. When used with Cortex-M3 targets, built-in support for SWV allows full support for data trace, instruction and exception profiling and application sourced diagnostics. Together with Red Suite, Red Probe+ provides a complete development and debug environment for ARM-based microcontrollers.

- Features:**
- Fast all round debug including stepping
 - JTAG/SWD clock up to 30MHz
 - Wide target voltage range: 1.5V - 3.5V
 - Switchable protocol support: ARM JTAG SWD, and SWV
 - Programmable SWV runtime trace capture
 - Hardware and Software Breakpoints
 - Up to 5M Bytes/s download to RAM
 - Up to 40K Bytes/s flash programming



PRODUCT NEW

For quantities greater than listed, call for quote.

MOUSER STOCK NO.	Code Red Technologies Part No.	Description	Price Each
898-RP-PLUS	RP-PLUS	Red Probe+ High Speed Debug Probe	150.00
898-RPPLUS-A10	RPPLUS-A10	JTAG Debugger REDPROBE+ HIGH SPEED DEBUG PROBE WITH A10	170.00

code_red DEVELOPMENT BOARD

The RDB1768V2 Development board features a NXP LPC1768, 10/100Mbps Ethernet, Host/Device USB, 16-bit stereo audio, serial port, color LCD and pads for all I/O pins including GPIO and CAN, making it ideal for evaluating all of the features of the LPC1700.



For quantities greater than listed, call for quote.

MOUSER STOCK NO.	Code Red Technologies Part No.	Description	Price Each
898-RDB1768V2	RDB1768V2	RDB1768V2 Development Board with On Board Debug	280.00

code_red RED SUITE SOFTWARE

Red Suite is a highly integrated software development environment for ARM-based Microcontrollers, which includes all the tools necessary to develop high quality software solutions. The Red Suite IDE is based on the latest version of Eclipse with many ease-of-use and Micro-controller specific enhancements.

- Features:**
- Eclipse-based IDE
 - Device-specific support for more than 200 microcontrollers from NXP and Luminary Micro
 - Peripherals views of all supported microcontrollers
 - Full support for both JTAG and low-pin count SWD debugging via Red Probe and LPC-Link
 - Includes 1-year of email-based support with each purchased copy of the tools
 - Fully functional 90-day evaluation

- Available for Windows XP and Windows Vista, Windows 7, 32-bit and 64-bit

NEW! TECHNOLOGY

For quantities greater than listed, call for quote.

MOUSER STOCK NO.	Code Red Technologies Part No.	Description	Price Each
898-RSNXP256-ENV	RSNXP256-ENV	Red Suite License 256K NXP Edition	259.00
898-RSNXP512-ENV	RSNXP512-ENV	Red Suite License 512K NXP Edition	512.00
898-RSRDB	RSRDB	Red Suite License with RDB1768V2 Development Kit	1200.00
898-RSPK-PLUS	RSPK-PLUS	Red Suite Licence with Red Probe+	1100.00

code_red RED PROBE/RED PROBE+ 20-10 PIN ADAPTER

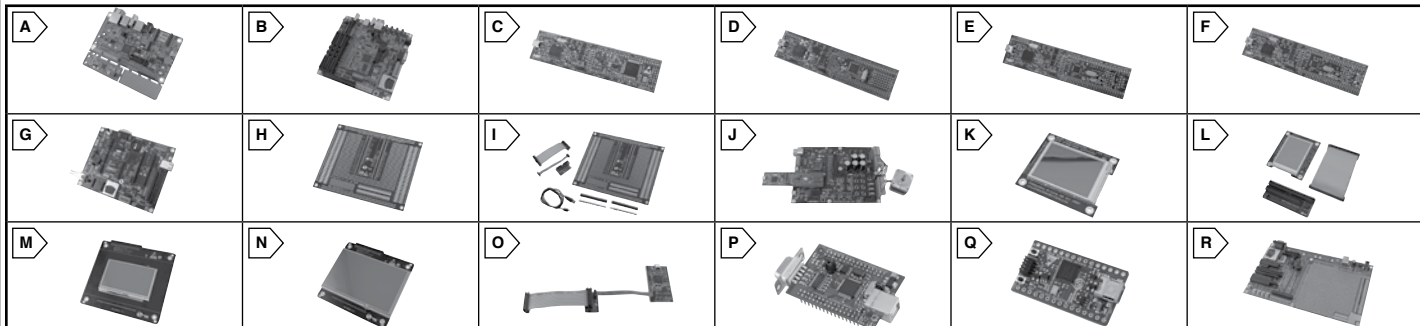
Adapter for converting 20-pin 0.1" pitch to 10-pin 0.05" pitch. Includes 10 and 20 pin cables. For use with Red Probe, Red Probe+ and LPC-Link.



PRODUCT NEW

For quantities greater than listed, call for quote.

MOUSER STOCK NO.	Code Red Technologies Part No.	Description	Price Each
898-A10	A10	Processor Accessories 10 PIN TO 20 PIN JTAG Adapter	27.00



Embedded Artists ANDROID OPEN ACCESSORY APPLICATION (AOAA) KIT

NEW! TECHNOLOGY

For quantities greater than listed, call for quote.

MOUSER STOCK NO.	Embedded Artists Part No.	Fig.	Processor	Program Flash	Data Memory	Interfaces	Connectors	Clock Crystal	Price Each
924-EA-APP-001	EA-APP-001	A	"LPC1769, LPC11C24"	512 kb	64 kb	USB, Ethernet, CAN, Jennic RF, Digi™ Xbee RF, UART/I2C/SPI/GPIO	2x5 pos, 50 mil/1.27 mm pitch	12.000 MHz	79.00

Embedded Artists ARM DEVELOPMENT KITS

- Ethernet: 10/100
- Accelerometer: 3-axis

For quantities greater than listed, call for quote.

MOUSER STOCK NO.	Embedded Artists Part No.	Fig.	Description	Input Voltage (V)	Price Each
924-EA-OEM-509	EA-OEM-509	B	LPC1788-32 Developers Kit - includes 1 LPC1788 OEM Board, 1 OEM Base Board, USB Cable, Headset with mic	3.3V	249.00

Embedded Artists LPCXPRESSO DEVELOPMENT KITS

- Ethernet: 10/100

NEW! TECHNOLOGY

For quantities greater than listed, call for quote.

MOUSER STOCK NO.	Embedded Artists Part No.	Fig.	Description	Flash	Data Memory	Interfaces	Connectors	ADC/DAC	Input Voltage (V)	Dim: mm	Price Each
924-EA-XPR-003	EA-XPR-003	C	LPC1769 LPCXpresso Board	512kB	64kB	USB, 2xCAN, 4xUART, 3xI2C, 2xSSP, 1xI2S	USB, 2x27 pin rows	12-bit ADC, 1 10-bit DAC output	3.3	35 x 140	31.87
924-EA-XPR-005	EA-XPR-005	D	LPC1227 LPCXpresso Board	128kB	8kB	SSP, I2C, UART	USB, 2x27 pin rows	10-bit ADC	3.15-3.3	35 x 140	29.95
924-EA-XPR-006	EA-XPR-006	E	LPC11C24 LPCXpresso Board	32kB	8kB	USB, CAN, I2C, UART	USB, 2x27 pin rows	10-bit ADC	3.15-3.3	35 x 140	29.95
924-EA-XPR-007	EA-XPR-007	F	LPC11U14 LPCXpresso Board	32kB	6kB	USB, USART, I2C, SSP	USB, 2x27 pin rows	10-bit ADC	3.15-3.3	35 x 140	29.95
Board Kits											
924-EA-XPR-021	EA-XPR-021	G	LPCXpresso base board, development board for LPCXpresso boards with assorted Digital and Analog I/Os needed for development							150 x 180	125.95
924-EA-XPR-020	EA-XPR-020	H	LPCXpresso Prototype Board with 100mm, 50mm pitch holes and area for 50mm pitch SOIC, and 0.65mm pitch SSOP components							148 x 120	16.98
924-EA-XPR-110	EA-XPR-110	I	LPCXpresso Value Pack, includes the LPCXpresso prototype board, a mini-B to A USB cable, and a 10 pin to 20 pin JTAG adapter							148 x 120	28.30
924-EA-XPR-120	EA-XPR-120	J	LPCXpresso Motor Control Kit includes Motor Control Board, LPC1114 LPCXpresso board, BLDC motor with hall sensors, and a 24V power supply (60W)							200 x 150	444.94
Accessories											
924-EA-LCD-002	EA-LCD-002	K	3.2" QVGA LCD Color Display						2.5-3.3	93 x 83	111.79
924-EA-LCD-105	EA-LCD-105	L	3.2" QVGA display kit, includes IDC ribbon cable and Display adapter						2.5-3.3	93 x 83	129.00
924-EA-LCD-004	EA-LCD-004	M	4.3" 480 x 272 LCD Color Display						3.3-5	95.04x58.56	119.00
924-EA-LCD-006	EA-LCD-006	N	7" 800 x 480 LCD Color Display						3.3-5	165 x 150	159.00
924-EA-ACC-040	EA-ACC-040	O	10-pin to 20-pin JTAG adapter						-	-	20.95

Embedded Artists QUICKSTART BOARDS

For quantities greater than listed, call for quote.

MOUSER STOCK NO.	Embedded Artists Part No.	Fig.	Description	Program Flash	Data Memory	Interfaces	Connectors	Power to Board	Power Output	Dim: mm	Price Each
924-EA-QSB-010	EA-QSB-010	P	LPC2148 USB	512kB	32+8kB	USB, RS-232, I2C	Dual 2x16 I/O headers, DSUB-9, USB	5V	3.3V	59 x 39.5	69.34
924-EA-QSB-012	EA-QSB-012	Q	LPC1343 Mini-USB	32kB	8kB	USB, I2C, JTAG	2x15 I/O Headers	5V	3.3V	21x40	27.95
924-EA-QSB-102	EA-QSB-102	-	LPC2106 RS232 w/ prototype board	128kB	64kB	RS232, I2C	2x20 I/O Headers, DSUB-9	5V	3.3V	27.9 x 65.3	83.49
924-EA-QSB-103	EA-QSB-103	-	LPC2129 CAN w/ prototype board	256kB	16kB	Dual CAN, RS-232, I2C	Dual 2x16 I/O headers, DSUB-9, USB	5V	3.3V	55 x 58	97.64
Board Kits											
924-EA-QSB-100	EA-QSB-100	R	Quickstart Prototype Board for LPC2106 RS232, LPC2129 CAN, and LPC2148 USB QuickStart Boards with headers for each different board type							196 x 125	55.19