

# SIMPSON Digital Panel Meters



## MINI M135 AND M145 INDICATORS

**Features:**

- 3/64 DIN Indicator
- Minimum depth indicator less than 0.7" (17mm) of space required behind the panel
- 3 1/2 or 4 1/2 digit LCD display with optional negative image red backlight
- Snaps right into panel - no mounting hardware required
- 12 pin mating connector with 6" lead wires included for easy installation



MOUSER STOCK NO.	Simpson Part No.	Input	Display	Price Each
<b>DC Voltage Indicators</b>				
529-M13500110	M135-0-0-11-0	200mV	Non-Backlit	73.27
529-M13500120	M135-0-0-12-0	2V	Non-Backlit	72.56
529-M13510121	M135-1-0-12-1	2V	Backlit	98.73
529-M13500130	M135-0-0-13-0	20V	Non-Backlit	73.27
529-M13510131	M135-1-0-13-1	20V	Backlit	93.99
529-M13500140	M135-0-0-14-0	200V	Non-Backlit	73.27
529-M14500110	M145-0-0-11-0	200mV	Non-Backlit	91.47
529-M14510111	M145-1-0-11-1	200mV	Backlit	114.60
529-M14500120	M145-0-0-12-0	2V	Non-Backlit	93.28
529-M14510121	M145-1-0-12-1	2V	Backlit	119.11

MOUSER STOCK NO.	Simpson Part No.	Input	Display	Price Each
<b>DC Voltage Indicators (Cont.)</b>				
529-M14500130	M145-0-0-13-0	20V	Non-Backlit	95.11
529-M14510141	M145-1-0-14-1	200V	Backlit	119.11
<b>DC Current Indicators</b>				
529-M13500230	M135-0-0-23-0	20mA	Non-Backlit	72.56
529-M13510231	M135-1-0-23-1	20mA	Backlit	95.02
529-M13500240	M135-0-0-24-0	200mA	Non-Backlit	72.59
529-M13510241	M135-1-0-24-1	200mA	Backlit	98.74
529-M14500230	M145-0-0-23-0	20mA	Non-Backlit	95.11
529-M14510231	M145-1-0-23-1	20mA	Backlit	114.60
529-M14510241	M145-1-0-24-1	200mA	Backlit	114.60

## MINI-MAX SERIES 3/64 DIN INDICATORS

**Features:**

- 3/64 DIN cutout (22mm x 68mm)
- Unique mounting bracket allows stacking of multiple meters
- 3-1/2 (M235) or 4-1/2 (M245) digit LCD display with optional negative red backlighting
- Screw terminal connectors for easy installation



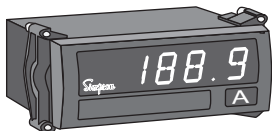
MOUSER STOCK NO.	Simpson Part No.	Input	Display	Price Each
<b>DC Voltage Indicators</b>				
529-M23500110	M235-0-0-11-0	200mV	Non-Backlit	110.95
529-M23510110	M235-1-0-11-0	200mV	Backlit	136.59
529-M23500130	M235-0-0-13-0	20V	Non-Backlit	104.15
529-M23510130	M235-1-0-13-0	20V	Backlit	147.93
529-M24500130	M245-0-0-13-0	20V	Non-Backlit	133.59
529-M24510130	M245-1-0-13-0	20V	Backlit	168.46
529-M24500140	M245-0-0-14-0	200V	Non-Backlit	144.47
529-M24510140	M245-1-0-14-0	200V	Backlit	162.06
<b>DC Current Indicators</b>				
529-M23500240	M235-0-0-24-0	200mA	Non-Backlit	108.87
529-M23510240	M235-1-0-24-0	200mA	Backlit	118.90
529-M23500250	M235-0-0-25-0	2A	Non-Backlit	108.85
529-M23510250	M235-1-0-25-0	2A	Backlit	132.41
<b>AC TRMS Voltage Indicators</b>				
529-M23500310	M235-0-0-31-0	200mV	Non-Backlit	148.27
529-M23510320	M235-1-0-32-0	2V	Backlit	177.44

MOUSER STOCK NO.	Simpson Part No.	Input	Display	Price Each
<b>AC TRMS Voltage Indicators (Cont.)</b>				
529-M23510330	M235-1-0-33-0	20V	Backlit	174.00
529-M23500340	M235-0-0-34-0	200V	Non-Backlit	154.07
529-M23510340	M235-1-0-34-0	200V	Backlit	177.44
529-M24510330	M245-1-0-33-0	20V	Backlit	206.76
529-M24500340	M245-0-0-34-0	200V	Non-Backlit	179.74
529-M24510340	M245-1-0-34-0	200V	Backlit	206.76
<b>AC TRMS Current Indicators</b>				
529-M24510460	M245-1-0-46-0	5A	Backlit	202.88
<b>DC Process Indicators</b>				
529-M23500710	M235-0-0-71-0	4-20mA	Non-Backlit	125.87
529-M23510710	M235-1-0-71-0	4-20mA	Backlit	154.30
529-M24500710	M245-0-0-71-0	4-20mA	Non-Backlit	156.49
529-M24510710	M245-1-0-71-0	4-20mA	Backlit	183.22
<b>Frequency Indicators</b>				
529-M23500810	M235-0-0-81-0	20-199.9Hz	Non-Backlit	110.33
529-M23510810	M235-1-0-81-0	20-199.9Hz	Backlit	142.29

## FALCON F35 AND F45 INDICATORS

**Features:**

- 1/8 DIN Indicators
- 3-1/2" or 4-1/2" digit bright red LED display
- Front panel pops off for easy decimal point setting and display scaling
- Only 3.12" (79mm) required behind panel
- Screw terminal connectors for easy installation
- Optional excitation output



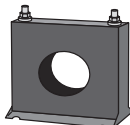
MOUSER STOCK NO.	Simpson Part No.	Input	Display	Price Each
<b>AC Current Indicators</b>				
529-F351450	F35-1-45-0	2A	None	166.73
529-F351460	F35-1-46-0	5A	None	169.99
529-F451460	F45-1-46-0	5A	None	278.57
<b>AC TRMS Current Indicators</b>				
529-F351650	F35-1-65-0	2A	None	206.71
529-F351660	F35-1-66-0	5A	None	200.72
<b>DC Process Indicators</b>				
529-F351710	F35-1-71-0	4-20mA	None	168.42
529-F351720	F35-1-72-0	1-5V	None	162.00
529-F451710	F45-1-71-0	4-20mA	None	228.05
529-F451711	F45-1-71-1	4-20mA	12VDC	288.65
529-F451712	F45-1-71-2	4-20mA	24VDC	288.65
529-F451720	F45-1-72-0	1-5A	None	228.05
<b>Temperature Indicators</b>				
529-F451800	F45-1-80-0	J TC	None	206.50
529-F451810	F45-1-81-0	K TC	None	206.50
<b>DC Voltage Indicators</b>				
529-F351110	F35-1-11-0	200mV	None	121.28
529-F351130	F35-1-13-0	20V	None	121.28
529-F351140	F35-1-14-0	200V	None	116.69

MOUSER STOCK NO.	Simpson Part No.	Input	Display	Price Each
<b>DC Voltage Indicators (Cont.)</b>				
529-F351140	F35-1-14-0	200V	None	116.69
529-F451110	F45-1-11-0	200mV	None	232.57
529-F451140	F45-1-14-0	200V	None	232.57
<b>DC Current Indicators</b>				
529-F351220	F35-1-22-0	2mA	None	126.45
529-F351230	F35-1-23-0	20mA	None	126.45
529-F351240	F35-1-24-0	200mA	None	126.45
529-F351250	F35-1-25-0	2A	None	131.47
529-F451230	F45-1-23-0	20mA	None	232.57
529-F451240	F45-1-24-0	200mA	None	228.05
529-F451250	F45-1-25-0	2A	None	227.50
<b>AC Voltage Indicators</b>				
529-F351310	F35-1-31-0	200mV	None	166.80
529-F351330	F35-1-33-0	20V	None	166.80
529-F451310	F45-1-31-0	200mV	None	268.36
529-F451330	F45-1-33-0	20V	None	268.36
529-F451340	F45-1-34-0	200V	None	268.36
<b>AC TRMS Voltage Indicators</b>				
529-F351540	F35-1-54-0	200V	None	193.47
529-F451540	F45-1-54-0	200V	None	277.50

## AC TO DC CURRENT TRANSDUCER

**Features:**

- Reduces high AC current signal to 4-20mA DC signal
- Use with Simpson digital process meters
- 24VDC power required



MOUSER STOCK NO.	Simpson Part No.	Description	Price Each
529-37002	37002	100A/4-20mA	320.28

## TERMINAL TYPE AC CURRENT TRANSFORMERS

**Features:**

- Use with Simpson 5AAC digital indicators requiring external current transformers
- Reduce high AC current to 5AAC output to meter
- Screw terminals for easy connection

MOUSER STOCK NO.	Simpson Part No.	Description	Price Each
529-37020	37020	100/5 Amp	36.16
529-37021	37021	150/5 Amp	37.18
529-37023	37023	300/5 Amp	32.77