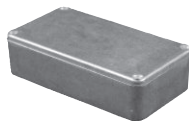


HAMMOND Diecast Aluminum Watertight Enclosures



HAMMOND WATERTIGHT ENCLOSURES

- Lap joint construction with a bead of silicon rubber around the perimeter provides protection against access of dust and water
- Four (or 6 in 1590D, 1590DD, 1590E, 8 in 1590F) 6-32 x 1/2" stainless steel machine screws secure lid into tapped holes
- Designed to meet IP65



PRODUCT **NEW**



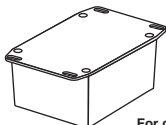
RoHS Compliant

For quantities greater than listed, call for quote.

MOUSER STOCK NO.		Dimensions: in.			Price Each			
Mfr.	Mfr. Part No.	H	W	D	1	5	10	25
Color: Unfinished								
546	1590WLB	1.99	1.99	1.06	8.30	6.93	6.39	5.94
546	1590WH	2.07	1.50	1.06	7.28	6.08	5.61	5.21
546	1590WA	3.64	1.52	1.06	8.87	7.64	7.04	6.53
546	1590WS	4.35	3.21	1.57	12.28	10.25	9.46	8.78
546	1590WB	4.39	2.34	1.06	9.63	8.66	7.99	7.41
546	1590WBB	4.67	3.68	1.18	12.18	10.97	10.11	9.38
546	1590WU	4.70	4.70	2.17	18.27	16.32	15.23	14.05
546	1590WC	4.72	3.70	2.07	13.46	12.12	11.18	10.37
546	1590WT	4.74	3.13	2.17	12.63	11.36	10.48	9.72
546	1590WCE	4.74	3.95	2.531	11.54	10.99	10.49	10.03
546	1590WN1	4.77	2.60	1.39	13.55	11.31	10.43	9.69
546	1590WK	4.92	4.92	2.95	23.52	20.25	18.68	17.33
546	1590WJ	5.71	3.74	1.77	14.14	12.73	11.74	10.89
546	1590WP1	6.01	3.24	1.81	16.54	14.78	13.78	12.73
546	1590WDD	7.40	4.70	1.30	19.40	16.20	14.94	13.87
546	1590WD	7.38	4.70	2.05	21.79	19.61	18.08	16.77
546	1590WE	7.38	4.70	3.07	23.20	20.88	19.26	17.87
546	1590WF	7.38	7.38	2.48	31.19	27.62	25.74	23.99
546	1590WDE	7.88	4.73	2.531	18.66	17.77	16.96	16.23
546	1590WEE	7.88	4.73	3.327	21.81	20.77	19.82	18.96
Color: Black								
546	1590WLBK	1.99	1.99	1.06	10.95	9.79	9.12	8.43
546	1590WHBK	2.07	1.50	1.06	9.93	8.88	8.27	7.65
546	1590WABK	3.64	1.52	1.06	11.08	9.25	8.53	7.92
546	1590WSBK	3.94	1.97	0.83	10.26	8.57	7.90	7.34
546	1590WGBK	4.35	3.21	1.57	15.59	13.92	12.98	11.99
546	1590WBBK	4.39	2.34	1.06	12.57	10.49	9.68	8.98
546	1590WBBBK	4.67	3.68	1.18	15.46	12.91	11.91	11.06
546	1590WUBK	4.70	4.70	2.17	21.64	18.07	16.67	15.48
546	1590WYBK	4.70	4.70	3.54	29.18	24.37	22.47	20.86
546	1590WCBK	4.72	3.70	2.07	17.18	15.34	14.32	13.22
546	1590WTBK	4.74	3.13	2.17	16.07	13.41	12.37	11.48
546	1590WCEBK	4.74	3.95	2.531	13.07	12.45	11.88	11.36
546	1590WNBK	4.77	2.60	1.39	17.65	14.73	13.59	12.62
546	1590WP1BK	6.01	3.24	1.81	19.32	17.25	16.09	14.87
546	1590WDBK	7.40	4.70	1.30	22.94	19.15	17.66	16.40
546	1590WDBK	7.38	4.70	2.05	25.82	23.06	21.53	19.87
546	1590WEBK	7.38	4.70	3.07	27.50	24.75	22.83	21.16
546	1590WFBK	7.38	7.38	2.48	31.39	29.54	27.69	25.85
546	1590WDEBK	7.88	4.73	2.531	20.17	19.21	18.34	17.54
546	1590WEEBK	7.88	4.73	3.327	23.32	22.21	21.30	20.28

HAMMOND WATERTIGHT FLANGED LID ENCLOSURES

Flanged lid allows for easy mounting to walls or shelves, and provides added security as the lid screws are hidden against the wall or shelf.



RoHS Compliant

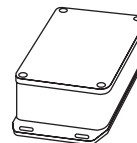
- Designed to meet IP65

For quantities greater than listed, call for quote.

MOUSER STOCK NO.		Dimensions: in.			Price Each			
Mfr.	Mfr. Part No.	H	W	D	1	5	10	25
Color: Unfinished								
546	1590WLBFL	1.99	1.99	1.06	9.05	7.55	6.96	6.47
546	1590WAF	3.64	1.52	1.06	9.64	8.30	7.60	7.10
546	1590WSFL	4.35	3.21	1.57	13.38	11.17	10.30	9.57
546	1590WBFL	4.39	2.34	1.06	10.47	8.74	8.06	7.48
546	1590WBBFL	4.67	3.68	1.18	13.28	11.96	11.03	10.23
546	1590WUFL	4.70	4.70	2.17	20.88	17.99	16.59	15.39
546	1590WVFL	4.70	4.70	3.54	26.86	22.43	20.69	19.21
546	1590WCFL	4.72	3.70	2.07	15.37	13.23	12.21	11.32
546	1590WTF	4.74	3.13	2.17	13.78	11.50	10.61	9.85
546	1590WN1FL	4.77	2.60	1.39	13.75	11.48	10.59	9.83
546	1590WP1FL	6.01	3.24	1.81	18.04	15.07	13.89	12.90
546	1590WDFL	7.38	4.70	2.05	23.81	21.26	19.88	18.33
546	1590WEFL	7.38	4.70	3.07	26.44	22.77	21.00	18.09
546	1590WFFL	7.38	7.38	2.48	34.08	28.46	26.25	24.37
Color: Black								
546	1590WLBFLBK	1.99	1.99	1.06	12.22	10.92	10.18	9.40
546	1590WAF-BK	3.64	1.52	1.06	12.44	10.39	9.58	8.90
546	1590WGFLBK	3.94	1.97	0.83	11.28	10.08	9.40	8.68
546	1590WSFLBK	4.35	3.21	1.57	18.06	16.14	15.05	13.91
546	1590WBFLBK	4.39	2.34	1.06	14.12	11.79	10.87	10.09
546	1590WBBFLBK	4.67	3.68	1.18	19.74	14.96	13.80	12.81
546	1590WUFLBK	4.70	4.70	2.17	26.94	22.50	20.75	19.27
546	1590WVFLBK	4.70	4.70	3.54	36.26	30.28	27.92	25.92
546	1590WCFLBK	4.72	3.70	2.07	19.85	16.57	15.28	14.19
546	1590WTFBK	4.74	3.13	2.17	18.60	15.54	14.33	13.30
546	1590WN1FLBK	4.77	2.60	1.39	17.82	14.26	13.37	12.48
546	1590WP1FLBK	6.01	3.24	1.81	20.69	19.48	18.26	17.04
546	1590WDFBK	7.40	4.70	1.30	28.56	23.85	21.99	20.42
546	1590WDFBK	7.38	4.70	2.05	32.12	26.82	24.73	22.96
546	1590WFFBK	7.38	7.38	2.48	46.00	38.41	35.42	32.89

HAMMOND WATERTIGHT FLANGED ENCLOSURES

Bottom flange is an aluminum plate, welded onto the base of the enclosure.



- Designed to meet IP65



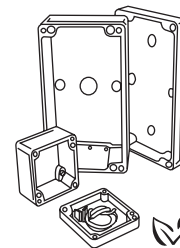
RoHS Compliant

For quantities greater than listed, call for quote.

MOUSER STOCK NO.		Dimensions: in.			Price Each			
Mfr.	Mfr. Part No.	H	W	D	1	5	10	25
Color: Unfinished								
546	1590WLBFB	1.99	1.99	1.06	12.30	10.28	9.48	8.80
546	1590WGF	3.94	1.97	0.83	11.82	9.87	9.10	8.45
546	1590WSF	4.35	3.21	1.57	17.80	14.51	13.62	12.73
546	1590WBF	4.39	2.34	1.06	13.82	11.54	10.64	9.88
546	1590WBBF	4.67	3.68	1.18	17.64	14.73	13.59	12.62
546	1590WUF	4.70	4.70	2.17	26.68	22.28	20.55	19.08
546	1590WVF	4.70	4.70	3.54	31.34	29.53	27.73	25.92
546	1590WCF	4.72	3.70	2.07	17.00	16.02	15.04	14.06
546	1590WTF	4.74	3.13	2.17	15.73	14.81	13.89	12.98
546	1590WKF	4.92	4.92	2.95	28.93	27.24	25.56	23.87
546	1590WJF	5.71	3.74	1.77	21.21	17.71	16.33	15.16
546	1590WPF	6.01	3.24	1.81	23.46	21.30	19.85	18.53
546	1590WDF	7.38	4.70	2.05	31.21	26.03	24.44	22.84
546	1590WDFB	7.38	4.70	3.07	33.98	30.35	28.30	26.15
546	1590WFFB	7.38	7.38	2.48	39.60	37.31	35.03	32.75
Color: Black								
546	1590WLBFBK	1.99	1.99	1.06	13.46	12.69	11.90	11.13
546	1590WAFBK	3.64	1.52	1.06	16.03	13.39	12.35	11.46
546	1590WGF	3.94	1.97	0.83	15.36	12.83	11.83	10.98
546	1590WSFBK	4.35	3.21	1.57	19.75	18.61	17.47	16.32
546	1590WBF	4.39	2.34	1.06	18.23	15.22	14.03	13.03
546	1590WUFBK	4.70	4.70	2.17	31.11	29.53	27.94	26.35
546	1590WVFBK	4.70	4.70	3.54	37.28	35.13	32.98	30.83
546	1590WCFBK	4.72	3.70	2.07	25.18	22.48	20.98	19.37
546	1590WTFBK	4.74	3.13	2.17	20.38	19.20	18.03	16.85
546	1590WN1FBK	4.77	2.60	1.39	24.50	20.46	18.87	17.52
546	1590WDFBK	7.38	4.70	2.05	32.87	30.98	29.08	27.19
546	1590WDFBK	7.38	4.70	3.07	35.15	33.13	31.10	29.08
546	1590WFFBK	7.38	7.38	2.48	60.84	50.80	46.85	43.50

HAMMOND WATERTIGHT, HEAVY DUTY ENCLOSURES

- Two piece "tongue & groove" construction with a one piece silicon rubber gasket provides protection against access of dust and water
- Easy to wall mount using "through box - blind hole" construction, outside of gasket protection
- Screws are self capturing using either individual neoprene "O" rings (outside the lid gasket seal) or using screw capturing lid
- Designed to meet IP 65
- Available in gray; contact a Mouser Service Representative for details



RoHS Compliant