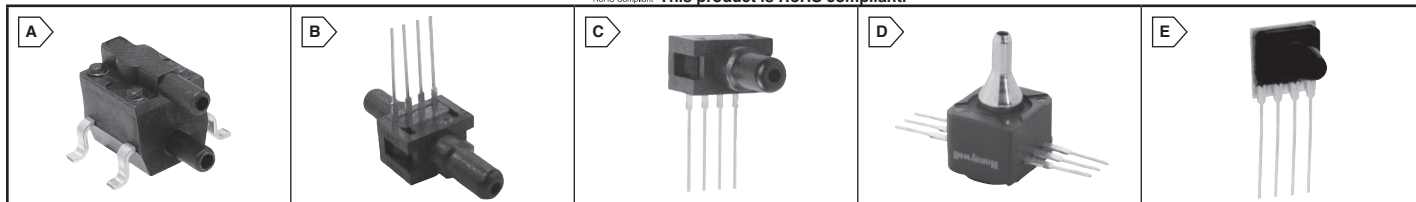


HONEYWELL Pressure Sensors

RoHS Compliant **This product is RoHS compliant.**



PIEZORESISTIVE SILICON SENSORS

Contain sensing elements that consist of four piezoresistors buried in the face of a thin, chemically-etched silicon diaphragm. A pressure change causes the diaphragm to flex, inducing a stress in the diaphragm and the buried resistors. The resistor values change in proportion to the stress applied and produce an electrical output. These sensors are small, low cost and reliable. They feature excellent repeatability, high accuracy and reliability under varying environmental conditions. In addition, they feature highly consistent operating characteristics from one sensor to the next, and interchangeability without recalibration.

Potential Medical Applications:

- CPAP (Continuous Positive Airway Pressure) equipment
- Respirators and ventilators
- Blood glucose monitors

- Oxygen conservers
- Oxygen concentrators
- Nebulizers

Potential Industrial Applications:

- Soft drink dispensing

Potential Environmental Applications:

- Residential fuel cells

For quantities greater than listed, call for quote.

MOUSER STOCK NO.	Honeywell Part No.	Fig.	Pressure Range (psi)	Port Style	Pressure Type	Signal Conditioning	Supply Voltage (max.)	Price Each		
								1	10	50
785-24PC01SMT	24PC01SMT	A	±1.0	Straight	Wet-Wet Diff./Vacuum	Unamplified	12.0 Vdc	26.69	24.27	22.23
785-26PC01SMT	26PC01SMT	A	±1.0	Straight	Wet-Wet Diff./Vacuum	Unamplified	16.0 Vdc	39.54	35.95	32.95
785-26PC05SMT	26PC05SMT	A	±5.0	Straight	Wet-Wet Diff./Vacuum	Unamplified	16.0 Vdc	34.02	31.44	30.07
785-26PC15SMT	26PC15SMT	A	±15.0	Straight	Wet-Wet Diff./Vacuum	Unamplified	16.0 Vdc	41.12	37.40	34.27
785-24PCFA6D	24PCFA6D	B	±1.0	Straight	Wet-Wet Diff./Vacuum	Unamplified	12.0 Vdc	25.28	22.57	20.65
785-24PCBFA6D	24PCBFA6D	B	±5.0	Straight	Wet-Wet Diff./Vacuum	Unamplified	12.0 Vdc	33.96	30.32	27.75
785-24PCCEFA6D	24PCCEFA6D	B	±.5	Straight	Wet-Wet Diff./Vacuum	Unamplified	12.0 Vdc	31.36	28.15	26.50
785-26PCFA6D	26PCFA6D	B	±1.0	Straight	Wet-Wet Diff./Vacuum	Unamplified	16.0 Vdc	43.08	40.85	37.82
785-26PCBFA6D	26PCBFA6D	B	±5.0	Straight	Wet-Wet Diff./Vacuum	Unamplified	16.0 Vdc	28.30	26.09	24.05
785-26PCBFD6G	26PCBFD6G	B	±5.0	Modular	Vacuum	Unamplified	16.0 Vdc	41.72	35.13	32.74
785-26PCCFA6D	26PCCFA6D	B	±15.0	Straight	Wet-Wet Diff./Vacuum	Unamplified	16.0 Vdc	30.07	29.34	26.01
785-26PCDFA6D	26PCDFA6D	B	±30.0	Straight	Wet-Wet Diff./Vacuum	Unamplified	16.0 Vdc	25.91	25.11	24.66
785-24PCFA6G	24PCFA6G	C	±1.0	Straight	Vacuum	Unamplified	12.0 Vdc	25.77	23.01	21.06
785-24PCBFA6G	24PCBFA6G	C	±5.0	Straight	Vacuum	Unamplified	12.0 Vdc	34.31	30.64	28.03
785-24PCCFA6G	24PCCFA6G	C	±15.0	Straight	Vacuum	Unamplified	12.0 Vdc	33.30	29.74	27.21
785-24PCDFA6G	24PCDFA6G	C	±30.0	Straight	Vacuum	Unamplified	12.0 Vdc	25.28	22.57	20.65
785-24PCFFA6G	24PCFFA6G	C	±100.0	Straight	Vacuum	Unamplified	12.0 Vdc	22.28	19.08	18.61
785-24PCGFA6G	24PCGFA6G	C	±250.0	Straight	Vacuum	Unamplified	12.0 Vdc	23.11	20.83	19.72
785-26PCFA6G	26PCFA6G	C	±1.0	Straight	Differential	Unamplified	16.0 Vdc	34.05	32.28	29.25
785-26PCBFA6G	26PCBFA6G	C	±5.0	Straight	Differential	Unamplified	16.0 Vdc	28.87	26.61	25.34
785-26PCCFA6G	26PCCFA6G	C	±15.0	Straight	Vacuum	Unamplified	16.0 Vdc	37.55	35.90	33.91
785-26PCCFB6G	26PCCFB6G	C	±15.0	Barbed	Vacuum	Unamplified	16.0 Vdc	29.09	28.27	26.80
785-26PCDFA6G	26PCDFA6G	C	±30.0	Straight	Vacuum	Unamplified	16.0 Vdc	45.73	43.36	39.29
785-26PCFFA6G	26PCFFA6G	C	±100.0	Straight	Vacuum	Unamplified	16.0 Vdc	34.25	32.02	26.06
785-40PC015G1A	40PC015G1A	D	0 to 15.0	Tube	Gauge	Amplified	0.25 Vdc	48.45	36.10	34.54
785-40PC100G2A	40PC100G2A	D	0 to 100	Tube	Gauge	Amplified	0.25 Vdc	48.45	36.10	34.54
785-40PC150G2A	40PC150G2A	D	0 to 150	Tube	Gauge	Amplified	0.25 Vdc	48.45	36.10	34.54
785-40PC500G2A	40PC500G2A	D	0 to 500	Tube	Gauge	Amplified	0.25 Vdc	112.82	84.09	80.42
785-CPCL04DFC	CPCL04DFC	E	± 4.0 in H2O	Barbed	Differential	Unamplified	16.0 Vdc	34.27	31.20	29.35

Pressure Sensors Honeywell

PRESSURE/FORCE SENSORS

Features:

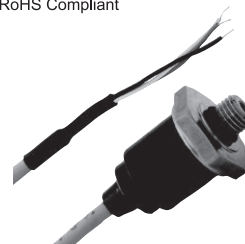
- All-wetted parts
- No internal elastomeric seals
- Stable and creep free
- Reverse voltage and output short circuit protected
- Less than 2ms response time
- Easy customization
- Rated IP65 or better
- Exceeds CE heavy industrial EMC for use in areas of high RFI/EMI
- Amplified and temperature compensated
- Wide choice of connections and terminations
- Calibration for special pressure ranges

Potential Applications:

- Diesel engines
- Refrigeration and HVAC/R
- General industrial and hydraulics
- Off-road vehicles
- Braking systems
- Natural gas vehicles
- Medical



RoHS Compliant



For quantities greater than listed, call for quote.

MOUSER STOCK NO.	Honeywell Part No.	Pressure Range	Pressure Type	Signal Conditioning	Supply Voltage (Vdc)	Price Each		
						1	10	50
785-MLH01KPSB01B	MLH01KPSB01B	0 to 1000	Sealed Gauge	Amplified	9.5 to 30.0	104.86	88.79	81.27
785-MLH03KPSB06A	MLH03KPSB06A	0 to 3000	Sealed Gauge	Amplified	5.0	107.99	91.44	83.70
785-MLH05KPSB01A	MLH05KPSB01A	0 to 5000	Sealed Gauge	Amplified	5.0	107.99	91.44	83.70
785-MLH05KPSB01B	MLH05KPSB01B	0 to 5000	Sealed Gauge	Amplified	9.5 to 30.0	107.99	91.44	83.70
785-MLH100PGL06A	MLH100PGL06A	0 to 100	Gauge	Amplified	5.0	104.86	88.79	81.27
785-MLH100PGM01B	MLH100PGM01B	0 to 100	Gauge	Amplified	9.5 to 30.0	107.99	91.44	83.70
785-MLH150PGB06A	MLH150PGB06A	0 to 150	Gauge	Amplified	5.0	104.86	88.79	81.27
785-MLH150PSB01B	MLH150PSB01B	0 to 150	Sealed Gauge	Amplified	9.5 to 30.0	107.99	91.44	83.70
785-MLH150PSB06A	MLH150PSB06A	0 to 150	Sealed Gauge	Amplified	5.0	104.86	88.79	81.27
785-MLH500PSB01A	MLH500PSB01A	0 to 500	Sealed Gauge	Amplified	5.0	107.99	91.44	83.70

FSS-SMT SERIES FORCE SENSOR

Honeywell's FSS SMT Series force sensors are designed to be one of the most reliable force sensors available as illustrated by 20 million Mean Cycles to Failure (MCTF) rating. This low profile Surface Mount Technology (SMT) sensor allows for automated assembly on printed circuit boards, often helping the customer to reduce assembly costs.

The FSS SMT Series force sensor is designed provide precise and reliable force sensing performance in a compact commercial-grade package. The sensor incorporates Honeywell sensing technology that uses a specialized piezoresistive micro-machined silicon sensing element.

Features:

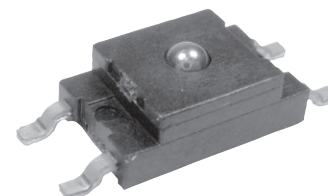
- Surface mount technology allows for automated assembly and may eliminate hand soldering
- RoHS-compliant materials meet Directive 2002/95/EC
- Low deflection (30 microns typical at full scale) help reduce measurement error
- Direct mechanical coupling of the actuating ball to the sense element
- Small size minimizes space on the PCB
- Provides enhanced sensitivity without compromising system integrity
- Electrically ratiometric output accommodates supply voltage variations

Potential Applications:

- Medical infusion pumps
- Ambulatory non-invasive pump pressure
- Occlusion detection
- Kidney dialysis machines
- External pumps
- Load and compression sensing
- Variable tension control
- Wire bonding equipment



RoHS Compliant



For quantities greater than listed, call for quote.

MOUSER STOCK NO.	Honeywell Part No.	Operating Force (max)	Sensitivity (mV/N)	Supply Voltage	Operating Temp	Packaging	Price Each		
							1	10	50
785-FSS1500NGT	FSS1500NGT	14.7 N	10.2 to 14.3	3 to 6V	-40 to 85	Tube	50.00	48.15	47.24