

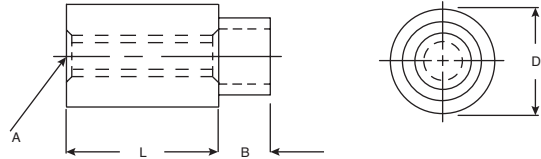
# RAF HARDWARE Standoffs and Tooling

RoHS Compliant This product is RoHS compliant.



## ROUND SWAGE STANDOFF

Round Swage standoffs are primarily used to separate circuit boards, chassis components and other devices from each other. The swaging installation process allows them to provide a permanent fixture.



"L" (in)	SL (B)	Dia. (D)	Thread Size (A)	Aluminum Material - Clear Iridite Finish			Tooling Used		"L" (in)	SL (B)	Dia. (D)	Thread Size (A)	Brass Material - Ductile Nickel		
				MOUSER STOCK NO.	Price Each		Punch	Anvil					MOUSER STOCK NO.	Price Each	
					1	100								1	100
1/8	.105	3/16"	2-56	761-3030-B-256-AL-7	1.32	1.24	P-3	AR-18	1/8	.105	2-56	2-56	761-3030-B-256-B-37	.90	.84
3/16	.105	3/16"	2-56	761-3031-B-256-AL-7	1.33	1.25	P-3	AR-18	3/16	.105	2-56	2-56	761-3031-B-256-B-37	.92	.86
1/4	.105	3/16"	2-56	761-3032-B-256-AL-7	1.33	1.25	P-3	AR-19	1/4	.105	2-56	2-56	761-3032-B-256-B-37	.93	.88
5/16	.105	3/16"	2-56	761-3033-B-256-AL-7	1.56	1.46	P-3	AR-19	5/16	.105	2-56	2-56	761-3033-B-256-B-37	.96	.90
3/8	.105	3/16"	2-56	761-3034-B-256-AL-7	1.56	1.46	P-3	AR-19	3/8	.105	2-56	2-56	761-3034-B-256-B-37	.98	.92
7/16	.105	3/16"	2-56	761-3035-B-256-AL-7	1.57	1.47	P-3	AR-19	7/16	.105	2-56	2-56	761-3035-B-256-B-37	1.00	.94
1/2	.105	3/16"	2-56	761-3036-B-256-AL-7	1.57	1.48	P-3	AR-20	1/2	.105	2-56	2-56	761-3036-B-256-B-37	1.02	.95
1/8	.105	1/4"	4-40	761-3045-B-440-AL-7	1.41	1.32	P-4	AR-22	1/8	.105	4-40	4-40	761-3045-B-440-B-37	.61	.58
3/16	.105	1/4"	4-40	761-3046-B-440-AL-7	1.42	1.33	P-4	AR-22	3/16	.105	4-40	4-40	761-3046-B-440-B-37	.67	.62
1/4	.105	1/4"	4-40	761-3047-B-440-AL-7	1.43	1.34	P-4	AR-23	1/4	.105	4-40	4-40	761-3047-B-440-B-37	.71	.67
5/16	.105	1/4"	4-40	761-3048-B-440-AL-7	1.44	1.35	P-4	AR-23	5/16	.105	4-40	4-40	761-3048-B-440-B-37	.73	.69
3/8	.105	1/4"	4-40	761-3049-B-440-AL-7	1.46	1.37	P-4	AR-23	3/8	.105	4-40	4-40	761-3049-B-440-B-37	.76	.71
7/16	.105	1/4"	4-40	761-3050-B-440-AL-7	1.47	1.38	P-4	AR-23	7/16	.105	4-40	4-40	761-3050-B-440-B-37	.84	.79
1/2	.105	1/4"	4-40	761-3051-B-440-AL-7	1.48	1.39	P-4	AR-24	1/2	.105	4-40	4-40	761-3051-B-440-B-37	.93	.87
1/8	.135	1/4"	4-40	761-3045-C-440-AL-7	1.41	1.32	P-4	AR-24	1/8	.135	4-40	4-40	761-3045-C-440-B-37	.61	.58
3/16	.135	1/4"	4-40	761-3046-C-440-AL-7	1.42	1.33	P-4	AR-24	3/16	.135	4-40	4-40	761-3046-C-440-B-37	.67	.62
1/4	.135	1/4"	4-40	761-3047-C-440-AL-7	1.43	1.34	P-4	AR-24	1/4	.135	4-40	4-40	761-3047-C-440-B-37	.71	.67
5/16	.135	1/4"	4-40	761-3048-C-440-AL-7	1.44	1.35	P-4	AR-24	5/16	.135	4-40	4-40	761-3048-C-440-B-37	.73	.69
3/8	.135	1/4"	4-40	761-3049-C-440-AL-7	1.46	1.37	P-4	AR-24	3/8	.135	4-40	4-40	761-3049-C-440-B-37	.76	.71
7/16	.135	1/4"	4-40	761-3050-C-440-AL-7	1.47	1.38	P-4	AR-24	7/16	.135	4-40	4-40	761-3050-C-440-B-37	.84	.79
1/2	.135	1/4"	4-40	761-3051-C-440-AL-7	1.48	1.39	P-4	AR-24	1/2	.135	4-40	4-40	761-3051-C-440-B-37	.93	.87
1/8	.105	1/4"	6-32	761-3045-B-632-AL-7	1.41	1.32	P-4	AR-22	1/8	.105	6-32	6-32	761-3045-B-632-B-37	.61	.58
3/16	.105	1/4"	6-32	761-3046-B-632-AL-7	1.42	1.33	P-4	AR-22	3/16	.105	6-32	6-32	761-3046-B-632-B-37	.67	.62
1/4	.105	1/4"	6-32	761-3047-B-632-AL-7	1.43	1.34	P-4	AR-23	1/4	.105	6-32	6-32	761-3047-B-632-B-37	.71	.67
5/16	.105	1/4"	6-32	761-3048-B-632-AL-7	1.44	1.35	P-4	AR-23	5/16	.105	6-32	6-32	761-3048-B-632-B-37	.73	.69
3/8	.105	1/4"	6-32	761-3049-B-632-AL-7	1.46	1.37	P-4	AR-23	3/8	.105	6-32	6-32	761-3049-B-632-B-37	.76	.71
7/16	.105	1/4"	6-32	761-3050-B-632-AL-7	1.47	1.38	P-4	AR-23	7/16	.105	6-32	6-32	761-3050-B-632-B-37	.84	.79
1/2	.105	1/4"	6-32	761-3051-B-632-AL-7	1.48	1.39	P-4	AR-24	1/2	.105	6-32	6-32	761-3051-B-632-B-37	1.10	1.01
1/8	.135	1/4"	6-32	761-3045-C-632-AL-7	1.41	1.32	P-4	AR-22	1/8	.135	6-32	6-32	761-3045-C-632-B-37	.61	.58
3/16	.135	1/4"	6-32	761-3046-C-632-AL-7	1.42	1.33	P-4	AR-22	3/16	.135	6-32	6-32	761-3046-C-632-B-37	.67	.62
1/4	.135	1/4"	6-32	761-3047-C-632-AL-7	1.43	1.34	P-4	AR-23	1/4	.135	6-32	6-32	761-3047-C-632-B-37	.71	.67
5/16	.135	1/4"	6-32	761-3048-C-632-AL-7	1.44	1.35	P-4	AR-23	5/16	.135	6-32	6-32	761-3048-C-632-B-37	.73	.69
3/8	.135	1/4"	6-32	761-3049-C-632-AL-7	1.46	1.37	P-4	AR-23	3/8	.135	6-32	6-32	761-3049-C-632-B-37	.76	.71
7/16	.135	1/4"	6-32	761-3050-C-632-AL-7	1.47	1.38	P-4	AR-23	7/16	.135	6-32	6-32	761-3050-C-632-B-37	.84	.79
1/2	.135	1/4"	6-32	761-3051-C-632-AL-7	1.48	1.39	P-4	AR-24	1/2	.135	6-32	6-32	761-3051-C-632-B-37	.93	.87

## SWAGE TOOLING

### Anvil Tooling

The anvil and punch tooling is used for installing swage standoffs. They are 1/2 diameter heat treated steel and require an arbor press with a 1/2 ram or a similar type of press.

"L" (in)	Fig.	MOUSER STOCK NO.	Description	Thread	Counterbore (in)		Price Each	
					Depth (A)	Dia (B)	1	5
3/32-3/16	A	761-AR-18	1/2 Hex X 1" L	1/2 - 24 UNS 3A	0.100	0.190	40.00	36.80
7/32-7/16	A	761-AR-19	1/2 Hex X 1" L	1/2 - 24 UNS 3A	0.220	0.190	40.00	36.80
15/32-11/16	A	761-AR-20	1/2 Hex X 1" L	1/2 - 24 UNS 3A	0.470	0.190	40.00	36.80
23/32-1	A	761-AR-21	1/2 Hex X 1" L	1/2 - 24 UNS 3A	0.720	0.190	40.00	36.80
1/8-3/16	A	761-AR-22	1/2 Hex X 1" L	1/2 - 24 UNS 3A	0.100	0.253	40.00	36.80
1/4-7/16	A	761-AR-23	1/2 Hex X 1" L	1/2 - 24 UNS 3A	0.220	0.253	40.00	36.80
1/2-11/16	A	761-AR-24	1/2 Hex X 1" L	1/2 - 24 UNS 3A	0.470	0.253	40.00	36.80
3/4-2	A	761-AR-25	1/2 Hex X 1" L	1/2 - 24 UNS 3A	0.720	0.253	40.00	36.80

### Punch Tooling

MOUSER STOCK NO.	Fig.	Description	Groove			Price Each	
			Diameter (A)	Depth (B)	Radius (C)	1	5
761-P1-PUNCH	B	.200 Dia x 2.5" L	0.090	0.008	0.014	45.00	41.82
761-P2-PUNCH	B	.220 Dia x 2.5" L	0.125	0.008	0.014	45.00	41.82
761-P3-PUNCH	B	.250 Dia x 2.5" L	0.139	0.008	0.016	45.00	41.82
761-P4-PUNCH	B	.300 Dia x 2.5" L	0.188	0.008	0.019	45.00	41.82
761-P5-PUNCH	B	.350 Dia x 2.5" L	0.234	0.008	0.015	45.00	41.82

