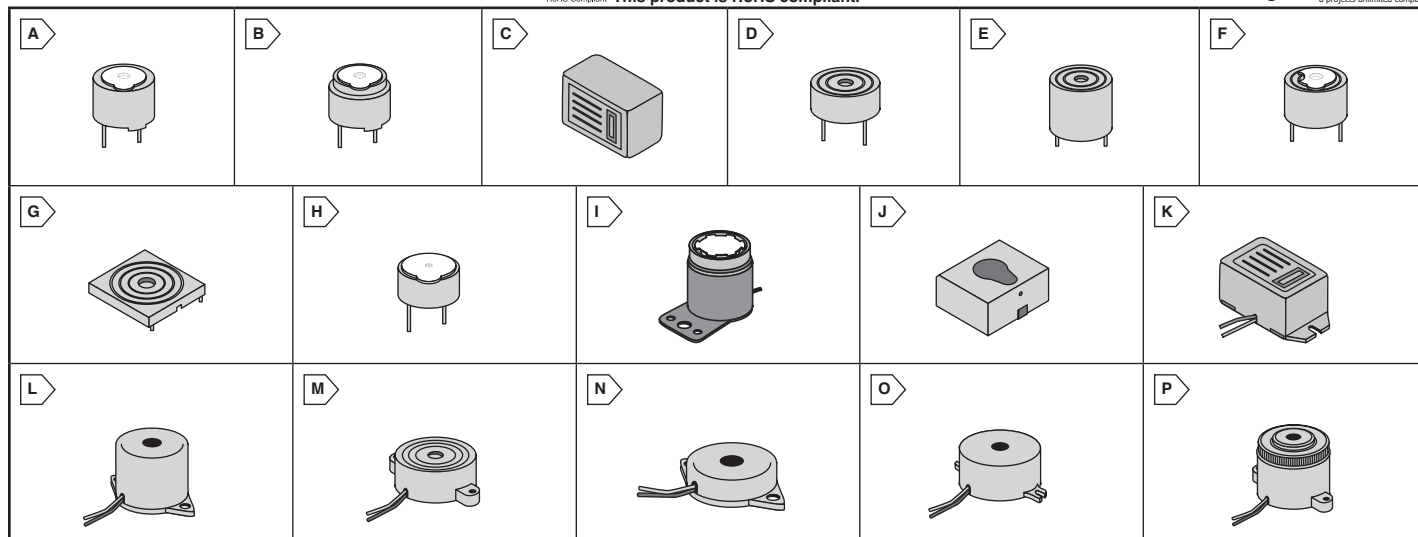


# PUI AUDIO Audio Indicators

RoHS Compliant This product is RoHS compliant.



Projects Unlimited

## AUDIO INDICATORS

### Features:

- Built in drive circuit
- Available in multiple mounting types
- Available in different tones

### Additional Features for Flange and Panel Mount:

- Higher SPL output
- Wider voltage range

### Applications:

- Appliances and white goods
- Medical Equipment
- Test Equipment
- POS and Barcode Scanners
- Hand held devices

### Additional Applications for Flange and Panel Mount:

- Industrial equipment
- Leisure equipment (golf carts, ATVs, etc.)

For quantities greater than listed, call for quote.

MOUSER STOCK NO.	PUI Part No.	Fig.	Resonant Frequency (KHz)	Rated Voltage (VDC)	Rated Current (Max mA)	SPL Min. (10cm) (dB)	Dimensions: mm	Washable	Tone	Price Each				
										1	25	50	100	
<b>PCB Mount Type</b>														
665-AI-1223TWT12VR	AI-1223-TWT-12V-R	A	2300	12	30	85	9.5 x 12 x 12	Yes	Continuous	2.70	2.40	2.28	1.99	
665-AI-1223TWT5VR	AI-1223-TWT-5V-R	A	2300	5	30	85	9.5 x 12 x 13	Yes	Continuous	2.70	2.40	2.28	1.90	
665-AI-1440TWT12VR	AI-1440-TWT-12V-R	A	4000	12	7	80	7.5 x 13.8 x 13.8	Yes	Continuous	3.01	2.30	2.15	1.98	
665-AI-1622TWT12VR	AI-1622-TWT-12V-R	B	2200	12	30	85	14 x 16 x 16	Yes	Continuous	3.45	3.25	2.93	2.60	
665-AI-1622TWT5VR	AI-1622-TWT-5V-R	B	2200	5	30	85	14 x 16 x 17	Yes	Continuous	3.20	2.84	2.70	2.10	
665-AI2304TT24V2R	AI-2304-TT-24V-2-R	C	400	24	30	85	15.5 x 17 x 23	No	Continuous	5.00	4.50	4.00	3.80	
665-AI-2331TWTR	AI-2331-TWT-R	D	3100	12	15	85	9.7 x 23.4 x 23.4	Yes	Continuous	3.88	3.49	3.10	2.72	
665-AI2332TWT12VR	AI-2332-TWT-12V-R	D	3200	12	13	85	10.2 x 23.3 x 23.3	Yes	Continuous	3.88	3.49	3.10	2.45	
665-AI2429TT12VR	AI-2429-TT-12V-R	E	2900	12	8	95	16 x 23.8 x 23.8	No	Continuous	2.77	2.52	2.21	2.08	
665-AI2429TWT12V2R	AI-2429-TWT-12V-2-R	F	2900	12	8	100	16 x 23.8 x 23.8	Yes	Continuous	4.11	3.74	2.46	2.45	
665-AI2429TWT12V3R	AI-2429-TWT-12V-3-R	F	2900	12	8	95	16 x 23.8 x 23.8	Yes	Continuous	3.45	3.14	2.75	2.45	
665-AI-2429TWTR	AI-2429-TWT-R	F	2900	12	8	100	16 x 23.8 x 23.8	Yes	Continuous	3.42	3.04	2.89	2.52	
665-AI2304TT24V-R	AI-2304-TT-24V-R	C	400	24	30	81	14 x 17 x 22.5	No	Continuous	4.16	3.78	3.31	2.79	
665-AI3039TWT12VR	AI-3039-TWT-12V-R	F	3900	12	15	100	20 x 30 x 30	Yes	Continuous	2.90	2.61	1.84	1.68	
665-AI-2437TWTR	AI-2437-TWT-R	F	2000	12	8	100	18 x 24 x 24	Yes	Continuous	4.10	3.66	3.48	3.03	
665-AI2438TTR	AI-2438-TT-R	D	2000	12	8	95	17.2 x 24 x 24	No	Continuous	4.44	4.04	3.54	2.45	
665-AI-3018-TWT-R	AI-3018-TWT-R	F	3100	12	13	87	17.5 x 30 x 30	Yes	Continuous	3.66	3.38	2.93	2.56	
665-AI4033TWTR	AI-4033-TWT-R	G	2000	12	8	95	8.1 x 40 x 40	Yes	Continuous	7.35	6.68	5.85	4.95	
665-AI-4228-TWT-R	AI-4228-TWT-R	H	2800	12	10	99	14 x 42 x 42	Yes	Continuous	3.26	2.96	2.59	2.34	
665-AI5025TWTR	AI-5025-TWT-R	F	2000	12	75	115	29 x 50 x 50	Yes	Continuous	13.09	11.90	10.41	8.99	
665-X2629-TWT-R	X-2629-TWT-R	-	2800	12	35	107	22.8 x 25 x 26	Yes	Continuous	4.03	3.81	3.59	3.43	
665-XL5530LW300S-R	XL-5530-LW300-S-R	I	Siren	12	260	123	54.5 x 54.5 x 56	No	Siren	22.73	20.66	16.08	15.30	
<b>Surface Mount Type</b>														
665-SMI1324TW5VR	SMI-1324-TW-5V-R	J	4000	5	30	85	6.7 x 12.5 x 12.5	Yes	Continuous	5.31	4.95	3.85	3.80	
665-SMI1324TW3VR	SMI-1324-TW-3V-R	J	2500	3	30	75	6.5 x 12.8 x 12.8	Yes	Continuous	6.05	5.45	3.85	3.27	
665-SMI-1324TW5V2R	SMI-1324-TW-5V-2-R	J	4000	5	30	88	6.5 x 12.8 x 12.8	Yes	Continuous	5.45	4.84	4.60	3.59	
665-SMI1324TW12VR	SMI-1324-TW-12V-R	J	2400	12	30	85	6.5 x 12.51 x 3.1	Yes	Continuous	4.88	4.51	3.93	3.64	
665-SMI1740TW12VR	SMI-1740-TW-12V-R	J	4000	12	15	83	7.8 x 17 x 17	Yes	Continuous	4.13	3.71	3.30	3.14	
<b>Flange Mount Type</b>														
665-AI2304TFLW12012R	AI-2304-TF-LW120-12V-R	K	4000	12	30	89	15.5 x 17 x 22.8	No	Continuous	3.92	3.56	2.83	2.64	
665-AI2304TFLW1205VR	AI-2304-TF-LW120-5V-R	K	6000	4.5	20	75	15.5 x 17 x 23	No	Continuous	3.92	3.56	2.83	2.64	
665-AI2304TFLW120R	AI-2304-TF-LW120-R	K	2000	24	24	86	15.5 x 17 x 23	No	Continuous	3.92	3.56	2.83	2.64	
665-AI2337TFLW115R	AI-2337-TF-LW115-R	L	3000	12	8	100	17 x 23 x 33	No	Continuous	3.50	3.18	2.53	2.13	
665-AI2604TFLW11512R	AI-2604-TF-LW115-12V-R	M	4600	12	50	89	16.2 x 26 x 39	No	Continuous	3.92	3.56	2.83	2.64	
665-AI2604TFLW11524R	AI-2604-TF-LW115-24V-R	M	2500	24	25	92	16.2 x 26 x 39	No	Continuous	3.92	3.56	2.83	2.64	
665-AI-3245TFLW95R	AI-3245-TF-LW95-R	N	4500	12	5	90	10.8 x 22 x 32	No	Continuous	2.84	2.52	2.39	2.00	
665-AI4228-TFLW1403R	AI-4228-TF-LW140-3-R	M	2800	12	10	106	16 x 41.8 x 60	No	Continuous	3.59	3.26	2.85	2.58	
665-AI4228TFLW1404R	AI-4228-TF-LW140-4-R	M	2800	12	7	95	16 x 41.8 x 60	No	Continuous	3.12	2.84	2.49	2.27	
665-AI4228TFLW140CR	AI-4228-TF-LW140-C-R	M	5000	12	10	106	16 x 41.8 x 60	No	Continuous	3.59	3.26	2.85	2.70	
665-AI4228TFLW140FPR	AI-4228-TF-LW140-FP-R	M	6000	12	10	98	16 x 41.8 x 60	No	Continuous	5.94	5.40	4.73	4.27	
665-AI-4228TFLW140R	AI-4228-TF-LW140-R	M	4500	12	10	105	16 x 41.8 x 60	No	Continuous	3.66	2.59	2.54	2.49	
665-X4032TFLW105R	X-4032-TF-LW105-R	O	3700	12	9	97	23 x 40 x 50	No	Continuous	6.93	6.30	5.51	4.67	
665-X4033-TF-LW80-R	X-4033-TF-LW80-R	O	3000	6	9	106	23 x 40 x 50	No	Continuous	7.09	6.30	5.99	5.22	
665-XL2835TFPLW150R	XL-2835-TF-FP-LW150-R	P	3500	12	5	92	25.4 x 28 x 39.5	No	Fast	6.05	5.50	4.81	4.08	
665-XL2835TFPLW150R	XL-2835-TF-LW150-R	P	3500	12	6	95	25.4 x 28 x 39.5	No	Continuous	6.92	6.90	5.90	4.35	