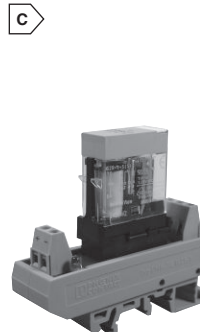
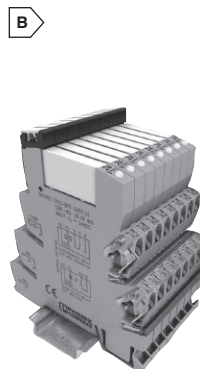
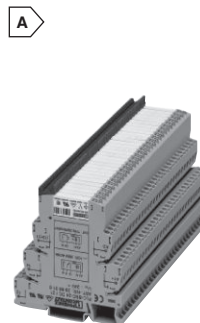


# PHOENIX CONTACT DIN Rail Relays



## PLC SERIES DIN RAIL RELAYS

MOUSER STOCK NO.		Fig.	Phoenix Type	Input Voltage	Contact Type	Contact Material	Description	Price Each	
Mfr.	Mfr. Part No.							1	10
For quantities greater than listed, call for quote.									
<b>Universal PLC Series with Pluggable Relay</b>									
651—2966906		A	PLC-RSC-12DC/21	12VDC	SPDT	AgSnO	Standard Power Contact	17.75	16.39
651—2966171		A	PLC-RSC-24DC/21	24VDC	SPDT	AgSnO	Standard Power Contact	14.21	13.26
651—2966184		A	PLC-RSC-24UC/21	24V AC/DC	SPDT	AgSnO	Standard Power Contact	20.71	19.13
651—2966197		A	PLC-RSC-120UC/21	120VAC	SPDT	AgSnO	Standard Power Contact	18.74	17.30
651—2967060		A	PLC-RSC-24DC/21-21	24VDC	DPDT	AgNi	Standard Power Contact	23.67	21.86
651—2967073		A	PLC-RSC-24UC/21-21	24V AC/DC	DPDT	AgNi	Standard Power Contact	31.55	29.13
651—2967086		A	PLC-RSC-120UC/21-21	120VAC	DPDT	AgNi	Standard Power Contact	29.00	26.40
651—2966265		A	PLC-RSC-24DC/21AU	24VDC	SPDT	Ag+Au	Multi-Layer Contact	23.67	21.86
651—2966278		A	PLC-RSC-24UC/21AU	24V AC/DC	SPDT	Ag+Au	Multi-Layer Contact	23.67	21.85
651—2966281		A	PLC-RSC-120UC/21AU	120VAC	SPDT	Ag+Au	Multi-Layer Contact	27.54	26.10
651—2967125		A	PLC-RSC-24DC/21-21AU	24VDC	DPDT	AgNi+Au	Multi-Layer Contact	27.60	23.90
651—2967604		A	PLC-RSC-24DC/11C/ACT	24VDC	1 N/O	AgSnO	High Inrush Current (80A)	31.56	29.13
651—2967617		A	PLC-RSC-12DC/21HC	12VDC	SPDT	AgNi	High Continuous Current (10A)	31.55	29.14
651—2967620		A	PLC-RSC-24DC/21HC	24V	SPDT	AgNi	High Continuous Current (10A)	25.30	21.68
651—2966210		A	PLC-RSC-24DC/1ACT	24VDC	1 N/O	AgSnO	Actuator Type (6A)	15.00	14.27
651—2967109		A	PLC-RSC-24DC/1-1ACT	24VDC	2 N/O	AgNi	Actuator Type (6A)	21.97	20.83
651—5603154		A	PLC-RSC-24DC/21 C1D2	24VDC	SPDT	AgSnO	Class 1, Division 2 Rated	24.00	22.83
651—5603157		A	PLC-RSC-120UC/21 C1D2	120VAC	SPDT	AgSnO	Class 1, Division 2 Rated	29.51	27.06
<b>Universal PLC Series with Pluggable Optocoupler</b>									
651—2966634		A	PLC-OSC-24DC/24DC/2	24VDC	OPTO	----	33 VDC Max Switching (3A)	35.85	33.98
651—2966650		A	PLC-OSC-120UC/24DC/2	120VAC	OPTO	----	33 VDC Max Switching (3A)	43.59	41.33
651—2966676		A	PLC-OSC-24DC/24DC/2ACT	24VDC	OPTO	----	33 VDC Max Switching, Actuator	38.10	36.23
651—2966728		A	PLC-OSC-24DC/48DC/100	24VDC	OPTO	----	48 VDC Max Switching (100mA)	26.64	24.58
651—2966744		A	PLC-OSC-120UC/48DC/100	120VAC	OPTO	----	48 VDC Max Switching (100mA)	31.01	29.39
<b>Universal PLC Series with Push-In Relay</b>									
651—2900316		B	PLC-RPT- 12DC/21	12VDC	DPDT	AgSnO	Standard Power Contact	15.97	14.73
651—2900299		B	PLC-RPT- 24DC/21	24VDC	SPDT	AgSnO	Standard Power Contact	16.77	15.46
651—2900300		B	PLC-RPT- 24UC/21	24VAC/DC	SPDT	AgSnO	Standard Power Contact	18.11	16.69
651—2900301		B	PLC-RPT- 48DC/21	48VDC	SPDT	AgSnO	Standard Power Contact	18.79	17.32
651—2900303		B	PLC-RPT- 60DC/21	60VDC	SPDT	AgSnO	Standard Power Contact	25.57	23.57
651—2900304		B	PLC-RPT- 120UC/21	120VAC	SPDT	AgSnO	Standard Power Contact	22.66	20.89
651—2900305		B	PLC-RPT-230UC/21	230VAC	SPDT	AgSnO	Standard Power Contact	23.08	21.28
651—2900317		B	PLC-RPT- 12DC/21AU	12VDC	DPDT	AgSnO+Au	Multi-Layer Contact	23.96	22.09
651—2900306		B	PLC-RPT- 24DC/21AU	24VDC	SPDT	AgSnO+Au	Multi-Layer Contact	21.68	19.98
651—2900307		B	PLC-RPT- 24UC/21AU	24VAC/DC	SPDT	AgSnO+Au	Multi-Layer Contact	21.68	19.98
651—2900308		B	PLC-RPT- 48DC/21AU	48VDC	SPDT	AgSnO+Au	Multi-Layer Contact	24.49	22.57
651—2900309		B	PLC-RPT- 60DC/21AU	60VDC	SPDT	AgSnO+Au	Multi-Layer Contact	26.62	24.54
651—2900310		B	PLC-RPT-120UC/21AU	120VAC	SPDT	AgSnO+Au	Multi-Layer Contact	27.39	25.25
651—2900311		B	PLC-RPT-230UC/21AU	230VAC	SPDT	AgSnO+Au	Multi-Layer Contact	26.54	24.47
651—2900312		B	PLC-RPT- 24DC/ 1ACT	24VDC	1 N/O	AgSnO	Actuator Type (6A)	13.69	12.62
651—2900313		B	PLC-RPT- 24DC/ 1AU/SEN	24VDC	1 N/O	AgSnO+Au	Sensor Interface	15.52	14.31
651—2900314		B	PLC-RPT-120UC/ 1AU/SEN	120VAC	1 N/O	AgSnO+Au	Sensor Interface	21.68	19.98
651—2900315		B	PLC-RPT-230UC/ 1AU/SEN	230VAC	1 N/O	AgSnO+Au	Sensor Interface	22.36	20.62
<b>Universal PLC Series with Push-In Optocoupler</b>									
651—2900364		B	PLC-OPT- 24DC/ 24DC/2	24VDC	OPTO	----	33VDC Max Switching (3A)	34.81	32.09
651—2900365		B	PLC-OPT- 48DC/ 24DC/2	48VDC	OPTO	----	33VDC Max Switching (3A)	30.89	28.47
651—2900366		B	PLC-OPT- 60DC/ 24DC/2	60VDC	OPTO	----	33VDC Max Switching (3A)	28.75	26.51
651—2900367		B	PLC-OPT-120UC/ 24DC/2	120VAC	OPTO	----	33VDC Max Switching (3A)	36.16	33.33
651—2900368		B	PLC-OPT-230UC/ 24DC/2	230VAC	OPTO	----	33VDC Max Switching (3A)	33.02	30.44
651—2900352		B	PLC-OPT- 24DC/ 48DC/100	24VDC	OPTO	----	48VDC Max Switching (100mA)	24.10	22.22
651—2900353		B	PLC-OPT- 48DC/ 48DC/100	48VDC	OPTO	----	48VDC Max Switching (100mA)	22.36	20.62
651—2900354		B	PLC-OPT- 60DC/ 48DC/100	60VDC	OPTO	----	48VDC Max Switching (100mA)	22.36	20.62
651—2900355		B	PLC-OPT-120UC/ 48DC/100	120VAC	OPTO	----	48VDC Max Switching (100mA)	29.13	26.85
651—2900356		B	PLC-OPT-230UC/ 48DC/100	230VAC	OPTO	----	48VDC Max Switching (100mA)	25.57	23.57
651—2900369		B	PLC-OPT- 24DC/230AC/1	24VDC	OPTO	----	24-253VAC Max Switching (0.75A)	36.16	33.33
651—2900370		B	PLC-OPT- 48DC/230AC/1	48VDC	OPTO	----	24-253VAC Max Switching (0.75A)	31.95	29.45
651—2900371		B	PLC-OPT- 60DC/230AC/1	60VDC	OPTO	----	24-253VAC Max Switching (0.75A)	29.82	27.49
651—2900372		B	PLC-OPT-120UC/230AC/1	120VAC	OPTO	----	24-253VAC Max Switching (0.75A)	33.08	30.50
651—2900374		B	PLC-OPT-230UC/230AC/1	230VAC	OPTO	----	24-253VAC Max Switching (0.75A)	31.43	28.97
651—2900375		B	PLC-OPT- 5DC/ 24DC/2ACT	5VDC	OPTO	----	33VDC Max Switching Actuator	31.93	29.44
651—2900376		B	PLC-OPT- 24DC/ 24DC/2ACT	24VDC	OPTO	----	33VDC Max Switching Actuator	33.14	30.55
651—2900358		B	PLC-OPT- 24DC/ 48DC/100/SEN	24VDC	OPTO	----	48VDC Max Switching Sensor	24.10	22.22
651—2900359		B	PLC-OPT-120UC/ 48DC/100/SEN	24VDC	OPTO	----	48VDC Max Switching Sensor	26.23	24.18
651—2900361		B	PLC-OPT-230UC/ 48DC/100/SEN	24VDC	OPTO	----	48VDC Max Switching Sensor	25.57	23.57
<b>PLC Series DIN Rail Relay Accessories</b>									
651—2966508		---	PLC-ESK GY	---	---	---	Gray Power Feed Thru Terminal Block (32A)	18.41	17.46
651—2966841		---	PLC-ATP BK	---	---	---	Black Separation Plate	3.00	2.82
651—2295554		---	PLC-V8/FLK 14/OUT	---	---	---	Rapid Output Plug Adapter to 14 Pin Ribbon Connection	43.72	41.57
651—2966692		---	FBST 500-PLC BU	---	---	---	Blue Continuous Plug-in Bridge (500mm Long)	19.73	18.22
651—2966786		---	FBST 500-PLC RD	---	---	---	Red Continuous Plug-In Bridge (500mm Long)	19.73	18.22
651—2966838		---	FBST 500-PLC GY	---	---	---	Gray Continuous Plug-In Bridge (500mm Long)	20.01	19.02
651—1051003		---	ZB 6:UNBEDRUCKT	---	---	---	ZB 6 Unprinted Marker Strip 10 section	1.12	1.00



## UMK 22 PLUGGABLE DIN RAIL POWER RELAY MODULES

- Features:**
- Modules comes with an installed pluggable relay
  - Standard relay socket installed on module
  - Terminal Block has screw clamp contacts
  - Modules have a coil indicator LED
  - Relays are easily replaced without wiring being removed
  - Built in dampening diode circuit for DC

MOUSER STOCK NO.		Fig.	Phoenix Type	Input Voltage	Contact Type	Cont. Current	Description	Price Each	
Mfr.	Mfr. Part No.							1	10
651—5520695		C	UMK 22 REL 24/21-ST	24VDC	SPDT	10A	Pluggable Relay with Mounting Base	48.19	45.29
651—5520734		C	UMK 22 REL 24/21-21-ST	24VDC	DPDT	5A	Pluggable Relay with Mounting Base	61.82	58.08

## ELECTRONIC LOAD RELAY

MOUSER STOCK NO.		Fig.	Phoenix Type	Input Voltage	Contact Type	Cont. Current	Description	Price Each	
Mfr.	Mfr. Part No.							1	10
651—2297138		D	ELR 1-24DC/600AC/20	24VDC	20 A	20A	Single phase	118.45	
651—2297154		D	ELR 1-24DC/600AC/30	24VDC	30 A	30A	Single phase	139.04	