

HONEYWELL Limit Switches

Honeywell

RoHS Compliant This product is RoHS compliant.

LIMITLESS™ WGLA GLOBAL LIMIT SWITCHES & WPMM MONITOR

The new Limitless™ product line combines the best of MICRO SWITCH™ global limit switches with the latest commercial off-the-shelf wireless technology. Wireless-enabled limit switches can now be used for position sensing and presence/absence detection for an endless number of applications. The Limitless™ Series is especially beneficial for remote monitoring applications where wiring or wire maintenance is not physically possible or economically feasible. Combining this greater flexibility with proven harsh duty packaging can result in increased efficiencies and improved safety for machine and equipment OEMs and operators.

Honeywell's Limitless™ solutions should prove to be cost-effective when compared with traditional, wired limit switch solutions based on installation costs, on-going maintenance, and wiring integrity. The WGLA Series features the strong switching specifications and the metal EN 50041 housing of the MICRO SWITCH™ GLA Series further strengthened with wireless capabilities.



RoHS Compliant



Switch



Monitor

Value Propositions:

- **Functionality:** Wireless connectivity meets existing wireless protocol standards and existing mounting configurations. It also maintains the ability to add more I/O devices as needed
- **Installed cost:** The Limitless™ Series greatly reduces the costs of wiring, installation, and maintenance for all devices and equipment
- **Flexibility:** Can be quickly reconfigured to be used point-to-point or potentially network up to 16 switches. WGLA Series switches provide increased productivity (uptime), reduced zcomponent complexity, and danger
- **Honeywell:** The Honeywell brand, with over 75 years of sensing and switch experience, delivers a broad limit switch portfolio with existing configurations and custom products. The Limitless™ Series is an extension of our vast energy-driven experience and resources

Features:

- Enables presence/absence detection in remote parts of applications or machinery, where wiring is an issue or not feasible
- Integration of existing wireless technology with proven reliability of Honeywell's MICRO SWITCH™ limit switch series
- Ability to reconfigure and network multiple switches or point-to-point personalized addresses, thus easily allowing adding, subtracting, or relocating of Limitless™ switches
- Reduced installation/maintenance costs with no wires, conduit, strain relief, clips, connectors, or connection boxes
- Consumes ultra-low power to prolong battery life (replaceable)
- Long-range signal of 1000 ft/304 m line-of-sight in North America
- RF board operating in 2.4 GHz globally license-free frequency band; WPAN 802.15.4
- EN 50041 metal enclosure; IP67; NEMA 1, 4, 12, 13
- Full complement of operating heads and levers, as well as monitor/receivers and accessories

Applications:

- Valve position
- Construction/Ag machines
- Crane boom/jib/skew position
- Remote or temporary equipment
- Lifts
- Moveable machinery
- Material handling
- Grain diverters or flaps
- Presses
- Hose attachment verification
- Conveyors
- Specialty machines

For quantities greater than listed, call for quote.

MOUSER STOCK NO.	Honeywell Part No.	Description	Price Each		
			1	10	50
WGLA Series Global Limit Switch					
785-WGLA1A01AA1A	WGLA1A01AA1A	Limitless™ Series WGLA Global Limit Switch, 2.1 dBi omni straight antenna, use in US/Canada, side rotary – momentary, standard lever with 19 mm x 6,35 mm [0.75 in x 0.25 in] nylon rollers	341.01	312.99	290.90
785-WGLA1A01AA1B	WGLA1A01AA1B	Limitless™ Series WGLA Global Limit Switch, 2.1 dBi omni straight antenna, use in US/Canada, side rotary – momentary, standard lever with 19 mm x 6,35 mm [0.75 in x 0.25 in] steel rollers	358.06	328.63	305.44
785-WGLA1A01AB	WGLA1A01AB	Limitless™ Series WGLA Global Limit Switch, 2.1 dBi omni straight antenna, use in US/Canada, top pin plunger	346.87	318.37	295.90
785-WGLA1A01AC	WGLA1A01AC	Limitless™ Series WGLA Global Limit Switch, 2.1 dBi omni straight antenna, use in US/Canada, top roller plunger	358.06	328.63	305.44
785-WGLA1A01AD	WGLA1A01AD	Limitless™ Series WGLA Global Limit Switch, 2.1 dBi omni straight antenna, use in US/Canada, top roller lever	351.34	322.47	299.72
785-WGLA1A02AB	WGLA1A02AB	Limitless™ Series WGLA Global Limit Switch, 2.1 dBi omni tilt & swivel antenna, use in US/Canada, top pin plunger	349.11	320.41	297.81
785-WGLA1A02AC	WGLA1A02AC	Limitless™ Series WGLA Global Limit Switch, 2.1 dBi omni tilt & swivel antenna, use in US/Canada, top roller plunger	360.30	330.68	307.35
785-WGLA1A02AD	WGLA1A02AD	Limitless™ Series WGLA Global Limit Switch, 2.1 dBi omni tilt & swivel antenna, use in US/Canada, top roller lever	353.58	324.52	301.63
785-WGLA1A04AB	WGLA1A04AB	Limitless™ Series WGLA Global Limit Switch, 5.5 dBi omni remote magnetic mount/tilt & swivel antenna with 5ft of cable, use in US/Canada, top pin plunger	389.39	357.38	332.17
785-WGLA1A04AC	WGLA1A04AC	Limitless™ Series WGLA Global Limit Switch, 5.5 dBi omni remote magnetic mount/tilt & swivel antenna with 5 ft of cable, use in US/Canada, top roller plunger	400.58	367.65	341.72
WPMM Series Monitor					
785-WPMM1A03A	WPMM1A03A	Limitless™ WPMM Series Monitor, 2.4 GHz, 3.0 dBi omni antenna with remote adhesive mounting with 9.8 ft cable, for use in US/Canada	264.28	242.56	225.45
785-WPMM1A04A	WPMM1A04A	Limitless™ WPMM Series Monitor, 2.4 GHz, 5.5 dBi omni antenna (tilt & swivel design) with remote magnetic mounting with 5 ft cable, for use in US/Canada	285.60	262.12	243.63
785-WPMM1A05A	WPMM1A05A	Limitless™ WPMM Series Monitor, 2.4 GHz, 5.5 dBi omni antenna (tilt & swivel design) with remote magnetic mounting with 10 ft cable, for use in US/Canada	307.70	282.41	262.50
785-WPMM1A02A	WPMM1A02A	Limitless™ WPMM Series Monitor, 2.4 GHz, 2.1 dBi omni antenna (tilt & swivel design), for use in US/Canada	247.24	226.91	210.90

Honeywell Limit Switches

MICRO SWITCH™ BX2 SERIES HAZARDOUS AREA SWITCH

The MICRO SWITCH™ BX2 Series has a stainless steel housing that provides enhanced corrosion resistance in applications exposed to aggressive, caustic agents. The stainless steel housing helps protect the switch mechanism from corrosion often present in chemical processing plants, off-shore/near shore sites and other hazardous areas. To comply with explosion-proof switching requirements, the flame path within the switch housing is designed to contain the cool escaping hot gases/fumes which could cause an explosion outside of the switch.

Features:

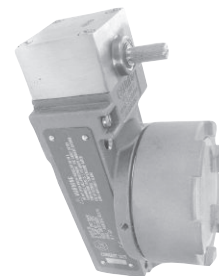
- Same high performance as the MICRO SWITCH™ BX series with a stainless steel housing
- New stainless steel housing provides corrosion resistance in aggressive environments up to four times longer than standard housing switches
- IP67; NEMA 1, 3, 4, 6, 13
- UL, CSA, ATEX, IEC Ex approvals
- Tracking interchangeable with MICRO SWITCH™ BX Series for drop-in replacement
- Conduit selection for global connectivity
 - 1/2 in and 3/4 in NPT on BX2 products
 - 20 mm on BX24 products
- Variety of heads & non-sparking actuators

Applications (Industrial):

- Off-shore drilling/pipeline (oil and gas, pigging)
- Control valves and actuators
- Gas recovery and blowout preventer units
- Petrochemical plants
- Chemical processing
- Grain elevators
- Waste treatment
- Paint booths
- Mining conveyors
- Pulp and paper handling
- Hazardous waste handling



BX2C4L



BX2P4L



RoHS Compliant

For quantities greater than listed, call for quote.

MOUSER STOCK NO.	Honeywell Part No.	Description	Price Each		
			1	5	10
785-BX2C4L	BX2C4L	Stainless steel housing, 3/4 in - 14NPT conduit, top plunger, plain, 2NO/2NC	751.17	712.04	673.70
785-BX2P4L	BX2P4L	Stainless steel housing, 3/4 in - 14NPT conduit, side rotary, momentary, no lever, low pre-travel, 2NO/2NC	862.18	811.28	762.99