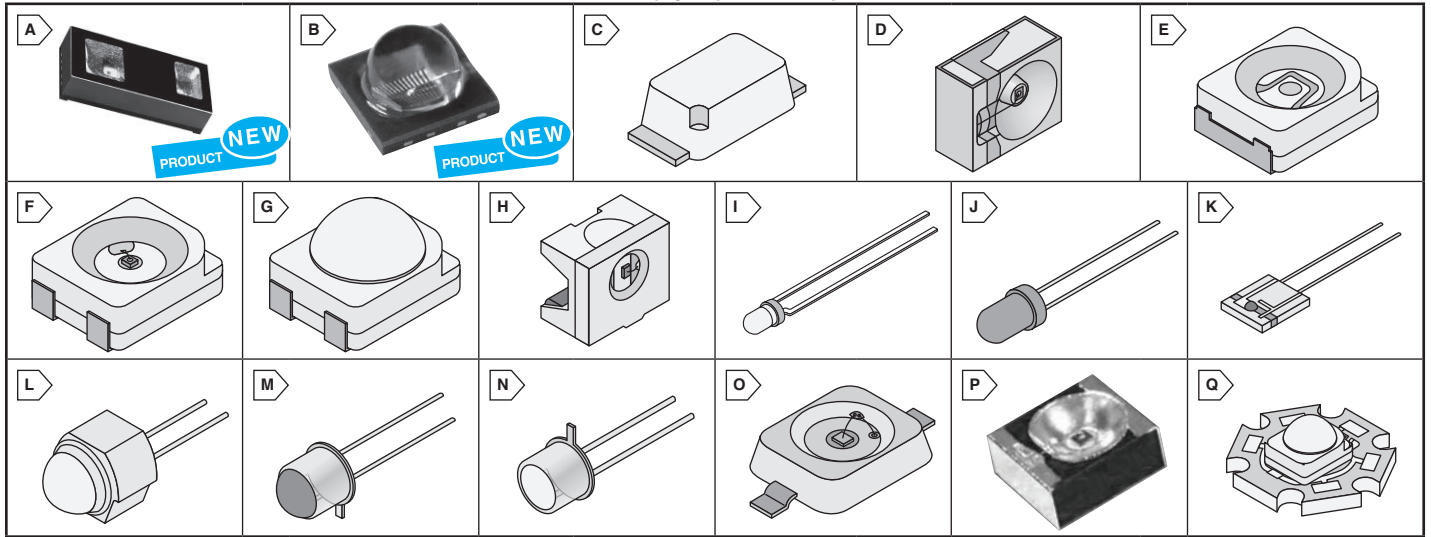


OSRAM Infrared Emitters

RoHS Compliant This page of product is compliant.

OSRAM
Opto Semiconductors

Opto Components
Osram



PROXIMITY AND AMBIENT LIGHT SENSOR

For quantities greater than listed, call for quote.

MOUSER STOCK NO.	Osram Part No.	Fig.	Package	IR Wavelength (nm)	Ambient Light Sensor (lx)	Detection Range (mm)	Interface	Quiescent Current (µA)	Supply Voltage (V)	Dimensions (mm)	Price Each			
											1	10	50	100
720-SFH7773	SFH 7773	A	SMD	850	0.03-65000	150	I2C	2	2.3-3.1	5.4x2.6x1.3	1.39	1.16	.974	.928

INFRARED EMITTER

For quantities greater than listed, call for quote.

MOUSER STOCK NO.	Osram Part No.	Fig.	Package	Wavelength (nm)	Radiant Intensity	Half Angle	Rise/Fall Time (typ)	Forward Voltage	Forward Current	Price Each			
										1	10	50	100
Smallest Infrared LED Emitter													
720-SFH4715S	SFH 4715S	B	SMT	860	500 (≥320) mW/sr	45.0°	7/14ns	3.0	1mA	6.32	5.60	5.25	5.07
720-SFH4715	SFH 4715	B	SMD	850	250mW/sr	45°	7/14ns	1.5V	1A	5.06	4.48	4.20	4.06
Surface Mount Infrared Emitter													
720-SFH4050-Z	SFH 4050-Z	C	SmartLED 0603	880	7 (≥ .4) mW/sr	80.0°	12ns	1.5V	100mA	1.08	.63	.59	.57
720-SFH4650-Z	SFH 4650-Z	D	MIDLED	850	40 (≥ 16) mW/sr	20.0°	12ns	1.5V	100mA	1.14	.66	.62	.60
720-SFH4655-Z	SFH 4655-Z	D	MIDLED	850	40 (≥ 16) mW/sr	20.0°	12ns	1.5V	100mA	1.14	.66	.62	.60
720-SFH4680-Z	SFH 4680-Z	D	MIDLED	880	20 (≥ 10) mW/sr	20.0°	500ns	1.5V	100mA	.92	.53	.50	.48
720-SFH4243-Z	SFH 4243-Z	E	TOPLED PLCC-2	940	11 (≥ 4) mW/sr	60.0°	11ns	1.5V	70mA	.89	.52	.48	.47
720-SFH4253-Z	SFH 4253-Z	E	TOPLED PLCC-2	850	11 (≥ 4) mW/sr	60.0°	10ns	1.5V	70mA	.70	.41	.386	.37
720-SFH4250S	SFH 4250S	F	TopLED PLCC-4	850	22 mW/sr	60°	20/10ns	3 V	70 mA	1.05	.93	.68	.64
720-SFH4240-Z	SFH 4240-Z	F	TOPLED PLCC-4	940	15 (≥ 10) mW/sr	60.0°	11ns	1.5V	100mA	.95	.55	.52	.50
720-SFH4250-Z	SFH 4250-Z	F	TOPLED PLCC-4	950	5 (≥ 2.5) mW/sr	60.0°	500ns	1.3V	100mA	.95	.55	.52	.50
720-SFH4258-Z	SFH 4258-Z	G	TOPLED PLCC-4	850	90 (≥ 40) mW/sr	15.0°	12ns	1.5V	100mA	1.20	.70	.66	.63
720-SFH4258S	SFH 4258S	G	TopLED PLCC-4	850	100 mW/sr	15°	15/15ns	3 V	70 mA	1.16	1.03	.75	.71
720-SFH4259S	SFH 4259S	G	TopLED PLCC-4	850	60 mW/sr	25°	15/15ns	3 V	70 mA	1.16	1.03	.75	.71
720-SFH4244-Z	SFH 4244-Z	H	SIDELED	940	11 (≥ 4) mW/sr	60.0°	11ns	1.5V	70mA	.89	.52	.48	.47
720-SFH4255-Z	SFH 4255-Z	H	SIDELED	850	15 (≥ 10) mW/sr	60.0°	12ns	1.5V	100mA	1.01	.59	.55	.53
720-SFH4058	SFH 4058	-	TOPLED	850	15 (≥ 6.3) mW/sr	40.0°	10ns	1.6V	70mA	1.01	.59	.55	.53
Through Hole Infrared Emitter													
720-SFH405	SFH 405	-	Miniature Package	950	2.5 (≥ 1.6) mW/sr	16.0°	1000ns	1.25V	40mA	2.16	1.27	1.19	1.15
720-SFH487P	SFH 487 P	-	3mm (T1)	880	≥2mW/sr	65.0°	600ns	1.5V	100mA	1.04	.61	.57	.55
720-SFH409	SFH 409	I	3mm (T1)	950	≥ 6.3 mW/sr	20.0°	500ns	1.3V	100mA	.70	.40	.38	.37
720-SFH4350	SFH 4350	I	3mm (T1)	850	70 (≥ 40) mW/sr	13.0°	12ns	1.5V	100mA	.95	.55	.52	.50
720-SFH485P	SFH 485 P	-	5mm (T1 ¾)	880	≥ 3.15 mW/sr	40.0°	600ns	1.5V	100mA	.77	.44	.41	.40
720-SFH4557	SFH 4557	J	5mm (T1 ¾)	850	55 mW/sr	30°	12/12ns	1.5 V	100 mA	.72	.64	.47	.44
720-SFH4550	SFH 4550	J	5mm (T1 ¾)	850	700 (≥ 400) mW/sr	3.0°	12ns	1.5V	100mA	.95	.55	.52	.50
720-SFH4556	SFH 4556	J	5mm (T1 ¾)	850	130 (≥ 40) mW/sr	20.0°	12ns	1.5V	-	.95	.55	.52	.50
720-SFH484	SFH 484	J	5mm (T1 ¾)	880	≥ 50 mW/sr	8.0°	600ns	1.5V	100mA	.61	.35	.33	.32
720-SFH484-2	SFH 484-2	J	5mm (T1 ¾)	880	≥ 80 mW/sr	8.0°	600ns	1.5V	100mA	.77	.44	.41	.40
720-SFH485	SFH 485	J	5mm (T1 ¾)	880	25 ... 160 mW/sr	20.0°	600ns	1.5V	100mA	.61	.35	.33	.32
720-SFH485-2	SFH 485-2	J	5mm (T1 ¾)	880	25 ... 100 mW/sr	20.0°	600ns	1.5V	100mA	.77	.44	.41	.40
720-SFH486	SFH 486	J	5mm (T1 ¾)	880	70 (≥ 40) mW/sr	11.0°	600ns	1.5V	100mA	.61	.35	.33	.32
720-SFH4547	SFH 4547	J	5mm (T1 ¾)	940	50 mW/sr	30°	12/12ns	1.5 V	100 mA	.72	.64	.47	.44
720-IRL80A	IRL 80A	K	Sidelooker	950	≥ 0.4 mW/sr	30.0°	500ns	1.2V	20mA	.64	.37	.35	.33
720-IRL81A	IRL 81A	K	Sidelooker	880	2.5 (≥ 1) mW/sr	25.0°	600ns	1.5V	20mA	.80	.46	.43	.42
720-SFH4110	SFH 4110	K	Sidelooker	950	≥ 2.5 mW/sr	9.0°	450ns	1.2V	20mA	.55	.31	.29	.28
720-SFH4585-Z	SFH 4585-Z	L	SMR	880	55 (≥ 25) mW/sr	15.0°	600ns	1.5V	100mA	.78	.45	.429	.408
720-SFH400	SFH 400	M	TO-18 Metal Can	950	≥ 20 mW/sr	6.0°	1000ns	1.3V	100mA	2.22	1.31	1.22	1.18
720-SFH401	SFH 401	M	TO-18 Metal Can	950	≥ 10 mW/sr	15.0°	1000ns	1.3V	100mA	2.32	1.36	1.28	1.23
720-SFH480	SFH 480	M	TO-18 Metal Can	880	≥ 40 mW/sr	6.0°	600ns	1.5V	100mA	2.13	1.25	1.17	1.13
720-SFH4813	SFH 4813	M	TO-18 Metal Can	950	4.5 (≥ 2.5) mW/sr	35.0°	500ns	1.3V	100mA	6.20	3.66	3.43	3.32
720-SFH4860	SFH 4860	M	TO-18 Metal Can	660	1.3 (≥ 0.63) mW/sr	50.0°	100ns	2.0V	50mA	7.60	4.49	4.20	4.06
720-SFH4811	SFH 4811	N	TO-46 Metal Can	950	40 (≥ 25) mW/sr	5.0°	500ns	1.3V	100mA	3.78	2.23	2.09	2.02
720-SFH4881	SFH 4881	N	TO-46 Metal Can	880	72 (≥ 40) mW/sr	5.0°	500ns	1.5V	100mA	3.47	3.22	2.57	2.23
720-SFH4883	SFH 4883	N	TO-46 Metal Can	880	8 (≥ 4) mW/sr	35.0°	500ns	1.5V	100mA	3.47	3.22	2.57	2.23
High Power Infrared Emitter													
720-SFH4235	SFH 4235	O	IR Dragon	850	320 mW/sr	60.0°	7/40ns	3.0V	1000mA	12.66	7.49	7.02	6.78
720-SFH4232-Z	SFH 4232-Z	O	IR Dragon	850	180 mW/sr	60.0°	10ns	1.8V	1000mA	10.89	6.44	6.04	5.84
720-SFH4233	SFH 4233	O	IR Dragon	950	170 mW/sr	60.0°	8/14ns	1.4V	1000mA	8.61	5.09	4.77	4.61
720-SFH4236	SFH 4236	O	IR Dragon	850	≥ 250 mW/sr	20.0°	7/14ns	1.5V	1000mA	13.64	8.01	7.49	7.29
720-SFH4239	SFH 4239	O	IR Dragon	940	≥ 250 mW/sr	20.0°	8/14ns	1.4V	1000mA	13.64	8.01	7.49	7.29
720-SFH4451	SFH 4451	P	MIDLED	850	55 mW/sr	17.0°	12ns	1.5V	100mA	.64	.587	.516	.467
Infrared Emitter with LED													
720-SFH7221-Z	SFH 7221-Z	F	TOPLED PLCC-4	880	≥4mW/sr	60.0°	500ns	1.5V	15mA	1.16	.68	.638	.615
Ultra High Power Infrared Emitter Ostar													
720-SFH4750	SFH 4750	Q	Ostar Lighting	850	1000 mW/sr	70.0°	10ns	9.5V	1000mA	73.60	58.88	55.20	53.36