

RENESAS/CEL Optocouplers



This product is RoHS compliant.

Safety Standards:

UL = UL Recognized [UL File No.: E72422(S)]
 UL/CSA = UL Recognized and CSA Approved
 UL File No.: E72422(S) / CSA File No.: CA101391
 UL/BSI = UL Recognized and BSI Approved
 UL File No.: E72422(S) / BSI Approved No.: 7112/7420



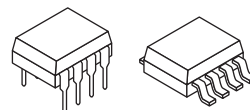
LEAD-FREE



RoHS Compliant



California Eastern Laboratories



Applications:

Can be used as an interface circuit for various instrumentations and control equipment in the following:

- AC line/digital logic
- Twisted pair line receiver
- Digital logic/digital logic
- Telephone/telegraph line receiver

Features:

- High isolation voltage
- High current transfer ratio
- Low cost
- High speed switching

DARLINGTON TRANSISTOR OPTOCOUPLEDERS

General Purpose Optocouplers

◆ **Surface Mount** For quantities greater than listed, call for quote.

MOUSER STOCK NO.	CEL Part No.	Fig.	Package	Safety Standard	IF (mA)	VCEO	VECO	Typical Rise/Fall t_r / t_f (μ s)	Current Transfer Ratio (%)	Price Each			
										1	10	100	500
DC Devices, High Isolation Voltage													
551-PS2502-1-A	PS2502-1-A	A	DIP-4	UL	80	40	6.0	100/100	200 to 2000	.66	.57	.49	.42
◆ 551-PS2502L-1-A	PS2502L-1-A	A	DIP-4 GW	UL	80	40	6.0	100/100	200 to 2000	.81	.72	.61	.52
551-PS2502-4-A	PS2502-4-A	B	DIP-16	UL	80	40	6.0	100/100	200 to 2000	2.97	2.47	2.20	1.87
◆ 551-PS2502L-4-A	PS2502L-4-A	B	DIP-16 GW	UL	80	40	6.0	100/100	200 to 2000	3.00	2.66	2.12	1.89
◆ 551-PS2702-1-A	PS2702-1-A	A	SSOP-4 GW	UL/BSI	50	40	6.0	200/200	200 to 2000	.94	.81	.701	.604
◆ 551-PS2802-1-A	PS2802-1-A	C	SSOP-4 GW	UL/BSI	50	40	6.0	200/200	200 to 2000	1.23	1.10	.90	.78
◆ 551-PS2802-4-A	PS2802-4-A	A	SSOP-16 GW	UL/BSI	50	40	6.0	200/200	200 to 2000	4.70	4.23	3.59	3.21
◆ 551-PS2381-1Y-AX	PS2381-1Y-AX	D	LSOP-4	CSAUL/VDE	1.5	80	7	4/5	50 to 400	.75	.69	.50	.45
AC Devices, High Isolation Voltage													
◆ 551-PS2506-1-A	PS2506-1-A	E	DIP-4	UL	80	40	6.0	100/100	200 to 2000	.89	.76	.66	.56
◆ 551-PS2506L-1-A	PS2506L-1-A	E	DIP-4 GW	UL	80	40	6.0	100/100	200 to 2000	.95	.84	.73	.66

Guaranteed 0.4mm Insulation Optocouplers

◆ **Surface Mount** For quantities greater than listed, call for quote.

MOUSER STOCK NO.	CEL Part No.	Fig.	Package	Safety Standard	IF (mA)	VCEO	VECO	Typical Rise/Fall t_r / t_f (μ s)	Current Transfer Ratio (%)	Price Each			
										1	10	100	500
DC Devices, High CTR, High Isolation Voltage													
◆ 551-PS2562-1-A	PS2562-1-A	A	DIP-4	UL/BSI	80	40	6.0	100/100	200 to 2000	.92	.79	.68	.58
◆ 551-PS2562L-1-A	PS2562L-1-A	A	DIP-4 GW	UL/BSI	80	40	6.0	100/100	200 to 2000	.85	.64	.56	.50

High VCEO Optocouplers

◆ **Surface Mount** For quantities greater than listed, call for quote.

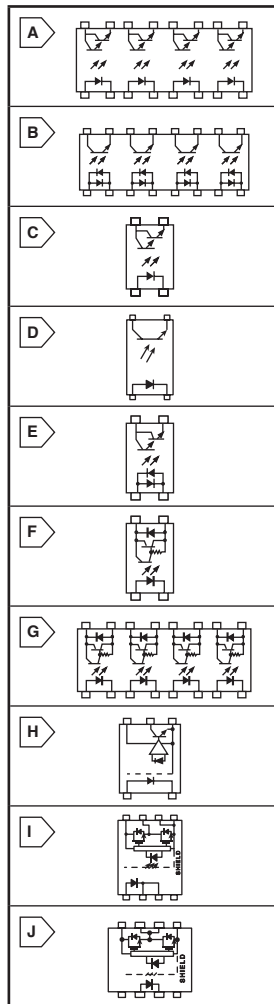
MOUSER STOCK NO.	CEL Part No.	Fig.	Package	Safety Standard	IF (mA)	VCEO	VECO	Typical Rise/Fall t_r / t_f (μ s)	Current Transfer Ratio (%)	Price Each			
										1	10	100	500
DC Devices													
◆ 551-PS2533-1-A	PS2533-1-A	E	DIP-4	UL/BSI	80	350	0.6	100/100	1500 to 6500	1.54	1.36	1.14	.98
◆ 551-PS2933-1-A	PS2933-1-A	F	MiniFlat-4 GW	UL/BSI	50	350	0.3	20/5.0	400 to 4500	1.86	1.61	1.38	1.17

HIGH SPEED OPTOCOUPLEDERS

Digital

◆ **Surface Mount** For quantities greater than listed, call for quote.

MOUSER STOCK NO.	CEL Part No.	Fig.	Package	Safety Standard	Digital Speed (Mbps)	VCC Range (V)	Isolation Voltage (VRMS)	Prop. Delay (L/H) (Typ.) (ns)	Threshold Input Curr. (Typ.) (mA)	Price Each			
										1	10	100	500
10kV/us Minimum Noise Immunity													
◆ 551-PS9121-AX	PS9121-AX	H	SOP-5	UL/VDE	10	2.7 to 5.5	2500	43/46	30	2.86	2.65	2.12	1.80
◆ 551-PS9122L-1-AX	PS9122L-1-AX	H	SO-5	UL	1	4.5 to 5.5	3750	500/700	2	2.83	2.63	2.10	1.78
◆ 551-PS9305L-AX	PS9305L-AX	J	SDIP-8	CSAUL/VDE	0.25	0 to 35	5000	0.18	2	2.97	2.72	1.98	1.78
◆ 551-PS9505L3-AX	PS9505L3-AX	J	DIP-8/SMT	CSAUL/VDE	0.25	0 to 35	5000	0.18	2	2.64	2.42	1.76	1.58
◆ 551-PS9505-AX	PS9505-AX	J	DIP-8/SMT	CSAUL/VDE	0.25	0 to 35	5000	0.18	2	2.64	2.42	1.76	1.58



LASER DIODES

NX7338BF-AA-Features:

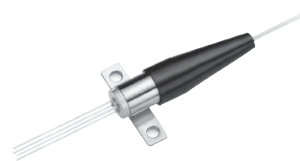
- High output power
 $P_o = 110mW$ @ $I_{pp} = 400 mA^{*1}$
- Long wavelength
 $\lambda_c = 1310nm$

*1 Pulse Conditions: Pluse width (PW) = 10 μ s, Duty = 1%

NX7538BF-AA-Features:

- High output power
 $P_o = 80mW$ @ $I_{pp} = 400 mA^{*1}$
- Long wavelength
 $\lambda_c = 1550nm$

*1 Pulse Conditions: Pluse width (PW) = 10 μ s, Duty = 1%



RoHS Compliant

*Multiple Quantum Well structured Fabry-Perot Laser Diode Coaxial Module

For quantities greater than listed, call for quote.

MOUSER STOCK NO.	CEL Part No.	Package	Fiber Type	Price Each			
				1	2	5	10
551-NX7338BF-AA-AZ-P	NX7338BF-AA-AZ-P	Laser Diode Module 1 310NM 110m W	Single Mode	210.00	203.00	196.00	189.00
551-NX7538BF-AA-AZ	NX7538BF-AA-AZ	Laser Diode Module 1 550NM 80mW	Single Mode	225.00	217.50	210.00	202.50

PHOTO DIODES

Features:

- **Small Dark Current:**
 $I_o = 500nA$
- **Small Terminal Capacitance:**
 $C_T = 0.35pF$ at 0.9V_{on}
- **High Speed Response:**
 $f_c = 2.5GHz$ at 0.9V_{on}
- **Small Terminal Capacitance:**
 $C_T = 0.35pF$ at 0.9V_{on}
- **High Quantum Efficiency:**
 $\mu = 90%$ at $\lambda = 1310nm$, M = 1
 $\mu = 77%$ at $\lambda = 1550nm$, M = 1
- **Detecting Area Size:**
 $\phi 30\mu m$
- **High Quantum Efficiency:**
 $I_o = 500nA$
- **Coaxial Module with Single Mode Fiber (SM-9/125)**



RoHS Compliant

APD In a Coaxial Package for Fiber Optic Communication and OTDR Applications

For quantities greater than listed, call for quote.

MOUSER STOCK NO.	CEL Part No.	Package	Fiber Type	Price Each			
				1	2	5	10
551-NR8300FP-CC-AZ	NR8300FP-CC-AZ	30um InGaAs Avalanche Photo Diode	Single Mode	375.00	362.50	350.00	337.50