

# CINCH Barrier Terminal Blocks and Accessories



RoHS Compliant This product is RoHS compliant.

## BARRIER BLOCKS AND MARKER STRIPS

Series 140 (.375)



### Specifications:

- Voltage rating: 250VACrms
- Current rating: 15A max.
- Withstanding voltage without marker strip: 1100VACrms max.
- Withstanding voltage with marker strip: 2000VACrms max.
- Maximum watts per terminal: 3750

### Mechanical Specifications:

- Maximum wire size: #16AWG
- Recommended tightening torque: 9lb. -in.

For quantities greater than listed, call for quote.

MOUSER STOCK NO.	Cinch Part No.	Fig.	No. of Terminals	L Dimension (in.)	Price Each			
					1	25	50	100
<b>Barrier Blocks</b>								
538-2140	2-140	A	2	1.125	1.56	1.37	1.21	1.11
538-3140	3-140	A	3	1.500	1.69	1.49	1.33	1.21
538-4140	4-140	A	4	1.875	1.83	1.61	1.44	1.30
538-5140	5-140	A	5	2.250	2.01	1.77	1.59	1.43
538-6140	6-140	A	6	2.625	2.60	2.28	2.04	1.84
538-7140	7-140	A	7	3.000	2.81	2.47	2.21	1.99
538-8140	8-140	A	8	3.375	3.23	2.84	2.55	2.30
538-9140	9-140	A	9	3.750	3.69	3.25	2.90	2.62
538-10140	10-140	A	10	4.125	4.06	3.58	3.19	2.89
538-12140	12-140	A	12	4.875	5.34	5.05	4.70	4.23
<b>Marker Strips</b>								
538-MS2140	MS-2-140	A	2	1.125	.72	.64	.57	.51
538-MS3140	MS-3-140	A	3	1.500	.74	.66	.59	.53
538-MS4140	MS-4-140	A	4	1.875	.88	.77	.70	.63
538-MS5140	MS-5-140	A	5	2.250	.83	.792	.761	.73
538-MS6140	MS-6-140	A	6	2.625	.83	.73	.658	.592
538-MS7140	MS-7-140	A	7	3.000	.89	.789	.712	.646
538-MS8140	MS-8-140	A	8	3.375	.94	.84	.75	.69
538-MS9140	MS-9-140	A	9	3.750	1.03	.91	.813	.754
538-MS10140	MS-10-140	A	10	4.125	1.09	.96	.87	.78
538-MS12140	MS-12-140	A	12	4.875	1.08	.96	.86	.78

Series 141 (.438)

### Specifications:

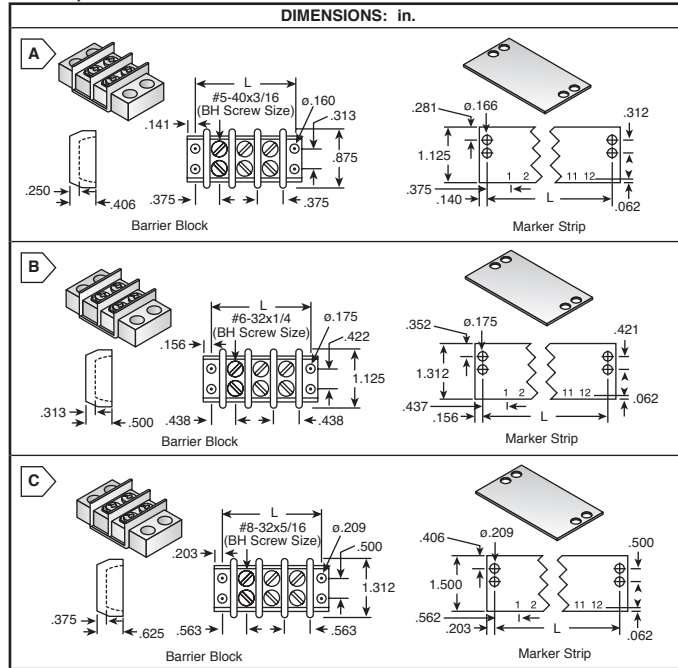
- Voltage rating: 250VACrms
- Current rating: 20A max.
- Withstanding voltage without marker strip: 1100VACrms max.
- Withstanding voltage with marker strip: 2400VACrms max.
- Maximum watts per terminal: 5000

### Mechanical Specifications:

- Maximum wire size: #14AWG
- Recommended tightening torque: 12lb. -in.

For quantities greater than listed, call for quote.

MOUSER STOCK NO.	Cinch Part No.	Fig.	No. of Terminals	L Dimension (in.)	Price Each			
					1	25	50	100
<b>Barrier Blocks</b>								
538-2141	2-141	B	2	1.312	1.23	1.09	.97	.88
538-3141	3-141	B	3	1.750	2.14	1.89	1.68	1.52
538-4141	4-141	B	4	2.187	2.13	1.89	1.68	1.52
538-5141	5-141	B	5	2.625	2.41	2.12	1.89	1.71
538-06141	6-141	B	6	3.062	2.78	2.45	2.19	1.97
538-7141	7-141	B	7	3.500	3.39	2.98	2.67	2.41
538-8141	8-141	B	8	3.938	3.55	3.13	2.80	2.53
538-9141	9-141	B	9	4.375	4.06	3.58	3.19	2.89
538-10141	10-141	B	10	4.813	4.12	3.62	3.23	2.93
538-12141	12-141	B	12	5.687	5.64	5.02	4.48	4.05
<b>Marker Strips</b>								
538-MS2141	MS-2-141	B	2	1.312	.69	.671	.633	.611
538-MS3141	MS-3-141	B	3	1.750	.74	.66	.59	.53
538-MS4141	MS-4-141	B	4	2.187	.83	.73	.66	.59
538-MS5141	MS-5-141	B	5	2.625	.88	.79	.72	.65
538-MS6141	MS-6-141	B	6	3.062	.84	.75	.68	.61
538-MS7141	MS-7-141	B	7	3.500	.89	.789	.712	.680
538-MS8141	MS-8-141	B	8	3.938	1.03	.91	.81	.74
538-MS9141	MS-9-141	B	9	4.375	1.03	.91	.81	.74
538-MS10141	MS-10-141	B	10	4.813	1.08	.96	.86	.78
538-MS12141	MS-12-141	B	12	5.687	1.22	1.08	.97	.88



Series 142 (.563)

### Specifications:

- Voltage rating: 250VACrms
- Current rating: 30A max.
- Withstanding voltage without marker strip: 1600VACrms max.
- Withstanding voltage with marker strip: 2600VACrms max.
- Maximum watts per terminal: 7500

### Mechanical Specifications:

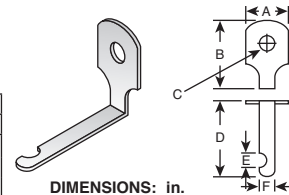
- Maximum wire size: #10AWG
- Recommended tightening torque: 16lb. -in.

For quantities greater than listed, call for quote.

MOUSER STOCK NO.	Cinch Part No.	Fig.	No. of Terminals	L Dimension (in.)	Price Each			
					1	25	50	100
<b>Barrier Blocks</b>								
538-2142	2-142	C	2	1.687	1.99	1.75	1.56	1.42
538-3142	3-142	C	3	2.250	2.43	2.14	1.91	1.73
538-4142	4-142	C	4	2.812	3.02	2.66	2.37	2.14
538-5142	5-142	C	5	3.375	3.98	3.51	3.13	2.83
538-06142	6-142	C	6	3.937	5.68	5.00	4.48	4.04
538-7142	7-142	C	7	4.500	6.23	5.50	4.91	4.44
538-8142	8-142	C	8	5.062	6.84	6.03	5.38	4.87
538-9142	9-142	C	9	5.625	9.94	8.74	7.81	7.07
538-10142	10-142	C	10	6.187	10.41	9.18	8.19	7.41
538-12142	12-142	C	12	7.312	10.98	9.66	8.64	7.79
<b>Marker Strips</b>								
538-MS2142	MS-2-142	C	2	1.687	.72	.641	.567	.514
538-MS3142	MS-3-142	C	3	2.250	.74	.66	.59	.53
538-MS4142	MS-4-142	C	4	2.812	.84	.75	.68	.61
538-MS5142	MS-5-142	C	5	3.375	.84	.75	.676	.611
538-MS6142	MS-6-142	C	6	3.937	.84	.75	.68	.61
538-MS7142	MS-7-142	C	7	4.500	1.03	.91	.813	.736
538-MS8142	MS-8-142	C	8	5.062	1.03	.91	.81	.75
538-MS9142	MS-9-142	C	9	5.625	1.16	1.03	.93	.84
538-MS10142	MS-10-142	C	10	6.187	1.22	1.08	.97	.88
538-MS12142	MS-12-142	C	12	7.312	1.35	1.20	1.06	.965

## SOLDER TERMINALS, "Y" TERMINALS, PC BOARD

MOUSER STOCK NO.	Cinch Part No.	Dimensions (in.)						Price Each			
		A	B	C	D	E	F	1	25	50	100
538-Y140	Y-140	.281	.500	.136	.593	.093	.091	.47	.42	.38	.34
538-Y141	Y-141	.312	.625	.152	.781	.125	.103	.74	.662	.588	.534
538-Y142	Y-142	.421	.734	.177	.906	.125	.126	.88	.79	.72	.65



## JUMPERS

For connecting between adjacent terminals or alternate terminals. All jumpers are brass with nickel plating.

For quantities greater than listed, call for quote.

MOUSER STOCK NO.	Cinch Part No.	Fig.	Barrier Block Series	Price Each			
				1	25	50	100
538-140J-1	140J1	A	140	.33	.30	.27	.26
538-141J-1	141J-1	B	141	.83	.77	.70	.629
538-141J	141J	C	141	.38	.35	.314	.291
538-95B	95B	C	142	1.00	.89	.793	.716
538-142J-1	142J-1	D	142	.47	.42	.38	.34
538-142J-2	142J-2	E	142	.44	.411	.37	.342

