

MOLEX Terminals

RING TONGUE TERMINALS

• Material: Copper

Krimptite®, Non Insulated

For quantities greater than listed, call for quote.

MOUSER STOCK NO.	Molex Part No.	Fig.	Wire Size (AWG)	Stud Size	Price Each			
					1	100	500	1000
538-19069-0042	19069-0042	A	18-22	1/4	.21	.14	.135	.12
538-19069-0049	19069-0049	A	18-22	3/8	.14	.132	.124	.112
538-19069-0107	19069-0107	A	14-16	1/4	.14	.128	.122	.118
538-19069-0109	19069-0109	A	14-16	5/16	.08	.077	.073	.067

Insulkrimp®, PVC Insulated

For quantities greater than listed, call for quote.

MOUSER STOCK NO.	Molex Part No.	Fig.	Wire Size (AWG)	Stud Size	Price Each			
					1	100	500	1000
538-19070-0040	19070-0040	B	18-22	5-6	.29	.124	.115	.08
538-19070-0013	19070-0013	B	18-22	8	.16	.13	.115	.092
538-19070-0015	19070-0015	B	18-22	10	.16	.13	.115	.092
538-19070-0023	19070-0023	B	18-22	1/4	.26	.194	.155	.14
538-19070-0067	19070-0067	B	14-16	3-4	.19	.14	.127	.102
538-19070-0069	19070-0069	B	14-16	5-6	.20	.148	.115	.102
538-19070-0086	19070-0086	B	14-16	8	.19	.14	.109	.096
538-19070-0090	19070-0090	B	14-16	10	.19	.147	.122	.097
538-19070-0075	19070-0075	B	14-16	1/4	.27	.168	.131	.116
538-19070-0059	19070-0059	B	14-16	3/8	.31	.22	.176	.158
538-19070-0143	19070-0143	B	10-12	5-6	.36	.28	.241	.195
538-19070-0123	19070-0123	B	10-12	10	.32	.22	.184	.166
538-19070-0132	19070-0132	B	10-12	1/4	.39	.30	.254	.196
538-19070-0155	19070-0155	B	10-12	5/16	.37	.27	.26	.237
538-19070-0153	19070-0153	B	10-12	3/8	.48	.372	.314	.244

Avikrimp®, Nylon Insulated

For quantities greater than listed, call for quote.

MOUSER STOCK NO.	Molex Part No.	Fig.	Wire Size (AWG)	Stud Size	Price Each			
					1	100	500	1000
538-19073-0005	19073-0005	B	18-22	1-2	.55	.253	.209	.183
538-19073-0007	19073-0007	B	18-22	3-4	.30	.24	.19	.167
538-19073-0038	19073-0038	B	18-22	5-6	.27	.18	.169	.154
538-19073-0013	19073-0013	B	18-22	8	.29	.25	.219	.176
538-19073-0017	19073-0017	B	18-22	10	.29	.25	.219	.176
538-19073-0024	19073-0024	B	18-22	1/4	.33	.22	.207	.19
538-19073-0027	19073-0027	B	18-22	5/16	.41	.307	.279	.223
538-19073-0032	19073-0032	B	18-22	3/8	.42	.33	.284	.227
538-19073-0067	19073-0067	B	14-16	5-6	.32	.25	.222	.179
538-19073-0083	19073-0083	B	14-16	5-6	.29	.24	.211	.169
538-19073-0085	19073-0085	B	14-16	8	.31	.203	.188	.172
538-19073-0087	19073-0087	B	14-16	10	.41	.239	.191	.172
538-19073-0076	19073-0076	B	14-16	1/4	.37	.28	.243	.19
538-19073-0079	19073-0079	B	14-16	5/16	.37	.257	.205	.185
538-19073-0059	19073-0059	B	14-16	3/8	.47	.362	.267	.244
538-19073-0170	19073-0170	B	10-12	10	.54	.41	.36	.286
538-19073-0236	19073-0236	B	10-12	3/8	.62	.419	.339	.303
538-19073-0145	19073-0145	B	10-12	1/2	.79	.63	.53	.424

SNAP SPADE TERMINALS

• Material: Copper

Insulkrimp®, PVC Insulated

For quantities greater than listed, call for quote.

MOUSER STOCK NO.	Molex Part No.	Fig.	Wire Size (AWG)	Stud Size	Price Each			
					1	100	500	1000
538-19099-0009	19099-0009	C	18-22	5-6	.25	.187	.146	.129
538-19099-0013	19099-0013	C	18-22	8	.25	.21	.169	.147
538-19099-0015	19099-0015	C	18-22	10	.28	.23	.194	.155
538-19099-0034	19099-0034	C	14-16	10	.25	.20	.17	.136
538-19099-0044	19099-0044	C	10-12	5-6	.34	.252	.233	.205
538-19099-0048	19099-0048	C	10-12	8	.21	.19	.175	.162

SPADE TONGUE TERMINALS

• Material: Copper

Insulkrimp®, PVC Insulated

For quantities greater than listed, call for quote.

MOUSER STOCK NO.	Molex Part No.	Fig.	Wire Size (AWG)	Stud Size	Price Each			
					1	100	500	1000
538-19144-0001	19144-0001	D	18-22	5-6	.37	.15	.14	.102
538-19144-0003	19144-0003	D	18-22	8	.23	.187	.146	.129
538-19144-0005	19144-0005	D	18-22	10	.25	.208	.18	.144
538-19144-0018	19144-0018	D	14-16	5-6	.32	.137	.127	.088
538-19144-0020	19144-0020	D	14-16	8	.34	.146	.135	.094
538-19144-0026	19144-0026	D	14-16	10	.24	.187	.146	.129
538-19144-0037	19144-0037	D	10-12	5-6	.34	.245	.196	.176
538-19144-0039	19144-0039	D	10-12	8	.34	.245	.196	.176

Avikrimp®, Nylon Insulated

For quantities greater than listed, call for quote.

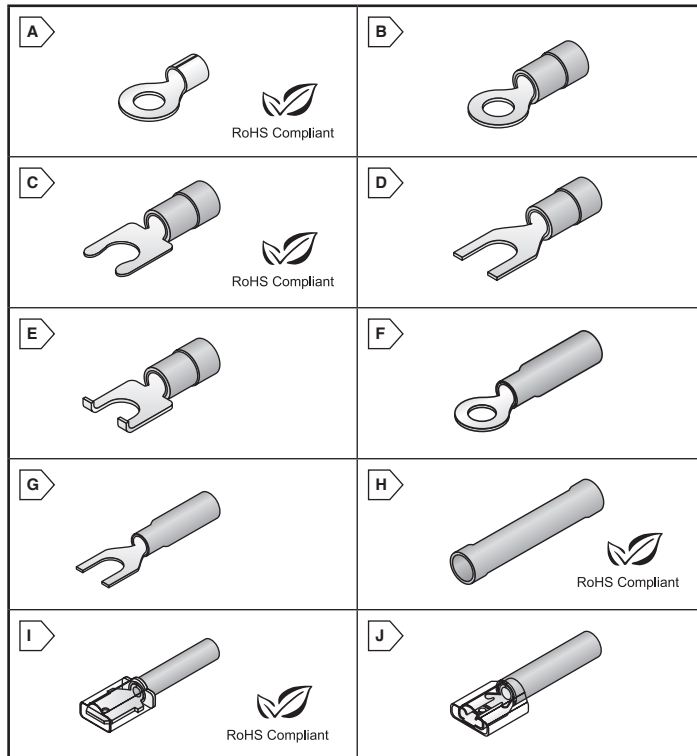
MOUSER STOCK NO.	Molex Part No.	Fig.	Wire Size (AWG)	Stud Size	Price Each			
					1	100	500	1000
538-19198-0070	19198-0070	D	18-22	5-6	.31	.23	.187	.168
538-19198-0004	19198-0004	D	18-22	8	.27	.176	.169	.155
538-19198-0006	19198-0006	D	18-22	10	.25	.16	.154	.141
538-19198-0016	19198-0016	D	14-16	5-6	.31	.223	.178	.161
538-19198-0025	19198-0025	D	14-16	10	.28	.176	.174	.162
538-19198-0044	19198-0044	D	10-12	5-6	.56	.42	.378	.302
538-19198-0047	19198-0047	D	10-12	8	.55	.314	.298	.212

FLANGED SPADE TERMINALS

Insulkrimp®, PVC Insulated

For quantities greater than listed, call for quote.

MOUSER STOCK NO.	Molex Part No.	Fig.	Wire Size (AWG)	Stud Size	Price Each			
					1	100	500	1000
538-19121-0005	19121-0005	E	22-18	5-6	.20	.158	.137	.115
538-19121-0007	19121-0007	E	22-18	8	.25	.203	.162	.146
538-19121-0009	19121-0009	E	22-18	10	.24	.209	.18	.144
538-19121-0028	19121-0028	E	16-14	8	.25	.19	.152	.127
538-19121-0030	19121-0030	E	14-16	10	.27	.22	.181	.139
538-19121-0053	19121-0053	E	10-12	8	.37	.307	.279	.217
538-19121-0056	19121-0056	E	10-12	10	.41	.318	.291	.285



FLANGED SPADE TERMINALS (CONT.)

Avikrimp®, Nylon Insulated

For quantities greater than listed, call for quote.

MOUSER STOCK NO.	Molex Part No.	Fig.	Wire Size (AWG)	Stud Size	Price Each			
					1	100	500	1000
538-19127-0007	19127-0007	E	22-18	5-6	.38	.29	.242	.211
538-19127-0012	19127-0012	E	22-18	10	.44	.319	.295	.237
538-19127-0042	19127-0042	E	16-14	8	.41	.329	.284	.227
538-19127-0086	19127-0086	E	10-12	8	.56	.45	.386	.309
538-19127-0089	19127-0089	E	10-12	10	.56	.451	.384	.302

PERMA-SEAL TERMINALS

• All-weather, heat-sealable terminals and splices

Ring Tongue Terminals

For quantities greater than listed, call for quote.

MOUSER STOCK NO.	Molex Part No.	Fig.	Wire Size (AWG)	Stud Size	Price Each			
					1	100	500	1000
538-19164-0085	19164-0085	F	18-22	6	.69	.396	.377	.267
538-19164-0086	19164-0086	F	18-22	8	.71	.57	.477	.381
538-19164-0003	19164-0003	F	18-22	10	.71	.57	.477	.381
538-19164-0004	19164-0004	F	18-22	1/4	.82	.65	.55	.439
538-19164-0005	19164-0005	F	18-22	3/8	.83	.47	.454	.322
538-19164-0032	19164-0032	F	14-16	6	.76	.60	.512	.409
538-19164-0033	19164-0033	F	14-16	8	.83	.659	.563	.449
538-19164-0034	19164-0034	F	14-16	10	.83	.659	.563	.449
538-19164-0026	19164-0026	F	14-16	1/4	.80	.64	.538	.431
538-19164-0027	19164-0027	F	14-16	5/16	.88	.704	.591	.474
538-19164-0061	19164-0061	F	10-12	6	.90	.72	.603	.482
538-19164-0062	19164-0062	F	10-12	8	.73	.475	.45	.333
538-19164-0065	19164-0065	F	10-12	10	1.05	.835	.71	.568
538-19164-0066	19164-0066	F	10-12	1/4	1.05	.846	.71	.568
538-19164-0067	19164-0067	F	10-12	5/16	.96	.76	.646	.517

Spade Tongue Terminals

For quantities greater than listed, call for quote.

MOUSER STOCK NO.	Molex Part No.	Fig.	Wire Size (AWG)	Stud Size	Price Each			
					1	100	500	1000
538-19164-0006	19164-0006	G	18-22	6	.75	.60	.505	.403
538-19164-0007	19164-0007	G	18-22	8	.75	.60	.505	.403
538-19164-0070	19164-0070	G	10-12	8				