

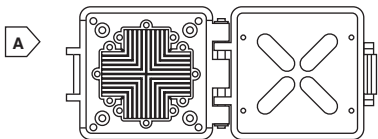
ARIES Sockets



UNIVERSAL PLCC ZIF TEST SOCKET

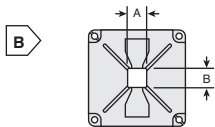
Specifications:

- Body: black ULV-0 glass-filled polyphenylene Sulfide (PPS)
- Contact pin: beryllium copper, gold over nickel plating
- Contact current rating: 1A
- Hardware: stainless steel
- Life cycle: 10,000 insertions max.



Features:

- One socket will accept all seven PLCC sizes: 20, 28, 44, 52, 68 and 84 square PLCC and 32 rectangular PLCC
- Seven adapter plates are available for each PLCC lead count
- The PLCC is inserted "live bug" (pins down)
- Can also be plugged into Aries' Universal ZIF PLCC Socket Receptacle (Mouser Stock No. 535-84-637-10)

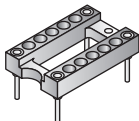


For quantities greater than listed, call for quote.

MOUSER STOCK NO.	Aries Part No.	Fig.	No. of Pins	Dimensions (in.)		Price Each
				A	B	
Universal PLCC ZIF Test Socket						
535-84-537-21	84-537-21	A	---	---	---	265.71
Adapter Plates						
535-20-537-20	20-537-20	B	20	.395/.397	.395/.397	16.53
535-28-537-20	28-537-20	B	28	.495/.497	.495/.497	16.53
535-32-537-20	32-537-20	B	32	.495/.497	.495/.497	16.53
535-44-537-20	44-537-20	B	44	.695/.697	.695/.697	16.53
535-52-537-20	52-537-20	B	52	.795/.797	.795/.797	16.53
535-68-537-20	68-537-20	B	68	.995/.997	.995/.997	16.53
535-84-537-20	84-537-20	B	84	1.195/1.197	1.195/1.197	16.53

4 PIN OSCILLATOR SOCKETS

- Four pin socket accepts standard oscillator packages
- Designed to be end-to-end or side-to-side stackable
- Machine insertable
- Body: Blue UL 94V-0 Glass-filled Polyester Thermoplastic
- Operating Temperature: 221°F [105°C]
- 4-fingered collet contact has 10µ" of Gold plating



For quantities greater than listed, call for quote.

MOUSER STOCK NO.	Aries Part No.	Description	Price Each		
			1	25	100
535-1108800	1108800	Half Size Socket	.58	.48	.39
535-1107741	1107741	Full Size Socket	.58	.48	.39

PLCC TO DIP ADAPTERS

Features:

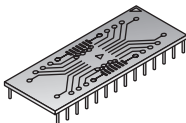
- Converts PLCC packaged IC's to a DIP footprint
- Ideal for prototyping, testing, and evaluation
- PLCC sockets or PLCC contact pads

Specifications:

- Body: FR-4 plastic
- Solder tail pins: brass alloy with tin over nickel plating
- Optional PLCC socket contacts: copper alloy with tin over nickel plating
- Current rating: 1A

For quantities greater than listed, call for quote.

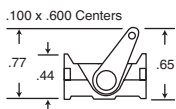
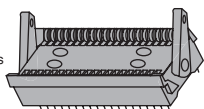
MOUSER STOCK NO.	Aries Part No.	No. of Pins	Price Each		
			1	25	100
With PLCC Pads					
535-28-652000-10	28-652000-10	28	25.56	24.10	23.15
535-44-652000-10	44-652000-10	44	108.30	99.97	86.50
535-68-652000-10	68-652000-10	68	79.68	74.88	71.25
With PLCC Socket					
535-28-653000-10	28-653000-10	28	23.85	22.03	21.83
535-44-653000-10	44-653000-10	44	82.44	77.43	74.70
535-68-653000-10	68-653000-10	68	95.40	88.44	86.52
535-84-653000-10	84-653000-10	84	95.40	88.44	86.52



With PLCC Pads

ZIF IC SOCKETS

A true ZIF (Zero Insertion Force) device. Contacts are normally open and are closed by CAM action controlled by lever arms. A tapered entry guides legs into mating position with contacts.



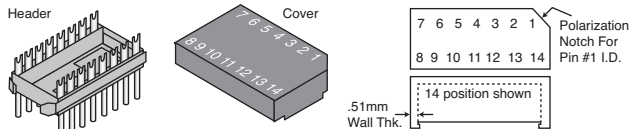
.100" DIP FORK HEADERS AND COVERS

Features:

- Forked contacts accepts up to .025" Dia. leads
- Body cavity design provides additional clearance for components
- Protective covers snap on to headers

Specifications:

- Header body and covers: Red UL 94-HB Glass-filled Nylon
- Contact Rating: 2 Amps
- Operating Temperature: 221°F [105°C] Tin Plating 257°F [125°C] Gold Plating
- PCB Hole Size: .035 Diameter



Headers

For quantities greater than listed, call for quote.

MOUSER STOCK NO.	Aries Part No.	No. of Pins	Row Spacing	Plating	Price Each		
					1	25	100
535-08-600-10	08-600-10	8	.300"	Tin	1.11	.97	.78
535-08-600-11	08-600-11	8	.300"	Gold	1.90	1.40	1.31
535-14-600-10	14-600-10	14	.300"	Tin	1.56	1.36	1.10
535-14-600-11	14-600-11	14	.300"	Gold	2.15	1.86	1.66
535-16-600-10	16-600-10	16	.300"	Tin	1.69	1.47	1.19
535-16-600-11	16-600-11	16	.300"	Gold	2.66	2.12	1.98
535-18-600-10	18-600-10	18	.300"	Tin	1.90	1.65	1.34
535-20-600-10	20-600-10	20	.300"	Tin	2.12	1.76	1.51
535-24-600-10	24-600-10	24	.600"	Tin	3.02	2.64	2.14
535-28-600-10	28-600-10	28	.600"	Tin	2.90	2.54	2.05

Covers for Headers

For quantities greater than listed, call for quote.

MOUSER STOCK NO.	Aries Part No.	No. of Pins	Max. Component Height	Price Each		
				1	25	100
535-08-650-10	08-650-10	8	.125"	1.95	1.76	1.66
535-14-650-10	14-650-10	14	.125"	1.95	1.76	1.66
535-16-650-10	16-650-10	16	.125"	1.95	1.76	1.66
535-20-650-10	20-650-10	20	.125"	3.83	3.14	2.32
535-24-650-10	24-650-10	24	.125"	2.94	2.65	2.32
535-28-650-10	28-650-10	28	.125"	2.94	2.65	2.50
535-14-650-20	14-650-20	14	.375"	1.95	1.76	1.66
535-16-650-20	16-650-20	16	.375"	1.95	1.76	1.66
535-24-650-20	24-650-20	24	.375"	3.83	3.23	2.32

UNIVERSAL ZIF TEST SOCKETS

Aries universal test sockets accept DIP devices with row-to-row pin spacing of .300" to .600". They are direct replacements for other test sockets currently on the market.

Features:

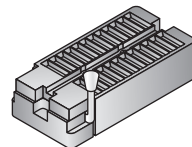
- Accepts DIP devices on .300" to .600" centers
- May be soldered directly to board or plugged into any compatible socket
- Choice of gold or tin plated contacts

Specifications:

- Body: UL94V-0 glass-filled thermoplastic
- Contacts: beryllium copper with gold or tin over nickel
- Current rating: 1A
- Life cycles: 25,000 to 50,000 insertions

For quantities greater than listed, call for quote.

MOUSER STOCK NO.	Aries Part No.	No. of Pins	Price Each		
			1	10	25
Tin Plated Contacts					
535-24-6554-10	24-6554-10	24	7.90	7.31	6.91
535-28-6554-10	28-6554-10	28	9.02	8.40	7.89
535-32-6554-10	32-6554-10	32	10.07	9.28	8.80
535-40-6554-10	40-6554-10	40	12.02	11.23	10.51
535-48-6554-10	48-6554-10	48	14.10	13.41	12.33
Gold Plated Contacts					
535-24-6554-11	24-6554-11	24	12.65	11.99	11.79
535-28-6554-11	28-6554-11	28	15.13	14.57	14.02
535-32-6554-11	32-6554-11	32	16.49	15.39	14.42
535-40-6554-11	40-6554-11	40	17.90	17.20	16.70
535-48-6554-11	48-6554-11	48	21.49	20.12	19.75



LO-PRO ZIF IC SOCKETS

These low profile ZIF IC sockets permit 24, 28, or 40 pin DIP devices to be inserted without bending or damaging the leads. No force is required to insert or remove the component from the socket.

Specifications:

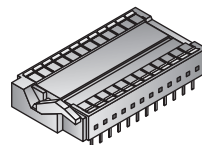
- Body: UL94V-0 glass-filled polyester thermo-plastic
- Contacts: beryllium copper with tin over nickel plating
- Current rating: 2A
- Contacts: tin plated

Features:

- CAM action compresses double sided contacts for gas tight seal
- Test point openings allow access to all pins

For quantities greater than listed, call for quote.

MOUSER STOCK NO.	Aries Part No.	No. of Pins	Price Each		
			1	10	25
535-24-526-10	24-526-10	24	9.68	9.25	8.42
535-28-526-10	28-526-10	28	10.61	10.30	9.38
535-40-526-10	40-526-10	40	10.92	10.19	9.55



DIMENSIONS: in.

For quantities greater than listed, call for quote.

MOUSER STOCK NO.	Aries Part No.	No. of Pins	Plating	Price Each		
				1	10	25
535-28-516-11	28-516-11	28	Gold	21.53	17.95	13.64
535-40-516-11	40-516-11	40	Gold	28.97	24.15	18.35