

ARIES Sockets, Adapters and Jumpers

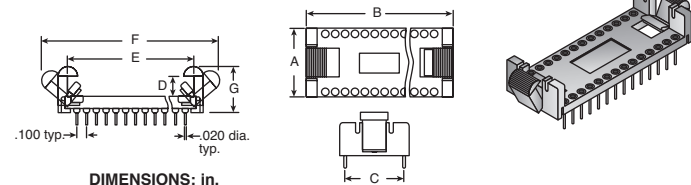


LOCK/EJECT DIP SOCKETS

EJECT-A-DIP® is a rugged, solderable socket with a unique ejector/latch for fast in-field board maintenance. It locks in the connector or device, making it ideal for high vibration environments. When used as an ejector, it removes DIP packages without pin damage.

Specifications:

- Pin body plating: tin glass-filled polyester (PBT)
- Contact current rating: 3A
- Body: UL 94V-0
- Contact plating: 10µ" gold



DIMENSIONS: in.

For quantities greater than listed, call for quote.

| MOUSER STOCK NO. | Aries Part No. | # of Pins | Dimensions: in. | | | | | | | Price Each | | |
|------------------|----------------|-----------|-----------------|------|-----|------|------|------|-----|------------|------|------|
| | | | A | B | C | D | E | F | G | 1 | 10 | 25 |
| 535-16-C280-10 | 16-C280-10 | 16 | .40 | 1.05 | .30 | .280 | .83 | 1.54 | .54 | 4.10 | 3.28 | 2.65 |
| 535-28-C182-10 | 28-C182-10 | 28 | .70 | 1.69 | .60 | .182 | 1.47 | 2.00 | .46 | 6.08 | 4.86 | 4.21 |
| 535-32-C182-10 | 32-C182-10 | 32 | .70 | 1.89 | .60 | .182 | 1.69 | 2.20 | .46 | 6.95 | 5.56 | 4.70 |
| 535-40-C182-10 | 40-C182-10 | 40 | .70 | 2.29 | .60 | .182 | 2.07 | 2.60 | .46 | 7.83 | 6.76 | 5.85 |

OPEN FRAME MACHINE PIN COLLET SOCKETS

Specifications:

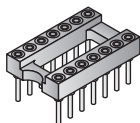
- Body: blue UL 94V-0 glass-filled polyester thermoplastic (PBT)
- Pins: 200µ" tin over 100µ" nickel plated brass
- Contacts: 10µ" gold over 50µ" nickel plated beryllium copper

Features:

- Open frame allows for more efficient utilization of board space and better cooling
- Compatible with automatic insertion equipment

For quantities greater than listed, call for quote.

| MOUSER STOCK NO. | Aries Part No. | # of Pins | Pin Centers | Price Each | | |
|------------------|----------------|-----------|-------------|------------|------|------|
| | | | | 1 | 25 | 100 |
| 535-08-3518-10 | 08-3518-10 | 8 | .300 | .84 | .65 | .47 |
| 535-14-3518-10 | 14-3518-10 | 14 | .300 | 1.20 | 1.11 | .62 |
| 535-16-3518-10 | 16-3518-10 | 16 | .300 | 1.37 | 1.26 | .71 |
| 535-18-3518-10 | 18-3518-10 | 18 | .300 | 1.69 | 1.56 | .88 |
| 535-20-3518-10 | 20-3518-10 | 20 | .300 | 1.53 | 1.41 | .79 |
| 535-24-3518-10 | 24-3518-10 | 24 | .300 | 1.92 | 1.77 | 1.00 |
| 535-24-6518-10 | 24-6518-10 | 24 | .600 | 1.89 | 1.70 | 1.03 |
| 535-28-3518-10 | 28-3518-10 | 28 | .300 | 2.57 | 2.32 | 1.41 |
| 535-28-6518-10 | 28-6518-10 | 28 | .600 | 2.26 | 2.04 | 1.24 |
| 535-32-6518-10 | 32-6518-10 | 32 | .600 | 2.57 | 2.32 | 1.41 |
| 535-40-6518-10 | 40-6518-10 | 40 | .600 | 3.01 | 2.71 | 1.64 |
| 535-48-6518-10 | 48-6518-10 | 48 | .600 | 4.61 | 3.57 | 2.86 |

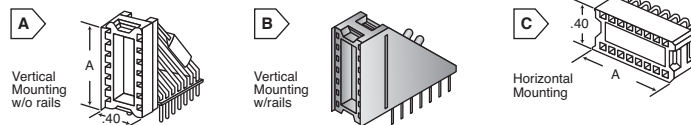


Aries Sockets

DISPLAY SOCKETS

Specifications:

- Body: red UL 94-HB glass-filled nylon
- Contacts: either 10µ" gold or 100µ" tin over 50µ" nickel plated phosphor bronze



DIMENSIONS: in.

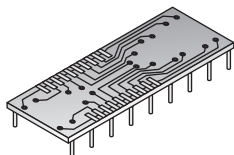
For quantities greater than listed, call for quote.

| MOUSER STOCK NO. | Aries Part No. | Fig. | "A" Dim. (in.) | # of Pins | Plating | Row to Row Sp. | | Price Each | | |
|------------------|----------------|------|----------------|-----------|---------|----------------|------|------------|------|------|
| | | | | | | Socket | Pin | 1 | 10 | 25 |
| 535-10-2810-90 | 10-2810-90 | A | .55 | 10 | Gold | .200 | .100 | 7.20 | 6.04 | 5.31 |
| 535-14-810-90R | 14-810-90R | B | .75 | 14 | Tin | .300 | .100 | 7.06 | 6.21 | 5.66 |
| 535-14-820-90T | 14-820-90T | C | .75 | 14 | Tin | .300 | .100 | 6.71 | 5.24 | 4.56 |
| 535-14-823-90 | 14-823-90 | C | .75 | 14 | Gold | .300 | .300 | 6.10 | 5.36 | 4.81 |
| 535-16-820-90T | 16-820-90T | C | .85 | 16 | Tin | .300 | .100 | 5.60 | 4.75 | 4.47 |

SSOP IC TO DIP ADAPTERS

Specifications:

- Tin plated
- Solder tail pin
- Current rating: 1A
- Operating temperature: 105°C



For quantities greater than listed, call for quote.

| MOUSER STOCK NO. | Aries Part No. | No. of Contacts | Price Each | | |
|------------------|----------------|-----------------|------------|-------|-------|
| | | | 1 | 10 | 25 |
| 535-16-351000-10 | 16-351000-10 | 16 | 26.83 | 24.46 | 22.53 |
| 535-18-351000-10 | 18-351000-10 | 18 | 23.86 | 21.80 | 20.03 |
| 535-20-351000-10 | 20-351000-10 | 20 | 26.83 | 24.46 | 22.53 |
| 535-24-351000-10 | 24-351000-10 | 24 | 28.38 | 25.48 | 22.71 |
| 535-28-351000-10 | 28-351000-10 | 28 | 26.83 | 24.46 | 22.53 |

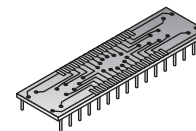
SOIC AND SOJ TO DIP ADAPTERS

Specifications:

- Board material: .062" FR-4
- Pins: brass alloy with tin over nickel plating

Features:

- Cost effective, permits upgrading to SOJ or SOIC--without changing PCB layout
- Available on .300", .400", and .600" centers

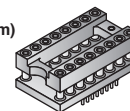
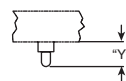
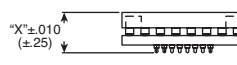


For quantities greater than listed, call for quote.

| MOUSER STOCK NO. | Aries Part No. | No. of Pins | Pin Centers | Price Each | | |
|----------------------|----------------|-------------|-------------|------------|-------|-------|
| | | | | 1 | 10 | 25 |
| .300" Centers | | | | | | |
| 535-08-350000-10 | 08-350000-10 | 8 | SOIC | 5.96 | 5.50 | 5.00 |
| 535-14-350000-10 | 14-350000-10 | 14 | SOIC | 5.96 | 5.50 | 5.00 |
| 535-16-350000-10 | 16-350000-10 | 16 | SOIC | 5.96 | 5.50 | 5.00 |
| 535-18-350000-10 | 18-350000-10 | 18 | SOIC | 5.87 | 5.41 | 5.03 |
| 535-20-350000-10 | 20-350000-10 | 20 | SOIC | 5.96 | 5.50 | 5.00 |
| 535-20-350001-10 | 20-350001-10 | 20 | SOJ | 6.27 | 6.04 | 5.80 |
| 535-24-350000-10 | 24-350000-10 | 24 | SOIC | 5.76 | 5.40 | 4.90 |
| 535-28-350002-10 | 28-350002-10 | 28 | SOIC | 11.01 | 9.71 | 9.34 |
| .400" Centers | | | | | | |
| 535-32-450001-10 | 32-450001-10 | 32 | SOJ | 11.75 | 10.72 | 10.08 |
| .600" Centers | | | | | | |
| 535-24-650000-10 | 24-650000-10 | 24 | SOIC | 11.91 | 11.10 | 9.99 |
| 535-28-650000-10 | 28-650000-10 | 28 | SOIC | 12.25 | 11.31 | 10.82 |
| 535-32-650000-10 | 32-650000-10 | 32 | SOJ | 13.59 | 12.73 | 12.49 |

DIP TO SOIC ADAPTERS

DIMENSIONS: in. (mm)



Specifications:

- Socket body: Black, UL94V-0 Glass-filled 4/6 Nylon
- PCB: FR-4, .062" thick
- Contact current rating: 3A
- Operating temperature: 105°C

| Part No. Suffix | Dim. "X" | Dim. "Y" |
|-----------------|-------------|-------------|
| -10 | .265 (6.73) | .050 (1.27) |
| -20 | .325 (8.26) | .110 (2.79) |

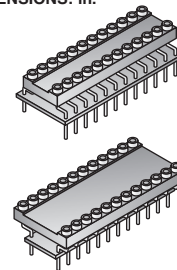
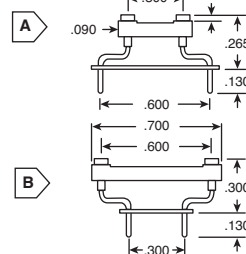
For quantities greater than listed, call for quote.

| MOUSER STOCK NO. | Aries Part No. | No. of Contacts | Price Each | | |
|--------------------------|----------------|-----------------|------------|-------|-------|
| | | | 1 | 10 | 25 |
| Short Adapter Pin | | | | | |
| 535-08-354000-10 | 08-354000-10 | 8 | 23.98 | 19.72 | 17.75 |
| 535-14-3540-10 | 14-354000-10 | 14 | 24.48 | 19.42 | 18.40 |
| 535-16-354000-10 | 16-354000-10 | 16 | 25.68 | 22.12 | 20.52 |
| 535-20-354-000-10 | 20-354000-10 | 20 | 26.90 | 23.49 | 20.84 |
| 535-24-354000-10 | 24-354000-10 | 24 | 27.10 | 25.53 | 23.31 |
| 535-28-354000-10 | 28-354000-10 | 28 | 27.26 | 25.62 | 24.53 |
| Long Adapter Pin | | | | | |
| 535-08-354000-20 | 08-354000-20 | 8 | 23.98 | 19.72 | 17.75 |
| 535-14-354000-20 | 14-354000-20 | 14 | 24.48 | 19.42 | 18.40 |
| 535-16-354000-20 | 16-354000-20 | 16 | 25.68 | 22.12 | 20.52 |
| 535-20-354000-20 | 20-354000-20 | 20 | 26.90 | 23.49 | 20.84 |
| 535-24-354000-20 | 24-354000-20 | 24 | 27.10 | 25.53 | 23.31 |
| 535-28-354000-20 | 28-354000-20 | 28 | 27.26 | 25.62 | 24.53 |

DIP ADAPTER SOCKETS

DIMENSIONS: in.

These adapter sockets allow the use of .300" center devices when the PCB is drilled on .600" centers and vice-versa, giving the flexibility of using .600" or .300" center devices in the same application.



Specifications:

- Pin body plating: tin
- 4-fingered collet contact: beryllium copper
- Contact plating: 30µ" gold
- Contact current rating: 3A
- Socket body: black UL 94-HB glass-filled nylon

For quantities greater than listed, call for quote.

| MOUSER STOCK NO. | Aries Part No. | Fig. | No. of Pins | Description | Price Each | | |
|------------------|----------------|------|-------------|---------------------------------|------------|-------|------|
| | | | | | 1 | 10 | 25 |
| 535-1106396-24 | 1106396-24 | A | 24 | .300" DIP to .600" PCB adapters | 11.36 | 10.35 | 9.88 |
| 535-1106396-28 | 1106396-28 | A | 28 | .300" DIP to .600" PCB adapters | 8.25 | 7.20 | 6.60 |
| 535-1107254-24 | 1107254-24 | B | 24 | .600" DIP to .300" PCB adapters | 7.30 | 6.53 | 6.05 |
| 535-1107254-28 | 1107254-28 | B | 28 | .600" DIP to .300" PCB adapters | 11.00 | 10.36 | 9.62 |

MINI-LINK™ MINIATURE JUMPER

Specifications:

- Body: black UL 94V-0 glass-filled polyester thermoplastic
- Contacts: tin over nickel plated phosphor bronze

Features:

- Mini-Link™ miniature jumpers are useful for jumpering .025" square pins on .100" centers
- Jumper terminal is partially exposed for testing



For quantities greater than listed, call for quote.

| MOUSER STOCK NO. | Aries Part No. | Price Each | | |
|------------------|----------------|------------|-----|-----|
| | | 1 | 25 | 100 |
| 535-ME-100 | ME-100 | .15 | .13 | .11 |