

KYCON Ferrite Filtered D-Subminiature Connectors



This product is RoHS compliant.



KF22 SERIES - RIGHT ANGLE, .318" FOOTPRINT

Specifications:

- PCB Mount - .318" Footprint
- Grounding board locks
- Riveted threaded inserts
- Shell: Steel, Tin plated
- Insulator: PBT Thermoplastic with glass-fiber reinforcement, UL94V-0 rated
- Color: Black
- Contact Material: Plug: Brass; Socket: Phosphor Bronze
- Contact Plating: Gold flash on mating end with Nickel underplate on entire contact, Tin over Nickel on termination end
- Current Rating: 2A
- Voltage Rating: 30V RMS
- Insulation Resistance: more than 1000MΩ
- Operating Temperature: -55°C to +105°C
- RoHS Compliance per Kycon Documentation

Features:

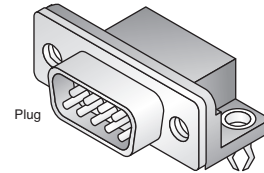
- EMI/RFI noise suppression in data communication lines
- Cost effective way to meet FCC and VDE Class B requirements
- Does not require any more board space than a standard D-Sub

Ferrite filters provide an easy and efficient way of reducing both radiated and conducted interference. KYCON uses a medium permeability nickel zinc ferrite material that is effective at attenuating frequencies above 30MHz.

Ferrite Specifications		
Test Frequency	Edge Hole	Inner Hole
30MHz	17-27 Ohms	22-30 Ohms
50MHz	22-30 Ohms	29-37 Ohms
100MHz	29-34 Ohms	35-40 Ohms



RoHS Compliant

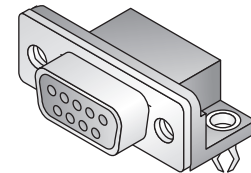


Plug

For quantities greater than listed, call for quote.

MOUSER STOCK NO.	Kycon Part No.	No. of Pos.	Type	Description	Price Each			
					1	25	50	100
806-KF22X-E9P-N	KF22X-E9P-N	9	Plug	Threaded Inserts	2.80	2.71	1.98	1.59
806-KF22X-E9P-NJ	KF22X-E9P-NJ	9	Plug	4-40 Hex. Jack Screws Installed	3.82	3.25	2.79	2.23
806-KF22X-E9S-N	KF22X-E9S-N	9	Receptacle	Threaded Inserts	3.51	3.50	2.55	1.98
806-KF22X-E9S-NJ	KF22X-E9S-NJ	9	Receptacle	4-40 Hex. Jack Screws Installed	3.83	3.26	2.79	2.24
806-KF22X-A15P-N	KF22X-A15P-N	15	Plug	Threaded Inserts	3.67	3.64	2.65	2.09
806-KF22X-A15P-NJ	KF22X-A15P-NJ	15	Plug	4-40 Hex. Jack Screws Installed	3.69	3.57	2.96	2.38
806-KF22X-A15S-N	KF22X-A15S-N	15	Receptacle	Threaded Inserts	2.89	2.56	2.29	2.08
806-KF22X-A15S-NJ	KF22X-A15S-NJ	15	Receptacle	4-40 Hex. Jack Screws Installed	4.78	4.07	3.49	2.81
806-KF22X-B25P-N	KF22X-B25P-N	25	Plug	Threaded Inserts	3.99	3.76	2.75	2.39
806-KF22X-B25P-NJ	KF22X-B25P-NJ	25	Plug	4-40 Hex. Jack Screws Installed	4.40	4.18	3.04	2.66
806-KF22X-B25S-N	KF22X-B25S-N	25	Receptacle	Threaded Inserts	3.74	3.29	2.96	2.67
806-KF22X-B25S-NJ	KF22X-B25S-NJ	25	Receptacle	4-40 Hex. Jack Screws Installed	4.14	3.66	3.29	2.97
806-KF22X-C37P-N	KF22X-C37P-N	37	Plug	Threaded Inserts	8.78	8.51	6.23	5.01
806-KF22X-C37P-NJ	KF22X-C37P-NJ	37	Plug	4-40 Hex. Jack Screws Installed	7.00	6.17	5.53	5.01
806-KF22X-C37P-HJ	KF22X-C37P-HJ	37	Plug	4-40 Hex. Jack Screws, Top GS	8.06	7.57	5.53	4.62

Receptacle



"D" Connectors

KF66 SERIES - RIGHT ANGLE HIGH DENSITY, .350" FOOTPRINT

Specifications:

- PCB Mount - .350" Footprint
- Grounding board locks
- Riveted threaded inserts
- Shell: Steel, Tin plated
- Insulator: PBT Thermoplastic with glass-fiber reinforcement, UL94V-0 rated
- Color: Black
- Contact Material: Plug: Brass; Socket: Phosphor Bronze
- Contact Plating: Gold flash on mating end with Nickel underplate on entire contact, Tin over Nickel on termination end
- Current Rating: 2A
- Voltage Rating: 30V RMS
- Insulation Resistance: more than 1000MΩ
- Operating Temperature: -55°C to +105°C
- RoHS Compliance per Kycon Documentation

Features:

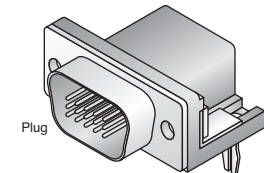
- EMI/RFI noise suppression in data communication lines
- Cost effective way to meet FCC and VDE Class B requirements
- Does not require any more board space than a standard D-Sub

Ferrite filters provide an easy and efficient way of reducing both radiated and conducted interference. KYCON uses a medium permeability nickel zinc ferrite material that is effective at attenuating frequencies above 30MHz.

Ferrite Specifications		
Test Frequency	Outer Row	Inner Row
30MHz	20-23 Ohms	31-38 Ohms
50MHz	24-27 Ohms	37-43 Ohms
100MHz	29-31 Ohms	41-48 Ohms



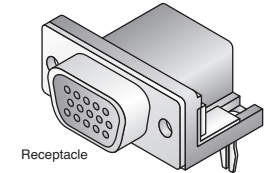
RoHS Compliant



Plug

For quantities greater than listed, call for quote.

MOUSER STOCK NO.	Kycon Part No.	No. of Pos.	Type	Description	Price Each			
					1	25	50	100
806-KF66X-E15P-N	KF66X-E15P-N	15	Plug	Threaded Inserts	4.97	4.38	3.92	3.55
806-KF66X-E15P-NJ	KF66X-E15P-NJ	15	Plug	4-40 Hex. Jack Screws Installed	5.84	5.16	4.62	4.18
806-KF66X-E15S-N	KF66X-E15S-N	15	Receptacle	Threaded Inserts	3.41	3.01	2.70	2.45
806-KF66X-E15S-NJ	KF66X-E15S-NJ	15	Receptacle	4-40 Hex. Jack Screws Installed	4.83	4.68	3.42	2.76
806-KF66X-A26P-N	KF66X-A26P-N	26	Plug	Threaded Inserts	6.50	5.75	5.15	4.66
806-KF66X-A26P-NJ	KF66X-A26P-NJ	26	Plug	4-40 Hex. Jack Screws Installed	6.89	6.09	5.46	4.94
806-KF66X-A26S-N	KF66X-A26S-N	26	Receptacle	Threaded Inserts	8.87	7.83	7.03	6.37
806-KF66X-A26S-NJ	KF66X-A26S-NJ	26	Receptacle	4-40 Hex. Jack Screws Installed	9.28	8.18	7.33	6.63
806-KF66X-B44S-N	KF66X-B44S-N	44	Receptacle	Threaded Inserts	16.18	15.38	11.25	9.52
806-KF66X-B44S-NJ	KF66X-B44S-NJ	44	Receptacle	4-40 Hex. Jack Screws Installed	12.92	11.41	10.24	9.26



Receptacle

KF66 VESA SERIES - RIGHT ANGLE HIGH DENSITY, .350" FOOTPRINT

Specifications:

- PCB Mount - .350" Footprint
- Grounding board locks
- Riveted threaded inserts
- Shell: Steel, Tin plated
- Insulator: PBT Thermoplastic with glass-fiber reinforcement, UL94V-0 rated
- Color: Blue
- Contact Material: Plug: Brass; Socket: Phosphor Bronze
- Contact Plating: Gold flash on mating end with Nickel underplate on entire contact, Tin over Nickel on termination end
- Current Rating: 2A
- Voltage Rating: 30V RMS
- Insulation Resistance: more than 1000MΩ
- Operating Temperature: -55°C to +105°C
- RoHS Compliance per Kycon Documentation

Features:

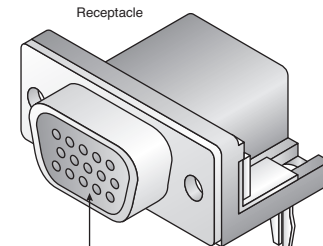
- Pin# 9 recessed 0.050" for last mate/first break on 5V supply voltage
- EMI/RFI noise suppression in data communication lines
- Cost effective way to meet FCC and VDE Class B requirements
- Does not require any more board space than a standard D-Sub

Ferrite filters provide an easy and efficient way of reducing both radiated and conducted interference. KYCON uses a medium permeability nickel zinc ferrite material that is effective at attenuating frequencies above 30MHz.

Ferrite Specifications		
Test Frequency	Outer Row	Inner Row
30MHz	20-23 Ohms	31-38 Ohms
50MHz	24-27 Ohms	37-43 Ohms
100MHz	29-31 Ohms	41-48 Ohms



RoHS Compliant



Receptacle

Blue color signifies 5V capability and full feature AccessBus capability.

For quantities greater than listed, call for quote.

MOUSER STOCK NO.	Kycon Part No.	No. of Pos.	Type	Description	Price Each			
					1	25	50	100
806-KF66X-E15S-NVESA	KF66X-E15S-N-VESA	15	Receptacle	Threaded Inserts	4.45	3.93	3.52	3.18