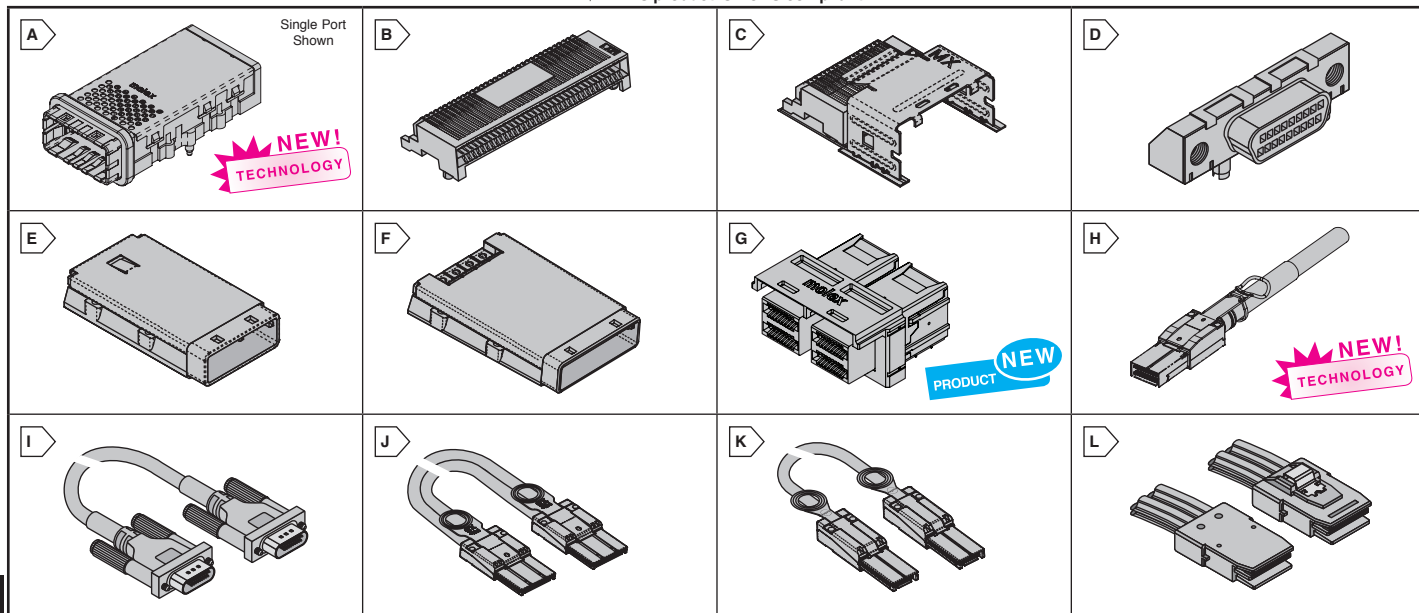


# MOLEX iPass™ and iPass+™ Connectors

**molex**  
one company a world of innovation

RoHS Compliant This product is RoHS compliant.



## iPass™ CONNECTORS

**iPass+ CXP (Series 76105 and 76024):** iPass+ CXP enables 12 channels of 10-Gbps data, for up to 120Gbps of total bandwidth. This new technology results in one of the fastest and highest density I/O's in the market.  
**External iPass Connectors (Series 75586):** The SMT design provides placement options on both sides of the PCB, as well as placements stability. Standoffs allow for easy PCB cleaning after soldering.  
**iPass+ CXP (Series 170465):** Enhanced footprint connectors transmit signals over 10 lanes for up to 100 Gbps, meeting the new industry-leading 100 Gigabit Ethernet specification  
**Internal iPass Connectors (Series 75783):** These 0.80mm (.031") pitch connectors include hood kits for internal applications. Acting as a disposable pick-and-place cap, the pre-positioning device aligns the connector to the hood during robotic placement. It offers 3 keying options.

For quantities greater than listed, call for quote.

MOUSER STOCK NO.	Molex Part No.	Fig.	No. of Pos.	Contact Plating	Pitch	Description	Price Each	
							1	5
<b>iPass+™ CXP Pluggable - External Applications</b>								
<a href="#">538-170465-0002</a>	170465-0002	A	84	30µ" Gold	0.8mm (.031")	Single Port, Press-Fit, RA integrated cage and connector assembly, 100 Gigabit Ethernet	49.40	44.46
<a href="#">538-76024-0568</a>	76024-0568	A	84/84	30µ" Gold	0.8mm (.031")	Dual port stacked, Press-fit, RA integrated cage and connector	63.88	61.96
<b>iPass™ External Applications</b>								
<a href="#">538-75586-0009</a>	75586-0009	B	26	30µ" Gold	0.8mm (.031")	SMT, Right-Angle Receptacle	5.56	5.08
<a href="#">538-75586-0011</a>	75586-0011	B	38	30µ" Gold	0.8mm (.031")	SMT, Right-Angle Receptacle	5.74	5.24
<a href="#">538-75586-0007</a>	75586-0007	B	68	30µ" Gold	0.8mm (.031")	SMT, Right-Angle Receptacle	8.34	7.64
<a href="#">538-75586-0004</a>	75586-0004	B	26	15µ" Gold	0.8mm (.031")	SMT, Right-Angle Receptacle	4.87	4.45
<a href="#">538-75586-0010</a>	75586-0010	B	38	15µ" Gold	0.8mm (.031")	SMT, Right-Angle Receptacle	5.66	5.17
<b>iPass™ Internal Applications</b>								
<a href="#">538-75783-0132</a>	75783-0132	C	36	15µ" Gold	0.8mm (.031")	SMT, R/A Receptacle and Thru-hole Hood Kit for Internal Applications, Universal Key, 1.57mm tail	7.28	6.45
<a href="#">538-75783-0140</a>	75783-0140	C	36	15µ" Gold	0.8mm (.031")	SMT, R/A Receptacle and Thru-hole Hood Kit for Internal Applications, Universal Key, 2.79mm tail	7.41	7.19
<a href="#">538-74960-3018</a>	74960-3018	D	18	15µ" Gold	1.27mm (.050")	1X SMT, Right-Angle Receptacle for Internal Applications	10.48	9.58

## iPass™ GUIDE FRAMES

The guide from gasket delivers improved EMI performance and the die cast frame provides a robust cable-to-chassis interface. It also features a screw attachment to the PCB, offering a durable I/O connection for large cable bundles during the cable management process.

For quantities greater than listed, call for quote.

MOUSER STOCK NO.	Molex Part No.	Fig.	Description	Price Each	
				1	5
<a href="#">538-74548-0211</a>	74548-0211	E	Universal 1X Cage, 0 Degree Standard Host Card, Port Keying 4	7.86	7.62
<a href="#">538-74548-0111</a>	74548-0111	E	Universal 1X Cage, 1 Degree PCI Slot Card, Port Keying 4	7.68	7.42
<a href="#">538-74540-0400</a>	74540-0400	F	4X PCIe Cage, 1 Degree PCI Slot Card	9.69	9.39
<a href="#">538-74540-0100</a>	74540-0100	F	8X PCIe Cage, 1 Degree PCI Slot Card	10.46	9.98

## iPass+™ CONNECTOR

For quantities greater than listed, call for quote.

<a href="#">538-76867-0012</a>	76867-0012	H	HD Internal Cable and Connector Assembly, 1x2, 0.76µm	27.35	25.16
--------------------------------	------------	---	---	-------	-------

## iPass+™ & iPass™ CABLE ASSEMBLIES

For quantities greater than listed, call for quote.

MOUSER STOCK NO.	Molex Part No.	Fig.	No. of Pos.	Contact Plating	Pitch	Standard	Description	Price Each	
								1	5
<b>iPass+™ CXP Pluggable - External Applications</b>									
<a href="#">538-111025-1201</a>	111025-1201	I	84	Gold over Nickel	0.8mm (.031")	QDR Infiniband	12X QDR, up to 120Gbps, 1M (3.3ft.)	149.31	143.13
<b>iPass™ External Applications</b>									
<a href="#">538-74576-0001</a>	74576-0001	J	18	15µ" Gold	.64mm (.025")	PCI Express	1X Cable, 28 AWG, 1M (3.3ft.)	17.16	16.64
<a href="#">538-74546-0401</a>	74546-0401	K	38	Gold over Nickel	.8mm (.031")	PCI Express	4X Cable, 28 AWG, 1M (3.3ft.)	105.62	103.01
<a href="#">538-74546-0801</a>	74546-0801	K	68	Gold over Nickel	.8mm (.031")	PCI Express	8X Cable, 28 AWG, 1M (3.3ft.)	108.40	105.14
<a href="#">538-74546-1601</a>	74546-1601	K	136	Gold over Nickel	.8mm (.031")	PCI Express	16X Cable, 28 AWG, 1M (3.3ft.)	273.47	268.50
<a href="#">538-74547-0120</a>	74547-0120	L	26	Gold over Nickel	.8mm (.031")	Mini-SAS	4X Cable, 28 AWG, 1M (3.3ft.) 2, 4 and 6 Keyed	35.07	34.00
<a href="#">538-74547-0301</a>	74547-0301	L	26	Gold over Nickel	.8mm (.031")	Mini-SAS	4X Cable, 28 AWG, 1M (3.3ft.) 2, 4 and 6 Keyed	35.07	34.01
<b>iPass™ Internal Applications</b>									
<a href="#">538-79576-2105</a>	79576-2105	M	36	Gold over Nickel	.8mm (.031")	Mini-SAS	4X Cable, Controller to Backplane with Sidebands, 30 AWG, 1M	19.20	18.46
<a href="#">538-79576-2104</a>	79576-2104	M	36	Gold over Nickel	.8mm (.031")	Mini-SAS	4X Cable, Controller to Backplane with Sidebands, 28 AWG, 1M	12.72	12.00
<a href="#">538-79576-2114</a>	79576-2114	M	36	Gold over Nickel	.8mm (.031")	Mini-SAS	4X Cable, Controller to Controller with Sidebands, 28 AWG, 1M	14.65	13.84