

# TE Modular Jacks



This product is RoHS compliant.



Authorized Distributor

## SINGLE PORT R/A MODULAR JACKS

### Specifications:

- Color: Black
- Current Rating: 1.5 amp max.
- Voltage Rating: 150 volts ac max.
- Durability: 750 mating cycles
- Housing: Through-Hole: Polyester, UL 94V-0 rated
- Housing STM: Polyphenylene Sulfide, UL 94V-0 rated

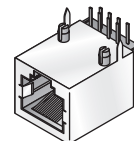
### Features:

- Meets or exceeds FCC Part 68 rules & regulations
- Meets 1000 volt dielectric requirement
- Designed for ease of soldering & board cleaning
- Designed for direct mounting on pc boards
- SMT jacks compatible with vapor phase & IR reflow soldering

### Through-Hole, Standard Profile, Solder PCB Termination

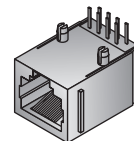
For quantities greater than listed, call for quote.

MOUSER STOCK NO.	TE Part No.	Fig.	Positions-Contacts	LED	Description	Price Each		
						1	25	50
<b>With Panel Stops</b>								
571-5555140-1	5555140-1	A	6/6	-	Shielded, Cat 3, Panel and PCB Ground Options	1.18	1.12	1.06
571-5555140-2	5555140-2	A	6/4	-	Shielded, Cat 3, Panel and PCB Ground Options	1.36	1.16	1.07
571-5520250-1	5520250-1	B	6/2	-	Cat 3, without Ground Options	1.04	.88	.804
571-5557786-1	5557786-1	A	8/8	-	Shielded, Cat 3, without PCB Ground Options	3.65	3.09	2.72
571-5558343-1	5558343-1	B	8/8	-	Cat 5, without Ground Options	4.63	3.97	3.51
571-5520251-4	5520251-4	B	8/8	-	Cat 3, without Ground Options	1.62	1.38	1.22
<b>Without Panel Stops</b>								
571-1116503-2	1116503-2	A	8/8	-	Shielded, Cat 5, PCB Ground Options	4.06	3.77	3.47
571-5558070-1	5558070-1	A	10/10	-	Shielded, Cat 3, Panel and PCB Ground Options	5.95	4.91	4.54
571-5569118-1	5569118-1	B	8/8	-	Cat 3, without Ground Options	1.41	1.26	1.14
571-5569564-1	5569564-1	A	8/8	Grn/Yel	Shielded, Cat 3, Panel and PCB Ground Options	6.44	6.15	6.12
571-1-406541-1	1-406541-1	A	8/8	-	Shielded, Cat 5, Panel and PCB Ground Options	2.71	2.39	2.12
571-2-406549-4	2-406549-4	A	8/8	Yel/Grn	Shielded, Cat 5, Panel and PCB Ground Options	3.42	2.22	2.04
571-5406299-1	5406299-1	A	8/8	-	Shielded, Cat 5, Panel and PCB Ground Options	3.97	3.60	3.30
571-2-406549-1	2-406549-1	A	8/8	Grn/Yel	Shielded, Cat 5, Panel and PCB Ground Options	2.78	2.53	2.32
571-5558341-1	5558341-1	B	8/8	-	Cat 5, without Ground Options	2.46	2.37	2.11
571-5558342-1	5558342-1	A	8/8	-	Shielded, Cat 5, PCB Ground Options	3.74	2.99	2.55
571-5558344-1	5558344-1	A	8/8	-	Shielded, Cat 5, Panel and PCB Ground Options	4.73	3.51	3.50



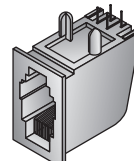
RoHS Compliant

B



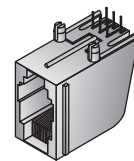
RoHS Compliant

C



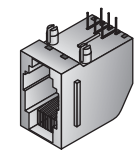
RoHS Compliant

D



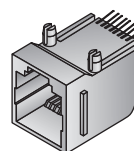
RoHS Compliant

E



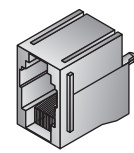
RoHS Compliant

F



RoHS Compliant

G



RoHS Compliant

### Through-Hole, Standard Profile with Center Latch

For quantities greater than listed, call for quote.

MOUSER STOCK NO.	TE Part No.	Fig.	Positions-Contacts	Description	Price Each			
					1	25	50	
<b>Flanged</b>								
571-5520241-2	5520241-2	C	4/4	Cat 3, without Ground Options	1.60	1.18	1.04	
571-5520242-3	5520242-3	C	6/6	Cat 3, without Ground Options	1.50	1.48	1.35	
<b>With Panel Stops</b>								
571-5520249-2	5520249-2	D	4/4	Cat 3, without Ground Options	1.46	1.40	1.33	
571-5520250-2	5520250-2	D	6/4	Cat 3, without Ground Options	1.13	1.03	.95	
571-5520250-3	5520250-3	D	6/6	Cat 3, without Ground Options	1.43	1.23	1.08	
571-5520251-4	5520251-4	D	8/8	Cat 3, without Ground Options	1.62	1.38	1.22	
571-5520252-4	5520252-4	D	8/8	Cat 3, without Ground Options, Keyed	1.14	1.02	1.00	
<b>Without Panel Stops</b>								
571-5555980-1	5555980-1	D	4/4	Cat 3, without Ground Options	1.12	1.05	1.02	
571-5555979-1	5555979-1	D	6/4	Cat 3, without Ground Options	1.41	.97	.89	
571-5520470-3	5520470-3	D	6/6	Cat 3, without Ground Options	1.77	1.69	1.61	
571-5520426-4	5520426-4	D	8/8	Cat 3, without Ground Options	1.59	1.36	1.20	
571-5554517-1	5554517-1	D	8/8	Cat 3, without Ground Options, Keyed	2.83	2.50	1.98	

### Through-Hole, Low Profile, Solder PCB Termination

For quantities greater than listed, call for quote.

MOUSER STOCK NO.	TE Part No.	Fig.	Positions-Contacts	Description	Price Each			
					1	25	50	
<b>With Panel Stops</b>								
571-5555163-1	5555163-1	E	6/6	Cat 3, without Ground Options	1.06	.99	.958	
571-5555163-2	5555163-2	E	6/4	Cat 3, without Ground Options	1.38	1.17	1.08	
571-5555162-1	5555162-1	E	8/8	Cat 3, without Ground Options	1.23	1.19	1.06	
571-5555166-1	5555166-1	E	8/8	Cat 3, without Ground Options, Keyed	1.32	1.12	.997	
<b>Without Panel Stops</b>								
571-5555165-1	5555165-1	E	6/6	Cat 3, without Ground Options	.93	.91	.89	
571-5555165-2	5555165-2	E	6/4	Cat 3, without Ground Options	.92	.859	.77	
571-5555164-1	5555164-1	E	8/8	Cat 3, without Ground Options	.97	.911	.88	
571-5555167-1	5555167-1	E	8/8	Cat 3, without Ground Options, Keyed	.90	.87	.833	
571-5569026-1	5569026-1	E	6/6	Cat 3, without Ground Options	1.47	1.25	1.11	
<b>Shielded</b>								
571-5555154-1	5555154-1	E	6/6	Shielded, Cat 3, with PCB Ground Options	1.37	1.29	1.18	
571-5555153-1	5555153-1	E	8/8	Shielded, Cat 3, with PCB Ground Options	1.50	1.39	1.25	
571-5555141-1	5555141-1	E	8/8	Shielded, Cat 3, with Panel and PCB Ground Options	2.02	1.39	1.27	
571-5556591-1	5556591-1	E	8/8	Shielded, Cat 3, with PCB Ground Options, Keyed	1.28	1.00	.907	
571-5555153-6	5555153-6	E	8/8	Shielded, Cat 3, with PCB Ground Options	1.56	1.08	1.06	
571-5555154-2	5555154-2	E	6/4	Shielded, Cat 3, with PCB Ground Options	1.48	1.18	1.10	

### Surface Mount, Low Profile, Solder PCB Termination

For quantities greater than listed, call for quote.

MOUSER STOCK NO.	TE Part No.	Fig.	Positions-Contacts	Description	Price Each			
					1	25	50	
<b>With Panel Stops</b>								
571-5555077-1	5555077-1	F	6/6	Cat 3, without Ground Options	2.37	2.28	2.16	
571-5555248-1	5555248-1	F	8/8	Cat 3, without Ground Options	3.02	2.36	2.31	
571-5558178-1	5558178-1	F	8/8	Shielded, Cat 3, PCB Ground Options	2.25	2.04	1.88	
<b>Without Panel Stops</b>								
571-5557314-1	5557314-1	F	6/6	Cat 3, without Ground Options	2.92	2.35	1.99	
571-5555764-1	5555764-1	F	8/8	Cat 3, without Ground Options	2.50	1.75	1.75	
571-5555078-1	5555078-1	F	8/8	Cat 3, without Ground Options, Keyed	2.82	2.45	2.15	

### Single Port Top Entry Modular Jacks Through-Hole, Standard Profile

For quantities greater than listed, call for quote.

PCB Termination - Solder With Panel Stops								
MOUSER STOCK NO.	TE Part No.	Fig.	Positions-Contacts	Description	Price Each			
					1	25	50	
571-5520257-2	5520257-2	G	4/4	Cat 3, without Ground Options	1.35	1.21	.965	
571-5520258-2	5520258-2	G	6/4	Cat 3, without Ground Options	.99	.884	.731	
571-5520258-3	5520258-3	G	6/6	Cat 3, without Ground Options	1.34	1.15	1.01	
571-55202594	55202594	G	8/8	Cat 3, without Ground Options	1.12	1.08	1.02	
571-5520260-4	5520260-4	G	8/8	Cat 3, without Ground Options, Keyed	1.48	1.27	1.12	
571-5557969-1	5557969-1	G	8/8	Cat 3, Panel and PCB Ground Options	2.24	2.05	1.96	
571-5557730-1	5557730-1	G	8/8	Shielded, Cat 3, Panel and PCB Ground Options, Keyed	2.50	2.05	1.75	
571-5557969-2	5557969-2	G	8/8	Shielded, Cat 3, Panel and PCB Ground Options	3.12	2.36	2.09	
571-5520258-3	5520258-3	G	6/6	Cat 3, without Ground Options	1.34	1.15	1.01	
<b>Without Panel Stops</b>								
571-5558872-1	5558872-1	G	4/4	Cat 3, without Ground Options	1.40	1.20	1.00	
571-5520425-2	5520425-2	G	6/4	Cat 3, without Ground Options	1.25	1.06	1.00	
571-5520425-3	5520425-3	G	6/6	Cat 3, without Ground Options	1.61	1.38	1.22	
571-5556416-1	5556416-1	G	8/8	Cat 3, without Ground Options	1.16	.994	.878	
571-5555799-1	5555799-1	G	8/8	Cat 3, without Ground Options, Keyed	1.63	1.59	1.48	
571-5520425-3	5520425-3	G	6/6	Cat 3, without Ground Options, Solder	1.61	1.38	1.22	
<b>PCB Termination - Press-Fit</b>								
571-6116418-1	6116418-1	G	8/8	Shielded, Cat 5, Panel and PCB Ground Options	3.86	3.39	2.87	
571-6116202-1	6116202-1	G	8/8	Shielded, Cat 5, PCB Ground Options, Press-Fit	3.69	3.52	3.36	