

PANASONIC Fixed Inductors

Panasonic

RoHS Compliant This product is RoHS compliant.

ELL-4FG SERIES - SMD CHOKE COILS

Applications:

- DC-DC converter circuitry for computer peripherals and cellular phones
- Chopper circuit decoupling chokes for DC-DC converter circuitry

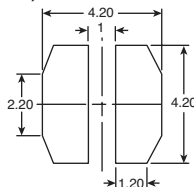


RoHS Compliant

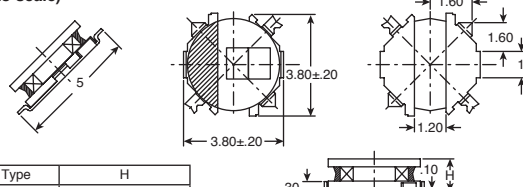
Features:

- Magnetically shielded structure
- Low DC resistance and large current capability
- Shock resistant

Recommended land patterns in mm (not to scale)



DIMENSIONS: mm (not to scale)



Type	H
ELL4FG-A	1.10±.10 (1.20 max.)
ELL4LG-A	1.80 max.

For quantities greater than listed, call for quote.

MOUSER STOCK NO.	Panasonic Part No.	Value (µF)	Tolerance	DCR	Isat (mA max.)	I temp (mA max.)	Price Each			
							1	25	100	500
667-ELL-4FG1R0NA	ELL-4FG1R0NA	1.0	±30%	45	1,900	1,950	.67	.62	.468	.429
667-ELL-4FG1R5NA	ELL-4FG1R5NA	1.5	±30%	60	1,600	1,700	.67	.62	.468	.429
667-ELL-4FG2R0NA	ELL-4FG2R0NA	2.0	±30%	70	1,300	1,550	.67	.62	.468	.429
667-ELL-4FG3R3NA	ELL-4FG3R3NA	3.3	±30%	110	1,100	1,220	.67	.62	.468	.429
667-ELL-4FG4R7NA	ELL-4FG4R7NA	4.7	±30%	160	1,000	1,000	.67	.62	.468	.429
667-ELL-4FG6R8NA	ELL-4FG6R8NA	6.8	±30%	220	800	860	.67	.62	.468	.429
667-ELL-4FG100MA	ELL-4FG100MA	10	±20%	290	700	750	.67	.62	.468	.429
667-ELL-4FG150MA	ELL-4FG150MA	15	±20%	480	600	580	.67	.62	.468	.429
667-ELL-4FG220MA	ELL-4FG220MA	22	±20%	620	420	500	.67	.62	.468	.429
667-ELL-4FG330MA	ELL-4FG330MA	33	±20%	1,060	360	400	.67	.62	.468	.429
667-ELL-4FG470MA	ELL-4FG470MA	47	±20%	1,600	290	330	.67	.62	.468	.429

ELL-4GG SERIES - SMD CHOKE COILS

Applications:

- DC-DC converter circuitry for computer peripherals and cellular phones
- Chopper circuit decoupling chokes for DC-DC converter circuitry

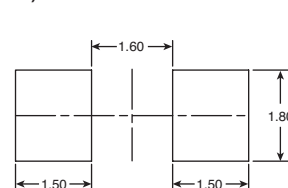


RoHS Compliant

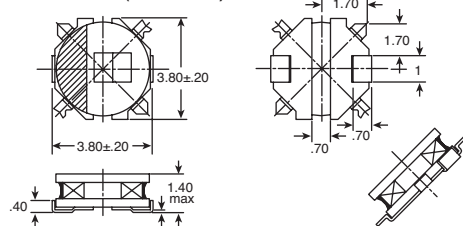
Features:

- Magnetically shielded structure
- Low DC resistance and large current capability
- Shock resistant

Recommended land patterns in mm (not to scale)



DIMENSIONS: mm (not to scale)



For quantities greater than listed, call for quote.

MOUSER STOCK NO.	Panasonic Part No.	Value (µF)	Tolerance	DCR	Isat (mA max.)	I temp (mA max.)	Price Each			
							1	25	100	500
667-ELL-4GG1R2N	ELL-4GG1R2N	1.2	±30%	50	2,400	1,900	.50	.468	.352	.324
667-ELL-4GG1R8N	ELL-4GG1R8N	1.8	±30%	71	1,900	1,550	.50	.468	.352	.324
667-ELL-4GG2R2N	ELL-4GG2R2N	2.2	±30%	88	1,700	1,400	.50	.468	.352	.324
667-ELL-4GG3R3N	ELL-4GG3R3N	3.3	±30%	110	1,500	1,200	.50	.468	.352	.324
667-ELL-4GG3R9N	ELL-4GG3R9N	3.9	±30%	120	1,400	1,150	.50	.468	.352	.324
667-ELL-4GG4R7N	ELL-4GG4R7N	4.7	±30%	160	1,200	1,000	.50	.468	.352	.324
667-ELL-4GG6R8N	ELL-4GG6R8N	6.8	±30%	200	1,050	930	.50	.468	.352	.324
667-ELL-4GG8R2N	ELL-4GG8R2N	8.2	±30%	220	1,000	870	.50	.468	.352	.324
667-ELL-4GG100M	ELL-4GG100M	10	±20%	250	900	770	.50	.468	.352	.324
667-ELL-4GG120M	ELL-4GG120M	12	±20%	380	800	650	.50	.468	.352	.324
667-ELL-4GG150M	ELL-4GG150M	15	±20%	500	700	580	.50	.468	.352	.324
667-ELL-4GG220M	ELL-4GG220M	22	±20%	640	600	500	.50	.468	.352	.324
667-ELL-4GG330M	ELL-4GG330M	33	±20%	980	450	400	.50	.468	.352	.324
667-ELL-4GG101M	ELL-4GG101M	100	±20%	2,400	290	250	.50	.468	.352	.324

ELL-4LG-A SERIES - SMD CHOKE COILS

Applications:

- DC-DC converter circuitry for computer peripherals and cellular phones
- Chopper circuit decoupling chokes for DC-DC converter circuitry

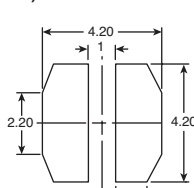


RoHS Compliant

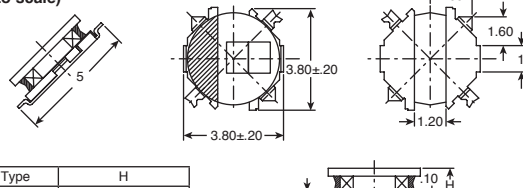
Features:

- Magnetically shielded structure
- Low DC resistance and large current capability
- Shock resistant

Recommended land patterns in mm (not to scale)



DIMENSIONS: mm (not to scale)



Type	H
ELL4FG-A	1.10±.10 (1.20 max.)
ELL4LG-A	1.80 max.

For quantities greater than listed, call for quote.

MOUSER STOCK NO.	Panasonic Part No.	Value (µF)	Tolerance	DCR	Isat (mA max.)	I temp (mA max.)	Price Each			
							1	25	100	500
667-ELL-4LG100MA	ELL-4LG100MA	10	±20%	200	800	950	.57	.527	.397	.364
667-ELL-4LG2R2NA	ELL-4LG2R2NA	2.2	±20%	55	1,500	1,700	.57	.527	.397	.364
667-ELL-4LG680MA	ELL-4LG680MA	68	±20%	1,300	270	350	.57	.527	.397	.364
667-ELL-4LG150MA	ELL-4LG150MA	15	±20%	300	620	730	.57	.527	.397	.364
667-ELL-4LG1R0NA	ELL-4LG1R0NA	1	±20%	41	2,200	1,900	.57	.527	.397	.364
667-ELL-4LG1R5NA	ELL-4LG1R5NA	1.5	±20%	48	1,700	1,800	.57	.527	.397	.364
667-ELL-4LG220MA	ELL-4LG220MA	22	±20%	390	550	640	.57	.527	.397	.364
667-ELL-4LG2R7NA	ELL-4LG2R7NA	2.7	±20%	63	1,400	1,550	.57	.527	.397	.364
667-ELL-4LG330MA	ELL-4LG330MA	33	±20%	610	430	510	.57	.527	.397	.364
667-ELL-4LG3R3NA	ELL-4LG3R3NA	3.3	±20%	72	1,300	1,450	.57	.527	.397	.364
667-ELL-4LG470MA	ELL-4LG470MA	47	±20%	920	360	410	.57	.527	.397	.364
667-ELL-4LG4R7NA	ELL-4LG4R7NA	4.7	±20%	90	1,100	1,300	.57	.527	.397	.364
667-ELL-4LG6R2NA	ELL-4LG6R2NA	6.2	±20%	140	930	1,100	.57	.527	.397	.364
667-ELL-4LG101MA	ELL-4LG101MA	100	±20%	2,200	250	260	.57	.527	.397	.364
667-ELL-4LG151MA	ELL-4LG151MA	150	±20%	3,000	220	220	.57	.527	.397	.364