

CHICAGO MINIATURE Thru-Hole LED Lamps

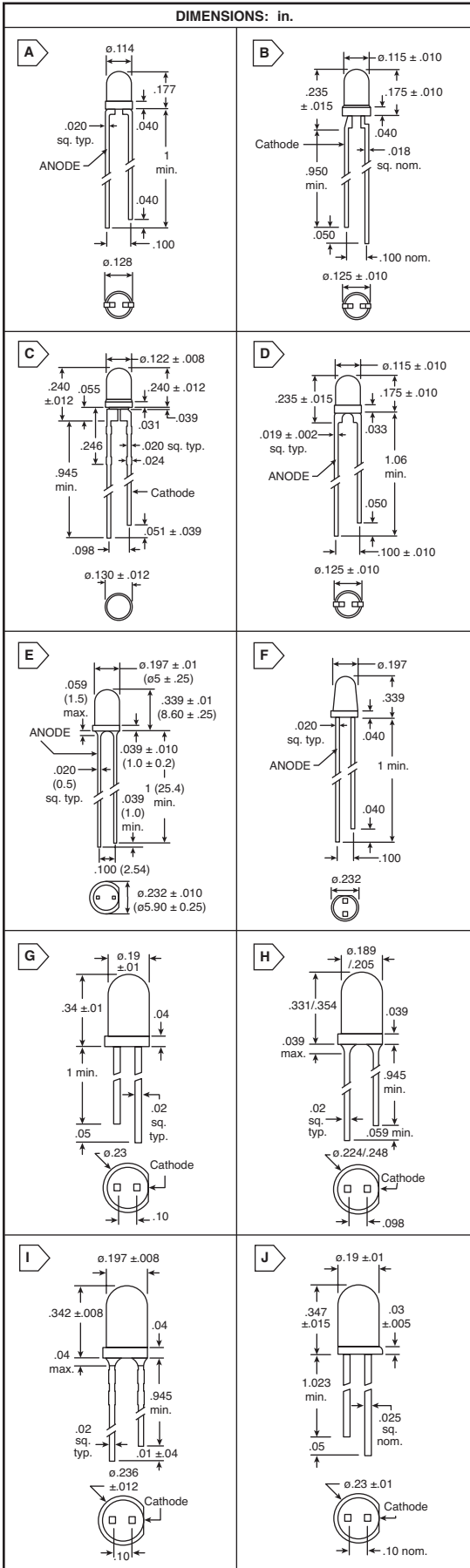
RoHS Compliant This product is RoHS compliant.

Chicago Miniature Lighting, LLC
Lighting the world since 1910

THRU-HOLE LED LAMPS

LED Indication

Chicago Miniature



T-1 Blue

For quantities greater than listed, call for quote.

MOUSER STOCK NO.	Fig.	Color		Forward Voltage @ IF=20mA		Luminous Intensity @ 20mA(mcd)		Peak Wave-length (nm)	Viewing Angle	Price Each		
		LED	Lens	Typ.	Max.	Min.	Typ.			1	100	500
606-CMD264UBD	A	Blue	Blue Diff	4.9	5.5	63	100	430	45°	1.50	1.30	1.21
606-CMD264UBC	A	Blue	Clear	4.9	5.5	160	250	430	30°	1.61	1.40	1.30

T-1 Low Current

For quantities greater than listed, call for quote.

MOUSER STOCK NO.	Fig.	Color		Forward Voltage @ IF=2mA		Luminous Intensity @ 2mA(mcd)		Peak Wave-length (nm)	Viewing Angle	Price Each		
		LED	Lens	Typ.	Max.	Min.	Typ.			1	100	500
606-4300F1LC	B	Red	Red Diff	1.8	2.0	0.8	2.1	634	50°	.35	.30	.28
606-4300F7LC	B	Yellow	Yel Diff	1.9	2.5	0.9	1.6	583	50°	.35	.30	.28
606-4300F5LC	B	Green	Grn Diff	1.8	2.2	1.0	2.1	565	50°	.35	.30	.28

T-1 Super Bright

For quantities greater than listed, call for quote.

MOUSER STOCK NO.	Fig.	Color		Forward Voltage @ IF=2mA		Luminous Intensity @ 2mA(mcd)		Peak Wave-length (nm)	Viewing Angle	Price Each		
		LED	Lens	Typ.	Max.	Min.	Typ.			1	100	500
606-4303F1	C	Red	Red Diff	2.0	3.0	3.6	10.0	650	90°	.21	.18	.17
606-4303F3	C	Amber	Amber Diff	2.2	3.0	3.0	7.0	603	60°	.30	.26	.25
606-4303F7	C	Yellow	Yellow Diff	2.1	3.0	2.2	6.3	585	90°	.21	.18	.17
606-4303F5	C	Green	Green Diff	2.2	3.0	5.6	16.0	562	90°	.19	.16	.154

T-1 w/ Integrated Resistor

For quantities greater than listed, call for quote.

MOUSER STOCK NO.	Fig.	Color		Forward Voltage @ IF=2mA		Luminous Intensity @ 2mA(mcd)		Peak Wave-length (nm)	Viewing Angle	Price Each		
		LED	Lens	Typ.	Max.	Min.	Typ.			1	100	500
606-4302F1-5V	D	Red	Red Diff	5	10	2.0	8.0	635	60°	.49	.42	.39
606-4302F3-5V	D	Amber	Amber Diff	5	10	2.0	8.0	583	60°	.49	.42	.39
606-4302F5-5V	D	Green	Green Diff	5	10	2.0	8.0	565	60°	.49	.42	.39
606-4302F1-12V	D	Red	Red Diff	12	13	2.0	8.0	635	60°	.58	.50	.47
606-4302F3-12V	D	Amber	Amber Diff	12	13	2.0	8.0	583	60°	.58	.50	.47
606-4302F5-12V	D	Green	Green Diff	12	13	2.0	8.0	565	60°	.58	.50	.47

T-1 3/4 White

For quantities greater than listed, call for quote.

MOUSER STOCK NO.	Fig.	Emitted Color	Lens Color	Luminous Intensity			Forward Voltage		Peak Wave-length (nm)	Viewing Angle	Price Each		
				Min. mcd	Typ. mcd	Max. mcd	Typ.	Max.			1	100	500
606-CMD333UWC	E	White	Clear	1.7	2.3	2.6	3.75	3.85	475	20°	2.45	2.21	2.09

T-1 3/4 Blue

For quantities greater than listed, call for quote.

MOUSER STOCK NO.	Fig.	Color		Forward Voltage @ IF=20mA		Luminous Intensity @ 20mA(mcd)		Peak Wave-length (nm)	Viewing Angle	Price Each		
		LED	Lens	Typ.	Max.	Min.	Typ.			1	100	500
606-CMD383UBC/H2	F	Blue	Clear	4.9	5.5	250	350	430	24°	2.52	2.27	2.14
606-CMD383UBC	F	Blue	Clear	4.9	5.5	600	800	430	12°	2.52	2.27	2.14

T-1 3/4 Low Current

For quantities greater than listed, call for quote.

MOUSER STOCK NO.	Fig.	Color		Forward Voltage @ IF=2mA		Luminous Intensity @ 2mA(mcd)		Peak Wave-length (nm)	Viewing Angle	Price Each		
		LED	Lens	Typ.	Max.	Min.	Typ.			1	100	500
606-4300H1LC	G	Red	Red Diff	1.8	2.2	1.3	2.3	635	50°	.35	.30	.28
606-4300H7LC	G	Yellow	Yellow Diff	1.9	2.7	1.0	2.1	583	50°	.35	.30	.28
606-4300H5LC	G	Green	Green Diff	1.8	2.2	1.0	2.3	565	50°	.35	.30	.28

T-1 3/4 Super Bright

For quantities greater than listed, call for quote.

MOUSER STOCK NO.	Fig.	Color		Forward Voltage @ IF=10mA		Luminous Intensity @ 10mA(mcd)		Peak Wave-length (nm)	Viewing Angle	Price Each		
		LED	Lens	Typ.	Max.	Min.	Typ.			1	100	500
606-4304H1	H	Red	Red Diff	2.0	3.0	3.0	6.3	650	65°	.21	.18	.17
606-4304H3	H	Amber	Amber Diff	2.2	3.0	4.0	20.0	608	60°	.28	.24	.23
606-4304H7	H	Yellow	Yellow Diff	2.1	3.0	2.5	6.3	585	65°	.21	.18	.17
606-4304H5	H	Green	Green Diff	2.1	3.0	3.0	10.0	563	75°	.19	.16	.154

T-1 3/4 Ultra Bright

For quantities greater than listed, call for quote.

MOUSER STOCK NO.	Fig.	Color		Forward Voltage @ IF=20mA		Luminous Intensity @ 20mA(mcd)		Peak Wave-length (nm)	Viewing Angle	Price Each		
		LED	Lens	Typ.	Max.	Min.	Typ.			1	100	500
606-4305H1	I	Red	Red	2.1	3.0	20	60	650	30°	.21	.18	.17
606-4305H7	I	Yellow	Yellow	2.2	3.0	56	160	585	30°	.21	.18	.17
606-4305H5	I	Green	Green	2.2	3.0	30	100	563	30°	.21	.18	.17
606-4308H1	J	Red	Clear	1.8	2.2	90	240	645	24°	.58	.50	.47
606-4308H7	J	Yellow	Clear	2.2	3.0	95	140	583	24°	.40	.34	.32
606-4308H5	J	Green	Clear	2.3	3.0	110	140	565	24°	.40	.34	.32