

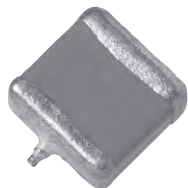
VISHAY/SPRAGUE Solid Tantalum Chip Capacitors



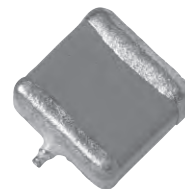
This product is RoHS compliant.

594D SERIES: TANTAMOUNT®, CONFORMAL COATED LOW ESR, MAXIMUM CV

595D SERIES: TANTAMOUNT®, CONFORMAL COATED MAXIMUM CV



RoHS Compliant



RoHS Compliant

* Operating Temperature Range: -55°C to 85°C (125°C with voltage derating)

Tantalum Caps, SMD

Vishay

* Operating Temperature Range: -55°C to 85°C (125°C with voltage derating)

For quantities greater than listed, call for quote.

For quantities greater than listed, call for quote.

MOUSER STOCK NO. Mfr. Part Number	Value (µF)	Tol.± %	Case Code	ESR (Ω)	Price Each			Reel Qty.	Price Per Piece
					1	10	100		
6.3 Volt									
74-594D107X06R3B2T	100	B	20	0.25	1.66	1.39	1.06	2000	.86
74-594D127X06R3C2T	120	C	20	0.085	2.76	2.28	1.88	500	1.07
74-594D227X06R3D2T	220	D	20	0.065	3.90	3.23	2.85	500	1.52
74-594D227X96R3C2T	220	C	10	0.08	3.90	3.67	2.43	500	1.70
74-594D227X96R3D2T	220	D	10	0.065	3.90	3.23	2.85	500	1.52
74-594D337X06R3D2T	330	D	20	0.06	4.63	4.11	3.72	500	1.86
74-594D477X96R3D2T	470	D	10	0.06	4.63	4.11	3.72	500	1.86
74-594D108X06R3R2T	1000	R	20	0.03	8.69	8.12	7.00	600	3.85
74-594D108X96R3R2T	1000	R	10	0.03	8.69	8.12	7.00	600	3.85
10 Volt									
74-594D476X0010B2T	47	B	20	0.4	1.66	1.39	1.06	2000	.86
74-594D686X0010C2T	68	C	20	0.1	2.76	2.28	1.88	500	1.07
74-594D686X9010C2T	68	C	10	0.1	2.76	2.28	1.88	500	1.07
74-594D107X0010C2T	100	C	20	0.095	2.76	2.28	1.88	500	1.07
74-594D157X0010C2T	150	C	20	0.09	3.90	3.67	2.43	500	1.70
74-594D157X0010D2T	150	D	20	0.075	3.90	3.23	2.85	500	1.52
74-594D157X9010D2T	150	D	10	0.075	3.90	3.23	2.85	500	1.52
74-594D227X0010D2T	220	D	20	0.065	4.63	4.11	3.72	500	1.86
74-594D227X9010D2T	220	D	10	0.065	4.63	4.11	3.72	500	1.86
74-594D337X0010R2T	330	R	20	0.045	7.04	6.61	5.86	600	2.98
74-594D337X9010R2T	330	R	10	0.045	7.04	6.61	5.86	600	2.98
16 Volt									
74-594D336X9016C2T	33	C	10	0.15	2.76	2.28	1.88	500	1.07
74-594D476X0016C2T	47	C	20	0.11	2.76	2.28	1.88	500	1.07
74-594D476X9016C2T	47	C	10	0.11	2.76	2.28	1.88	500	1.07
74-594D107X0016C2T	100	C	20	0.08	3.90	3.67	2.43	500	1.70
74-594D107X0016D2T	100	D	20	0.075	3.90	3.23	2.85	500	1.52
74-594D107X9016C2T	100	C	10	0.08	3.90	3.67	2.43	500	1.70
74-594D107X9016D2T	100	D	10	0.075	3.90	3.23	2.85	500	1.52
74-594D187X0016R2T	180	R	20	0.055	7.04	6.61	5.86	600	2.98
74-594D227X0016R2T	220	R	20	0.055	7.92	7.41	6.38	600	3.51
74-594D337X0016R2T	330	R	20	0.055	7.92	7.41	6.38	600	3.51
20 Volt									
74-594D226X0020C2T	22	C	20	0.15	2.76	2.28	1.88	500	1.07
74-594D226X9020C2T	22	C	10	0.15	2.76	2.28	1.88	500	1.07
74-594D476X0020D2T	47	D	20	0.095	3.90	3.23	2.85	500	1.52
74-594D476X9020D2T	47	D	10	0.095	3.90	3.23	2.85	500	1.52
74-594D107X0020D2T	100	D	20	0.085	4.63	4.11	3.72	500	1.86
74-594D107X9020D2T	100	D	10	0.085	4.63	4.11	3.72	500	1.86
74-594D127X0020R2T	120	R	20	0.08	7.04	6.61	5.86	600	2.98
25 Volt									
74-594D156X0025C2T	15	C	20	0.22	2.76	2.28	1.88	500	1.07
74-594D336X0025D2T	33	D	20	0.13	3.90	3.23	2.85	500	1.52
74-594D336X9025D2T	33	D	10	0.13	3.90	3.23	2.85	500	1.52
74-594D686X0025R2T	68	R	20	0.095	7.04	6.61	5.86	600	2.98
74-594D107X0025R2T	100	R	20	0.09	7.92	7.41	6.38	600	3.51
74-594D107X9025R2T	100	R	10	0.09	7.92	7.41	6.38	600	3.51
35 Volt									
74-594D156X0035D2T	15	D	20	0.27	3.90	3.23	2.85	500	1.52
74-594D336X0035R2T	33	R	20	0.2	7.04	6.61	5.86	600	2.98
74-594D336X9035R2T	33	R	10	0.2	7.04	6.61	5.86	600	2.98
74-594D476X9035R2T	47	R	10	0.2	7.92	7.41	6.38	600	3.51
50 Volt									
74-594D475X0050C2T	4.7	C	20	1	2.72	2.50	1.73	500	1.66
74-594D685X0050D2T	6.8	D	20	0.45	3.73	3.48	2.68	500	2.19
74-594D156X0050R2T	15	R	20	0.35	7.74	7.50	6.45	600	3.28
74-594D156X9050R2T	15	R	10	0.35	7.74	7.50	6.45	600	3.28

MOUSER STOCK NO. Mfr. Part Number	Value (µF)	Tol.± %	Case Code	ESR (Ω)	Price Each			Reel Qty.	Price Per Piece
					1	10	100		
6.3 Volt									
74-595D226X96R3B2T	22	10	B	0.57	1.69	1.48	1.20	2000	.58
74-595D107X06R3C2T	100	20	C	0.2	2.08	1.90	1.47	500	1.23
10 Volt									
74-595D106X0010A2T	10	20	A	1.9	1.28	1.15	.907	2000	.482
74-595D106X9010A2T	10	10	A	1.9	1.28	1.15	.907	2000	.482
74-595D476X0010B2T	47	20	B	0.65	1.72	1.59	1.10	2000	.90
74-595D686X0010C2T	68	20	C	0.24	2.08	1.90	1.47	500	1.23
74-595D157X0010D2T	150	20	D	0.14	3.52	3.25	2.57	500	1.37
74-595D157X9010D2T	150	10	D	0.14	3.52	3.25	2.57	500	1.37
74-595D337X0010R2T	330	20	R	0.13	5.64	5.35	4.69	600	3.48
74-595D337X9010R2T	330	10	R	0.13	5.64	5.35	4.69	600	3.48
74-595D477X9010R2T	470	10	R	0.12	6.77	6.50	5.64	600	2.87
16 Volt									
74-595D475X0016A2T	4.7	20	A	2.9	1.28	1.15	.907	2000	.482
74-595D106X9016A2T	10	10	A	2.5	1.38	1.22	.89	2000	.73
74-595D106X9016B2T	10	10	B	0.76	1.69	1.48	1.20	2000	.58
74-595D336X0016B2T	33	20	B	0.72	1.72	1.59	1.10	2000	.90
74-595D476X9016C2T	47	10	C	0.28	2.08	1.90	1.47	500	1.23
74-595D686X0016D2T	68	20	D	0.14	3.52	3.25	2.57	500	1.37
74-595D107X0016C2T	100	20	C	0.27	2.65	2.40	1.69	500	1.62
74-595D107X0016D2T	100	20	D	0.14	3.52	3.25	2.57	500	1.37
74-595D157X9016R2T	150	10	R	0.13	5.64	5.35	4.69	600	3.48
74-595D227X0016R2T	220	20	R	0.12	6.77	6.50	5.64	600	2.87
20 Volt									
74-595D685X0020B2T	6.8	20	B	0.95	1.69	1.48	1.20	2000	.58
74-595D226X9020C2T	22	10	C	0.38	2.08	1.90	1.47	500	1.23
74-595D476X0020D2T	47	20	D	0.19	3.52	3.25	2.57	500	1.37
74-595D476X9020D2T	47	10	D	0.19	3.52	3.25	2.57	500	1.37
74-595D107X0020D2T	100	20	D	0.18	3.77	3.50	2.41	500	2.30
74-595D107X0020R2T	100	20	R	0.14	5.64	5.35	4.69	600	3.48
74-595D107X9020R2T	100	10	R	0.14	5.64	5.35	4.69	600	3.48
74-595D127X0020R2T	120	20	R	0.14	5.64	5.35	4.69	600	3.48
74-595D157X0020R2T	150	20	R	0.14	6.77	6.50	5.64	600	2.87
74-595D157X9020R2T	150	10	R	0.14	6.77	6.50	5.64	600	2.87
25 Volt									
74-595D106X9025B2T	10	10	B	1.5	1.72	1.59	1.10	2000	.90
74-595D106X9025C2T	10	10	C	0.57	2.08	1.90	1.47	500	1.23
74-595D336X0025D2T	33	20	D	0.27	3.52	3.25	2.57	500	1.37
74-595D336X9025D2T	33	10	D	0.27	3.52	3.25	2.57	500	1.37
74-595D476X9025R2T	47	10	R	0.2	5.64	5.35	4.69	600	3.48
74-595D686X0025R2T	68	20	R	0.2	5.64	5.35	4.69	600	3.48
74-595D686X9025R2T	68	10	R	0.2	5.64	5.35	4.69	600	3.48
74-595D107X0025R2T	100	20	R	0.2	6.77	6.50	5.64	600	2.87
74-595D107X9025R2T	100	10	R	0.2	6.77	6.50	5.64	600	2.87
35 Volt									
74-595D105X9035A2T	1	10	A	4.1	1.28	1.15	.907	2000	.482
74-595D475X9035B2T	4.7	10	B	2.2	1.72	1.59	1.10	2000	.90
74-595D106X0035D2T	10	20	D	0.43	3.52	3.25	2.57	500	1.37
74-595D106X9035D2T	10	10	D	0.43	3.52	3.25	2.57	500	1.37
74-595D226X9035R2T	22	10	R	0.28	5.64	5.35	4.69	600	