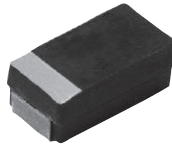


VISHAY/SPRAGUE Molded Solid Tantalum Chip Capacitors

893D SERIES: FUSED LOW ESR

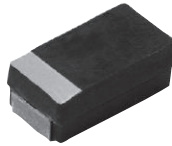


• Operating temperature: -55°C to 85°C (125°C with voltage derating)

For quantities greater than listed, call for quote.

MOUSER STOCK NO.		Value (µF)	Case Code	Tol. %	ESR (Ω)	Price Each			Reel Qty.	Price Per Piece
Mfr.	Mfr. Part No.					1	10	100		
10 Volt										
74	893D226X9010C2TE3	22	C	10	1.4	2.21	1.83	1.62	500	.864
74	893D107X9010D2TE3	100	D	10	0.6	4.17	3.70	3.36	500	1.68
74	893D157X9010E2TE3	150	E	10	0.6	7.26	6.82	6.05	400	3.30
74	893D227X9010E2TE3	220	E	10	0.5	7.26	6.82	6.05	400	3.30
16 Volt										
74	893D106X9016C2TE3	10	C	10	1.8	2.21	1.83	1.62	500	.864
74	893D336X9016D2TE3	33	D	10	0.7	3.90	3.23	2.85	500	1.52
74	893D476X9016D2TE3	47	D	10	0.7	3.90	3.23	2.85	500	1.52
74	893D107X9016E2TE3	100	E	10	0.6	7.26	6.82	6.05	400	3.30
20 Volt										
74	893D106X9020C2TE3	10	C	10	1.6	2.21	1.83	1.62	500	.864
74	893D226X9020D2TE3	22	D	10	0.7	3.90	3.23	2.85	500	1.52
25 Volt										
74	893D475X9025C2TE3	4.7	C	10	1.9	2.21	1.83	1.62	500	.864
74	893D106X9025D2TE3	10	D	10	1	3.90	3.23	2.85	500	1.52
74	893D226X9025E2TE3	22	E	10	0.7	7.26	6.82	6.05	400	3.30
35 Volt										
74	893D685X9035D2TE3	6.8	D	10	1	3.90	3.23	2.85	500	1.52
74	893D106X9035D2TE3	10	D	10	0.8	3.90	3.23	2.85	500	1.52
74	893D226X9035E2TE3	22	E	10	0.6	7.26	6.82	6.05	400	3.30
50 Volt										
74	893D105X9050C2TE3	1	C	10	4.4	2.77	2.29	2.02	500	1.08
74	893D475X9050D2TE3	4.7	D	10	1.7	4.28	3.80	3.44	500	1.72
74	893D685X9050E2TE3	6.8	E	10	0.9	8.53	7.97	6.87	400	3.65

TF3 SERIES: FUSED LOW ESR

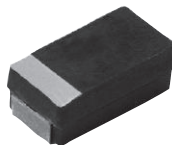


• Operating temperature: -55°C to 85°C (125°C with voltage derating)

For quantities greater than listed, call for quote.

MOUSER STOCK NO.		Value (µF)	Case Code	Tol. %	ESR (Ω)	Price Each			Reel Qty.	Price Per Piece
Mfr.	Mfr. Part No.					1	10	100		
6 Volt										
74	TF3D476K6R3C0450	47	D	10	0.45	5.19	4.27	3.26	500	1.96
10 Volt										
74	TF3C156K010C1800	15	C	10	1.8	2.53	2.08	1.58	500	.95
16 Volt										
74	TF3C106K016C0600	10	C	10	0.6	1.42	1.20	.98	500	.87
74	TF3D686K016C0300	68	D	10	0.3	4.86	4.13	3.05	500	1.84
20 Volt										
74	TF3D336K020C0350	33	D	10	0.35	6.40	5.26	4.02	500	2.42
35 Volt										
74	TF3D156K035C0500	15	D	10	0.5	7.69	6.32	4.83	500	2.91
50 Volt										
74	TF3C105K050C2700	1	C	10	2.7	2.57	2.12	1.62	500	.97

TH3 SERIES: HIGH TEMPERATURE, AUTOMOTIVE GRADE



• Operating temperature: -55°C to 85°C (150°C with voltage derating)
• AEC-Q200 Qualified

For quantities greater than listed, call for quote.

MOUSER STOCK NO.		Value (µF)	Case Code	Tol. %	ESR (Ω)	Price Each			Reel Qty.	Price Per Piece
Mfr.	Mfr. Part No.					1	10	100		
16 Volt										
74	TH3A225K016C4300	2.2	A	10	4.3	.85	.76	.42	2000	.20
74	TH3D476K016C0600	47	D	10	0.6	1.22	1.04	.85	500	.64
74	TH3E107K016C0600	100	E	10	0.6	2.13	1.76	1.55	400	.934
25 Volt										
74	TH3B225K025C3000	2.2	B	10	3	.85	.76	.42	2000	.20
74	TH3C106K025C1100	10	C	10	1.1	.63	.53	.44	500	.274
74	TH3D336K025C0500	33	D	10	0.5	2.12	1.73	1.39	500	.721
35 Volt										
74	TH3B105K035C4400	1	B	10	4.4	.98	.82	.51	2000	.195
74	TH3D106K035C0700	10	D	10	0.7	1.57	1.28	1.03	500	.533
74	TH3E226K035C0500	22	E	10	0.5	1.66	1.41	1.15	400	.989
74	TH3D226K035C0300	22	D	10	0.3	1.60	1.30	1.06	500	.70

TH4 SERIES: HIGH TEMPERATURE, AUTOMOTIVE GRADE

• Operating Temperature: -55°C to 175°C
• AEC-Q200 Qualified

For quantities greater than listed, call for quote.

MOUSER STOCK NO.		Value (µF)	Case Code	Tol. %	ESR (Ω)	Price Each			Reel Qty.	Price Per Piece
Mfr.	Mfr. Part No.					1	10	100		
6 Volt										
74	TH4B106K6R3C1800	10	B	10	1.8	1.43	1.28	.697	2000	.356
74	TH4B226K6R3C1500	22	B	10	1.5	1.63	1.46	.798	2000	.393
74	TH4C476K6R3C0800	47	C	10	0.8	1.11	.90	.73	500	.48
10 Volt										
74	TH4B106K010C1800	10	B	10	1.8	1.43	1.28	.697	2000	.356
74	TH4B226K010C1600	22	B	10	1.6	1.63	1.46	.798	2000	.393
74	TH4C226K010C1400	22	C	10	1.4	.88	.72	.58	500	.32
74	TH4C476K010C0500	47	C	10	0.5	1.11	.90	.73	500	.48
16 Volt										
74	TH4B106K016C2000	10	B	10	2.0	1.43	1.28	.697	2000	.356
74	TH4B226K016C1900	22	B	10	1.9	1.63	1.46	.798	2000	.393
74	TH4C226K016C1400	22	C	10	1.4	.94	.76	.62	500	.34
74	TH4C476K016C0800	47	C	10	0.8	1.11	.90	.73	500	.48

TH5 SERIES: HIGH TEMPERATURE

• Operating Temperature: -55°C to 200°C

For quantities greater than listed, call for quote.

MOUSER STOCK NO.		Value (µF)	Case Code	Tol. %	ESR (Ω)	Price Each			Reel Qty.	Price Per Piece
Mfr.	Mfr. Part No.					1	10	100		
21 Volt										
74	TH5E106K021A1000	10	E	10	1	26.50	23.85	16.96	100	16.96
24 Volt										
74	TH5E475K024A2500	1.7	E	10	2.5	31.25	28.13	20.00	100	20.00

T83 SERIES: HI-REL COTS STANDARD

• Operating temperature: -55°C to 85°C (125°C with voltage derating)

For quantities greater than listed, call for quote.

MOUSER STOCK NO.		Value (µF)	Case Code	Tol. %	ESR (Ω)	Price Each			Reel Qty.	Price Per Piece
Mfr.	Mfr. Part No.					1	10	100		
6 Volt										
74	T83B476K6R3EZLL	47	B	10	0.55	3.86	3.62	3.22	2000	1.52
74	T83B476K6R3EBZLL	47	B	10	0.55	11.45	11.00	9.82	2000	4.65
74	T83C227K6R3EZLL	220	C	10	0.3	5.32	5.00	4.58	500	2.75
10 Volt										
74	T83A475K010EZLL	4.7	A	10	3	3.30	3.09	2.75	2000	1.30
74	T83B336K010EZLL	33	B	10	0.6	3.86	3.62	3.22	2000	1.52
74	T83B476K010EZLL	47	B	10	0.6	4.60	4.31	3.83	2000	1.81
74	T83C107K010EZLL	100	C	10	0.9	4.80	4.51	4.13	500	2.48
74	T83D107K010EZLL	100	D	10	0.1	5.67	5.33	4.88	500	2.93
74	T83E227K010EZLL	220	E	10	0.1	6.18	5.82	5.10	400	2.91
74	T83E337K010EZLL	330	E	10	0.5	5.84	5.51	4.82	400	2.75
16 Volt										
74	T83B106K016EZLL	10	B	10	0.8	3.86	3.62	3.22	2000	1.52
74	T83C106K016EBZS	10	C	10	1.8	10.87	10.21	9.36	500	5.61
74	T83B336K016EZLL	33	B	10	0.5	4.60	4.31	3.83	2000	1.81
74	T83D476K016EZLL	47	D	10	0.15	5.67	5.33	4.88	500	2.93
74	T83D476K016EBZL	47	D	10	0.15	12.01	11.53	10.30	500	6.16
74	T83E107K016EZLL	100	E	10	0.6	5.51	5.20	4.55	400	2.60
20 Volt										
74	T83B106K020EZLL	10	B	10	1	4.60	4.31	3.83	2000	1.81
74	T83D476K020EZLL	47	D	10	0.7	5.32	5.00	4.58	500	2.75
25 Volt										
74	T83A225K025EZLL	2.2	A	10	4	3.30	3.09	2.75	2000	1.30
74	T83B475K025EBZLL	4.7	B	10	1.5	3.86	3.62	3.22	2000	1.52
74	T83C106K025EZLL	10	C	10	0.45	4.80	4.51	4.13	500	2.48
74	T83E336K025EZLL	33	E	10	0.2	6.18	5.82	5.10	400	2.91
74	T83D476K025EBZL	47	D	10	0.35	12.01	11.53	10.30	500	6.16
35 Volt										
74	T83A105K035EZLL	1	A	10	6	3.66	3.43	3.05	2000	1.44
74	T83B335K035EZLL	3.3	B	10	1.5	3.86	3.62	3.22	2000	1.52
74	T83C475K035EZLL	4.7	C	10	0.6	4.80	4.51	4.13	500	2.48
74	T83C106K035EZLL	10	C	10	0.85	5.32	5.00	4.58	500	2.75
50 Volt										
74	T83D156K035EZLL	15	D	10	0.3	5.67	5.33	4.88	500	2.93
74	T83D226K035EZLL	22	D	10	0.4	6.22	5.84	5.36	500	3.21
74	T83E226K035EZLL	22	E	10	0.3	6.18	5.82	5.10	400	2.91
63 Volt										
74	T83D475K063EZLL	4.7	D	10	0.7	7.85	7.37	6.54	500	3.33
74	T83E106K063EZLL	10	E	10	0.6	8.43	7.88	6.80	400	3.94

TP3 SERIES: HIGH PERFORMANCE, AUTOM