

# VISHAY/SPRAGUE Solid Tantalum Chip Capacitors

RoHS Compliant This product is RoHS compliant.

## 592D SERIES: TANTAMOUNT®, LOW PROFILE, CONFORMAL COATED, MAXIMUM CV

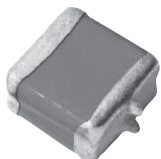
\* Operating temperature: -55°C to 85°C (125°C with voltage derating)



For quantities greater than listed, call for quote.

MOUSER STOCK NO.	Vishay Part No.	Value (uF)	Case Code	Tol. ± %	ESR (Ω)	Price Each			Reel Quantity	Price Per Piece
						1	10	50		
<b>6.3 Volt</b>										
74-592D226X96R3B2T	592D226X96R3B2T15H	22	B	10	1.5	1.39	1.35	1.21	2000	.72
74-592D477X06R3C2T16	592D477X06R3C2T16H	470	C	20	0.200	2.42	2.04	1.86	1000	1.41
74-592D477X06R3C2T20	592D477X06R3C2T20H	470	C	20	0.100	2.65	2.40	2.20	1000	1.47
74-592D108X06R3R2T20	592D108X06R3R2T20H	1000	R	20	0.040	4.39	3.90	3.75	1000	1.64
74-592D108X96R3R2T20	592D108X96R3R2T20H	1000	R	10	0.200	4.39	3.90	3.75	1000	1.64
74-592D108X06R3X2T20	592D108X06R3X2T20H	1000	X	20	0.040	8.00	7.51	7.00	500	3.39
74-592D158X06R3R2T20	592D158X06R3R2T20H	1500	R	20	0.090	5.44	5.10	4.88	1000	2.14
74-592D228X96R3X2T	592D228X96R3X2T20H	2200	X	10	0.055	8.00	7.51	7.00	500	3.39
<b>16 Volt</b>										
74-592D685X0016B2T	592D685X0016B2T15H	6.8	B	20	1.8	1.21	1.18	1.07	2000	.77
74-592D106X9016C2T	592D106X9016C2T15H	10	C	10	1	1.62	1.56	1.37	1000	1.03
74-592D476X0016B2T20	592D476X0016B2T20H	47	B	20	0.72	1.25	1.05	.91	2000	.65
<b>20 Volt</b>										
74-592D156X9020C2T	592D156X9020C2T15H	15	C	10	0.60	1.66	1.40	1.35	1000	1.21
<b>25 Volt</b>										
74-592D106X0025R2T	592D106X0025R2T15H	10	R	20	0.48	2.72	2.29	2.21	1000	1.99
<b>35 Volt</b>										
74-592D105X9035A2T	592D105X9035A2T15H	1	A	10	10	.87	.73	.71	2500	.60

## 597D SERIES: TANTAMOUNT® ULTRA-LOW ESR, CONFORMAL COATED, MAXIMUM CV



\* Operating Temperature: -55°C to 85°C (125°C with voltage derating)

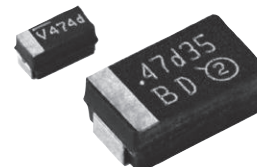
For quantities greater than listed, call for quote.

MOUSER STOCK NO.	Mfr.	Mfr. Part No.	Value (uF)	Case Code	Tol. ± %	ESR (Ω)	Price Each			Reel Qty.	Price Per Piece
							1	10	100		
<b>4 Volt</b>											
71-597D477X9004V2T		470	V	10	0.06	5.80	5.40	4.83	1000	2.28	
71-597D108X9004E2T		1000	E	10	0.02	6.38	6.08	5.31	500	2.70	
<b>6.3 Volt</b>											
71-597D337X96R3V2T		330	V	10	0.056	3.54	2.76	2.59	1000	1.20	
71-597D477X96R3E2T		470	E	10	0.03	6.79	6.38	5.65	500	2.97	
71-597D687X06R3E2T		680	E	20	0.025	7.81	6.61	4.81	500	4.33	
71-597D687X96R3E2T		680	E	10	0.025	7.93	7.36	6.60	500	3.36	
71-597D108X96R3R2T		1000	R	10	0.02	6.48	6.08	5.40	300	2.94	
<b>10 Volt</b>											
71-597D337X0010E2T		330	E	20	0.035	5.58	5.36	4.95	500	2.52	
71-597D337X9010E2T		330	E	10	0.035	5.58	5.36	4.95	500	2.52	
71-597D477X0010E2T		470	E	20	0.028	6.38	6.08	5.31	500	2.70	
71-597D477X9010E2T		470	E	10	0.028	6.38	6.08	5.31	500	2.70	
71-597D687X9010R2T		680	R	10	0.028	7.61	7.45	6.62	300	5.96	
71-597D108X9010F2T		1000	F	10	0.12	7.55	6.74	5.39	250	4.86	
<b>16 Volt</b>											
71-597D227X9016E2T		220	E	10	0.06	5.90	5.32	4.91	500	2.50	
<b>20 Volt</b>											
71-597D227X0020R2T		220	R	20	0.08	6.98	6.54	6.26	300	5.56	
71-597D227X9020R2T		220	R	10	0.08	6.55	6.39	5.45	300	3.40	
71-597D337X0020H2T		330	H	20	0.1	7.90	6.37	5.01	200	4.74	
<b>25 Volt</b>											
71-597D157X9025F2T		150	F	10	0.08	9.13	9.02	7.36	250	4.27	
71-597D227X0025M2T		220	M	20	0.1	9.97	7.96	6.31	200	5.98	
<b>35 Volt</b>											
71-597D476X9035R2T		47	R	10	0.08	7.25	6.69	6.04	300	3.29	
71-597D107X0035F2T		100	F	20	0.1	9.13	9.02	7.36	250	4.27	
<b>50 Volt</b>											
71-597D156X9050E2T		15	E	10	0.3	7.41	7.00	6.17	500	2.91	
71-597D156X9050R2T		15	R	10	0.25	7.41	7.00	6.17	300	3.36	
71-597D226X0050R2T		22	R	20	0.17	8.11	6.86	5.61	300	4.99	
71-597D226X9050R2T		22	R	10	0.17	8.25	7.46	6.87	300	3.74	
71-597D336X0050F2T		33	F	20	0.15	10.39	9.90	8.37	250	4.85	
71-597D336X9050F2T		33	F	10	0.15	10.39	9.90	8.37	250	4.85	
71-597D476X0050Z2T		47	Z	20	0.145	10.96	9.27	6.74	250	6.07	
71-597D476X9050Z2T		47	Z	10	0.145	10.13	9.47	6.75	250	4.73	
<b>63 Volt</b>											
71-597D226X0063F2T		22	F	20	0.2	10.31	10.21	8.31	250	4.82	
71-597D226X9063F2T		22	F	10	0.2	10.31	10.21	8.31	250	4.82	
<b>75 Volt</b>											
71-597D106X9075R2T		10	R	10	0.5	15.47	14.47	12.47	300	7.23	

## TL3 SERIES: TANTAMOUNT® MOLDED CASE, LOW DCL



\* Operating Temperature: -55°C to +125°C



For quantities greater than listed, call for quote.

MOUSER STOCK NO.	Mfr.	Mfr. Part No.	Value (uF)	Case Code	Tol. ± %	ESR (Ω)	Price Each			Reel Qty.	Price Per Piece
							1	10	100		
<b>10 Volt</b>											
74-TL3A475K010C3000		4.7	A	10	3	.77	.69	.47	2000	.411	
74-TL3A106K010C2000		10	A	10	2	.81	.72	.61	2000	.43	
74-TL3C107K010C0200		100	C	10	0.2	1.56	1.39	1.18	500	.90	
74-TL3D107K010C0100		100	D	10	0.1	2.97	2.68	2.27	500	1.58	
74-TL3D227K010C0360		220	D	10	0.36	2.83	2.53	2.14	500	1.49	
<b>16 Volt</b>											
74-TL3A475K016C3500		4.7	A	10	3.5	.86	.77	.46	2000	.41	
74-TL3A106K016C1700		10	A	10	1.7	.78	.70	.48	2000	.415	
74-TL3B106K016C0800		10	B	10	0.8	1.46	1.30	.95	2000	.805	
74-TL3C106K016C0450		10	C	10	0.45	1.12	1.01	.93	500	.821	
74-TL3C476K016C0300		47	C	10	0.3	1.50	1.34	1.14	500	.87	
74-TL3D476K016C0150		47	D	10	0.15	2.66	2.37	2.01	500	1.40	
74-TL3D107K016C0125		100	D	10	0.125	3.41	3.04	2.58	500	1.80	
<b>20 Volt</b>											
74-TL3B106K020C1000		10	B	10	1	1.12	.98	.72	2000	.618	
74-TL3D476K020C0200		47	D	10	0.2	2.49	2.23	1.89	500	1.32	
74-TL3E107K020C0150		100	E	10	0.15	6.07	5.42	4.60	400	3.20	
<b>25 Volt</b>											
74-TL3C106K025C0450		10	C	10	0.45	2.31	2.06	1.75	500	1.34	
74-TL3D226K025C0200		22	D	10	0.2	2.76	2.46	2.09	500	1.46	
<b>35 Volt</b>											
74-TL3A105K035C6000		1	A	10	6	.92	.82	.60	2000	.49	
74-TL3B105K035C2000		1	B	10	2	1.25	1.11	.81	2000	.70	
74-TL3D106K035C0300		10	D	10	0.3	3.52	3.14	2.66	500	1.86	
74-TL3D226K035C0400		22	D	10	0.4	4.14	3.69	3.13	500	2.18	
74-TL3E226K035C0300		22	E	10	0.3	3.86	3.44	2.92	400	2.04	
<b>50 Volt</b>											
74-TL3D475K050C0600		4.7	D	10	0.6	3.46	3.09	2.62	500	1.83	
74-TL3E106K050C0550		10	E	10	0.55	5.30	4.73	4.01	400	2.79	