

# VISHAY/SPRAGUE Solid Tantalum Chip Capacitors

## 592W SERIES: CONFORMAL COATED PULSE CAPACITORS FOR WIRELESS MODEMS

• Operating temperature: -55°C to 85°C (125°C with voltage derating)



For quantities greater than listed, call for quote.

MOUSER STOCK NO.		Value (µF)	Case Code	Tol. %	ESR (Ω)	Price Each			Reel Qty.	Price Per Piece
Mfr.	Mfr. Part No.					1	10	100		
6.3 Volt										
74	592W228X06R3X2T16	2200	X	20	0.070	6.55	5.52	5.00	500	4.78
8.2 Volt										
74	592W477X08R2C2T20	470	C	20	0.100	2.16	1.82	1.64	1000	1.41
10 Volt										
74	592W337X0010C2T20	330	C	20	0.100	2.16	1.82	1.64	1000	1.41
74	592W757X0010M2T20	750	M	20	0.100	3.64	3.07	2.77	1000	2.38

## T95 SERIES: HI-REL COTS, CONFORMAL COATED CASE

• Operating temperature: -55°C to 85°C (125°C with voltage derating)

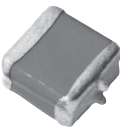


For quantities greater than listed, call for quote.

MOUSER STOCK NO.		Value (µF)	Case Code	Tol. %	ESR (Ω)	Price Each			Reel Qty.	Price Per Piece
Mfr.	Mfr. Part No.					1	10	25		
10 Volt										
74	T95R107K010LSAL	100	R	10	0.075	11.35	10.61	6.48	300	4.97
74	T95R337K010EABS	330	R	10	0.13	16.82	15.72	13.57	600	7.68
16 Volt										
74	T95X106K016LSAL	10	X	10	1.5	5.21	4.89	4.34	1000	2.22
74	T95R686K016LSAL	68	R	10	0.095	11.35	10.61	6.48	300	4.97
74	T95C107K016LSAL	100	C	10	0.089	6.73	6.32	5.61	250	2.65
74	T95D157K016LSAL	150	D	10	0.085	7.00	6.57	6.33	250	2.89
74	T95R227K016LSAL	220	R	10	0.055	10.88	10.17	6.21	300	4.76
74	T95R337K016LSAL	330	R	10	0.055	10.88	10.17	6.21	300	4.76
20 Volt										
74	T95R157K020LSAL	150	R	10	0.075	10.88	10.17	6.21	300	4.76
25 Volt										
74	T95D336K025LSAL	33	D	10	0.13	6.47	6.07	5.71	250	2.68
74	T95R686K025LABS	68	R	10	0.2	16.84	15.74	10.05	300	7.59
74	T95R107M025ESS	100	R	20	0.2	9.79	9.15	7.89	600	4.47
35 Volt										
74	T95R336K035LABS	33	R	10	0.28	16.84	15.74	10.05	300	7.59
50 Volt										
74	T95D685K050LSAL	6.8	D	10	0.45	6.73	6.32	5.90	250	3.40
74	T95R106K050LSAL	10	R	10	0.5	17.77	16.45	12.50	300	8.04
74	T95R156K050LSAL	15	R	10	0.35	11.53	10.78	7.00	300	4.54
74	T95R226K050EABS	22	R	10	0.39	18.35	17.15	14.80	600	8.37
74	T95R226K050LSAL	22	R	10	0.3	12.71	11.28	7.38	300	5.20
74	T95R226M050ESBL	22	R	20	0.3	17.98	16.81	15.27	600	8.27

## T97 SERIES: HI-REL COTS, CONFORMAL COATED CASE ULTRA-LOW ESR

• Operating temperature: -55°C to 85°C (125°C with voltage derating)

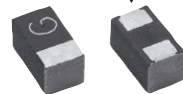


For quantities greater than listed, call for quote.

MOUSER STOCK NO.		Value (µF)	Case Code	Tol. %	ESR (Ω)	Price Each			Reel Qty.	Price Per Piece
Mfr.	Mfr. Part No.					1	10	25		
6.3 Volt										
74	T97R108K6R3HSA	1000	R	10	0.02	13.75	12.65	12.38	150	9.90
20 Volt										
74	T97E337K010EAA	330	E	10	0.035	13.09	12.25	11.40	500	7.84
74	T97E337K010LSA	330	E	10	0.035	11.69	11.12	9.60	250	5.50
74	T97R687K010LSA	680	R	10	0.028	16.61	15.37	13.64	150	8.84
74	T97F108K010LSA	1000	F	10	0.12	10.79	9.99	8.10	125	7.33
25 Volt										
74	T97R227K020LSA	220	R	10	0.08	14.72	13.76	8.60	150	6.88
74	T97H337K020HSA	330	H	10	0.1	11.48	10.74	8.34	100	5.37
74	T97H337K020HSB	330	H	10	0.1	13.57	12.70	9.86	100	6.34
35 Volt										
74	T97F157K025LSA	150	F	10	0.08	14.88	13.92	10.26	125	7.68
50 Volt										
74	T97E156K050EBB	15	E	10	0.3	18.55	17.35	16.16	500	11.11
74	T97E156K050LSA	15	E	10	0.3	10.42	9.01	8.37	250	6.59
74	T97R226K050LSA	22	R	10	0.17	17.00	15.74	9.44	150	8.81
74	T97F336K050CAA	33	F	10	0.15	16.42	15.36	11.92	250	11.33
74	T97F336K050EAA	33	F	10	0.15	18.03	16.87	13.09	250	8.42
74	T97F336K050ESA	33	F	10	0.15	17.59	16.47	12.77	250	12.16
74	T97Z476K050ESB	47	Z	10	0.145	20.73	19.39	15.06	250	14.31
74	T97Z476K050HSA	47	Z	10	0.145	24.63	22.66	22.16	125	19.70
74	T97Z476K050LSA	47	Z	10	0.145	27.32	26.22	20.00	125	15.71
63 Volt										
74	T97F226K063LSA	22	F	10	0.2	24.38	22.57	19.40	125	12.99
75 Volt										
74	T97R106K075LSA	10	R	10	0.5	16.23	15.02	13.02	150	9.01

## 298W SERIES: HIGH CV LEAD FRAMELESS MOLDED

• Operating temperature: -55°C to 85°C (125°C with voltage derating)

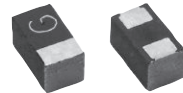


For quantities greater than listed, call for quote.

MOUSER STOCK NO.		Value (µF)	Case Code	Tol. %	ESR (Ω)	Price Each			Reel Qty.	Price Per Piece
Mfr.	Mfr. Part No.					1	10	100		
4 Volt										
74	298W227X0004Q2T	220	Q	20	15	2.27	1.86	1.49	2500	.61
6.3 Volt										
74	298W106X06R3K2T	10	K	20	15	2.70	2.21	1.77	5000	.73
10 Volt										
74	298W107X0010Q2T	100	Q	20	15	2.27	1.64	1.49	2500	.61

## 298D SERIES: LEAD FRAMELESS MOLDED

• Operating temperature: -55°C to 85°C (125°C with voltage derating)

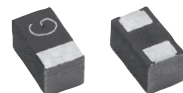


For quantities greater than listed, call for quote.

MOUSER STOCK NO.		Value (µF)	Case Code	Tol. %	ESR (Ω)	Price Each			Reel Qty.	Price Per Piece
Mfr.	Mfr. Part No.					1	10	100		
4 Volt										
74	298D476X0004M2T	47	M	20	7.5	1.55	1.42	1.09	4000	.51
6.3 Volt										
71	298D475X06R3M2T	4.7	M	20	3	1.02	.96	.725	4000	.338
71	298D106X06R3M2T	10	M	20	5	1.21	1.02	.825	4000	.338
74	298D226X06R3M2T	22	M	20	5.5	1.55	1.42	1.09	4000	.51
74	298D336X06R3M2T	33	M	20	7.5	1.55	1.42	1.09	4000	.51
10 Volt										
71	298D475X0010M2T	4.7	M	20	5	1.05	.94	.725	4000	.338
74	298D475X0010M2T	4.7	M	10	5	1.05	.94	.725	4000	.338
71	298D106X0010M2T	10	M	20	7.5	1.55	1.42	1.09	4000	.51
74	298D156X0010M2T	15	M	20	7.5	1.55	1.42	1.09	4000	.51
74	298D476X0010P2T	47	P	20	3	2.05	1.68	1.35	3000	.574
16 Volt										
71	298D105X0016M2T	1	M	20	20	1.21	1.02	.825	4000	.338
74	298D105X9016M2T	1	M	10	20	1.21	1.02	.825	4000	.338
74	298D225X0016M2T	2.2	M	20	12	1.05	.94	.725	4000	.338
25 Volt										
74	298D105X0025M2T	1	M	20	10	1.55	1.42	1.09	4000	.51

## TM8 SERIES: HI-REL, LOW DCL, LEAD FRAMELESS MOLDED

• Operating temperature: -55°C to 85°C (125°C with voltage derating)

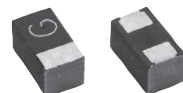


For quantities greater than listed, call for quote.

MOUSER STOCK NO.		Value (µF)	Case Code	Tol. %	Max DCL (µA)	Price Each			Reel Qty.	Price Per Piece
Mfr.	Mfr. Part No.					1	10	100		
6.3 Volt										
74	TM8M106K6R3UBA	10	M	10	0.32	13.95	13.05	11.25	300	6.52
74	TM8M156K6R3UBA	15	M	10	0.47	13.95	13.05	11.25	300	6.52
10 Volt										
74	TM8M105K010UBA	1	M	10	0.20	13.95	13.05	11.25	300	6.52
74	TM8M475K010UBA	4.7	M	10	0.24	13.95	13.05	11.25	300	6.52
74	TM8L755K010UBA	7.5	L	10	0.38	14.73	13.77	11.87	300	6.88
74	TM8R106K010UBA	10	R	10	0.50	11.75	10.81	10.58	300	6.81
74	TM8T476K010UBA	47	T	10	2.35	14.88	13.92	12.00	300	6.96
16 Volt										
74	TM8M105K016UBA	1	M	10	0.20	13.95	13.05	11.25	300	6.52
74	TM8R106K016UBA	10	R	10	0.80	11.50	10.58	10.35	300	6.67
20 Volt										
74	TM8W105K020UBA	1	M	10	0.20	11.80	10.86	10.62	300	6.84
74	TM8R335K020UBA	3.3	R	10	0.33	11.50	10.58	10.35	300	6.67
25 Volt										
74	TM8R105K025UBA	1	R	10	0.20	11.50	10.58	10.35	300	6.67
74	TM8P475K025UBA	4.7	P	10	0.59	14.26	13.34	11.50	300	6.67
40 Volt										
74	TM8P105K040UBA	1	P	10	0.20	11.50	10.58	10.35	300	6.67

## TR8 SERIES: HI-REL COTS, ULTRA-LOW ESR, LEAD FRAMELESS MOLDED

• Operating temperature: -55°C to 85°C (125°C with voltage derating)



For quantities greater than listed, call for quote.

MOUSER STOCK NO.		Value (µF)	Case Code	Tol. %	ESR (Ω)	Price Each			Reel Qty.	Price Per Piece
Mfr.	Mfr. Part No.					1	10	100		
4 Volt										
74	TR8M476M004C1500	47	M	20	1.5	1.71	1.44	1.05	4000	.75
6.3 Volt										
74	TR8M226M6R3C1500	22	M	20	1.5	1.				