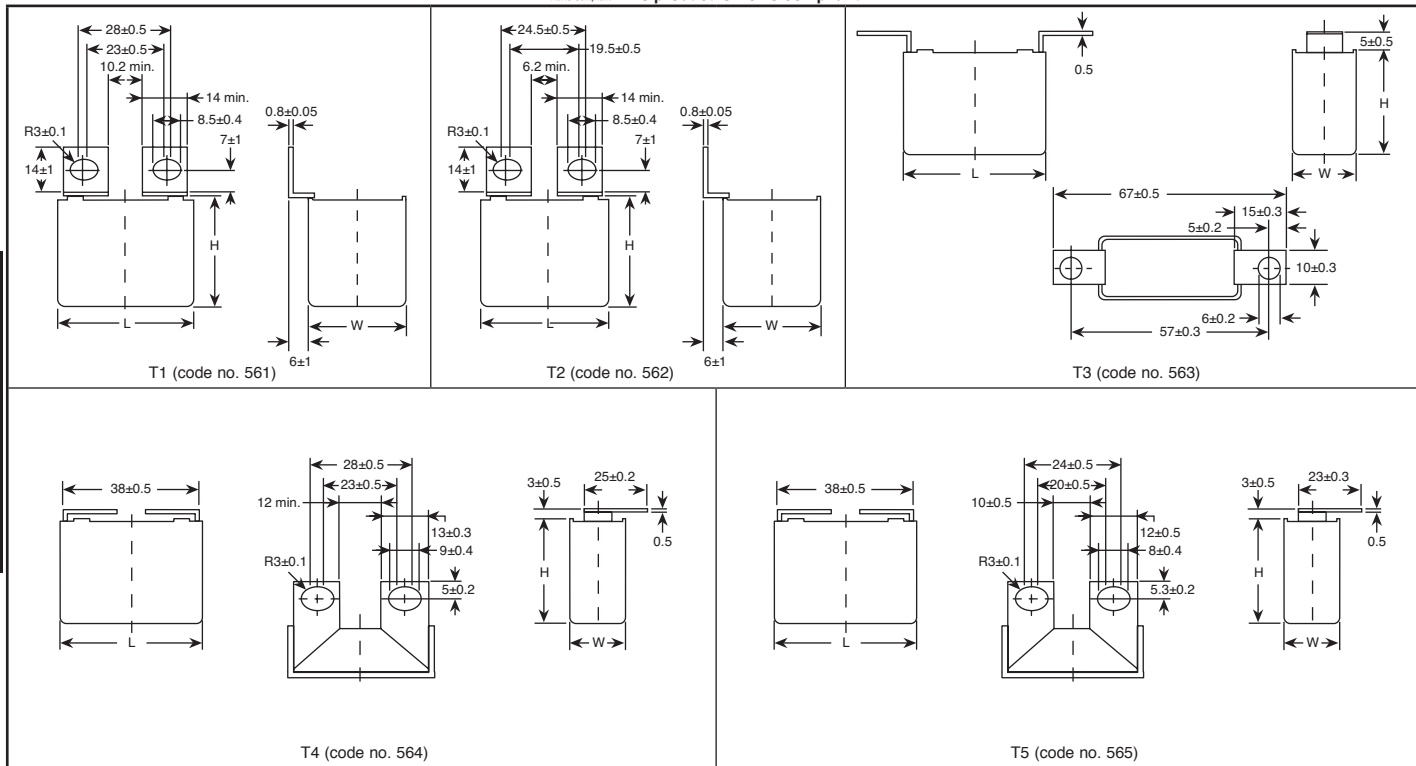


# EPCOS Film Snubber Capacitors

RoHS Compliant This product is RoHS compliant.



Epcos Film Capacitors



DIMENSIONS: mm

## EPCOS MKP SNUBBER CAPACITORS

### Marking:

- Manufacturer's logo
- Ordering code
- Style (MKP)
- Rated Capacitance (coded)
- Cap
- Tolerance (code letter)
- Rated DC voltage
- Date of manufacture (coded)

### Construction:

- Dielectric: Polypropylene (MKP) film
- Wound technology with internal series connection
- Plastic case (UL 94 V-0)
- Epoxy resin sealing (UL 94 V-0)

### Specifications:

- Maximum operating temperature: 100°C
- Strap terminals, tinned copper (maximum torque 10 Nm)
- Max. Operating Temperature: +100°C
- Rated Temperature: +85°C -55°C

### Pulse Handling Capability:

\*dv/dt\* values represents the maximum permissible voltage change per unit of time for non-sinusoidal voltages, expressed in V/μs.

For quantities greater than listed, call for quote.

MOUSER STOCK NO.	Epcos Part No.	Value (μF)	VDC	Terminal	Max. Dimensions mm			dv/dt V/μS	VAC (rms)	ESR @ 100 KHz	Irms @ 100 KHz	Price Each			
					W	H	L					1	25	100	500
871-B32656S0474K563	B32656S0474K563	0.47	1000	T3	14	25	42	450	480	8	9	9.52	8.63	7.08	6.27
871-B32656S0474K564	B32656S0474K564	0.47	1000	T4	14	25	42	450	480	8	9	8.10	5.53	4.59	4.30
871-B32656S0474K565	B32656S0474K565	0.47	1000	T5	14	25	42	450	480	8	9	8.10	5.53	4.59	4.35
871-B32656S0684K563	B32656S0684K563	0.68	1000	T3	16	28.5	42	450	480	6	10	11.11	10.07	8.26	7.32
871-B32656S0684K564	B32656S0684K564	0.68	1000	T4	16	28.5	42	450	480	6	10	11.18	10.09	8.15	7.34
871-B32656S0684K565	B32656S0684K565	0.68	1000	T5	16	28.5	42	450	480	6	10	11.18	10.09	8.15	7.34
871-B32656S1684K561	B32656S1684K561	0.68	1600	T1	30	45	42	600	750	6	17	24.33	21.96	17.73	15.96
871-B32656S0105K561	B32656S0105K561	1.0	1000	T1	20	39.5	42	450	480	6	12	14.36	12.96	10.46	9.41
871-B32656S0105K562	B32656S0105K562	1.0	1000	T2	20	39.5	42	450	480	6	12	14.36	12.96	10.46	9.41
871-B32656S0105K563	B32656S0105K563	1.0	1000	T3	20	39.5	42	450	480	6	12	14.29	12.95	10.62	9.41
871-B32656S0105K564	B32656S0105K564	1.0	1000	T4	20	39.5	42	450	480	6	12	14.36	12.96	10.46	9.41
871-B32656S0105K564	B32656S0105K564	1.0	1000	T4	20	39.5	42	450	480	6	12	17.51	15.81	12.76	11.48
871-B32656S0105K565	B32656S0105K565	1.0	1000	T5	20	39.5	42	450	480	6	12	14.36	12.96	10.46	9.41
871-B32656S0125K561	B32656S0125K561	1.2	1000	T1	20	39.5	42	450	480	5	13	15.94	14.38	11.61	10.45
871-B32656S0125K562	B32656S0125K562	1.2	1000	T2	20	39.5	42	450	480	5	13	15.94	14.38	11.61	10.45
871-B32656S0125K563	B32656S0125K563	1.2	1000	T3	20	39.5	42	450	480	5	13	15.87	14.39	11.80	10.46
871-B32656S0125K564	B32656S0125K564	1.2	1000	T4	20	39.5	42	450	480	5	13	15.94	14.38	11.61	10.45
871-B32656S0125K565	B32656S0125K565	1.2	1000	T5	20	39.5	42	450	480	5	13	15.94	14.38	11.61	10.45
871-B32656S0155K561	B32656S0155K561	1.5	1000	T1	30	45	42	450	480	5	15	17.55	15.84	12.79	11.51
871-B32656S0155K562	B32656S0155K562	1.5	1000	T2	30	45	42	450	480	5	15	17.55	15.84	12.79	11.51
871-B32656S0155K563	B32656S0155K563	1.5	1000	T3	30	45	42	450	480	5	15	17.46	15.82	12.98	11.51
871-B32656S7224K563	B32656S7224K563	0.22	1250	T3	14	25	42	500	500	10	8	14.51	13.16	10.79	9.56
871-B32656S7224K564	B32656S7224K564	0.22	1250	T4	14	25	42	500	500	10	8	11.48	10.36	8.36	7.52
871-B32656S7224K565	B32656S7224K565	0.22	1250	T5	14	25	42	500	500	10	8	14.00	12.63	10.19	9.17
871-B32656S7684K561	B32656S7684K561	0.68	1250	T1	20	39.5	42	500	500	6	10	15.94	14.38	11.61	10.45
871-B32656S7684K562	B32656S7684K562	0.68	1250	T2	20	39.5	42	500	500	6	10	19.44	17.54	14.16	12.74
871-B32656S7684K563	B32656S7684K563	0.68	1250	T3	20	39.5	42	500	500	6	10	19.36	17.55	14.39	12.76
871-B32656S7684K564	B32656S7684K564	0.68	1250	T4	20	39.5	42	500	500	6	10	19.44	17.54	14.16	12.74
871-B32656S7684K565	B32656S7684K565	0.68	1250	T5	20	39.5	42	500	500	6	10	19.44	17.54	14.16	12.74
871-B32656S7105K561	B32656S7105K561	1.0	1250	T1	28	37	42	500	500	6	13	17.55	15.84	12.79	11.51
871-B32656S7105K562	B32656S7105K562	1.0	1250	T2	28	37	42	500	500	6	13	21.41	19.32	15.60	14.04
871-B32656S7105K563	B32656S7105K563	1.0	1250	T3	28	37	42	500	500	6	13	21.30	19.30	15.83	14.04
871-B32686S0474J561	B32686S0474J561	0.47	1000	T1	14	25	42	2000	400	3	10	10.04	9.54	9.06	8.61
871-B32686S0474J562	B32686S0474J562	0.47	1000	T2	14	25	42	2000	400	3	10	10.04	9.54	9.06	8.61
871-B32686S0474J563	B32686S0474J563	0.47	1000	T3	14	25	42	2000	400	3	10	9.56	9.08	8.63	8.20
871-B32686S7224J563	B32686S7224J563	0.22	1250	T3	14	25	42	2800	450	7	8.5	20.99	19.94	18.94	17.99
871-B32686S7224J564	B32686S7224J564	0.22	1250	T4	14	25	42	2800	450	7	8.5	20.03	19.03	18.08	17.17
871-B32686S7224J565	B32686S7224J565	0.22	1250	T5	14	25	42	2800	450	7	8.5	20.03	19.03	18.08	17.17