

CREE High Power LEDs



LED Lighting

Cree

NEW SUPPLIER

NEW SUPPLIER

NEW SUPPLIER

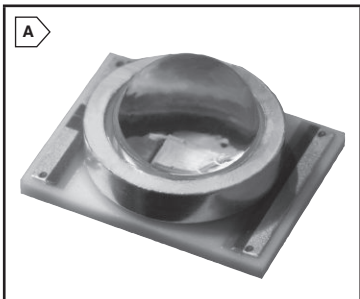
NEW SUPPLIER

XLAMP XR-E SERIES

- Features:
- Viewing Angle (White): 90°
 - Viewing Angle (Color): 100°

MOUSER STOCK NO.	Cree Part No.	Fig.	Color	Color Range	Luminous Flux. (lm) Typical	Forward Voltage (VDC)	Forward Current (mA)	Price Each		
								1	50	100
941-XREBLUL100J02	XREBLU-L1-0000-00J02	A	Blue	465-480nm	23.5	3.7	1000	5.98	5.52	4.83
941-XREBLUL100J01	XREBLU-L1-0000-00J01	A	Blue	465-485nm	23.5	3.7	1000	5.43	5.01	4.38
941-XREBLUL1R250K01	XREBLU-L1-R250-00K01	A	Blue	465-485nm	30.6	3.7	1000	8.73	8.05	7.04
941-XREGRL1R250P01	XREGRL-L1-R250-00P01	A	Green	520-535nm	67.2	3.7	1000	6.49	5.98	5.54
941-XREWHTL1R250E7	XREWHT-L1-R250-00E7	A	Warm White	3000K	73.9	3.5	700	8.20	7.56	6.62
941-XREWHTL1R250E5	XREWHT-L1-R250-00E5	A	Neutral White	4000K	80.6	3.5	700	7.94	7.32	6.40
941-XREWHTL1R250C01	XREWHT-L1-R250-00C01	A	Cool White	5000-10000K	100	3.7	1000	8.42	7.77	6.80
941-XREWHTL100D01	XREWHT-L1-0000-00D01	A	Cool White	5000-10000K	107	3.7	1000	8.29	7.65	6.69
941-XREWHTL100E01	XREWHT-L1-0000-00E01	A	Cool White	5000-10000K	114	3.7	1000	9.02	8.32	7.28

For quantities greater than listed, call for quote.



XLAMP XM-L SERIES

- Features:
- Forward Current (Max.): 175mA
 - Forward Voltage @ 60mA: 2.0
 - Viewing Angle: 120°

MOUSER STOCK NO.	Cree Part No.	Fig.	Color	CCT Range (K)	Luminous Flux. (lm) Typical	Price Each		
						1	50	100
941-XMLAWT0000LS60E8	XMLAWT-00-0000-0000LS60E8	B	Warm White	2700	182	6.86	6.33	5.53
941-XMLAWT0000LT20E8	XMLAWT-00-0000-0000LT20E8	B	Warm White	2700	200	8.29	7.65	6.69
941-XMLAWT0000LT20E7	XMLAWT-00-0000-0000LT20E7	B	Warm White	3000	200	6.86	6.33	5.53
941-XMLAWT0200LT20E7	XMLAWT-02-0000-0000LT20E7	B	Warm White	3000	200	6.86	6.33	5.53
941-XMLAWT0000LT30E7	XMLAWT-00-0000-0000LT30E7	B	Warm White	3000	220	8.29	7.65	6.38
941-XMLAWT0200LT40E4	XMLAWT-02-0000-0000LT40E4	B	Neutral White	4500	240	6.86	6.33	5.53
941-XMLAWT0000LT40E3	XMLAWT-00-0000-0000LT40E3	B	Neutral White	5000	240	6.86	6.33	5.54
941-XMLAWT0000LT50E3	XMLAWT-00-0000-0000LT50E3	B	Neutral White	5000	260	8.29	7.65	6.69
941-XMLAWT0750S0	XMLAWT-00-0000-0000T50S0	B	Cool White	5000-8300	260	7.15	6.59	5.76
941-XMLAWT0750S3	XMLAWT-00-0000-0000T50S3	B	Cool White	5000-8300	260	7.02	6.48	5.66
941-XMLAWT0760S3	XMLAWT-00-0000-0000T60S3	B	Cool White	5000-8300	280	8.45	7.80	6.82

For quantities greater than listed, call for quote.

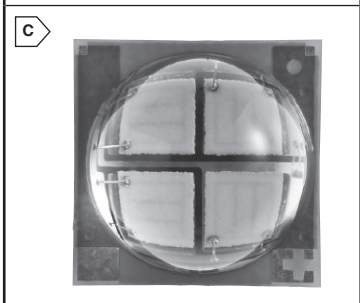


XLAMP XM-L EASYWHITE SERIES

- Features:
- Forward Current (Max.): 700mA
 - Viewing Angle: 115°
 - Forward Voltage @ 700mA: 5.8

MOUSER STOCK NO.	Cree Part No.	Fig.	Color	CCT Range (K)	Luminous Flux. (lm) Typical	Price Each		
						1	50	100
941-XMLEZW02B00T527F	XMLEZW-02-0000-0B00T527F	C	Easy White	2700	260	8.16	7.53	6.28
941-XMLEZW02B00T627F	XMLEZW-02-0000-0B00T627F	C	Easy White	270	280	8.79	8.11	6.76
941-XMLEZW02B00T630F	XMLEZW-02-0000-0B00T630F	C	Easy White	3000	280	8.16	7.53	6.28
941-XMLEZW02B00U230F	XMLEZW-02-0000-0B00U230F	C	Easy White	3000	300	8.79	8.11	6.76

For quantities greater than listed, call for quote.



XLAMP XM-L HIGH VOLTAGE SERIES

- Features:
- Forward Current (Max.): 44mA
 - Forward Voltage (Max.): 46VDC

MOUSER STOCK NO.	Cree Part No.	Fig.	Color	CCT Range (K)	Luminous Flux. (lm) Typical	Price Each		
						1	50	100
941-XMLHVWQ0000LS3E8	XMLHVW-Q0-0000-0000LS3E8	D	Warm White	2700	156	4.18	3.55	3.24
941-XMLHVWQ2000LS3E8	XMLHVW-Q2-0000-0000LS3E8	D	Warm White	2700	156	4.60	3.91	3.57
941-XMLHVWQ0000LS4E8	XMLHVW-Q0-0000-0000LS4E8	D	Warm White	2700	164	4.40	3.74	3.41
941-XMLHVWQ2000LS4E8	XMLHVW-Q2-0000-0000LS4E8	D	Warm White	2700	164	4.84	4.11	3.75
941-XMLHVWQ0000LS3E7	XMLHVW-Q0-0000-0000LS3E7	D	Warm White	3000	156	4.12	3.50	3.19
941-XMLHVWQ2000LS3E7	XMLHVW-Q2-0000-0000LS3E7	D	Warm White	3000	156	4.12	3.50	3.19
941-XMLHVWQ0000LS4E7	XMLHVW-Q0-0000-0000LS4E7	D	Warm White	3000	164	4.18	3.55	3.24
941-XMLHVWQ2000LS4E7	XMLHVW-Q2-0000-0000LS4E7	D	Warm White	3000	164	4.60	3.91	3.57
941-XMLHVWQ0000LS5E7	XMLHVW-Q0-0000-0000LS5E7	D	Warm White	3000	172	4.40	3.74	3.41
941-XMLHVWQ2000LS5E7	XMLHVW-Q2-0000-0000LS5E7	D	Warm White	3000	172	4.84	4.11	3.75
941-XMLHVWQ0000LS6E3	XMLHVW-Q0-0000-0000LS6E3	D	Cool White	5000	182	4.18	3.55	3.24
941-XMLHVWQ2000LS6E3	XMLHVW-Q2-0000-0000LS6E3	D	Cool White	5000	182	4.60	3.91	3.57
941-XMLHVWQ0000LT2E3	XMLHVW-Q0-0000-0000LT2E3	D	Cool White	5000	200	4.40	3.74	3.41
941-XMLHVWQ2000LT2E3	XMLHVW-Q2-0000-0000LT2E3	D	Cool White	5000	200	4.84	4.11	3.75
941-XMLHVWQ0000LT251	XMLHVW-Q0-0000-0000LT251	D	Cool White	8300	200	4.18	3.55	3.24
941-XMLHVWQ2000LT251	XMLHVW-Q2-0000-0000LT251	D	Cool White	8300	200	4.60	3.91	3.57
941-XMLHVWQ0000LT351	XMLHVW-Q0-0000-0000LT351	D	Cool White	8300	220	4.40	3.74	3.41
941-XMLHVWQ2000LT351	XMLHVW-Q2-0000-0000LT351	D	Cool White	8300	220	4.84	4.11	3.75

For quantities greater than listed, call for quote.



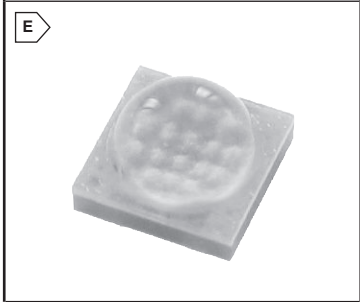
XLAMP XT-E SERIES

XLamp XT-E is Cree's highest performing silicon carbide-based LED technology

- Features:
- Wide viewing angle: 115-140°
 - Maximum drive current: 1.5 A
 - Thermal resistance: 5 °C/W
 - Reflow solderable - JEDEC J-STD-020C Compatible

MOUSER STOCK NO.	Cree Part No.	Fig.	Color	CCT Range (K)	Luminous Flux. (lm) Typical	Price Each		
						1	50	100
941-XTEAWT0000F51	XTEAWT-00-0000-000000F51	D	Cool White	5000	122	2.16	2.00	1.28
941-XTEAWT0000G51	XTEAWT-00-0000-000000G51	D	Cool White	5000	130	2.46	2.27	1.98
941-XTEAWT0000LE7	XTEAWT-00-0000-000000LE7	D	Warm White	3000	93.9	2.14	1.98	1.72
941-XTEAWT0000LCE7	XTEAWT-00-0000-000000LCE7	D	Warm White	3000	100	2.46	2.27	1.98
941-XTEAWT0000LEE3	XTEAWT-00-0000-000000LEE3	D	Cool White	5000	114	2.13	1.97	1.26

For quantities greater than listed, call for quote.



XLAMP XT-E HIGH VOLTAGE SERIES

- Features:
- Forward Current (max.): 22 mA
 - Forward Voltage (max): 46 VDC

MOUSER STOCK NO.	Cree Part No.	Fig.	Color	CCT Range (K)	Radiant Flux. (mW)	Price Each		
						1	50	100
941-XTEHVWQ0000L7E8	XTEHVW-Q0-0000-000000L7E8	E	Warm White	2700	67.2	2.20	1.87	1.71
941-XTEHVWQ2000L7E8	XTEHVW-Q2-0000-000000L7E8	E	Warm White	2700	67.2	2.42	2.06	1.88
941-XTEHVWQ0000L8E8	XTEHVW-Q0-0000-000000L8E8	E	Warm White	2700	73.9	2.32	1.97	1.80
941-XTEHVWQ2000L8E8	XTEHVW-Q2-0000-000000L8E8	E	Warm White	2700	73.9	2.56	2.18	1.98
941-XTEHVWQ0000L8E7	XTEHVW-Q0-0000-000000L8E7	E	Warm White	3000	73.9	2.20	1.87	1.71
941-XTEHVWQ2000L8E7	XTEHVW-Q2-0000-000000L8E7	E	Warm White	3000	73.9	2.42	2.06	1.88
941-XTEHVWQ0000L9E7	XTEHVW-Q0-0000-000000L9E7	E	Warm White	3000	80.6	2.32	1.97	1.80
941-XTEHVWQ2000L9E7	XTEHVW-Q2-0000-000000L9E7	E	Warm White	3000	80.6	2.56	2.18	1.98
941-XTEHVWQ0000LB3	XTEHVW-Q0-0000-000000LB3	E	Cool White	5000	93.9	2.20	1.87	1.71
941-XTEHVWQ2000LB3	XTEHVW-Q2-0000-000000LB3	E	Cool White	5000	93.9	2.42	2.06	1.88
941-XTEHVWQ0000LC3	XTEHVW-Q0-0000-000000LC3	E	Cool White	5000	100	2.32	1.97	1.80
941-XTEHVWQ2000LC3	XTEHVW-Q2-0000-000000LC3	E	Cool White	5000	100	2.56	2.18	1.98
941-XTEHVWQ0000LC51	XTEHVW-Q0-0000-000000LC51	E	Cool White	8300	100	2.20	1.87	1.71
941-XTEHVWQ2000LC51	XTEHVW-Q2-0000-000000LC51	E	Cool White	8300	100	2.42	2.06	1.88
941-XTEHVWQ0000LD51	XTEHVW-Q0-0000-000000LD51	E	Cool White	8300	107	2.32	1.97	1.80
941-XTEHVWQ2000LD51	XTEHVW-Q2-0000-000000LD51	E	Cool White	8300	107	2.56	2.18	1.98

For quantities greater than listed, call for quote.



XLAMP XT-E SERIES ROYAL BLUE LEDS

- Features:
- Available in 2.5nm wavelength bins
 - High lumen density
 - Characterized and binned at 85°C
 - Exceptionally wide viewing angle (140°)
 - Electrically isolated thermal path

MOUSER STOCK NO.	Cree Part No.	Fig.	Color	CCT Range (K)	Radiant Flux. (mW)	Price Each		
						1	50	100
941-XTEARY00000K01	XTEARY-00-0000-000000K01	F	Royal Blue	450-465nm	475	2.57	2.37	2.27

For quantities greater than listed, call for quote.

