

COILTRONICS® Dual Winding Shielded Power Inductors

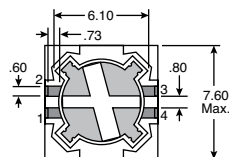


RoHS Compliant This product is RoHS compliant.

Dimensions: mm

Dual Winding, Shielded Power Inductor/Transformer

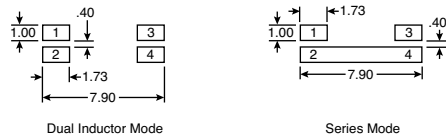
- Features:**
- 125°C maximum total temperature operation
 - Dual winding inductors that can be used as either a single inductor or in a coupled inductor/transformer application
 - Four sizes of shielded drum core inductors
 - Windings can be connected in a series or parallel, offering a broad range of inductance and current ratings
 - 200VAC isolation between windings
 - Ferrite core material



Bottom View



RECOMMENDED PCB LAYOUT

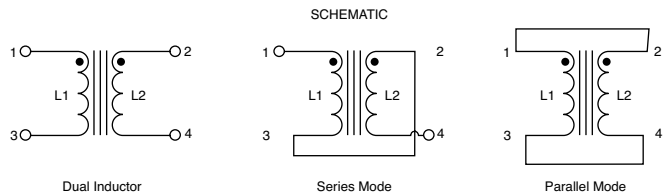


Dual Inductor Mode

Series Mode

- Specifications:**
- Storage Temperature Range: -40°C to +125°C
 - Operating Temperature Range: -40°C to +125°C
 - Solder Reflow Temperature: +260°C max. for 10 seconds max.

- Applications:**
- As a transformer: Sepic, flyback
 - As an inductor: Buck, boost, coupled inductor
 - DC-DC converters
 - VRM inductor for CPU and DDR power supplies
 - Input and output filter chokes



SCHEMATIC

Dual Inductor

Series Mode

Parallel Mode

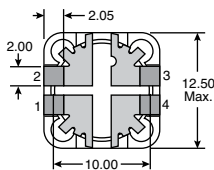
DRQ73 Series

mouser STOCK NO.	Coiltronics Part No.	Rated Inductance (µH)	Parallel Ratings					Series Ratings					Price each			
			OCL (µH) ±20%	Irms (A)	Isat (A)	DCR (Ω @ 20°C) (Typical)	Volt / µSec (Typical)	OCL (µH) ±20%	Irms (A)	Isat (A)	DCR (Ω @ 20°C) (Typical)	Volt / µSec (Typical)	1	50	100	500
704-DRQ73-3R3-R	DRQ73-3R3-R	3.3	3.54	3.31	4.22	0.0259	6.73	14.16	1.66	2.11	0.1035	13.5				
704-DRQ73-4R7-R	DRQ73-4R7-R	4.7	4.42	3.09	3.78	0.0297	7.52	17.69	1.55	1.89	0.1188	15.0				
704-DRQ73-100-R	DRQ73-100-R	10	10.30	2.08	2.47	0.0656	11.5	41.2	1.04	1.24	0.2623	23.0				
704-DRQ73-150-R	DRQ73-150-R	15	15.01	1.83	2.05	0.0844	13.9	60.04	0.916	1.03	0.339	27.8				
704-DRQ73-220-R	DRQ73-220-R	22	22.65	1.62	1.67	0.107	17.0	90.6	0.811	0.83	0.429	34.0				
704-DRQ73-330-R	DRQ73-330-R	33	34.41	1.31	1.35	0.166	21.0	137.6	0.653	0.68	0.665	42.0				

DRQ74 Series

mouser STOCK NO.	Coiltronics Part No.	Rated Inductance (µH)	Parallel Ratings					Series Ratings					Price each			
			OCL (µH) ±20%	Irms (A)	Isat (A)	DCR (Ω @ 20°C) (Typical)	Volt / µSec (Typical)	OCL (µH) ±20%	Irms (A)	Isat (A)	DCR (Ω @ 20°C) (Typical)	Volt / µSec (Typical)	1	50	100	500
704-DRQ74-4R7-R	DRQ74-4R7-R	4.7	5.18	3.34	4.37	0.0254	7.18	20.73	1.67	2.19	0.102	14.4				
704-DRQ74-6R8-R	DRQ74-6R8-R	6.8	7.34	2.60	3.67	0.0418	8.55	29.38	1.30	1.84	0.167	17.1				
704-DRQ74-8R2-R	DRQ74-8R2-R	8.2	8.57	2.53	3.40	0.0441	9.23	34.26	1.27	1.70	0.177	18.5				
704-DRQ74-100-R	DRQ74-100-R	10	9.88	2.41	3.17	0.0489	9.92	39.53	1.20	1.58	0.196	19.8				
704-DRQ74-150-R	DRQ74-150-R	15	16.09	2.11	2.48	0.0637	12.7	64.36	1.05	1.24	0.255	25.4				
704-DRQ74-220-R	DRQ74-220-R	22	21.73	1.75	2.13	0.0925	14.7	86.92	0.874	1.07	0.371	29.4				
704-DRQ74-330-R	DRQ74-330-R	33	33.01	1.41	1.73	0.143	18.1	132.0	0.702	0.87	0.574	36.2				
704-DRQ74-470-R	DRQ74-470-R	47	49.64	1.15	1.41	0.216	22.2	198.6	0.573	0.71	0.865	44.4				

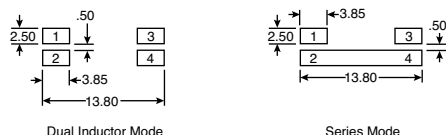
- Features:**
- 125°C maximum total temperature operation
 - Dual winding inductors that can be used as either a single inductor or in a coupled inductor/transformer application
 - Four sizes of shielded drum core inductors
 - Windings can be connected in a series or parallel, offering a broad range of inductance and current ratings
 - 200VAC isolation between windings
 - Ferrite core material



Bottom View



RECOMMENDED PCB LAYOUT

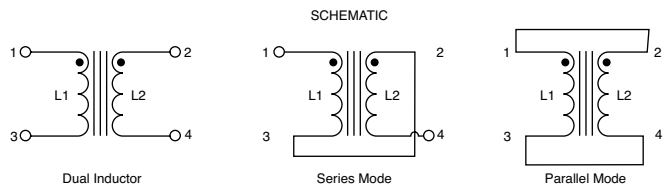


Dual Inductor Mode

Series Mode

- Specifications:**
- Storage Temperature Range: -40°C to +125°C
 - Operating Temperature Range: -40°C to +125°C
 - Solder Reflow Temperature: +260°C max. for 10 seconds max.

- Applications:**
- As a transformer: Sepic, flyback
 - As an inductor: Buck, boost, coupled inductor
 - DC-DC converters
 - VRM inductor for CPU and DDR power supplies
 - Input and output filter chokes



SCHEMATIC

Dual Inductor

Series Mode

Parallel Mode

DRQ125 Series

mouser STOCK NO.	Coiltronics Part No.	Rated Inductance (µH)	Parallel Ratings					Series Ratings					Price each			
			OCL (µH) ±20%	Irms (A)	Isat (A)	DCR (Ω @ 20°C) (Typical)	Volt / µSec (Typical)	OCL (µH) ±20%	Irms (A)	Isat (A)	DCR (Ω @ 20°C) (Typical)	Volt / µSec (Typical)	1	50	100	500
704-DRQ125-100-R	DRQ125-100-R	10	9.65	5.35	7.17	0.0189	14.6	38.62	2.67	3.59	0.0757	29.2				
704-DRQ125-150-R	DRQ125-150-R	15	15.35	4.27	5.69	0.0298	18.4	61.4	2.13	2.85	0.12	36.8				
704-DRQ125-220-R	DRQ125-220-R	22	22.36	3.70	4.71	0.0396	22.2	89.44	1.84	2.36	0.159	44.4				
704-DRQ125-330-R	DRQ125-330-R	33	33.74	3.28	3.84	0.0505	27.2	135.0	1.64	1.92	0.203	54.4				
704-DRQ125-470-R	DRQ125-470-R	47	47.47	2.71	3.24	0.074	32.3	189.9	1.35	1.62	0.297	64.6				
704-DRQ125-101-R	DRQ125-101-R	100	102.7	1.78	2.20	0.17	47.5	410.8	0.892	1.10	0.682	95.0				

DRQ127 Series

mouser STOCK NO.	Coiltronics Part No.	Rated Inductance (µH)	Parallel Ratings					Series Ratings					Price each			
			OCL (µH) ±20%	Irms (A)	Isat (A)	DCR (Ω @ 20°C) (Typical)	Volt / µSec (Typical)	OCL (µH) ±20%	Irms (A)	Isat (A)	DCR (Ω @ 20°C) (Typical)	Volt / µSec (Typical)	1	50	100	500
704-DRQ127-4R7-R	DRQ127-4R7-R	4.7	4.84	8.25	16.5	0.00917	11.9	19.36	4.13	8.24	0.0367	23.8				
704-DRQ127-100-R	DRQ127-100-R	10	10.47	6.04	11.2	0.0172	17.5	41.88	3.02	5.60	0.0686	35.0				
704-DRQ127-150-R	DRQ127-150-R	15	14.09	5.03	9.66	0.0247	20.3	56.36	2.51	4.83	0.099	40.6				
704-DRQ127-220-R	DRQ127-220-R	22	22.93	4.00	7.57	0.0391	25.9	91.72	2.00	3.78	0.157	51.8				
704-DRQ127-470-R	DRQ127-470-R	47	47.05	2.95	5.28	0.0719	37.1	188.2	1.47	2.64	0.288	74.2				
704-DRQ127-680-R	DRQ127-680-R	68	66.48	2.44	4.44	0.105	44.1	265.9	1.22	2.22	0.421	88.2				
704-DRQ127-101-R	DRQ127-101-R	100	99.31	1.96	3.64	0.163	53.9	397.2	0.98	1.82	0.653	107.8				