

VISHAY / SPRAGUE Aluminum Electrolytic Capacitors



SPRAGUE TYPE 39D POWERLYTIC® 85°C, ALUMINUM ELECTROLYTIC CAPACITORS

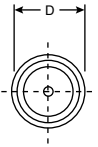
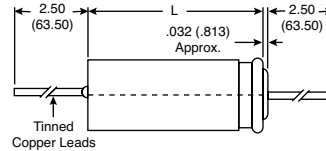
DIMENSIONS: in.

Performance Characteristics:

- Operating temperature: -20°C to +85°C
- Capacitance tolerance: 10WVDC to 75WVDC, +75%, -10%; 100WVDC to 450WVDC, +50%, -10%
- Dissipation factor: 10WVDC and 15WVDC capacitors, 150%; 25WVDC and 30WVDC capacitors, 60%; 40WVDC and 50WVDC capacitors, 45%; 75WVDC and 100WVDC capacitors, 30%; 150WVDC to 450WVDC capacitors, 18%.

Features:

- Designed for applications requiring greatest possible capacitance in small physical case sizes
- Supplement original Type 36D can-type capacitors, offering lower capacitance values in smaller sizes with axial leads
- Welds at all critical anode and cathode terminals eliminate riveted or pressure connections to assure freedom from open circuit even when operated in the microvolt or millivolt signal range
- Pressure-sensitive safety vent
- Service life of 10 years or more in normal circuit applications
- Capacitors have an outer plastic-film insulation



For quantities of 100 and up, call for quote.

MOUSER STOCK NO.	Vishay Part No.	Value (µF)	Case Size D x L (in.)	Price Each		
				1	25	50
10WVDC @ +85°C, Surge = 12V						
75-39D108G010FJ6	39D108G010FJ6	1000	.635 x 1.641			
15WVDC @ +85°C, Surge = 18V						
75-39D808G015JT6	39D808G015JT6	8000	1.01 x 3.641			
25WVDC @ +85°C, Surge = 30V						
75-39D478G025JT6	39D478G025JT6	4700	1.01 x 3.641			
30WVDC @ +85°C, Surge = 40V						
75-39D507G030FL6	39D507G030FL6	500	.635 x 2.141			
75-39D308G030JS6	39D308G030JS6	3000	1.01 x 3.141			
40WVDC @ +85°C, Surge = 50V						
75-39D158G040HP6	39D158G040HP6	1500	.885 x 2.641			
50WVDC @ +85°C, Surge = 65V						
75-39D157G050EL6	39D157G050EL6	150	.510 x 2.141			
75-39D257G050HE6	39D257G050HE6	250	.885 x 1.141			

For quantities of 100 and up, call for quote.

MOUSER STOCK NO.	Vishay Part No.	Value (µF)	Case Size D x L (in.)	Price Each		
				1	25	50
50WVDC @ +85°C, Surge = 65V (cont.)						
75-39D507G050GL6	39D507G050GL6	500	.760 x 2.141			
75-39D118G050HP6	39D118G050HP6	1100	.885 x 2.641			
75-39D238G050JT6	39D238G050JT6	2300	1.01 x 3.641			
75WVDC @ +85°C, Surge = 95V						
75-39D157G075FJ6	39D157G075FJ6	150	.635 x 1.641			
150WVDC @ +85°C, Surge = 175V						
75-39D127F150GL6	39D127F150GL6	120	.760 x 2.141			
250WVDC @ +85°C, Surge = 300V						
75-39D506F250JE6	39D506F250JE6	50	1.01 x 1.141			
350WVDC @ +85°C, Surge = 400V						
75-39D606F350HL6	39D606F350HL6	60	.885 x 1.641			



SPRAGUE TYPE 53D 85°C, TUBULAR GENERAL PURPOSE ALUMINUM CAPACITORS

Performance Characteristics:

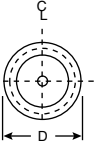
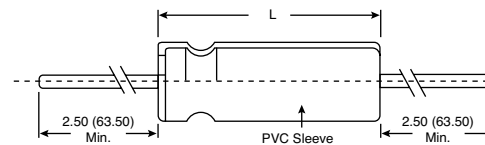
- Operating temperature: -40°C to +85°C
- Capacitance tolerance: -10%, +50%; -10%, +75%

- Life validation test: 1000 hours at +85°C:
 - Δ CAP ≤ 15% from initial measurement
 - Δ ESR ≤ 1.3 x initial specified limit
 - Δ DCL ≤ initial specified limit

For quantities of 100 and up, call for quote.

MOUSER STOCK NO.	Vishay Part No.	Value (µF)	Case Size D x L (in.)	Price Each		
				1	25	50
25WVDC @ +85°C, Surge = 35V						
75-53D25V4300	53D432G025HJ6	4300	.885 x 1.641			
75-53D25V6200	53D622G025HL6	6200	.885 x 2.141			
75-53D25V11000	53D113G025JP6	11000	1.01 x 2.641			
35WVDC @ +85°C, Surge = 45V						
75-53D35V1100	53D112G035GE6	1100	.76 x 1.141			
75-53D35V2100	53D212G035GJ6	2100	.76 x 1.641			
75-53D35V3200	53D322G035HJ6	3200	.885 x 1.641			
75-53D35V4700	53D472G035HL6	4700	.885 x 2.141			
50WVDC @ +85°C, Surge = 70V						
75-53D50V1300	53D132G050GJ6	1300	.76 x 1.641			
75-53D50V1900	53D192G050HJ6	1900	.885 x 1.641			
75-53D50V2800	53D282G050HL6	2800	.885 x 2.141			

DIMENSIONS: in.



For quantities of 100 and up, call for quote.

MOUSER STOCK NO.	Vishay Part No.	Value (µF)	Case Size D x L (in.)	Price Each		
				1	25	50
50WVDC @ +85°C, Surge = 70V (cont.)						
75-53D50V3800	53D382G050JL6	3800	1.01 x 2.141			
75-53D50V5000	53D502G050JP6	5000	1.01 x 2.641			
75-53D50V6800	53D682G050JP6	6800	1.01 x 2.641			
63WVDC @ +85°C, Surge = 80V						
75-53D63V1000	53D102G063GJ6	1000	.76 x 1.641			
75-53D63V1500	53D152G063HJ7	1500	.885 x 1.641			
75-53D63V2200	53D222G063HL6	2200	.885 x 2.141			
200WVDC @ +85°C, Surge = 250V						
75-53D200V350	53D352F200JL6	350	1.01 x 2.141			
250WVDC @ +85°C, Surge = 300V						
75-53D250V56	53D560F250GE6	56	.76 x 1.141			
75-53D250V100	53D101F250GJ6	100	.76 x 1.641			
75-53D250V130	53D131F250HJ6	130	.885 x 1.641			
400WVDC @ +85°C, Surge = 450V						
75-53D400V100	53D101F400JL6	100	1.01 x 2.141			
75-53D400V140	53D141F400JS6	140	1.01 x 3.141			
75-53D400V150	53D151F400JS6	150	1.01 x 3.141			



SPRAGUE TYPE 500D 85°C, MINIATURE GENERAL PURPOSE ALUMINUM CAPACITORS

Performance Characteristics:

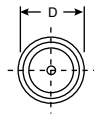
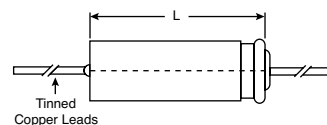
- Operating temperature: -40°C to +85°C (3WVDC to 250WVDC); -20°C to +85°C (251WVDC to 400WVDC)
- Capacitance tolerance: ±20%

- Life validation test: 2000 hours at +85°C:
 - Δ CAP ≤ 20% from initial measurement
 - Δ ESR ≤ 1.5 x initial specified limit
 - Δ DCL ≤ initial specified limit

For quantities of 500 and up, call for quote.

MOUSER STOCK NO.	Vishay Part No.	Value (µF)	Case Size D x L (in.)	Price Each		
				1	50	100
16WVDC @ +85°C, Surge = 20V						
75-500D157M016CB2A	500D157M016CB2A	150	.315 x .689			
75-500D108M016DH2	500D108M016DH2	1000	.374 x 1.496			
75-500D158M016EH2	500D158M016EH2	1500	.433 x 1.496			
25WVDC @ +85°C, Surge = 35V						
75-500D107M025CC2A	500D107M025CC2A	100	.315 x .807			
75-500D227M025DC2A	500D227M025DC2A	220	.374 x .807			
35WVDC @ +85°C, Surge = 40V						
75-500D156M035BA2	500D156M035BA2	15	.248 x .512			
75-500D476M035CB2	500D476M035CB2	47	.315 x .689			

DIMENSIONS: in.



For quantities of 500 and up, call for quote.

MOUSER STOCK NO.	Vishay Part No.	Value (µF)	Case Size D x L (in.)	Price Each		
				1	50	100
50WVDC @ +85°C, Surge = 65V						
75-500D106M050BA2A	500D106M050BA2A	10	.248 x .512			
75-500D107M050DC2A	500D107M050DC2A	100	.374 x .807			
75-500D157M050DD2A	500D157M050DD2A	150	.374 x .945			
75-500D337M050EF2A	500D337M050EF2A	330	.433 x 1.260			
75-500D687M050GH2	500D687M050GH2	680	.630 x 1.496			
63WVDC @ +85°C, Surge = 75V						
75-500D476M063CC2A	500D476M063CC2A	47	.315 x .807			
400WVDC @ +85°C, Surge = 450V						
75-500D106M400FK2	500D106M400FK2	10	.492 x 1.752			