

# VISHAY / SFERNICE Potentiometers

RoHS Compliant This product is RoHS compliant.

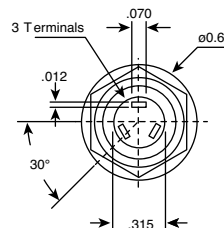
## VISHAY / SFERNICE KNOB POTENTIOMETERS, MODEL P16/PA16

### Specifications:

- Unique "Pot in a Knob"
  - for minimal clearance requirements.
- Excellent ruggedness for tough environments
- Resistance range: P16 = 22Ω-10MΩ w/linear taper, 100Ω-2.2MΩ w/log taper  
PA16 = 1KΩ-1MΩ w/linear taper, 470Ω-500KΩ w/log taper
- Rotational life: P16 (cermet) = 25K cycles  
PA16 (CP) = 50K cycles
- Electrical travel - 270 degrees
- Standard tolerance: ±20%, on request: ±10%

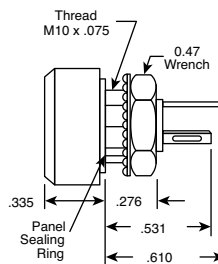
### Features:

- Knob colors available: Black, white and blue  
Other knob dimensions, shapes, colors, or markings are available on request
- 1 Watt at 40°C
- Test according to CECC 41300
- P16 - version for professional and industrial applications
- PA16 - version for professional audio applications
- Compact (integrated)
- High dielectric strength: 2500 V<sub>Rms</sub>
- Fully sealed and panel sealed
- Cermet or conductive plastic



For quantities of 200 and up, call for quote.

MOUSER STOCK NO.	Vishay Part No.	Resistance Values (Ω)	Max. Power @ +40°C (W)	Maximum Current Through Wiper Im (mA)	Price Each			
					1	25	50	100
<b>P16 Series</b>								
72-P16NP101MAB15	P16NP101MAB15	100	1	100				
72-P16NP471MAB15	P16NP471MAB15	470	1	46.1				
72-P16NP102MAB15	P16NP102MAB15	1K	.5	31.6				
72-P16NP222MAB15	P16NP222MAB15	2.2K	.5	21.32				
72-P16NP472MAB15	P16NP472MAB15	4.7K	.5	14.58				
72-P16NP103MAB15	P16NP103MAB15	10K	.5	10				
72-P16NP223MAB15	P16NP223MAB15	22K	.5	6.74				
72-P16NP473MAB15	P16NP473MAB15	47K	.5	4.61				
72-P16NP104MAB15	P16NP104MAB15	100K	.5	3.16				
72-P16NP474MAB15	P16NP474MAB15	470K	.26	0.75				
72-P16NP105MAB15	P16NP105MAB15	1M	.12	0.35				
<b>PA16 Series</b>								
72-PA16NP102MAB15	PA16NP102MAB15	1K	.5	22.4				
72-PA16NP103MAB15	PA16NP103MAB15	10K	.5	7.07				
72-PA16NP223MAB15	PA16NP223MAB15	22K	.5	4.77				
72-PA16NP473MAB15	PA16NP473MAB15	47K	.5	3.26				
72-PA16NP104MAB15	PA16NP104MAB15	100K	.5	2.24				
72-PA16NP474MAB15	PA16NP474MAB15	470K	.26	0.74				



RoHS Compliant  
DIMENSIONS: in

Potentiometers  
Vishay

## VISHAY / SFERNICE FULLY SEALED CONTAINER CERMET POTENTIOMETER, SERIES PE30

### Specifications:

- Resistive element: Cermet
- Electrical travel: 270° ±10°
- Resistance range - Linear: 22Ω - 10MΩ  
Logarithmic: 100Ω - 2.2MΩ
- Tolerance - standard: ±20%
- Power rating - Linear: 3W at 70°C  
Logarithmic: 1.5W at 70°C
- Standard tolerance: 20%

### Features:

- 3W at 70°C
- Low temperature coefficient (100ppm/°C typical)
- Full sealing
- Mechanical strength
- Use of faston 2.86 connections
- Tests according to CECC 41 000
- Military and professional grade

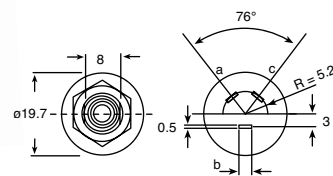
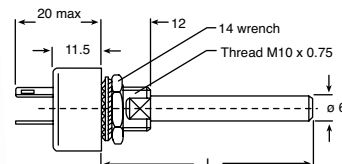


RoHS Compliant

For quantities of 200 and up, call for quote.

MOUSER STOCK NO.	Vishay Part No.	Resistance Values (Ω)	Shaft Length (L) (mm)	Price Each			
				1	25	50	100
72-PE30L0FG102MAB	PE30L0FG102MAB	1K	16				
72-PE30L0FG472MAB	PE30L0FG472MAB	4.7K	16				
72-PE30L0FL102MAB	PE30L0FL102MAB	1K	25				
72-PE30L0FL472MAB	PE30L0FL472MAB	4.7K	25				
72-PE30L0FL103MAB	PE30L0FL103MAB	10K	25				

DIMENSIONS: mm



## VISHAY / SFERNICE 9MM GANG TO MULTI-GANG POTENTIOMETER, P9A SERIES - CONDUCTIVE PLASTIC

### Electrical Specifications:

- Electrical travel: 270° ±10°
- Resistance range - linear: 1KΩ - 1MΩ  
Non-linear: 2KΩ - 500KΩ
- Standard tolerance: ±20%, On Request: ±10%
- Power rating at 70°C - Linear: .1W  
Non-Linear: .05W  
Multiple assem. Linear: .05W/module  
Multiple assem. Non-Linear: .025W/module

### Mechanical Specifications:

- Travel: 300° ±5°
- Rotational life: 25,000 cycles
- Shaft push/pull force: 7DaN max. (15.7 lb f. max)
- Temperature range: -55°C - 100°C

### Applications:

- Professional audio
- Professional video: Speed or lighting controls
- Long life medical instrumentation

### Features:

- Conductive plastic element made for excellent quality
- Professional audio and video applications
- Shaft: Dia: 6mm, Length: 20mm slotted
- Ultra compact (Extra miniature module size)
- Multiple assemblies (up to seven modules)
- Shaft and panel sealed option
- Center mechanical detent fully integrated in option
- Center tap option
- Custom designs available on request

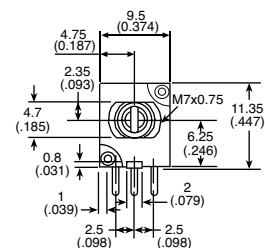
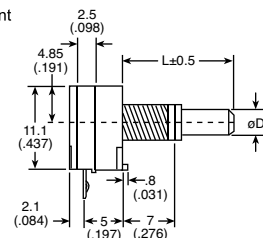
### Available Options:

- Custom shafts or design on request
- Bushing with or w/out locating peg (with as a standard at 6 o'clock position)
- Spacer module(s) to increase the distance between rows of pins (by steps of 2.5mm - 3 spacers max)
- Center tap
- Specific linearity/interlinearity on request



RoHS Compliant

DIMENSIONS: mm (in.)



For quantities of 200 and up, call for quote.

MOUSER STOCK NO.	Vishay Part No.	Resistance Values (Ω)	Price Each			
			1	25	50	100
<b>Single Gang Conductive Plastic Linear</b>						
72-P9A1RFISX1BB2102M	P9A1RFISX1BB2102MA	1K				
72-P9A1RFISX1BB2103M	P9A1RFISX1BB2103MA	10K				
<b>Dual Gang Conductive Plastic Linear</b>						
72-P9A2RFISX1BB2102M	P9A2RFISX1BB2102MA	1K / 1K				
72-P9A2RFISX1BB2103M	P9A2RFISX1BB2103MA	10K / 10K				
72-P9A2RFISX1BB2503M	P9A2RFISX1BB2503MA	50K / 50K				