

SCHURTER Vandal-Proof Switches



This product is RoHS compliant.

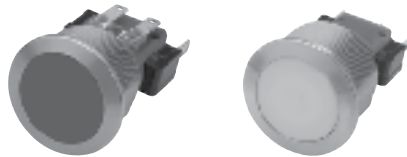
The new MSM CS with ceramic surface is new to switching technology and actuating surface; resistance to scratches, abrasions, impact and chemicals; hypoallergenic to touch. The MSM CS stands up to vandal attacks. It has a very low profile of 1.7mm, which prevents impact to the switch from the side. The switch front withstands a high level of impact with a rating of IK07 and has an IP 69K protection class rating for seal-tight protection against liquids and common chemical agents. The MSM CS microswitch is UL, CSA and ENEC approved and is available in 19 mm and 22 mm mounting diameters. Different switch configurations are offered over a range of 30 VDC to 250 VAC. Current rating ranges from 0.1 to 10 A, depending on switching voltage. The MSM CS is equipped with quick connect terminals to allow for easy assembly. The microswitch is pre-wired in the assembly and then snapped onto the switch housing.

Technical details:

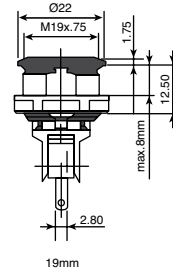
- Stainless steel – ceramic (zirconium dioxide) version
- High scratch resistance
- Fully illuminated
- Protection class IP 69K (Front side)
- Voltage range 30 VDC to 250 VAC
- Current range .1 A to 10 A

Applications:

- Vending machines
- Information Positioning
- Designer switch - Extension of MSM switch actuator options
- Sanitary
- Medical equipment
- Food processing equipment



Dimensions: mm

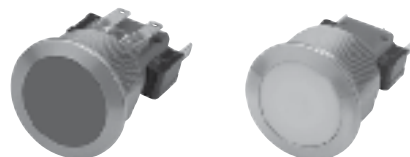


19mm

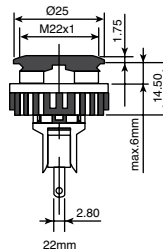
For quantities of 100 and up, call for quote.

MOUSER STOCK NO.	Schurter Part No.	Actuation	Mounting Diameter	Housing Material	Electrical Rating	Price Each			
						1	10	25	50
7021									
693-1241.70211110000	1241.7021.1110000	White Translucent	19 mm	Stainless Steel	.1A/30Vdc				
693-1241.70211120000	1241.7021.1120000	White Translucent	19 mm	Stainless Steel	5A/125VAC or 3A/250VAC				
693-1241.70211130000	1241.7021.1130000	White Translucent	19 mm	Stainless Steel	10A/250VAC				
7022									
693-1241.70221110000	1241.7022.1110000	* No Illumination	19 mm	Stainless Steel	.1A/30Vdc				
693-1241.70221120000	1241.7022.1120000	* No Illumination	19 mm	Stainless Steel	5A/125VAC or 3A/250VAC				
693-1241.70221130000	1241.7022.1130000	* No Illumination	19 mm	Stainless Steel	10A/250VAC				
7026									
693-1241.70261111000	1241.7026.1111000	** Backlighted Red	19 mm	Stainless Steel	.1A/30Vdc				
693-1241.70261112000	1241.7026.1112000	** Backlighted Green	19 mm	Stainless Steel	.1A/30Vdc				
693-1241.70261114000	1241.7026.1114000	** Backlighted Blue	19 mm	Stainless Steel	.1A/30Vdc				
693-1241.70261121000	1241.7026.1121000	** Backlighted Red	19 mm	Stainless Steel	5A/125VAC or 3A/250VAC				
693-1241.70261122000	1241.7026.1122000	** Backlighted Green	19 mm	Stainless Steel	5A/125VAC or 3A/250VAC				
693-1241.70261124000	1241.7026.1124000	** Backlighted Blue	19 mm	Stainless Steel	5A/125VAC or 3A/250VAC				
693-1241.70261131000	1241.7026.1131000	** Backlighted Red	19 mm	Stainless Steel	10A/250VAC				
693-1241.70261132000	1241.7026.1132000	** Backlighted Green	19 mm	Stainless Steel	10A/250VAC				
693-1241.70261134000	1241.7026.1134000	** Backlighted Blue	19 mm	Stainless Steel	10A/250VAC				
693-1241.70261181000	1241.7026.1181000	** Backlighted Red	19 mm	Stainless Steel	5A/250VAC				
693-1241.70261182000	1241.7026.1182000	** Backlighted Green	19 mm	Stainless Steel	5A/250VAC				
693-1241.70261184000	1241.7026.1184000	** Backlighted Blue	19 mm	Stainless Steel	5A/250VAC				

* Specify legend, see data sheet
 ** Legend optional, see data sheet



Dimensions: mm



22mm

For quantities of 100 and up, call for quote.

MOUSER STOCK NO.	Schurter Part No.	Actuation	Mounting Diameter	Housing Material	Electrical Rating	Price Each			
						1	10	25	50
7031									
693-1241.70311110000	1241.7031.1110000	White Translucent	22 mm	Stainless Steel	.1A/30Vdc				
693-1241.70311120000	1241.7031.1120000	White Translucent	22 mm	Stainless Steel	5A/125VAC or 3A/250VAC				
693-1241.70311130000	1241.7031.1130000	White Translucent	22 mm	Stainless Steel	10A/250VAC				
7032									
693-1241.70321110000	1241.7032.1110000	* No Illumination	22 mm	Stainless Steel	.1A/30Vdc				
693-1241.70321120000	1241.7032.1120000	* No Illumination	22 mm	Stainless Steel	5A/125VAC or 3A/250VAC				
693-1241.70321130000	1241.7032.1130000	* No Illumination	22 mm	Stainless Steel	10A/250VAC				
7036									
693-1241.70361111000	1241.7036.1111000	** Backlighted Red	22 mm	Stainless Steel	.1A/30Vdc				
693-1241.70361112000	1241.7036.1112000	** Backlighted Green	22 mm	Stainless Steel	.1A/30Vdc				
693-1241.70361114000	1241.7036.1114000	** Backlighted Blue	22 mm	Stainless Steel	.1A/30Vdc				
693-1241.70361121000	1241.7036.1121000	** Backlighted Red	22 mm	Stainless Steel	5A/125VAC or 3A/250VAC				
693-1241.70361122000	1241.7036.1122000	** Backlighted Green	22 mm	Stainless Steel	5A/125VAC or 3A/250VAC				
693-1241.70361124000	1241.7036.1124000	** Backlighted Blue	22 mm	Stainless Steel	5A/125VAC or 3A/250VAC				
693-1241.70361131000	1241.7036.1131000	** Backlighted Red	22 mm	Stainless Steel	10A/250VAC				
693-1241.70361132000	1241.7036.1132000	** Backlighted Green	22 mm	Stainless Steel	10A/250VAC				
693-1241.70361134000	1241.7036.1134000	** Backlighted Blue	22 mm	Stainless Steel	10A/250VAC				
693-1241.70361181000	1241.7036.1181000	** Backlighted Red	22 mm	Stainless Steel	5A/250VAC				
693-1241.70361182000	1241.7036.1182000	** Backlighted Green	22 mm	Stainless Steel	5A/250VAC				
693-1241.70361184000	1241.7036.1184000	** Backlighted Blue	22 mm	Stainless Steel	5A/250VAC				

* Specify legend, see data sheet
 ** Legend optional, see data sheet

