

CINCH Barrier Terminal Blocks and Accessories



RoHS Compliant This product is RoHS compliant.

BARRIER BLOCKS AND MARKER STRIPS

Series 140 (.375)

Specifications:

- Voltage rating: 250VACrms
- Current rating: 15A max.
- Withstanding voltage without marker strip: 1100VACrms max.
- Withstanding voltage with marker strip: 2000VACrms max.
- Maximum watts per terminal: 3750

Mechanical Specifications:

- Maximum wire size: #16AWG
- Recommended tightening torque: 9lb. -in.

For quantities of 200 and up, call for quote.

MOUSER STOCK NO.	Cinch Part No.	Fig.	No. of Terminals	L Dimension (in.)	Price Each			
					1	25	50	100
Barrier Blocks								
538-2140	2-140	A	2	1.125				
538-3140	3-140	A	3	1.500				
538-4140	4-140	A	4	1.875				
538-5140	5-140	A	5	2.250				
538-6140	6-140	A	6	2.625				
538-7140	7-140	A	7	3.000				
538-8140	8-140	A	8	3.375				
538-9140	9-140	A	9	3.750				
538-10140	10-140	A	10	4.125				
538-12140	12-140	A	12	4.875				
Marker Strips								
538-MS2140	MS-2-140	A	2	1.125				
538-MS3140	MS-3-140	A	3	1.500				
538-MS4140	MS-4-140	A	4	1.875				
538-MS5140	MS-5-140	A	5	2.250				
538-MS6140	MS-6-140	A	6	2.625				
538-MS7140	MS-7-140	A	7	3.000				
538-MS8140	MS-8-140	A	8	3.375				
538-MS9140	MS-9-140	A	9	3.750				
538-MS10140	MS-10-140	A	10	4.125				
538-MS12140	MS-12-140	A	12	4.875				

Series 141 (.438)

Specifications:

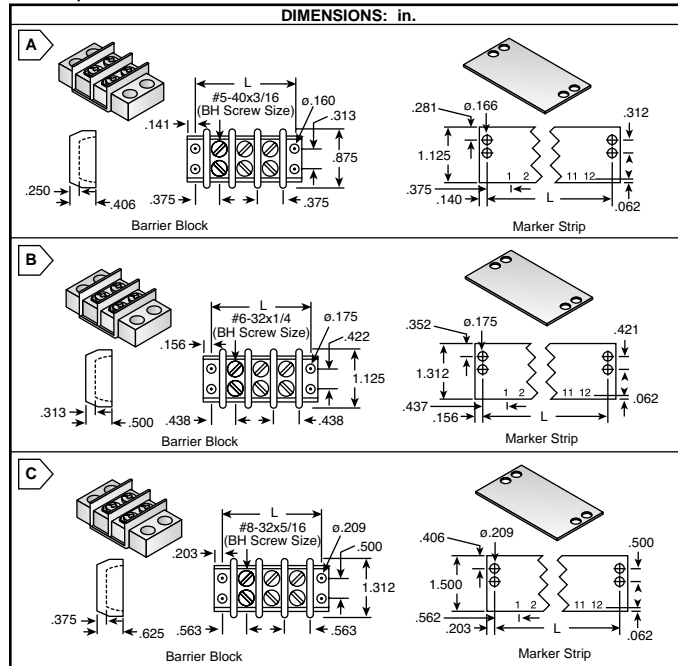
- Voltage rating: 250VACrms
- Current rating: 20A max.
- Withstanding voltage without marker strip: 1100VACrms max.
- Withstanding voltage with marker strip: 2400VACrms max.
- Maximum watts per terminal: 5000

Mechanical Specifications:

- Maximum wire size: #14AWG
- Recommended tightening torque: 12lb. -in.

For quantities of 200 and up, call for quote.

MOUSER STOCK NO.	Cinch Part No.	Fig.	No. of Terminals	L Dimension (in.)	Price Each			
					1	25	50	100
Barrier Blocks								
538-2141	2-141	B	2	1.312				
538-3141	3-141	B	3	1.750				
538-4141	4-141	B	4	2.187				
538-5141	5-141	B	5	2.625				
538-06141	6-141	B	6	3.062				
538-7141	7-141	B	7	3.500				
538-8141	8-141	B	8	3.938				
538-9141	9-141	B	9	4.375				
538-10141	10-141	B	10	4.813				
538-12141	12-141	B	12	5.687				
Marker Strips								
538-MS2141	MS-2-141	B	2	1.312				
538-MS3141	MS-3-141	B	3	1.750				
538-MS4141	MS-4-141	B	4	2.187				
538-MS5141	MS-5-141	B	5	2.625				
538-MS6141	MS-6-141	B	6	3.062				
538-MS7141	MS-7-141	B	7	3.500				
538-MS8141	MS-8-141	B	8	3.938				
538-MS9141	MS-9-141	B	9	4.375				
538-MS10141	MS-10-141	B	10	4.813				
538-MS12141	MS-12-141	B	12	5.687				



Series 142 (.563)

Specifications:

- Voltage rating: 250VACrms
- Current rating: 30A max.
- Withstanding voltage without marker strip: 1600VACrms max.
- Withstanding voltage with marker strip: 2600VACrms max.
- Maximum watts per terminal: 7500

Mechanical Specifications:

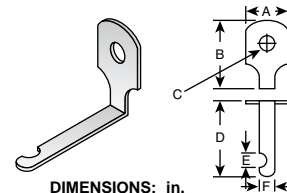
- Maximum wire size: #10AWG
- Recommended tightening torque: 16lb. -in.

For quantities of 200 and up, call for quote.

MOUSER STOCK NO.	Cinch Part No.	Fig.	No. of Terminals	L Dimension (in.)	Price Each			
					1	25	50	100
Barrier Blocks								
538-2142	2-142	C	2	1.687				
538-3142	3-142	C	3	2.250				
538-4142	4-142	C	4	2.812				
538-5142	5-142	C	5	3.375				
538-06142	6-142	C	6	3.937				
538-7142	7-142	C	7	4.500				
538-8142	8-142	C	8	5.062				
538-9142	9-142	C	9	5.625				
538-10142	10-142	C	10	6.187				
538-12142	12-142	C	12	7.312				
Marker Strips								
538-MS2142	MS-2-142	C	2	1.687				
538-MS3142	MS-3-142	C	3	2.250				
538-MS4142	MS-4-142	C	4	2.812				
538-MS5142	MS-5-142	C	5	3.375				
538-MS6142	MS-6-142	C	6	3.937				
538-MS7142	MS-7-142	C	7	4.500				
538-MS8142	MS-8-142	C	8	5.062				
538-MS9142	MS-9-142	C	9	5.625				
538-MS10142	MS-10-142	C	10	6.187				
538-MS12142	MS-12-142	C	12	7.312				

SOLDER TERMINALS, "Y" TERMINALS, PC BOARD

MOUSER STOCK NO.	Cinch Part No.	Dimensions (in.)						Price Each			
		A	B	C	D	E	F	1	25	50	100
538-Y140	Y-140	.281	.500	.136	.593	.093	.091				
538-Y141	Y-141	.312	.625	.152	.781	.125	.103				
538-Y142	Y-142	.421	.734	.177	.906	.125	.126				



JUMPERS

For connecting between adjacent terminals or alternate terminals. All jumpers are brass with nickel plating.

For quantities of 200 and up, call for quote.

MOUSER STOCK NO.	Cinch Part No.	Fig.	Barrier Block Series	Price Each			
				1	25	50	100
538-140J-1	140J1	A	140				
538-141J-1	141J-1	B	141				
538-141J	141J	C	141				
538-95B	95B	C	142				
538-142J-1	142J-1	D	142				
538-142J-2	142J-2	E	142				

