

# MILL-MAX DIP IC Sockets



Plating		
Code	Shell	Inner Contact
13	10µ" Gold	30µ" Gold
43	200µ" Tin (Matte Finish)	30µ" Gold
44	200µ" Tin (Matte Finish)	200µ" Tin (Matte Finish)

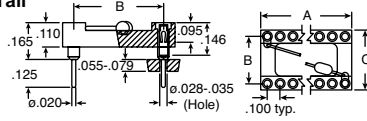
Plating		
Code	Shell	Inner Contact
93	200µ" Tin/Lead	30µ" Gold
99	200µ" Tin/Lead	100µ" Tin/Lead

## IC SOCKETS WITH INTEGRAL DECOUPLING CAPACITOR

### Tin Sleeve, Gold Contact, Solder Tail

- Capacitor: .1µF 20%-50V
- Temperature range: -25°C to +85°C

DIMENSIONS: in.



For quantities of 1,000 and up, call for quote.

MOUSER STOCK NO.	Mill-Max Part No.	No. of Cont.	Dimensions: in.			Price Each			
			A	B	C	1	10	100	500
<b>RoHS Compliant</b>									
575-110433148	110-43-314-41-801000	14	.7	.3	.4				
575-110433168	110-43-316-41-801000	16	.8	.3	.4				
575-110433208	110-43-320-41-801000	20	1.0	.3	.4				
575-110436248	110-43-624-41-801000	24	1.2	.6	.7				
575-110436288	110-43-628-41-801000	28	1.4	.6	.7				
575-9362441	123-43-624-41-801000	24	1.2	.6	.7				
<b>Non-RoHS Compliant</b>									
575-493314	110-93-314-41-801000	14	.7	.3	.4				
575-493316	110-93-316-41-801000	16	.8	.3	.4				
575-493318	110-93-318-41-801000	18	.9	.3	.4				
575-493320	110-93-320-41-801000	20	1.0	.3	.4				
575-493324	110-93-324-41-801000	24	1.2	.3	.4				
575-493624	110-93-624-41-801000	24	1.2	.6	.7				
575-493628	110-93-628-41-801000	28	1.4	.6	.7				
575-493640	110-93-640-41-801000	40	2.0	.6	.7				

### Gold Sleeve, Gold Contact, Solder Tail

For quantities of 1,000 and up, call for quote.

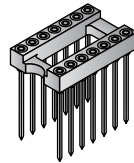
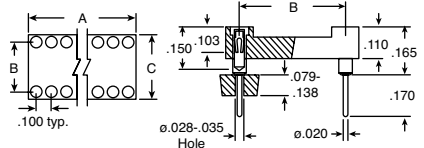
<b>RoHS Compliant</b>									
MOUSER STOCK NO.	Mill-Max Part No.	No. of Cont.	A	B	C	1	10	100	500
575-413314	110-13-314-41-801000	14	.7	.3	.4				
575-413316	110-13-316-41-801000	16	.8	.3	.4				
575-413318	110-13-318-41-801000	18	.9	.3	.4				
575-413320	110-13-320-41-801000	20	1.0	.3	.4				
575-413324	110-13-324-41-801000	24	1.2	.3	.4				
575-413624	110-13-624-41-801000	24	1.2	.6	.7				
575-413628	110-13-628-41-801000	28	1.4	.6	.7				
575-413640	110-13-640-41-801000	40	2.0	.6	.7				

## DUAL-IN-LINE SOCKETS

DIMENSIONS: in.

### Long Solder Tail for Multilayer PC Boards, Open Frame

DIP sockets with increased solder tail length of .170", allowing application on multilayer PCB's up to .139" thickness. Other lengths available upon request.

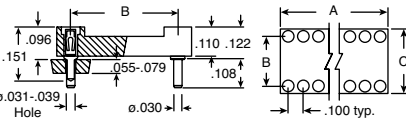
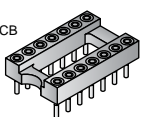


For quantities of 1,000 and up, call for quote.

<b>RoHS Compliant</b>									
MOUSER STOCK NO.	Mill-Max Part No.	No. of Cont.	A	B	C	1	10	100	500
575-11143308	111-43-308-41-001000	8	.4	.3	.4				
575-11143314	111-43-314-41-001000	14	.7	.3	.4				
575-11143316	111-43-316-41-001000	16	.8	.3	.4				
575-11143320	111-43-320-41-001000	20	1.0	.3	.4				
575-11143628	111-43-628-41-001000	28	1.4	.6	.7				
575-11143640	111-43-640-41-001000	40	2.0	.6	.7				
<b>Non-RoHS Compliant</b>									
575-993308	111-93-308-41-001000	8	.4	.3	.4				
575-993314	111-93-314-41-001000	14	.7	.3	.4				
575-993316	111-93-316-41-001000	16	.8	.3	.4				
575-993320	111-93-320-41-001000	20	1.0	.3	.4				
575-993324	111-93-324-41-001000	24	1.2	.3	.4				
575-993624	111-93-624-41-001000	24	1.2	.6	.7				
575-993628	111-93-628-41-001000	28	1.4	.6	.7				
575-993632	111-93-632-41-001000	32	1.6	.6	.7				
575-993640	111-93-640-41-001000	40	2.0	.6	.7				

### Very Low Profile, Open Frame

- Reduced height: only .122" above PCB



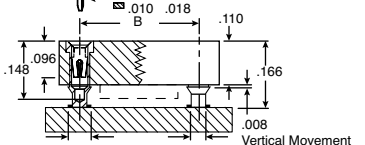
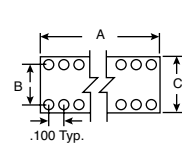
For quantities of 1,000 and up, call for quote.

<b>RoHS Compliant</b>									
MOUSER STOCK NO.	Mill-Max Part No.	No. of Cont.	A	B	C	1	10	100	500
575-11543308	115-43-308-41-001000	8	.4	.3	.4				
575-115433141	115-43-314-41-001000	14	.7	.3	.4				
575-115433161	115-43-316-41-001000	16	.8	.3	.4				
575-115433181	115-43-318-41-001000	18	.9	.3	.4				
575-115436241	115-43-624-41-001000	24	1.2	.6	.7				
575-115436281	115-43-628-41-001000	28	1.4	.6	.7				
575-115436401	115-43-640-41-001000	40	2.0	.6	.7				
<b>Non-RoHS Compliant</b>									
575-893308	115-93-308-41-001000	8	.4	.3	.4				
575-893314	115-93-314-41-001000	14	.7	.3	.4				
575-893316	115-93-316-41-001000	16	.8	.3	.4				
575-893318	115-93-318-41-001000	18	.9	.3	.4				
575-893320	115-93-320-41-001000	20	1.0	.3	.4				
575-893324	115-93-324-41-001000	24	1.2	.3	.4				
575-893328	115-93-328-41-001000	28	1.4	.3	.4				
575-893624	115-93-624-41-001000	24	1.2	.6	.7				
575-893628	115-93-628-41-001000	28	1.4	.6	.7				
575-893632	115-93-632-41-001000	32	1.6	.6	.7				
575-893640	115-93-640-41-001000	40	2.0	.6	.7				

## DUAL-IN-LINE SOCKETS (CONT.)

### Surface Mount, Auto Placement, Stub Tail, Closed Tail

- Closed frame insulator is vision system compatible.

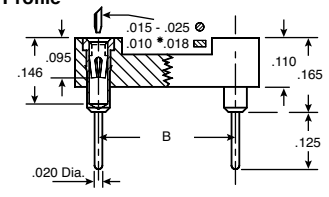
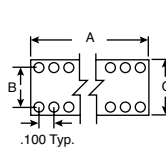


DIMENSIONS: in.

MOUSER STOCK NO.	Mill-Max Part No.	No. of Cont.	Dimensions: in.			Price Each			
			A	B	C	1	10	100	500
<b>RoHS Compliant</b>									
575-4430801	214-44-308-01-670800	8	0.4	0.3	0.4				
575-4431401	214-44-314-01-670800	14	0.7	0.3	0.4				
575-4431601	214-44-316-01-670800	16	0.8	0.3	0.4				
575-4431801	214-44-318-01-670800	18	0.9	0.3	0.4				
575-4432001	214-44-320-01-670800	20	1.0	0.3	0.4				
575-4462401	214-44-624-01-670800	24	1.2	0.6	0.7				
575-4462801	214-44-628-01-670800	28	1.4	0.6	0.7				
575-4463201	214-44-632-01-670800	32	1.6	0.6	0.7				
575-4464001	214-44-640-01-670800	40	2.0	0.6	0.7				
<b>Non-RoHS Compliant</b>									
575-930801	214-99-308-01-670800	8	0.4	0.3	0.4				
575-931401	214-99-314-01-670800	14	0.7	0.3	0.4				
575-2149931	214-99-316-01-670800	16	0.8	0.3	0.4				
575-931801	214-99-318-01-670800	18	0.9	0.3	0.4				
575-932001	214-99-320-01-670800	20	1.0	0.3	0.4				
575-962401	214-99-624-01-670800	24	1.2	0.6	0.7				
575-963201	214-99-632-01-670800	32	1.6	0.6	0.7				

### Closed Frame, Solder Tail, Low Profile

- Low profile closed frame insulator withstands high impacts



DIMENSIONS: in.

For quantities of 1,000 and up, call for quote.

MOUSER STOCK NO.	Mill-Max Part No.	No. of Cont.	Dimensions: in.			Price Each			
			A	B	C	1	10	100	500
<b>RoHS Compliant</b>									
575-21043380	210-43-308-41-001000	8	.4	.3	.4				
575-21043314	210-43-314-41-001000	14	.7	.3	.4				
575-21043316	210-43-316-41-001000	16	.8	.3	.4				
575-21043324	210-43-324-41-001000	24	1.2	.3	.4				
575-21043624	210-43-624-41-001000	24	1.2	.6	.7				
575-21043628	210-43-628-41-001000	28	1.4	.6	.7				
575-21043632	210-43-632-41-001000	32	1.6	.6	.7				
575-21043640	210-43-640-41-001000	40	2.0	.6	.7				
<b>Non-RoHS Compliant</b>									
575-230841	210-93-308-41-001000	8	.4	.3	.4				
575-231441	210-93-314-41-001000	14	.7	.3	.4				
575-231641	210-93-316-41-001000	16	.8	.3	.4				
575-232441	210-93-324-41-001000	24	1.2	.3	.4				
575-262441	210-93-624-41-001000	24	1.2	.6	.7				
575-262841	210-93-628-41-001000	28	1.4	.6	.7				
575-263241									