

# ARIES Sockets, Adapters and Jumpers

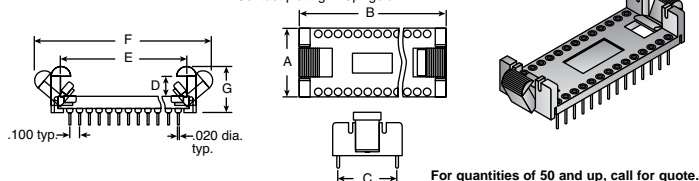


## LOCK/EJECT DIP SOCKETS

EJECT-A-DIP® is a rugged, solderable socket with a unique ejector/latch for fast in-field board maintenance. It locks in the connector or device, making it ideal for high vibration environments. When used as an ejector, it removes DIP packages without pin damage.

### Specifications:

- Pin body plating: tin glass-filled polyester (PBT)
- Contact plating: 10µ" gold
- Contact current rating: 3A
- Body: UL 94V-0



For quantities of 50 and up, call for quote.

MOUSER STOCK NO.	Aries Part No.	# of Pins	Dimensions (In.)							Price Each		
			A	B	C	D	E	F	G	1	10	25
535-14-C280-10	14-C280-10	14	.40	.95	.30	.280	.77	1.30	.54			
535-16-C280-10	16-C280-10	16	.40	1.05	.30	.280	.83	1.54	.54			
535-28-C182-10	28-C182-10	28	.70	1.69	.60	.182	1.47	2.00	.46			
535-32-C182-10	32-C182-10	32	.70	1.89	.60	.182	1.69	2.20	.46			
535-40-C182-10	40-C182-10	40	.70	2.29	.60	.182	2.07	2.60	.46			

## OPEN FRAME MACHINE PIN COLLET SOCKETS

### Specifications:

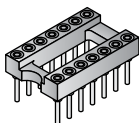
- Body: blue UL 94V-0 glass-filled polyester thermoplastic (PBT)
- Pins: 200µ" tin over 100µ" nickel plated brass
- Contacts: 10µ" gold over 50µ" nickel plated beryllium copper

### Features:

- Open frame allows for more efficient utilization of board space and better cooling
- Compatible with automatic insertion equipment

For quantities of 200 and up, call for quote.

MOUSER STOCK NO.	Aries Part No.	No. of Pins	Pin Centers	Price Each		
				1	25	100
535-08-3518-10	08-3518-10	8	.300			
535-14-3518-10	14-3518-10	14	.300			
535-16-3518-10	16-3518-10	16	.300			
535-18-3518-10	18-3518-10	18	.300			
535-20-3518-10	20-3518-10	20	.300			
535-24-3518-10	24-3518-10	24	.300			
535-24-6518-10	24-6518-10	24	.600			
535-28-3518-10	28-3518-10	28	.300			
535-28-6518-10	28-6518-10	28	.600			
535-32-6518-10	32-6518-10	32	.600			
535-40-6518-10	40-6518-10	40	.600			
535-48-6518-10	48-6518-10	48	.600			

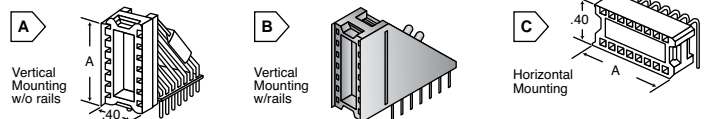


## DISPLAY SOCKETS

### Specifications:

- Body: red UL 94-HB glass-filled nylon
- Contacts: either 10µ" gold or 100µ" tin over 50µ" nickel plated phosphor bronze

### DIMENSIONS (IN.)



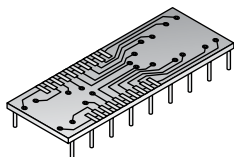
For quantities of 50 and up, call for quote.

MOUSER STOCK NO.	Aries Part No.	Fig.	A Dim. (In.)	No. of Pins	Plating	Row to Row Sp.		Price Each		
						Socket	Pin	1	10	25
535-14-810-90T	14-810-90T	A	.75	14	Tin	.300	.100			
535-10-2810-90	10-2810-90	A	.55	10	Gold	.200	.100			
535-14-810-90R	14-810-90R	B	.75	14	Tin	.300	.100			
535-14-820-90T	14-820-90T	C	.75	14	Tin	.300	.100			
535-14-823-90	14-823-90	C	.75	14	Gold	.300	.300			
535-16-820-90T	16-820-90T	C	.85	16	Tin	.300	.100			
535-40-6823-90	40-6823-90	C	2.05	40	Gold	.600	.300			

## SSOP IC TO DIP ADAPTERS

### Specifications:

- Tin plated
- Solder tail pin
- Current rating: 1A
- Operating temperature: 105°C



For quantities of 50 and up, call for quote.

MOUSER STOCK NO.	Aries Part No.	No. of Contacts	Price Each		
			1	10	25
535-14-351000-10	14-351000-10	14			
535-16-351000-10	16-351000-10	16			
535-18-351000-10	18-351000-10	18			
535-20-351000-10	20-351000-10	20			
535-24-351000-10	24-351000-10	24			
535-28-351000-10	28-351000-10	28			

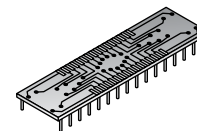
## SOIC AND SOJ TO DIP ADAPTERS

### Specifications:

- Board material: .062" FR-4
- Pins: brass alloy with tin over nickel plating

### Features:

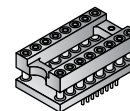
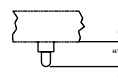
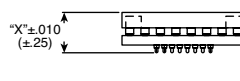
- Cost effective, permits upgrading to SOJ or SOIC---without changing PCB layout
- Available on .300", .400", and .600" centers



For quantities of 50 and up, call for quote.

MOUSER STOCK NO.	Aries Part No.	No. of Pins	Pin Centers	Price Each		
				1	10	25
<b>.300" Centers</b>						
535-08-350000-10	08-350000-10	8	SOIC			
535-14-350000-10	14-350000-10	14	SOIC			
535-16-350000-10	16-350000-10	16	SOIC			
535-18-350000-10	18-350000-10	18	SOIC			
535-20-350000-10	20-350000-10	20	SOIC			
535-20-350001-10	20-350001-10	20	SOJ			
535-24-350000-10	24-350000-10	24	SOIC			
535-28-350002-10	28-350002-10	28	SOIC			
<b>.400" Centers</b>						
535-32-450001-10	32-450001-10	32	SOJ			
<b>.600" Centers</b>						
535-24-650000-10	24-650000-10	24	SOIC			
535-28-650000-10	28-650000-10	28	SOIC			
535-32-650000-10	32-650000-10	32	SOJ			

## DIP TO SOIC ADAPTERS



### Specifications:

- Socket body: Black, UL94V-0 Glass-filled 4/6 Nylon
- PCB: FR-4, .062" thick
- Contact current rating: 3A
- Operating temperature: 105°C

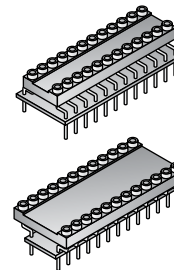
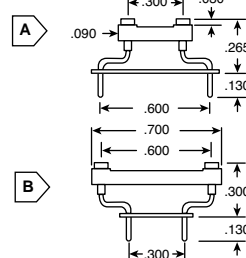
Part No. Suffix	Dim. "X"	Dim. "Y"
-10	.265 (6.73)	.050 (1.27)
-20	.325 (8.26)	.110 (2.79)

For quantities of 50 and up, call for quote.

MOUSER STOCK NO.	Aries Part No.	No. of Contacts	Price Each		
			1	10	25
<b>Short Adapter Pin</b>					
535-08-354000-10	08-354000-10	8			
535-14-3540-10	14-354000-10	14			
535-16-354000-10	16-354000-10	16			
535-20-354000-10	20-354000-10	20			
535-24-354000-10	24-354000-10	24			
535-28-354000-10	28-354000-10	28			
<b>Long Adapter Pin</b>					
535-08-354000-20	08-354000-20	8			
535-14-354000-20	14-354000-20	14			
535-16-354000-20	16-354000-20	16			
535-20-354000-20	20-354000-20	20			
535-24-354000-20	24-354000-20	24			
535-28-354000-20	28-354000-20	28			

## DIP ADAPTER SOCKETS

These adapter sockets allow the use of .300" center devices when the PCB is drilled on .600" centers and vice-versa, giving the flexibility of using .600" or .300" center devices in the same application.



### Specifications:

- Pin body plating: tin
- 4-fingered collet contact: beryllium copper
- Contact plating: 30µ" gold
- Contact current rating: 3A
- Socket body: black UL 94-HB glass-filled nylon

For quantities of 50 and up, call for quote.

MOUSER STOCK NO.	Aries Part No.	Fig	No. of Pins	Description	Price Each		
					1	10	25
535-1106396-24	1106396-24	A	24	.300" DIP to .600" PCB adapters			
535-1106396-28	1106396-28	A	28	.300" DIP to .600" PCB adapters			
535-1107254-24	1107254-24	B	24	.600" DIP to .300" PCB adapters			
535-1107254-28	1107254-28	B	28	.600" DIP to .300" PCB adapters			

## MINI-LINK™ MINIATURE JUMPER

### Specifications:

- Body: black UL 94V-0 glass-filled polyester thermoplastic
- Contacts: tin over nickel plated phosphor bronze



### Features:

- Mini-Link™ miniature jumpers are useful for jumpering .025" square pins on .100" centers
- Jumper terminal is partially exposed for testing

For quantities of 200 and up, call for quote.

MOUSER STOCK NO.	Aries Part No.	Price Each		
		1	25	100
535-ME-100	ME-100			