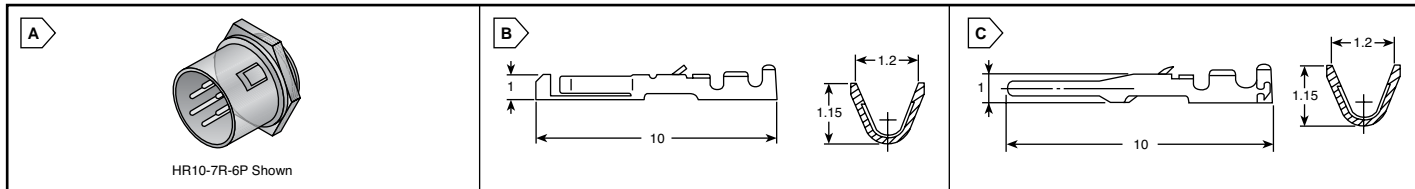


HIROSE Circular Connectors

RoHS Compliant This page of product is compliant.

HR
HIROSE ELECTRIC CO., LTD.



HR10 SERIES, PUSH-PULL METAL CONNECTORS (CONT.)

Receptacles

For quantities of 100 and up, call for quote.

MOUSER STOCK NO.	Hirose Part No.	Fig.	No. of Contacts	Shell Size	Price Each		
					1	10	50
Economy Crimp Type - Male							
798-HR10A-7R-4PC73	HR10A-7R-4PC(73)	A	4	7			
798-HR10A-7R-6PC73	HR10A-7R-6PC(73)	A	6	7			
798-HR10A-10R-10PC71	HR10A-10R-10PC(71)	A	10	10			
798-HR10A-10R-12PC71	HR10A-10R-12PC(71)	A	12	10			
Economy Crimp Type - Female							
798-HR10A-7R-4SC73	HR10A-7R-4SC(73)	A	4	7			
798-HR10A-7R-6SC73	HR10A-7R-6SC(73)	A	6	7			
798-HR10A-10R-10SC71	HR10A-10R-10SC(71)	A	10	10			
798-HR10A-10R-12SC71	HR10A-10R-12SC(71)	A	12	10			
798-HR10A13R20SC73	HR10A-13R-20SC(73)	A	20	13			
Dip Type - Male - Silver							
798-HR10-7R-4P73	HR10-7R-4P(73)	A	4	7			
Economy Dip Type - Male - Silver							
798-HR10A-7R-4PB73	HR10A-7R-4PB(73)	A	4	7			
798-HR10A-7R-6PB73	HR10A-7R-6PB(73)	A	6	7			
798-HR10A-10R-10PB71	HR10A-10R-10PB(71)	A	10	10			
798-HR10A-10R-12PB71	HR10A-10R-12PB(71)	A	12	10			
798-HR10A13R20PB73	HR10A-13R-20PB(73)	A	20	13			
Dip Type - Female - Silver							
798-HR10-7R-4S73	HR10-7R-4S(73)	A	4	7			
Economy Dip Type - Female - Silver							
798-HR10A-7R-4SB73	HR10A-7R-4SB(73)	A	4	7			
798-HR10A-7R-6SB73	HR10A-7R-6SB(73)	A	6	7			
798-HR10A-10R-10SB71	HR10A-10R-10SB(71)	A	10	10			
798-HR10A-10R-12SB71	HR10A-10R-12SB(71)	A	12	10			
Dip Type - Male - Gold							
798-HR10-7R-6PA73	HR10-7R-6PA(73)	A	6	7			
798-HR10-10R-12PA73	HR10-10R-12PA(73)	A	12	10			
Economy Dip Type - Male - Gold							
798-HR10A7R6PB74	HR10A-7R-6PB(74)	A	6	7			
798-HR10A10R12PB72	HR10A-10R-12PB(72)	A	12	10			
Dip Type - Female - Gold							
798-HR10-7R-4SA73	HR10-7R-4SA(73)	A	4	7			
798-HR10-7R-6SA73	HR10-7R-6SA(73)	A	6	7			
798-HR10-10R-12SA73	HR10-10R-12SA(73)	A	12	10			
Economy Dip Type - Female - Gold							
798-HR10A7R6SB74	HR10A-7R-6SB(74)	A	6	7			
798-HR10A10R10SB72	HR10A-10R-10SB(72)	A	10	10			
Economy Solder Type - Male - Silver							
798-HR10A-7R-4P73	HR10A-7R-4P(73)	A	4	7			
798-HR10A7R5P73	HR10A-7R-5P(73)	A	5	7			
798-HR10A-7R-6P73	HR10A-7R-6P(73)	A	6	7			
798-HR10A-10R-10P73	HR10A-10R-10P(73)	A	10	10			
798-HR10A-10R-12P73	HR10A-10R-12P(73)	A	12	10			
798-HR10A13R20P73	HR10A-13R-20P(73)	A	20	13			
Economy Solder Type - Female - Silver							
798-HR10A-7R-4S73	HR10A-7R-4S(73)	A	4	7			
798-HR10A-7R-6S73	HR10A-7R-6S(73)	A	6	7			
798-HR10A-10R-10S71	HR10A-10R-10S(71)	A	10	10			
798-HR10A-10R-12S71	HR10A-10R-12S(71)	A	12	10			
798-HR10A13R20S73	HR10A-13R-20S(73)	A	20	13			
Economy Solder Type - Male - Gold							
798-HR10A7R4P74	HR10A-7R-4P(74)	A	4	7			
798-HR10A7R6P74	HR10A-7R-6P(74)	A	6	7			
Economy Solder Type - Female - Gold							
798-HR10A7R6S74	HR10A-7R-6S(74)	A	6	7			
798-HR10A10R10S72	HR10A-10R-10S(72)	A	10	10			
798-HR10A10R12S72	HR10A-10R-12S(72)	A	12	10			
798-HR10A13R20S74	HR10A-13R-20S(74)	A	20	13			
Economy Threaded Coupling - Dip Type - Female - Silver							
798-HR10A13TR20SB73	HR10A-13TR-20SB(73)	A	20	13			
Economy Threaded Coupling - Solder Type - Female - Silver							
798-HR10A10TR12S73	HR10A-10TR-12S(73)	A	12	10			
Economy Threaded Coupling - Solder Type - Female - Silver							
798-HR10A10WTR12S73	HR10A-10WTR-12S(73)	A	12	10			

Crimp Contacts

For quantities of 100 and up, call for quote. **Crimp Contacts (Reels)**

MOUSER STOCK NO.	Hirose Part No.	Fig.	Plating	AWG	Price Each			MOUSER STOCK NO.	Hirose Part No.	Plating	AWG	Reel Quantity	Price Per Piece
					1	10	50						
Female													
798-HR12-SC-111	HR12-SC-111	B	Gold	26-30				798-HR12-SC-211	HR12-SC-211	Gold	26-30	10000	
798-HR12-SC-112	HR12-SC-112	B	Silver	26-30				798-HR12-SC-212	HR12-SC-212	Silver	26-30	10000	
Male													
798-HR10-PC-111	HR10-PC-111	C	Gold	26-30				798-HR10-PC-211	HR10-PC-211	Gold	26-30	10000	
798-HR10-PC-112	HR10-PC-112	C	Silver	26-30				798-HR10-PC-212	HR10-PC-212	Silver	26-30	10000	

Accessories & Tools

For quantities of 100 and up, call for quote.

MOUSER STOCK NO.	Hirose Part No.	Description	Price Each		
			1	10	50
798-HR10-7R-C	HR10-7R-C	Cap for Shell Size 7			
798-HR10-10R-C	HR10-10R-C	Cap for Shell Size 10			
798-HR12-SC-TC	HR12-SC-TC	Manual Crimping Tool	---	---	---
798-HR12-SC-TP	HR12-SC-TP	Extractor Tool	---	---	---
798-HR10A-TC-02	HR10A-TC-02	Cable Crimping Tool	---	---	---